

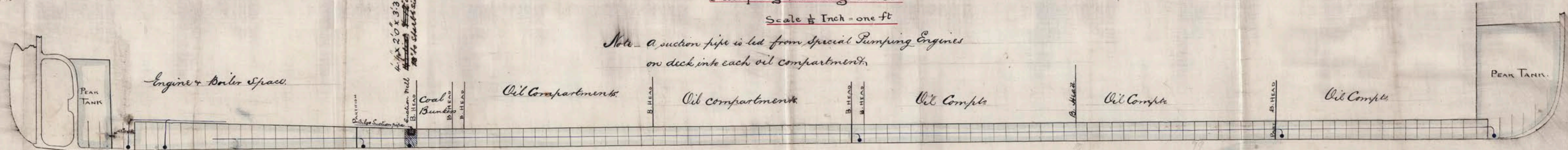
See Mr. H. H. H. 30/11/86

S.S. "Baku" W. H. H. Report No. 6115

Nº 314 S.S. Pumping Arrangement

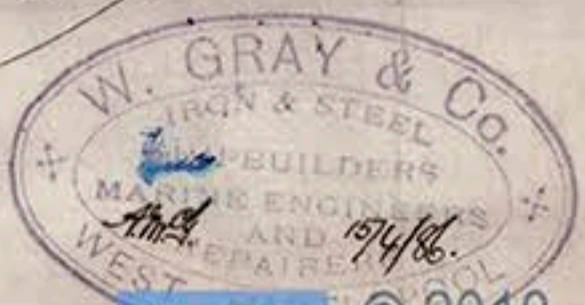
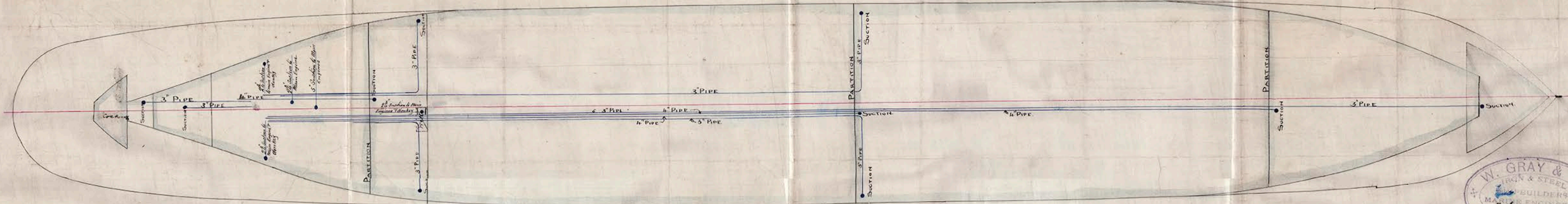
Scale $\frac{1}{8}$ Inch = one ft

Note - a suction pipe is led from special Pumping Engines on deck into each oil compartment.



Engines by the Central Marine Eng. Co. W. H. H. pool.

NOTE: ALL SUCTION PIPES TO GO THROUGH LARGE MAN HOLES IN FLOORS.



Handwritten signature and date: 17/4/86