

BOILER CONTRACT N^o 387

CONSTRUCTED TO PASS BUREAU VERITAS, HAMBURG LAW, LLOYDS, AND BOARD OF TRADE REQUIREMENTS

SCALE 1" = 1 FT
25.4 x 304.797

2 off thus

Messrs Sir W. G. Armstrong Mitchell & Co S.S. N^o 597

Boiler Manufactured by Messrs J. Swan & Sons Newburn

HEATING SURFACE
TUBES = 1940
FURNACES = 168
COMBUSTION CHAMBERS = 132
TUBE PLATES = 110
TOTAL 1 BOILER = 2350

STEAM SPACE 1 BOILER

WORKING PRESSURE 160 lbs. per sq. inch.
TEST - do - 320 do. do.
22.4 atmos

436.82549 METERS

MATERIAL
PLATES STEEL
RIVETS do
STAYS do
TUBES IRON

THE WALLSEND
SLIPWAY & ENGINEERING CO. LTD
NEWCASTLE-UPON-TYNE
N^o 1860 DATE March 192

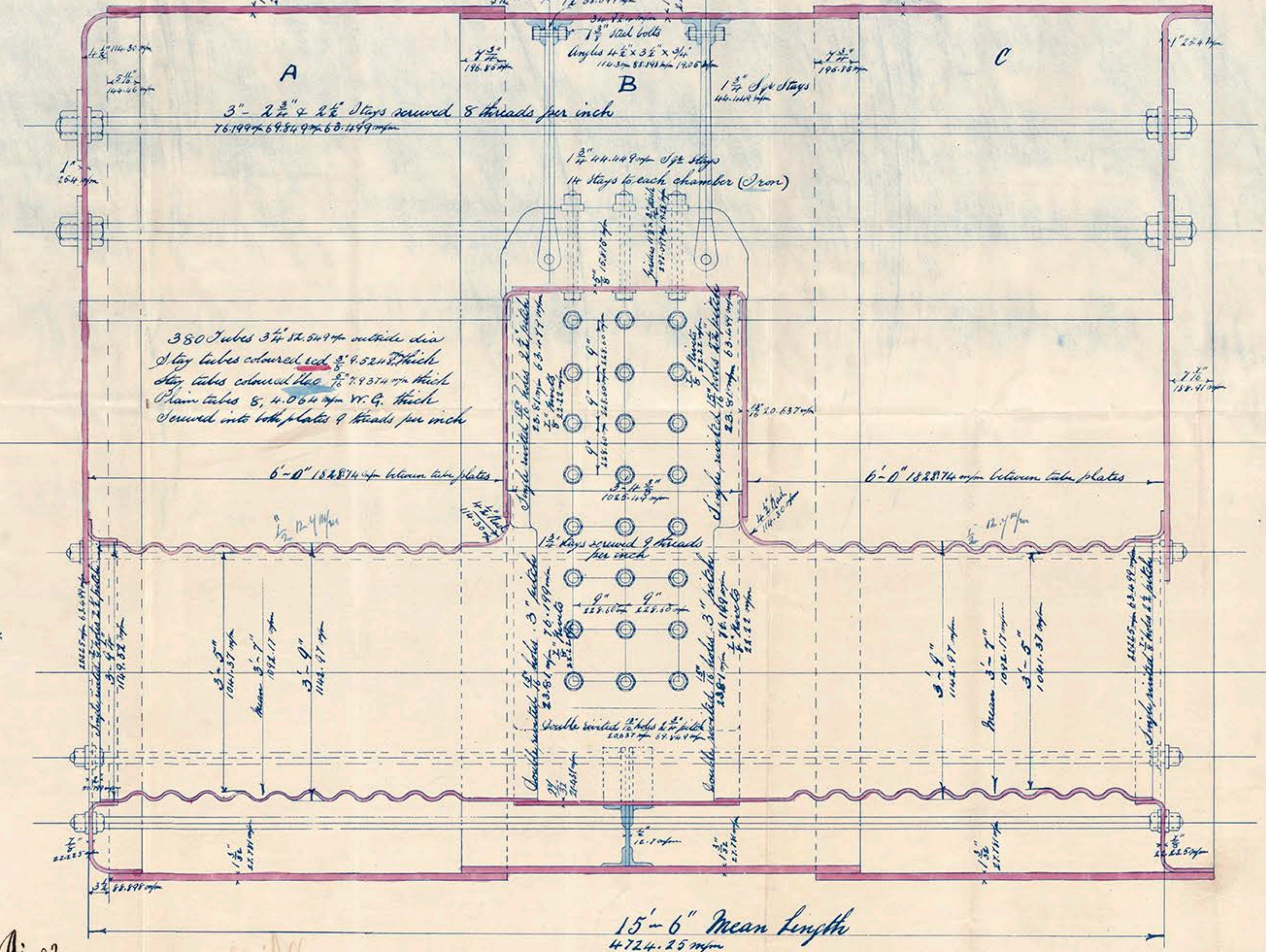
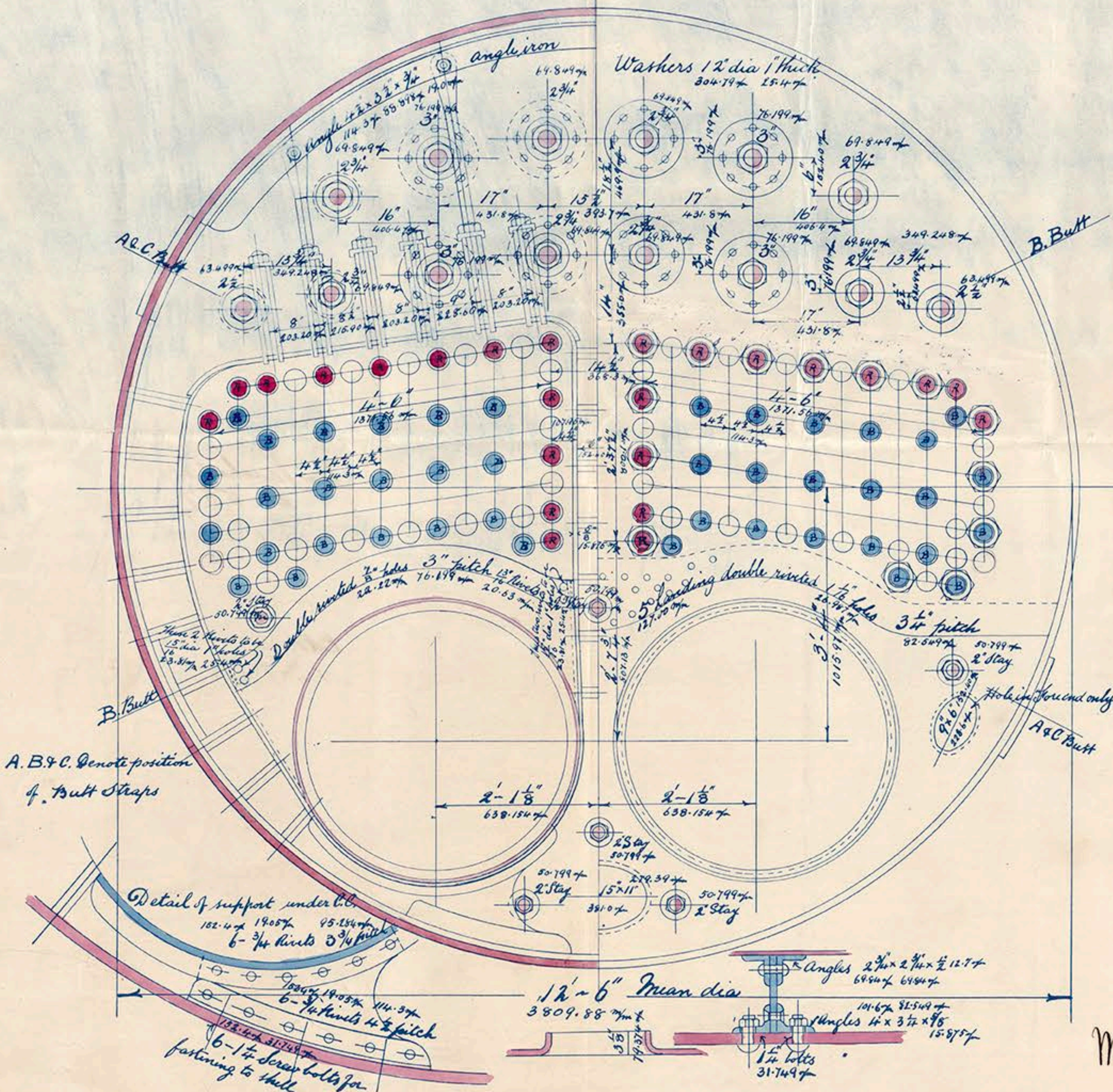
Plan of Shell Riveting

Plate = 86.03%

Rivet = 87.33%

Shell hydraulic riveted throughout
all holes drilled in place after bending.
Shell plates 13/16" 27.78 mm thick
Bolt stays 1" 25.4 mm thick
Rivet holes 1 1/8" 30.16 mm dia. 5/8" 15.87 mm pitch
Centre line seams fully riveted
End do. do. double do.
Rivet holes 1 1/8" 30.16 mm dia. 5/8" 15.87 mm pitch

Manhole 16" x 12" 406.4 x 304.8 mm
Drilling 8" 13/16" 203.2 mm x 27.78 mm



N.A.
3392

Ann. Mitchell & Co.
No. 597
Cor. 387
A.P. 160 M.



Bdhu Standard.
Stock Report 28302



© 2018

Lloyd's Register
Foundation