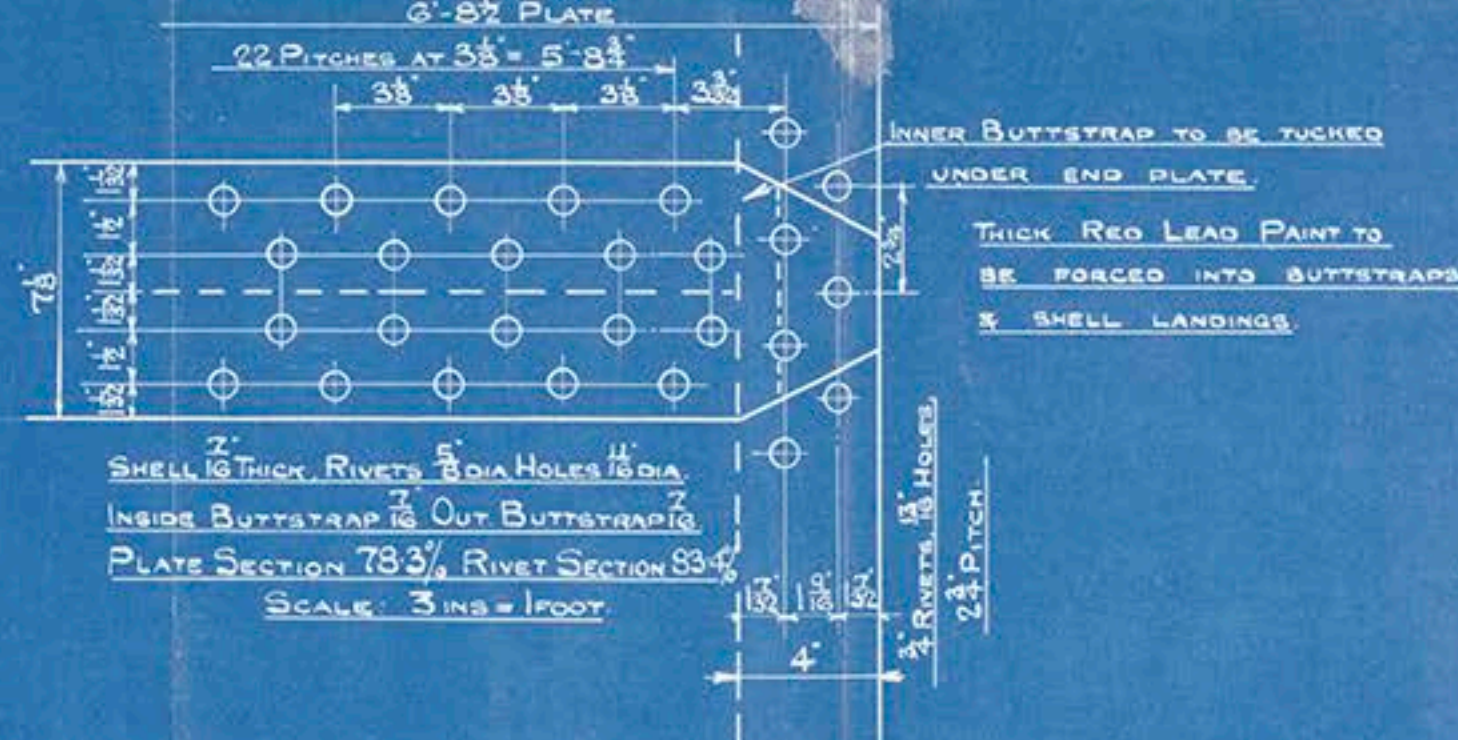


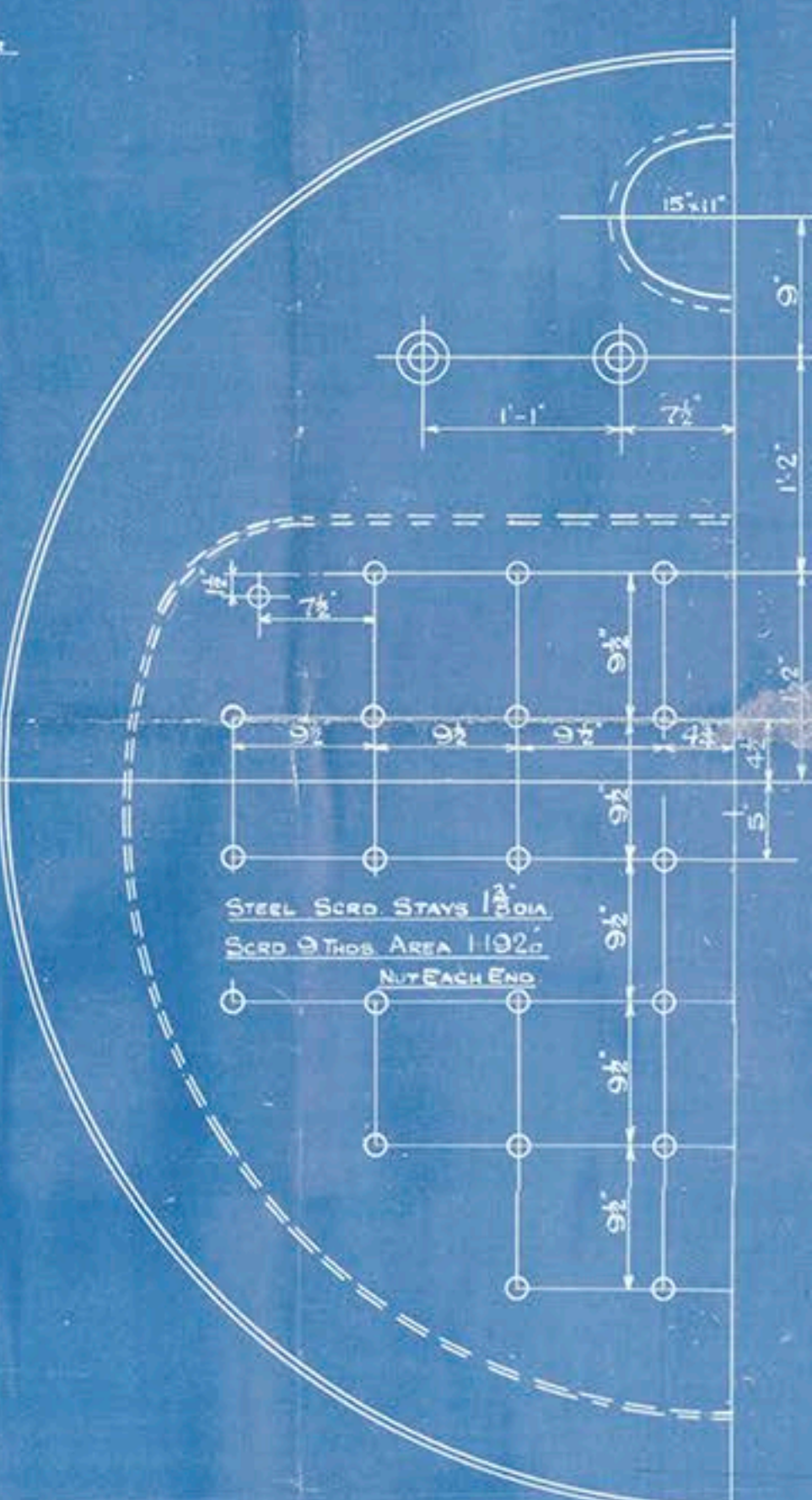
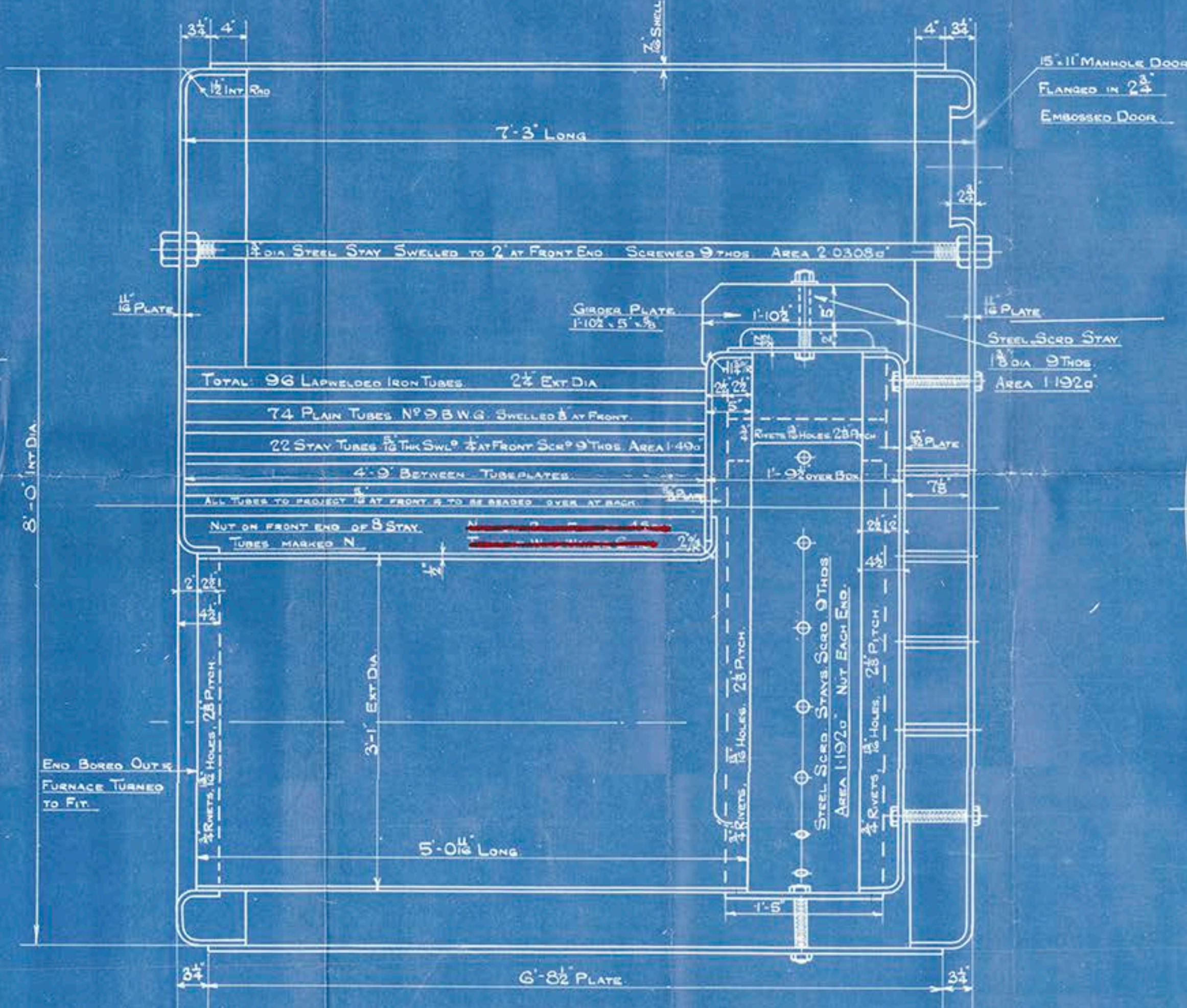
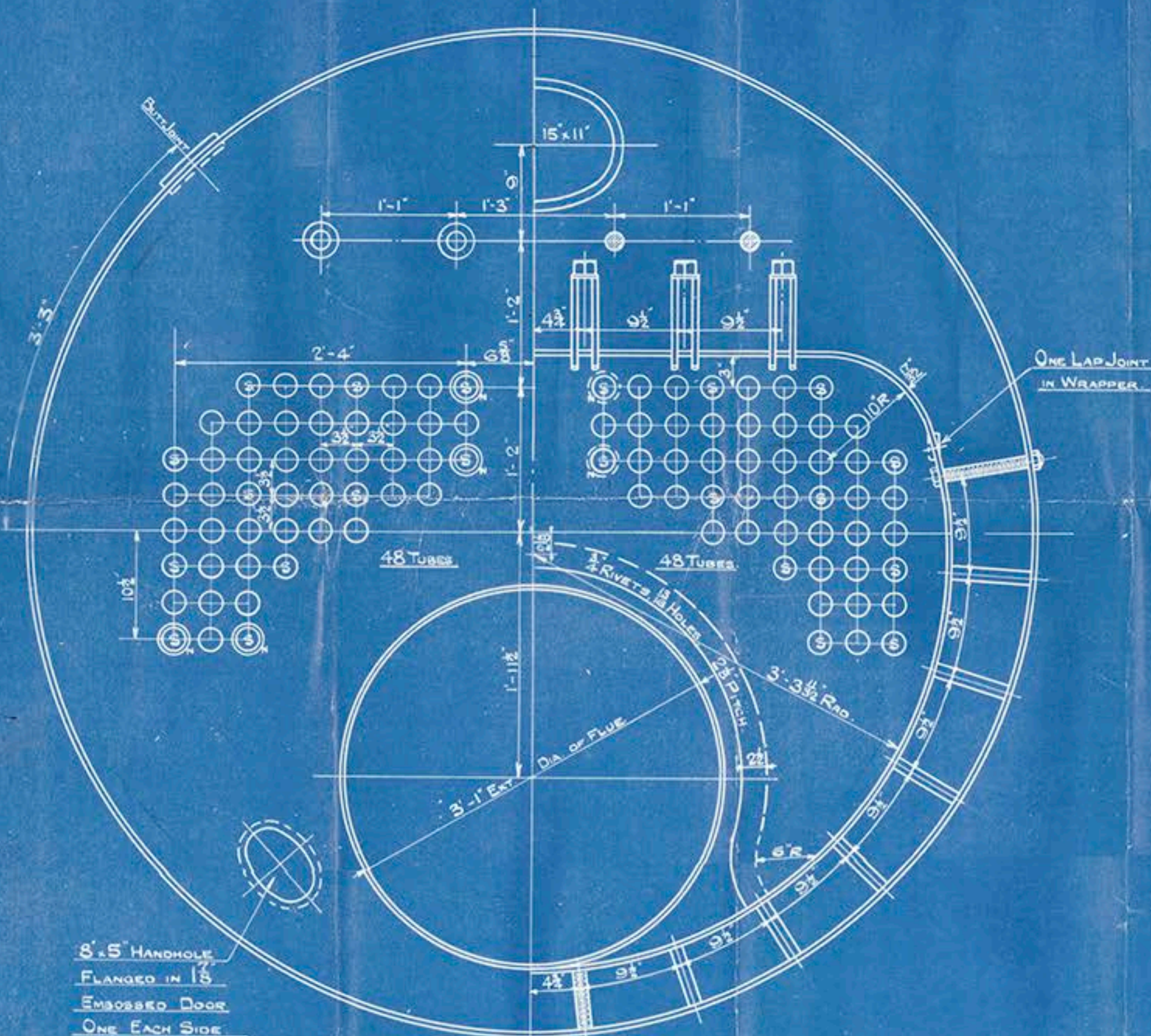
HEATING SURFACE	Sq. Ft.
IN TUBES	270
IN FLUES	25
IN COMB CHAMBERS	65
TOTAL	360
G.A. WITH 3" Ø BARS	11.25
RATIO $\frac{A}{B} = \frac{360}{11.25}$	$\frac{A}{B} = 32$



29/5/24

TENSILE LIMITS.	
SHELL, GIRDERS & BUTTSTRAPS	28 TO 32 TONS
LONGITUDINAL STAYS	28 TO 32 TONS
SCREWED STAYS	26 TO 30 TONS

ALL PLATES, BARS, GIRDERS AND RIVETS OF STEEL
TUBES OF IRON.



THE FORTH SHIPBUILDING &
ENGINEERING CO (1921) LTD
LINDSAY BURNET'S MOORE PARK
BOILER WORKS
GOVAN, GLASGOW.

DRAWING NO 9168.

MARINE BOILER 8'-0\"/>

LLOYDS SURVEY
SCALE: 1/2\"/>

DONKEY BOILER FOR SS 'STETTIN'

BLR. N^o 1819.

DIA. 8'-0" INT.

LENGTH 7'-3" OUT.

W.P. 80 LBS.

LLOYDS SURVEY.

DONKEY BLR. FOR S.S. "STETTIN"

16631
LLOYDS TEST.
160 LBS. WP. 80 LBS.
9.10.24. W.L.

Glasgow Rep. No. 114088

THE FOURTH SHIPBUILDING &



© 2018

Lloyd's Register
Foundation