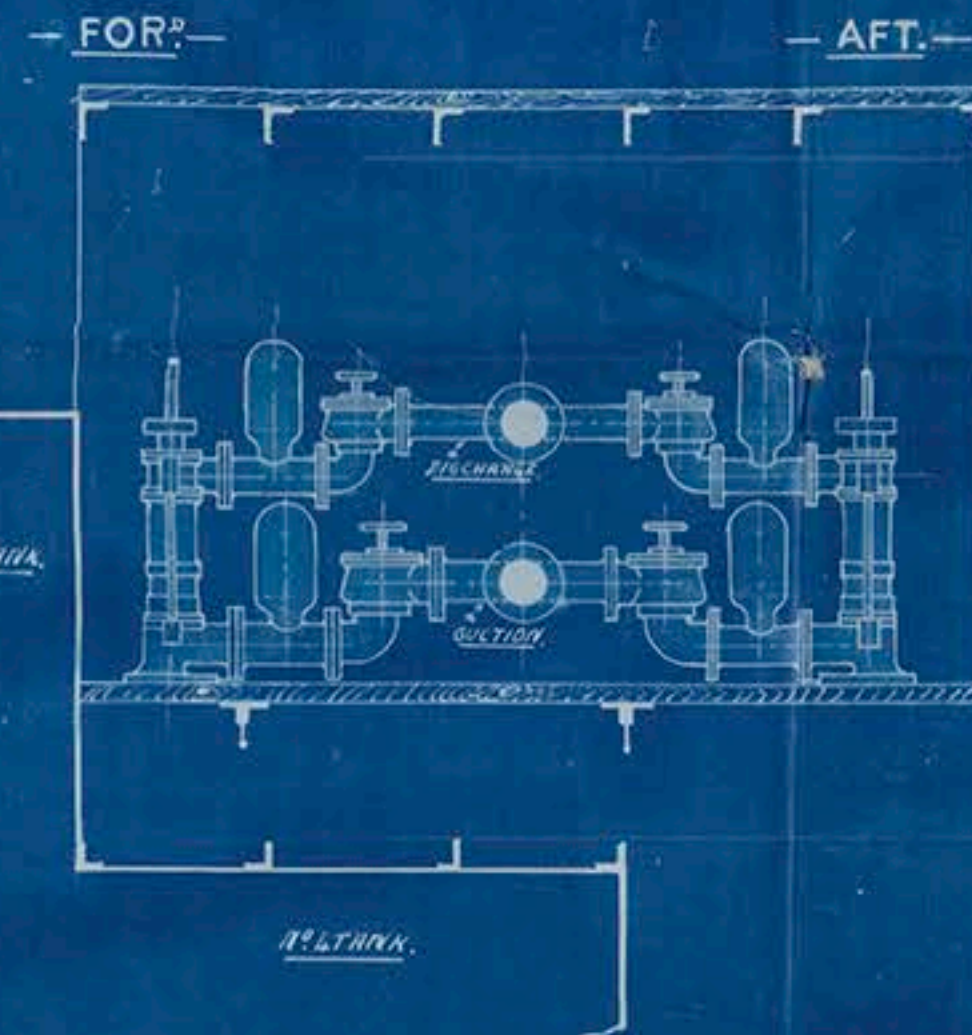
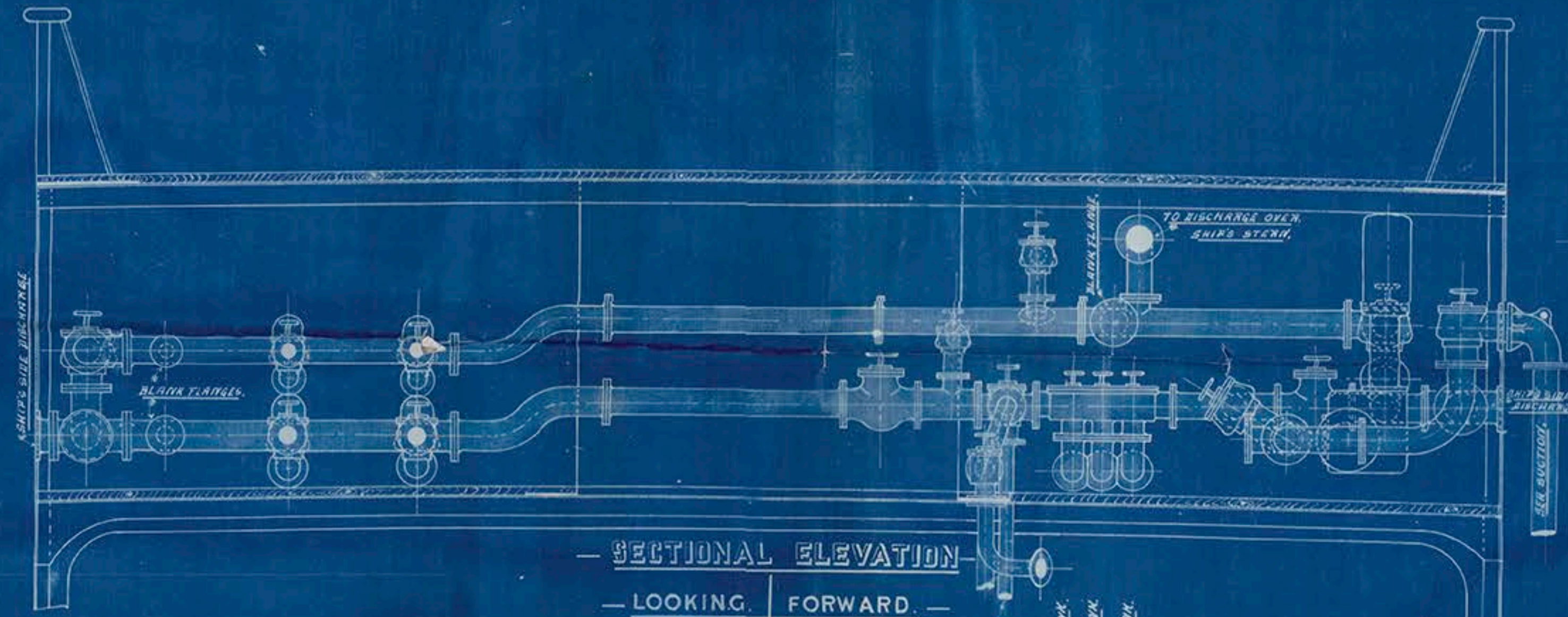


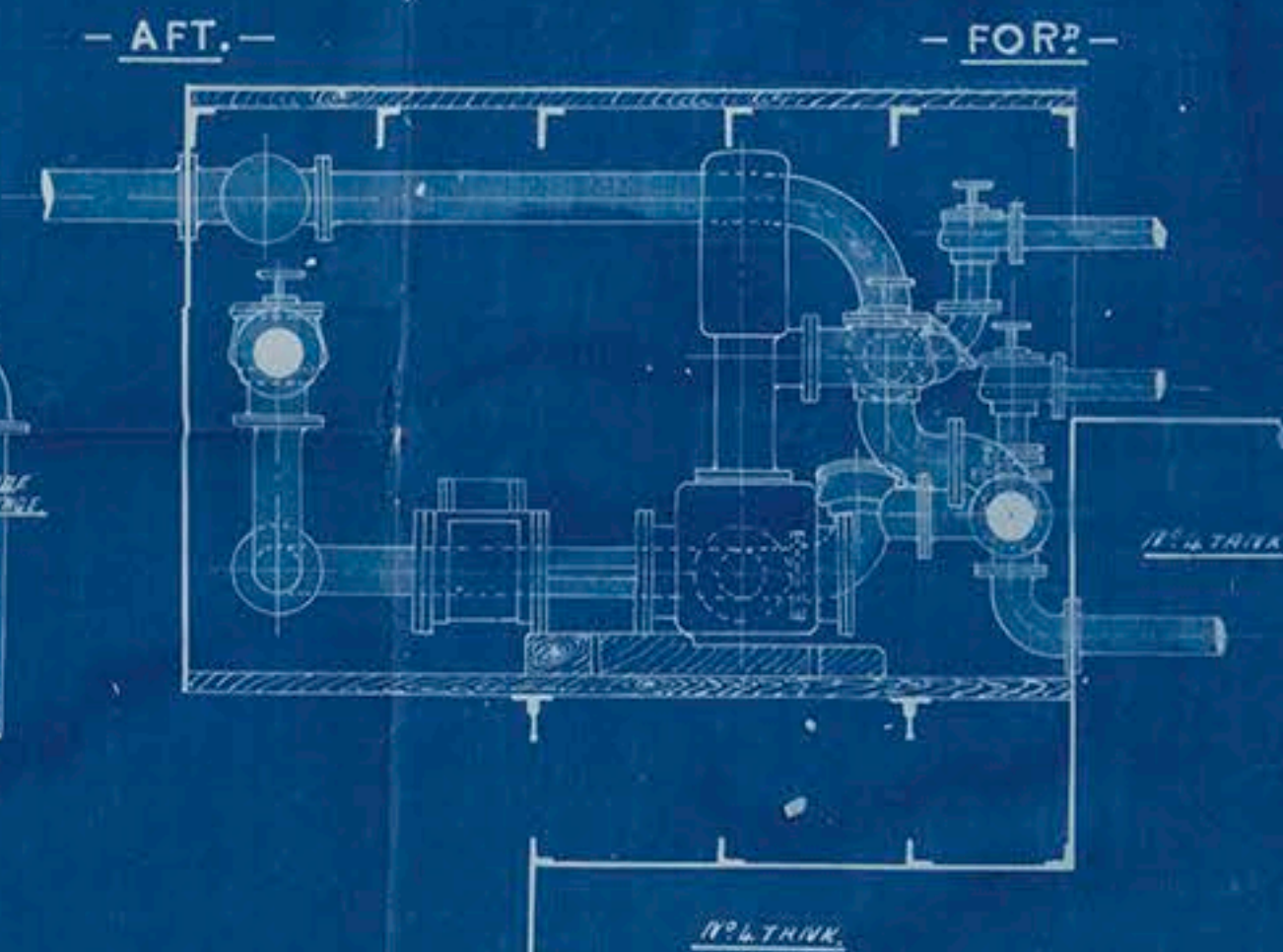
See Ship "Charles Howard" Rwe. Report No. 20216



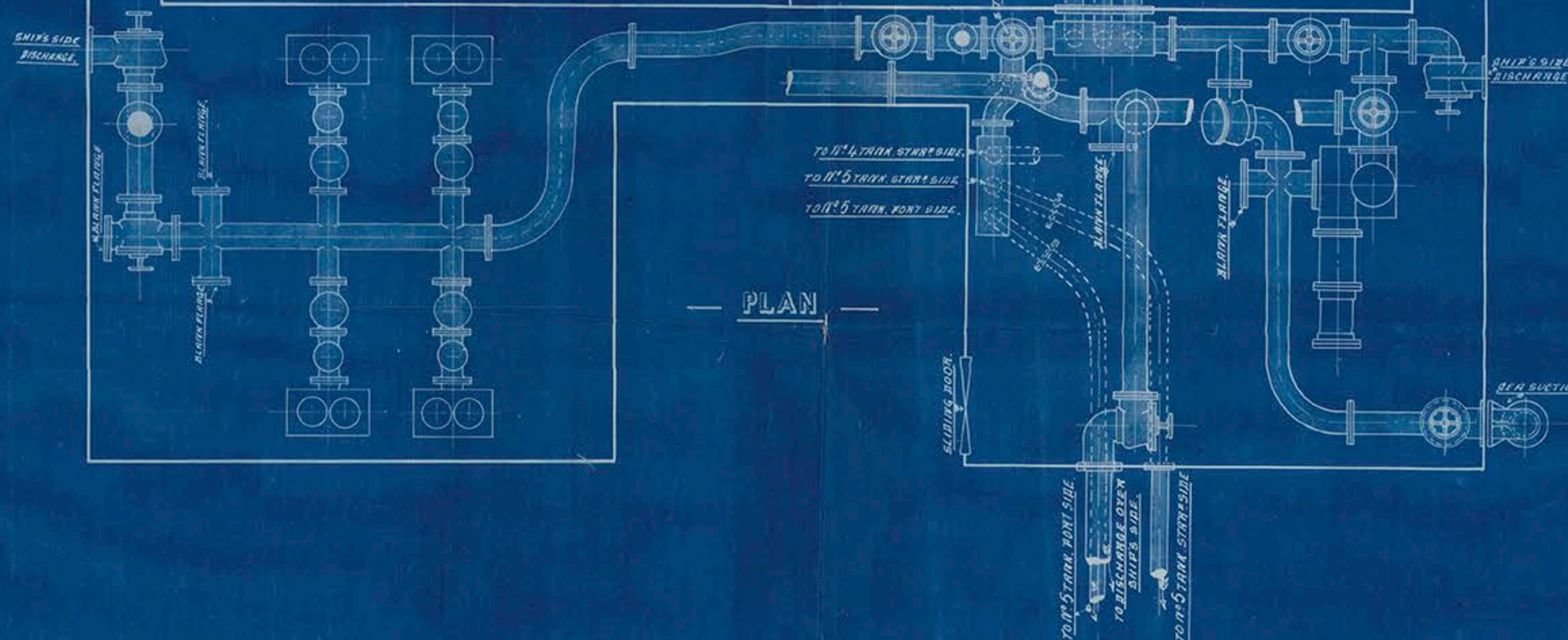
— LONGITUDINAL SECTION —
— THRO' HAND PUMPING HOUSE —



— SECTIONAL ELEVATION —
— LOOKING FORWARD —



— LONGITUDINAL SECTION —
— THRO' STEAM PUMPING HOUSE —



— PLAN —

— DETAILS OF ARRANGEMENT OF PUMPS & ETC. —

— FOR —
— OIL TANKS —

— S S CHARLES HOWARD —

— Scale $\frac{1}{2}$ Inch to one Foot —

March 14th 1884

WESTGARTH ENGLISH & Co.,
ENGINEERS AND
BOILER MAKERS,
MIDDLESBROUGH.