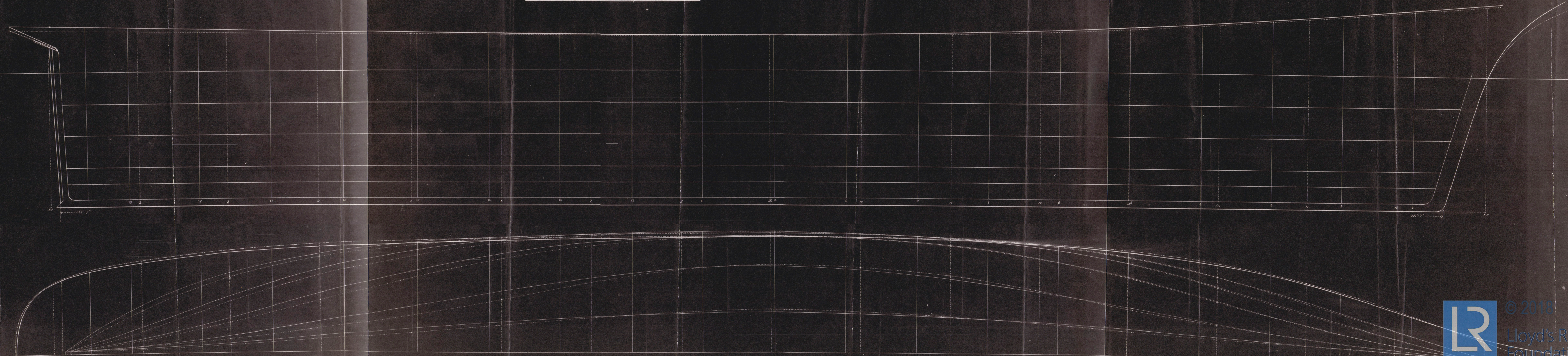
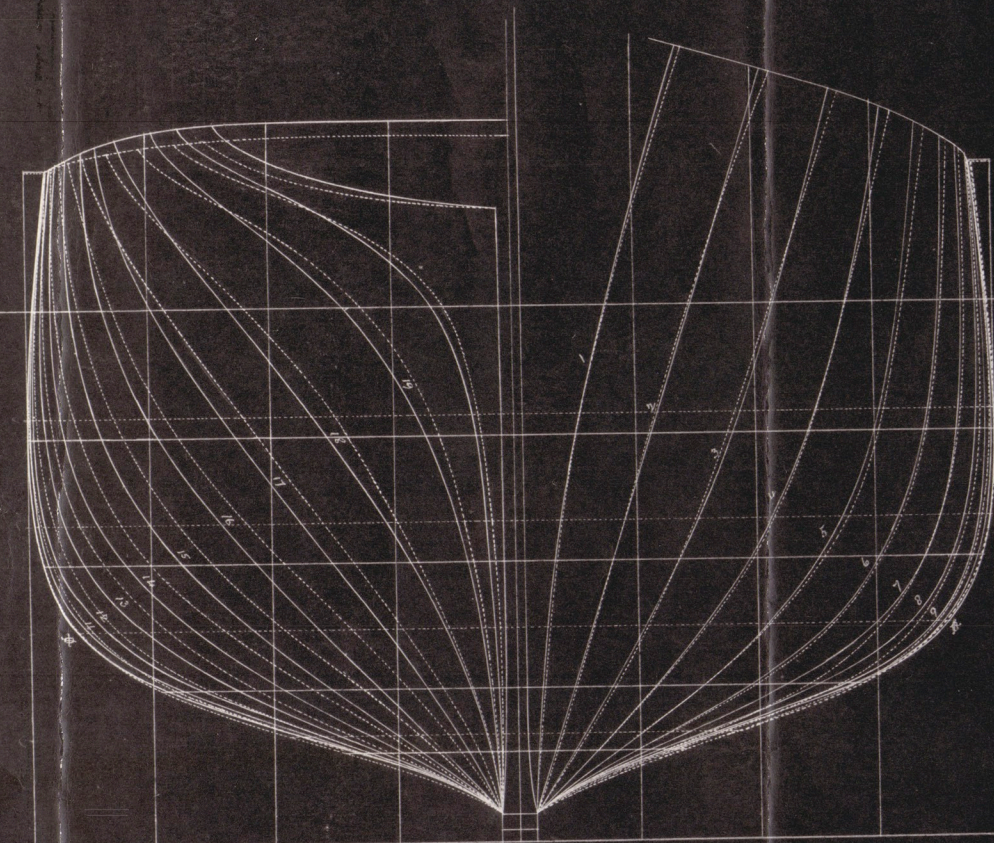


Lines of the Composite Tea Clipper "Cutby Lark" constructed from measurements and particulars of the vessel obtained by Mr. Chas. H. Jordan when in dry dock at the 'Union Docks' of Messrs Fletcher, Son & Fearnell, Limehouse, London, January 1922.

The dotted lines represent the Lines of the vessel constructed by the Draughtsman of the above firm (Mr. W. Gregson) from dimensions and particulars of the vessel obtained by him while in dry dock on the above occasion.

Scale $\frac{3}{16}$ ths of an inch equal to one foot.



© 2018
Lloyd's Register
Foundation

DRAWN BY CHAS. H. JORDAN, M. Inst. N. A., APRIL 1922.