

N^o 409 MIDSHIP SECTION

SCALE 1/4" = 1 FOOT

SHOWING PROPOSED REDUCTION IN SCANTLINGS OF TOPSIDE PLATING, AND PLATING OF B, C AND D DECK.

NOTE - THE SIZES OF RIVETS, BREADTHS OF LAPS, STRAPS AND LANDINGS WILL BE IN ACCORDANCE WITH THE RULES FOR THE REDUCED THICKNESS OF THE PLATING.
BUTT - RIVETING

KEEL PLATE BUTT RIVETS THROUGHOUT. NO STRAPS IN WAY OF 3 THICKNESSES. SINGLE STRAPS INSIDE AT ENDS.

SHELL PLATING STRAKES A TO N INCLUSIVE TO HAVE DOUBLE STRAPS ON ALL OUTER STRAP DOUBLE RIVETED IN END. AT ENDS TO HAVE QUADRIPLATE TO TRIPLE OVERLAPS. STRAKES O TO Y INCLUSIVE TO HAVE DOUBLE STRAPS. STRAKES Z, A, B, & C, BOTH THICKNESSES IN WAY OF DOUBLE PLATING HAVE SINGLE STRAPS DOUBLE RIVETED AT EACH BUTT. THE STRAPS EXTENDING VERTICALLY TO BE SPACED ONE STRAP SPACE (STRAP 1/2" THICK) STRONG THE EDGES OF THE PLATING WHICH ARE STRAPPED. STRONG THE DOUBLE PLATING BUTTS TO BE QUADRIPLATE LAPS.

B DECK IN WAY OF DOUBLE PLATING BUTTS TO HAVE DOUBLE STRAPS DOUBLE RIVETED FOR BOTH THICKNESSES. UPPER STRAP 7/16" STRAP 1/2" TO HAVE QUADRIPLATE LAPS TO DOUBLE. LOWER STRAP 3/16" STRAPS TO DOUBLE LAPS.

C DECK STRONGER TO HAVE DOUBLE STRAPS AND SHIP QUADRIPLATE LAPS ABOVE TRIPLE RIVET. BELOW AT ENDS BUTTS TO BE QUADRIPLATE TO TRIPLE LAPS. THE STRAKES NEXT TO STRONGER QUADRIPLATE LAPS AND SHIP DOUBLE LAPS AT ENDS. REMAINING STRAKES TRIPLE LAPS AND SHIP TO DOUBLE AT ENDS.

D DECK STRONGER QUADRIPLATE LAPS AND SHIP TO TRIPLE AT ENDS. STRAKES NEXT TO STRONGER QUADRIPLATE LAPS AND SHIP TO TRIPLE LAPS AT ENDS. REMAINING STRAKES TRIPLE LAPS AND SHIP TO DOUBLE AT ENDS.

E, F & G DECK STRONGER TRIPLE LAPS THROUGHOUT. STRAKES NEXT TO STRONGER TRIPLE LAPS AND SHIP TO DOUBLE AT ENDS. REMAINING STRAKES DOUBLE LAPS AND SHIP TO DOUBLE AT ENDS.

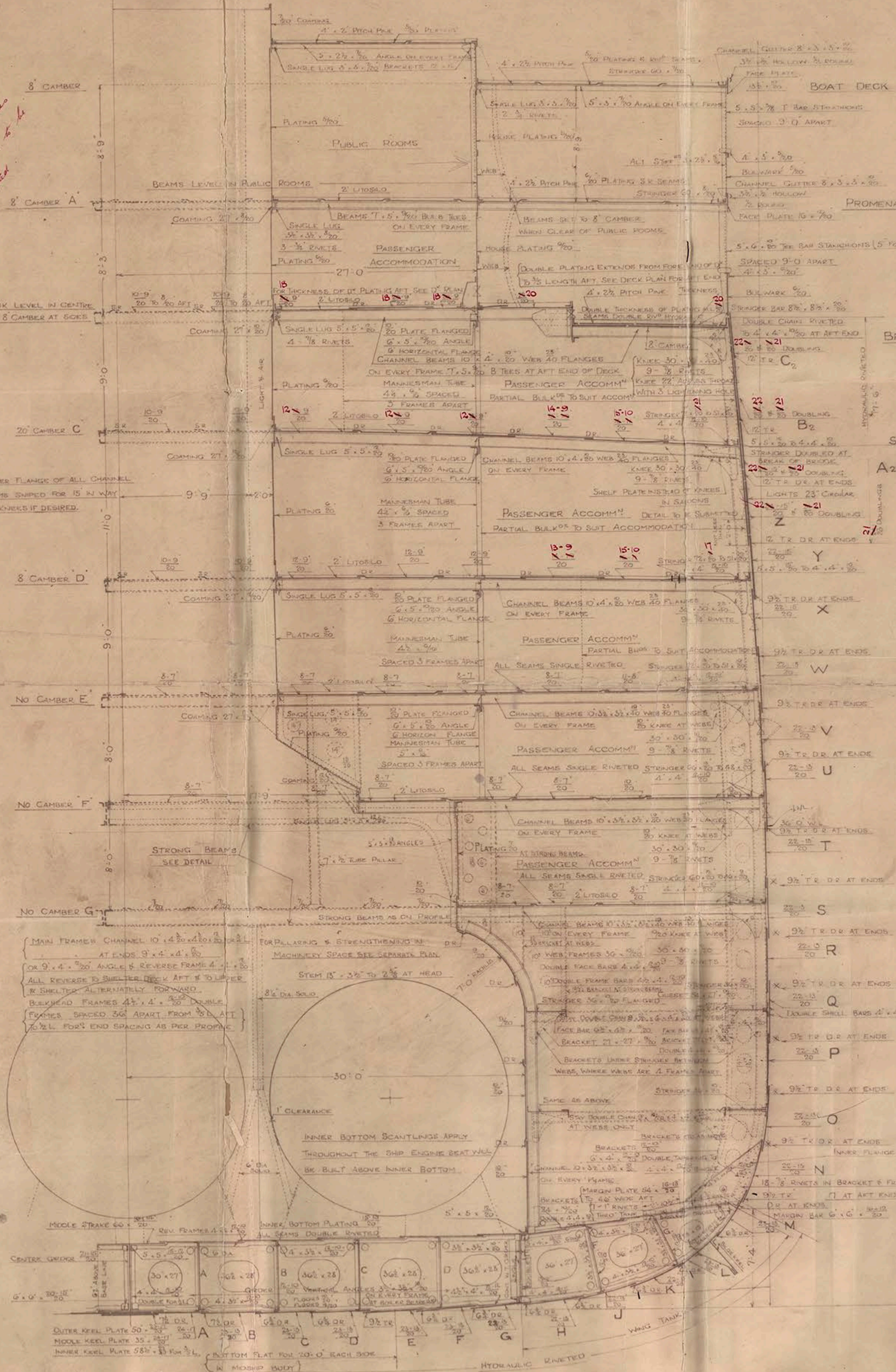
INNER BOTTOM CENTRE STRAKE QUADRIPLATE LAPS THROUGHOUT. REMAINING (INCLUDING MARGIN) QUADRIPLATE LAPS AND SHIP TO TRIPLE AT ENDS.

CENTRE GIRDER DOUBLE STRAPS DOUBLE RIVETED AND SHIP TO QUADRIPLATE LAPS AT ENDS. NO STRAPS TO TOP OF BOTTOM BARS.

RIVETS THIRD FLAMES & SHELL TO BE NOT MORE THAN 6" APART NOR LESS THAN 5/16" DIA. THROUGHOUT. SPACING OF RIVETS IN ORAL BLANKER BULKHEADS WHICH ARE MADE TO TALK ON TO BE 3/4" DIA. APART CENTRE TO CENTRE. AND AS PER SECTION G9 PAR 10, OF RULES.

SEAMS OF SIDE PLATING TO BE TRIPLE RIVETED FOR 1/2" LENGTH ENDWARDS. EXCEPT WHERE QUADRIPLATE OR 2 SEAMS ARE REQUIRED DOUBLE AT ENDS.

NOTE THERE SEAMS ARE TO BE QUAD RIVETED FOR 6" AFT BOOKS FOR EXTENT SHOWN ON SHELL EXPANSION.



Printed S.T.
31.1.12.

RETAIN
J. BROWN & CO

No 409.

MIDSHIP SECTION

"AQUITANIA"

CLS 34050.

PLAN No 2



© 2018

Lloyd's Register
Foundation