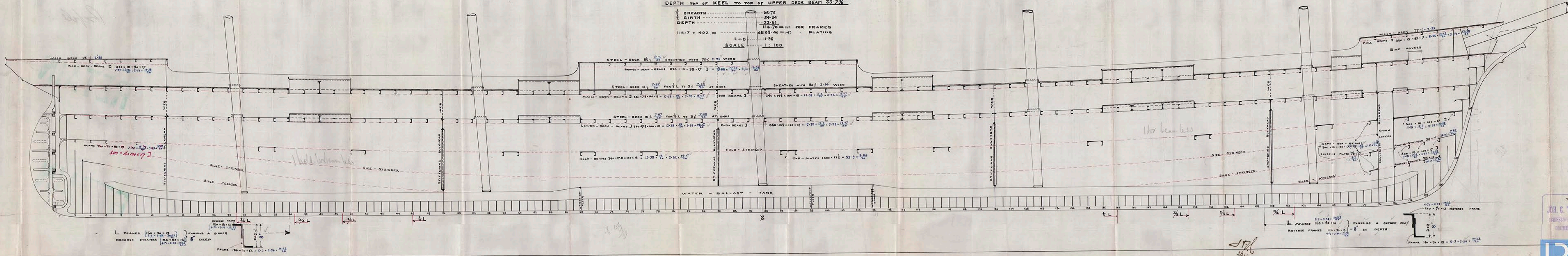


76.6.07

PROFILE.
OF
FIVE MASTED SHIP 179.

CLASS	LLOYDS 100. A.I. STEEL.	1/11
LENGTH BETWEEN PERPENDICULARS	402.0	
BREADTH MOULDED	53.6	
DEPTH TOP OF KEEL TO TOP OF UPPER DECK BEAM	33.7 1/2	
1/2 BREADTH	26.75	
1/2 GIRTH	54.34	
DEPTH	33.61	
114.70 = N: FOR FRAMES		
46109.40 = N: PLATING		
L+D	11.96	
SCALE	1:100	



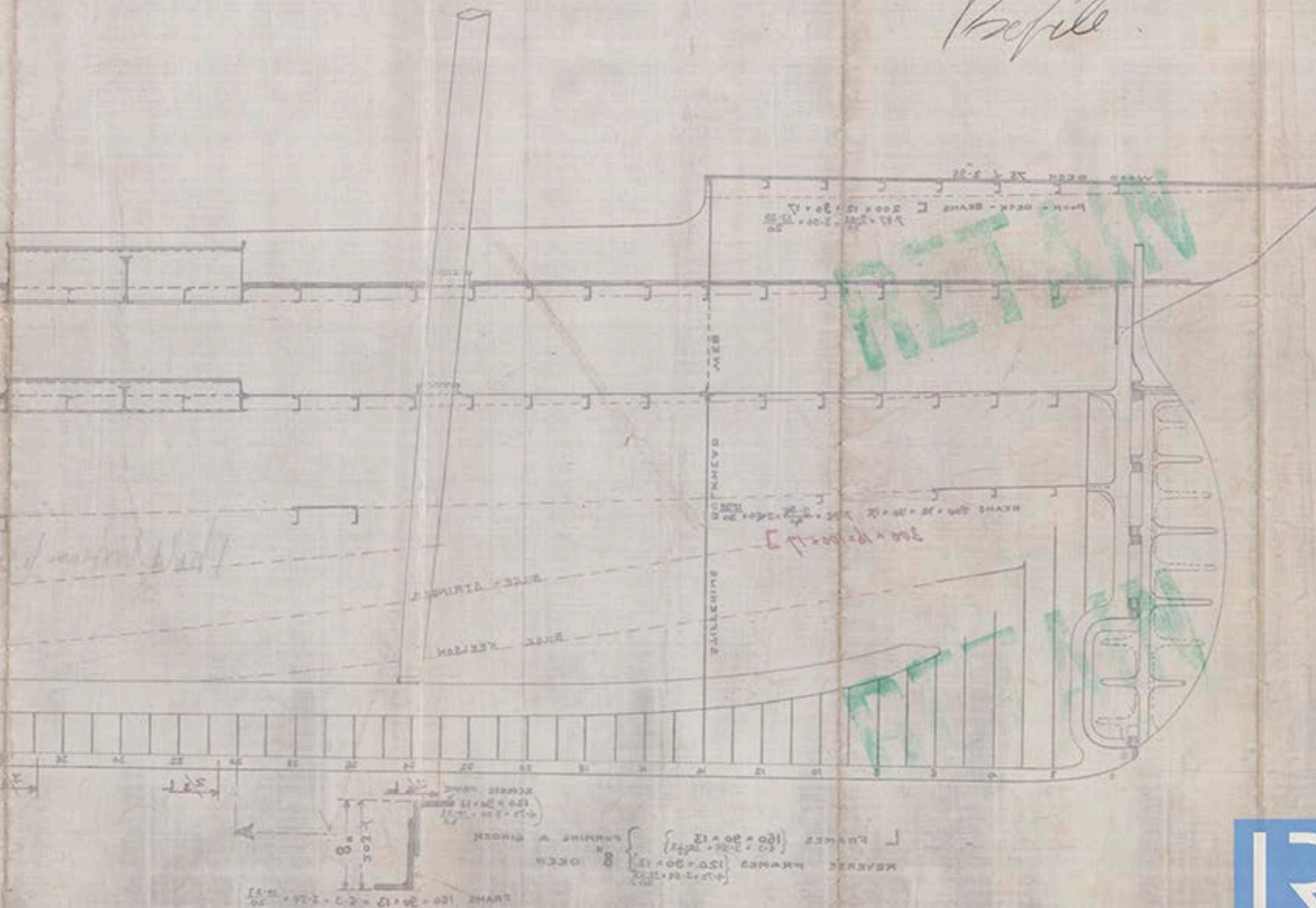
179883
JOH. C. TECKLENBURG A.-G.
SCHIFFSWERFT und MASCHINENFABRIK
BREITENBURG-GEESTMÜNDE
1916.07.
© 2018

"Prussian"

Plan 8349

W. J. N.

Profile



© 2018

Lloyd's Register
Foundation