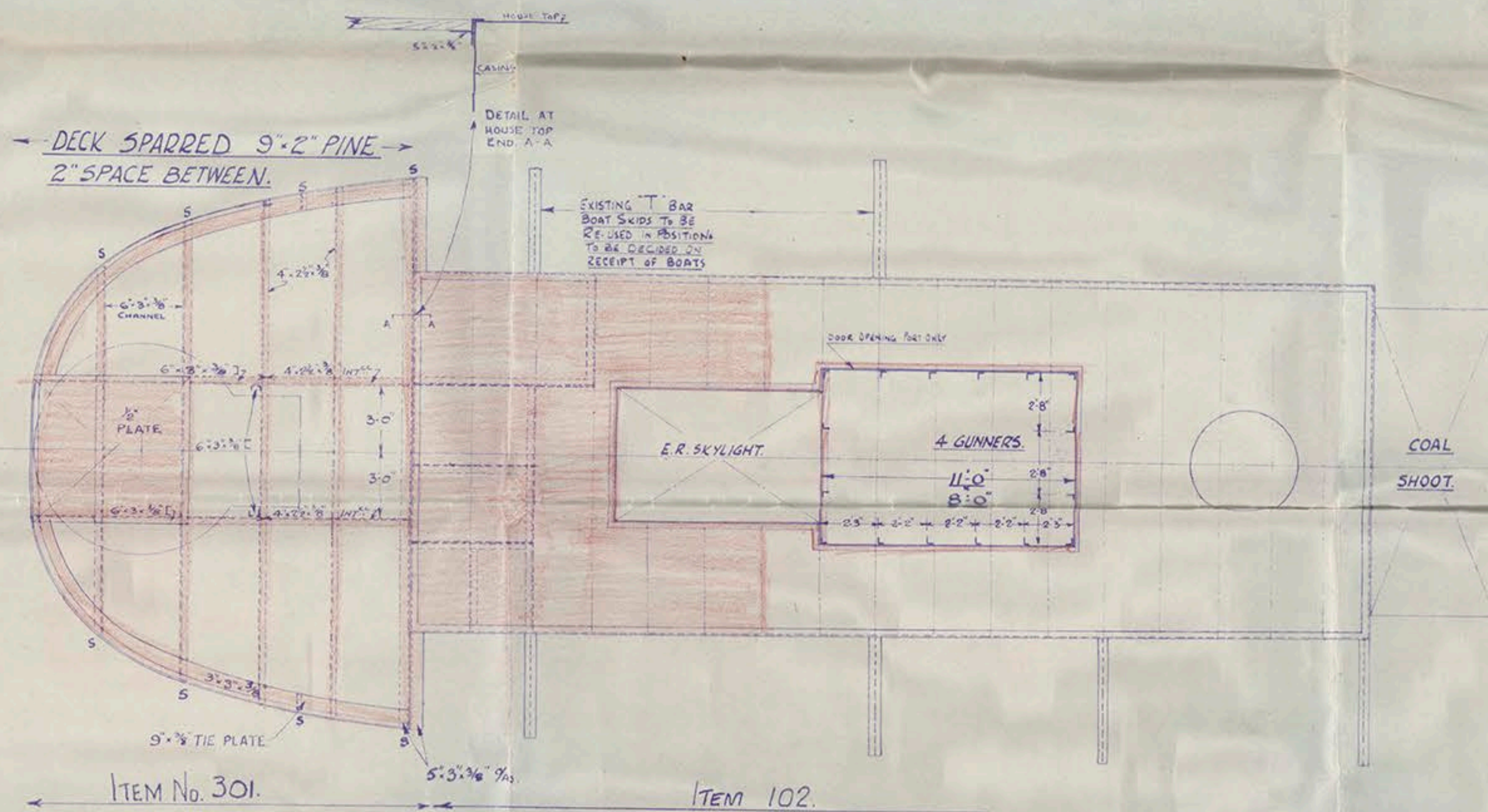
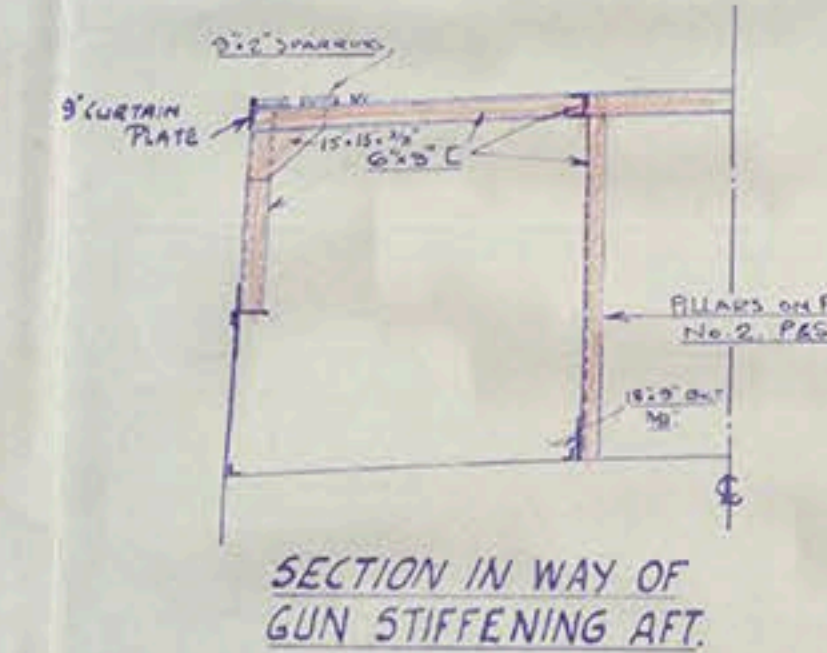
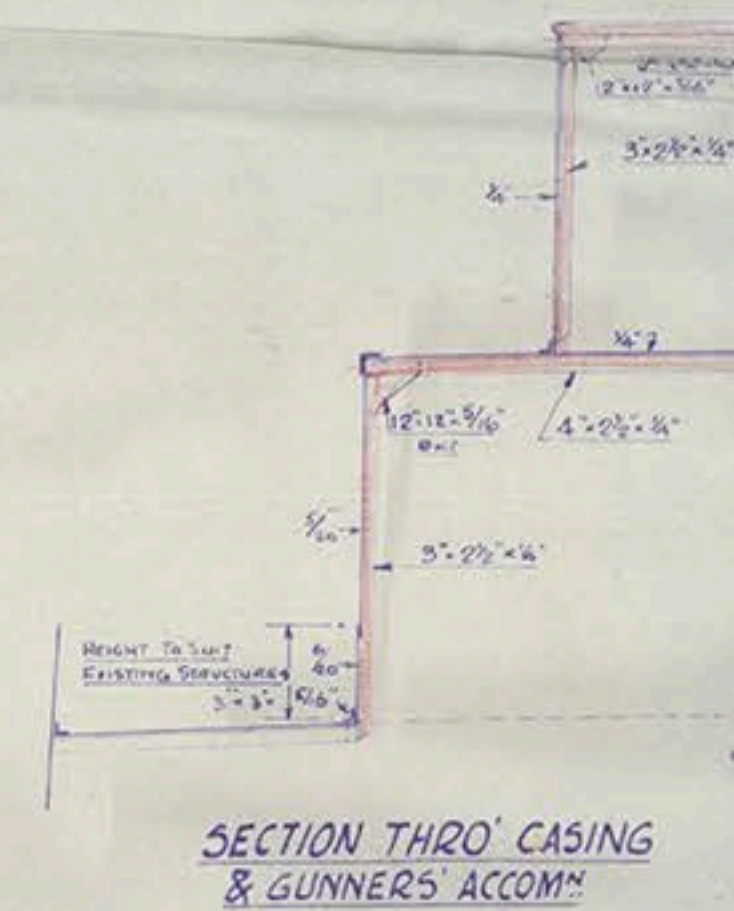
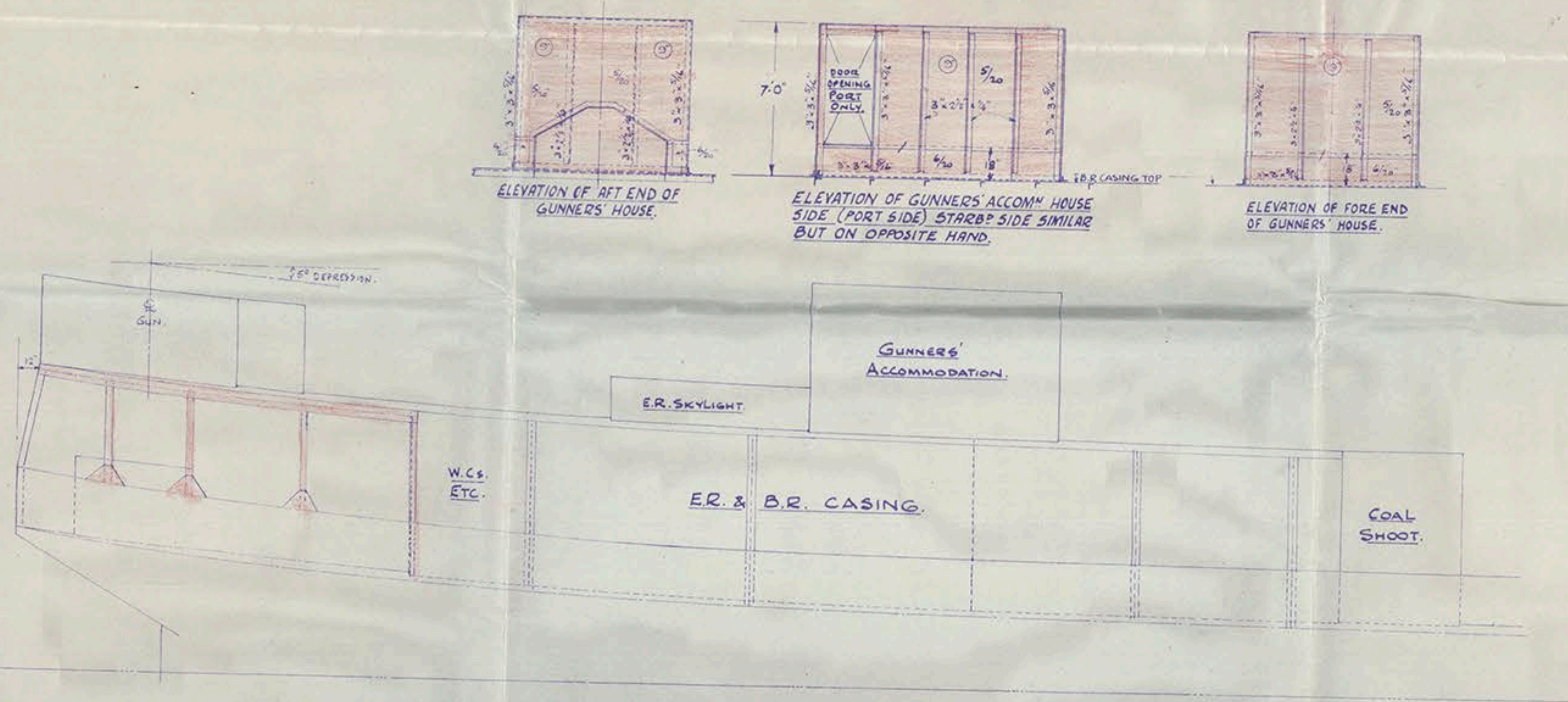
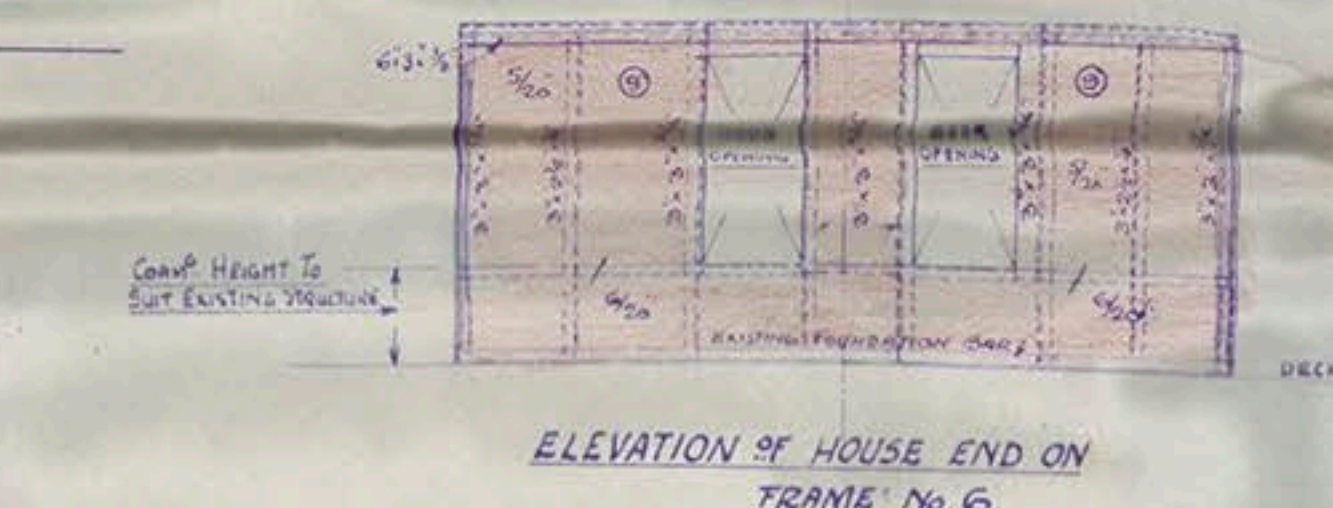
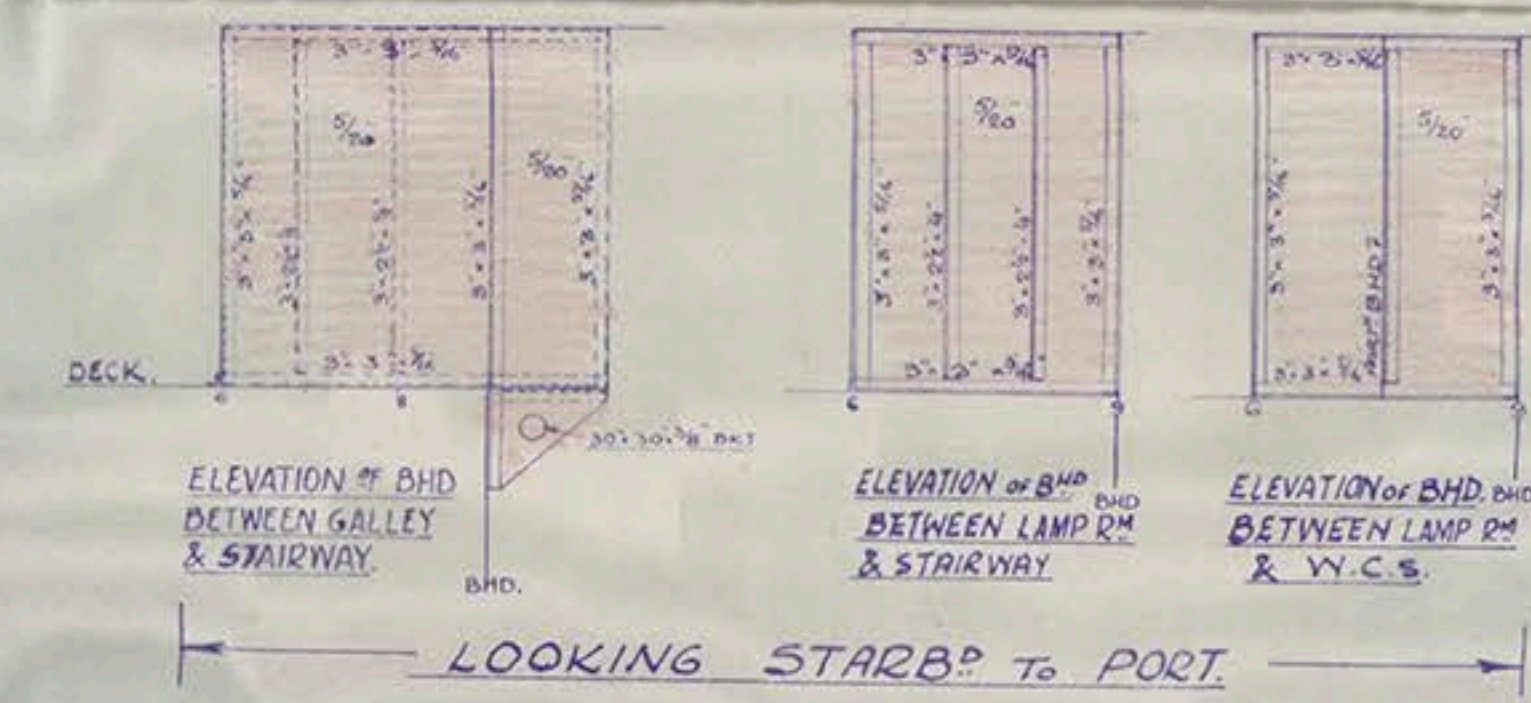
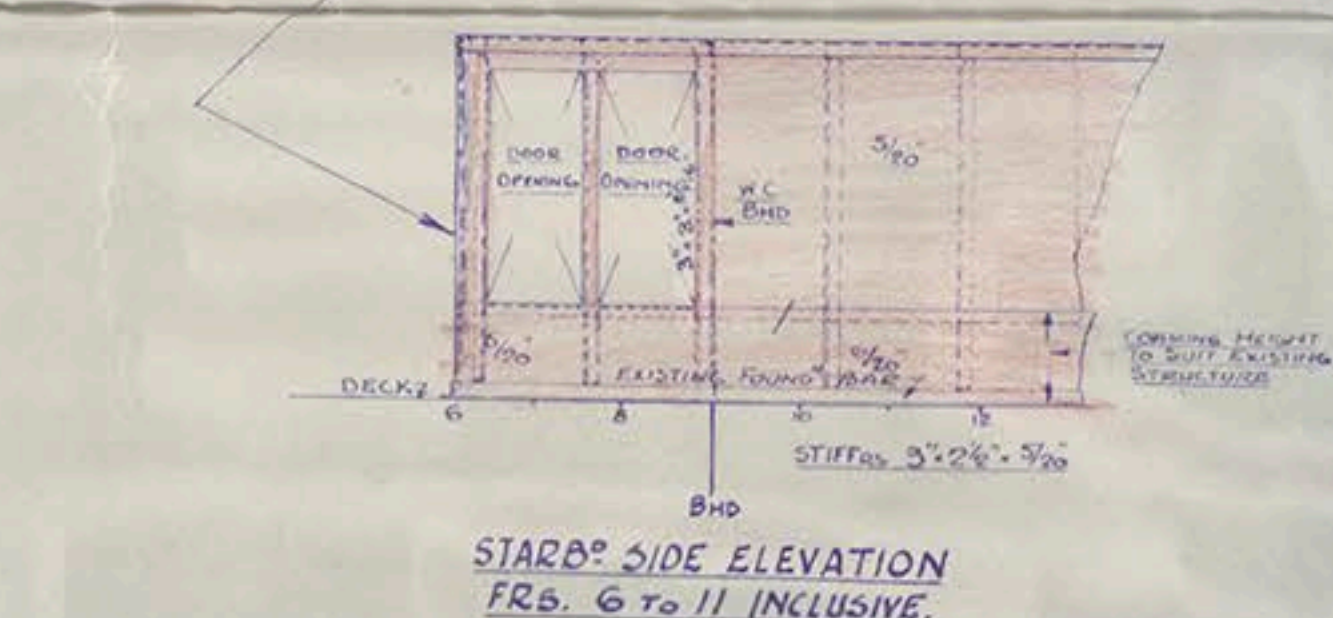
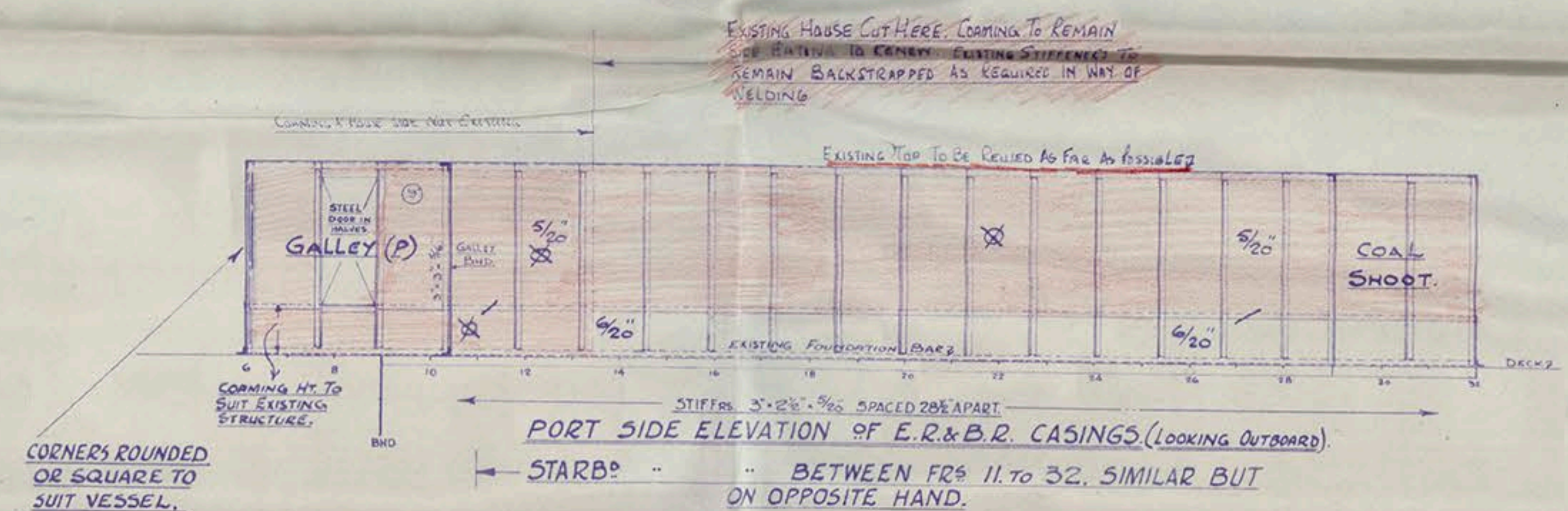
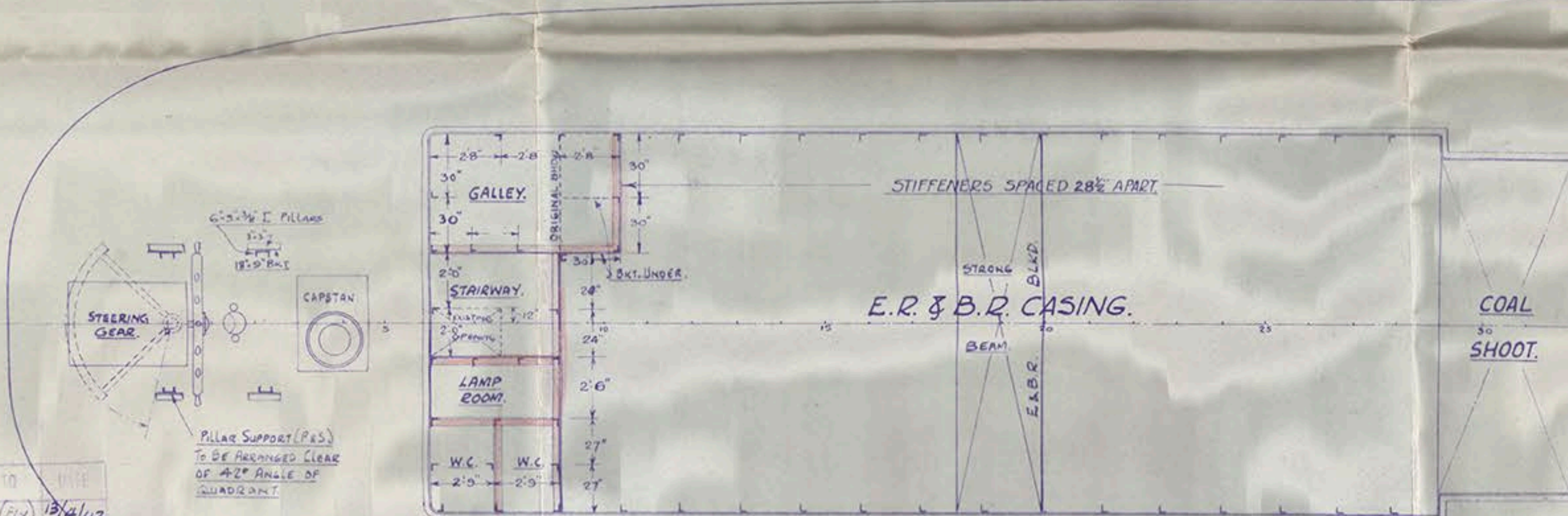


9686

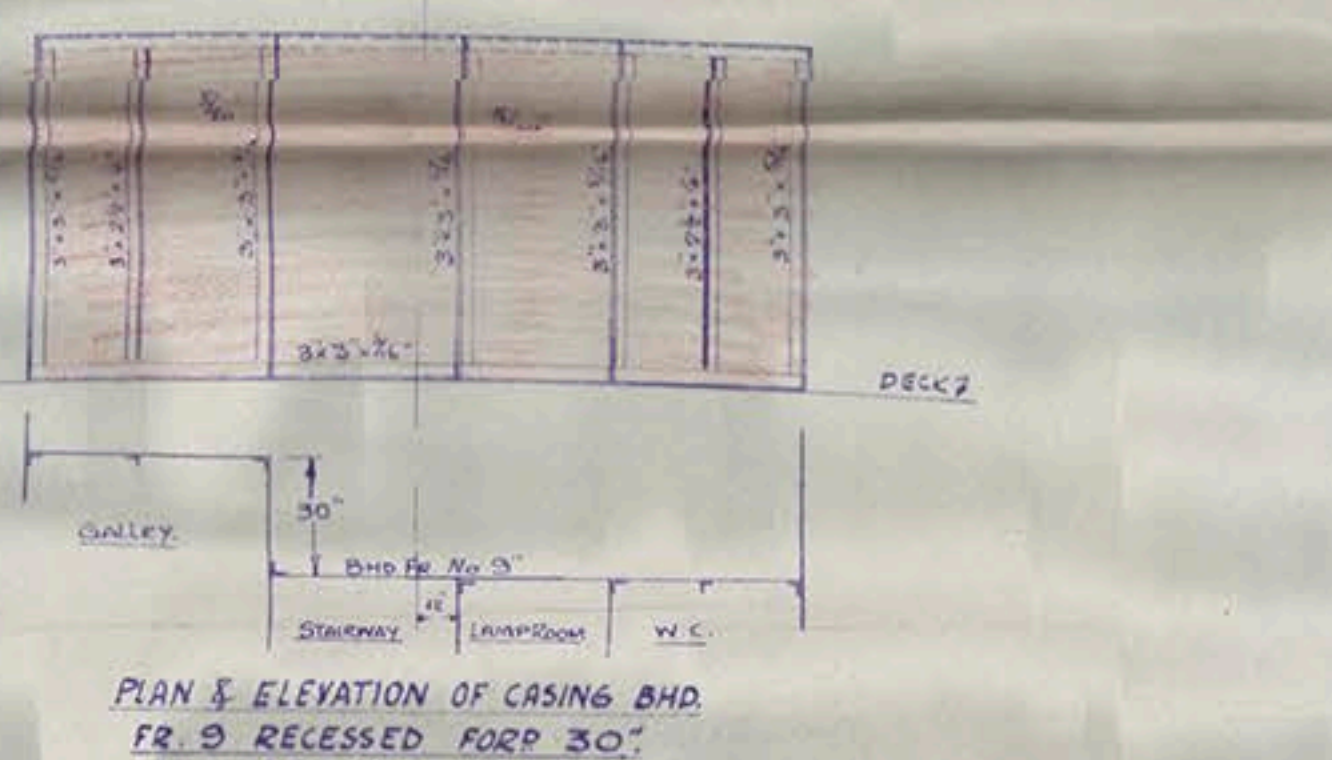
$\frac{3}{8}$ "EMERALD" / 102.
 NEW E.R. & B.R. CASING, W.C.s. ETC.
 & GUNNERS' ACCOMMODATION,
 & GUN STIFFENING (AFT)
 SCALE $\frac{1}{4} = 1'-0"$



GUN STIFFENING DETAIL.



NOTE :- EXACT HEIGHT, CAMBER & SHEER TO BE LIFTED AT SHIP.



9686.

W.J.
 16.4.42

DRAWN BY F.S.H. DATE 13/4/42.
 CHECKED BY DATE
 APPROVED BY DATE

"Emerald"

G. + B. Casung
etc

Lon 110594



© 2018

Lloyd's Register
Foundation

LR-FAF-1822-P-12