

No. 887 SHIP.

MIDSHIP SECTION.

MOULDED DIMENSIONS 345'0" x 48'9" x 25'7".

SCALE 1/2" = 1 FOOT.

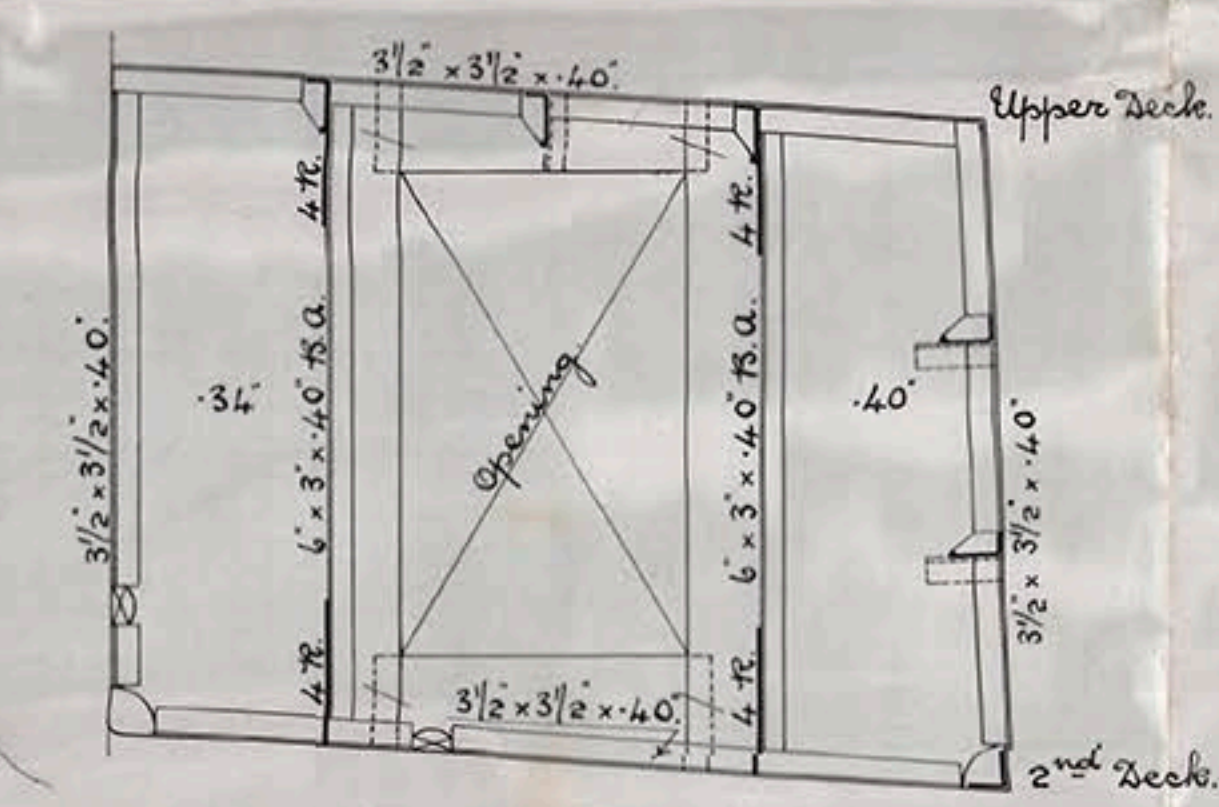
CLASS + 100 A.1 LLOYDS (LONGITUDINAL FRAMING)

Equipment Numerals.

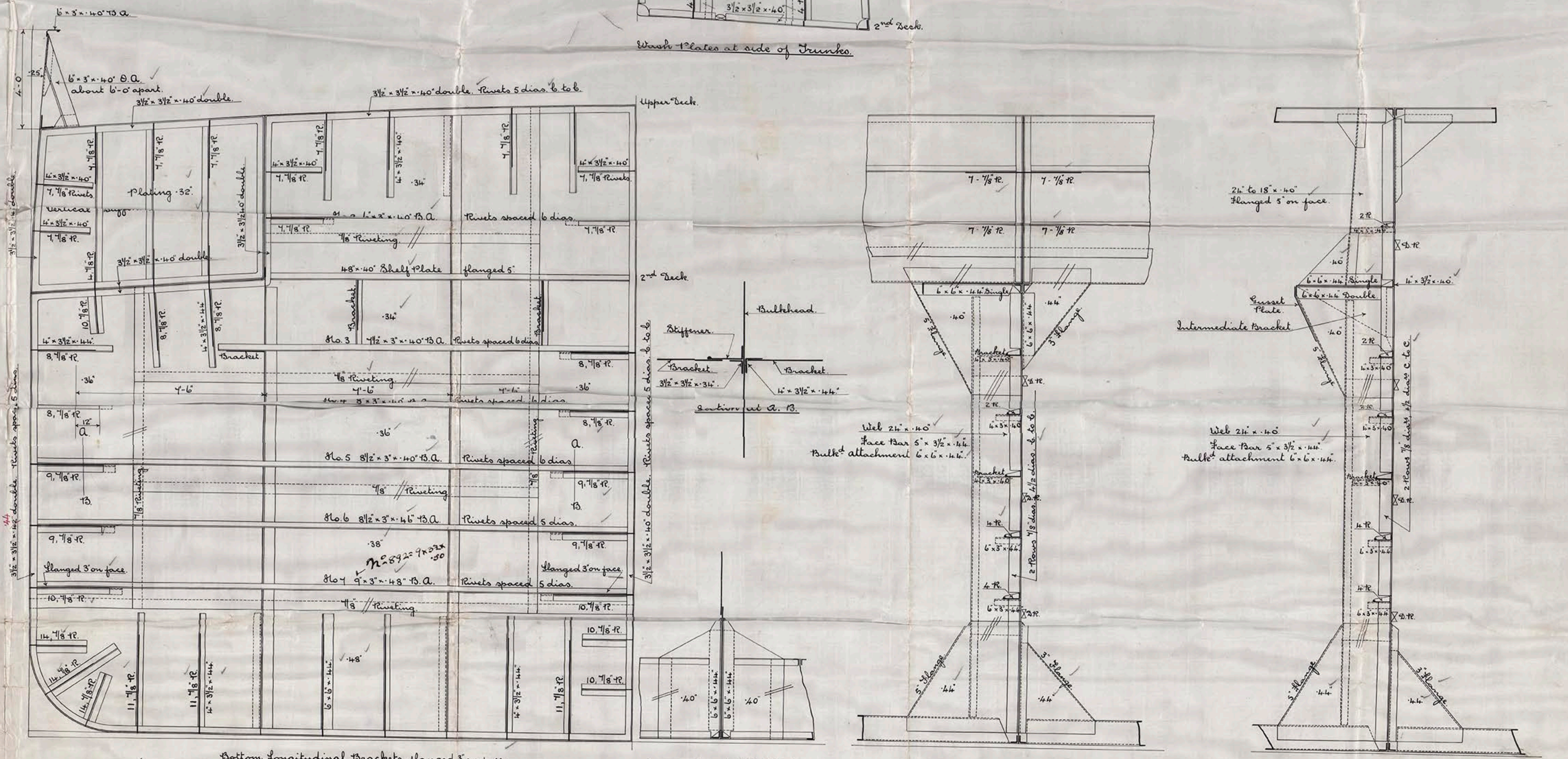
Longitudinal No.	= 74-33 x 34.5 = 2564.
Prop.	= 64-83 x 8 x 115 = 509
Bridge	= 37-33 x 8 x 115 = 274
Forecastle	= 64-00 x 8 x 115 = 216
Casing	= 48-5 x 7.25 x 5 = 176
House	= 59 x 8 x 5 = 236
Numerals	= 27005

Equipment.

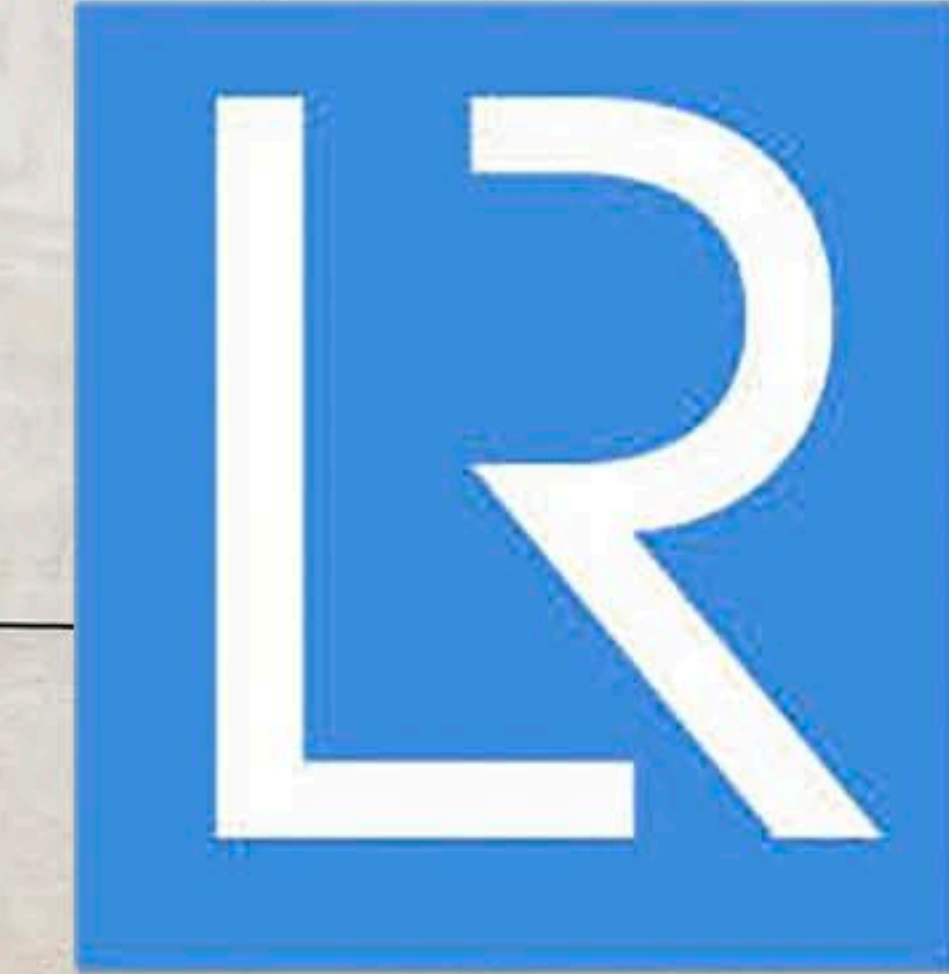
1 Bower Anchor (Blockless Type) 48 3/4 cwt.	
1 Stream (Rodgers) (ex Block) 13.	
1 Sledge (Rodgers) (ex Block) 13.	
270 Tatham's Stud Chain Balls 2" dia 538-3-0.	
90 Steel Stream Wire 1/2	
120 Tomline (S.W.) 1/2	
90 Manila	
90	
90	



Note: The lower strakes of Longitudinal & Transverse Bulkhead Plating, excluding Centre Keel & Floor Plate, to be increased as per rule, where bulkheads are of increased depth due to sheer. Where additional stiffeners are required in view of increased depth due to sheer, Stiffeners to be graduated from top of tank. The additional Stiffeners to be increased above size of lowest Stiffener shown on Bulkhead Plan, 1/2 an inch in depth or in thickness for each additional stiffener.



Elevation of Web at



© 2018
Lloyd's Register
Foundation

1/11/15

Armstrong Whitworth & Co.

S.S. No 887.4892.

345'-0" x 48'-9" x 25'-7" max

Class 100 A.1.

Carrying Petroleum in bulk

Longitudinal framing.

MIDSHIP SECTION.

S.S. 'BRITISH SOVEREIGN'
NEWCASTLE ON TYNE.

Report No. 70092

British Sovereign

S.S. British Emperor

Report No. 69220



© 2018

Lloyd's Register
Foundation