

No. 887 SHIP. 7/10/92

PROFILE & DECK PLANS.

MOULDED DIMENSIONS 345-0 x 48-9 x 25-7.

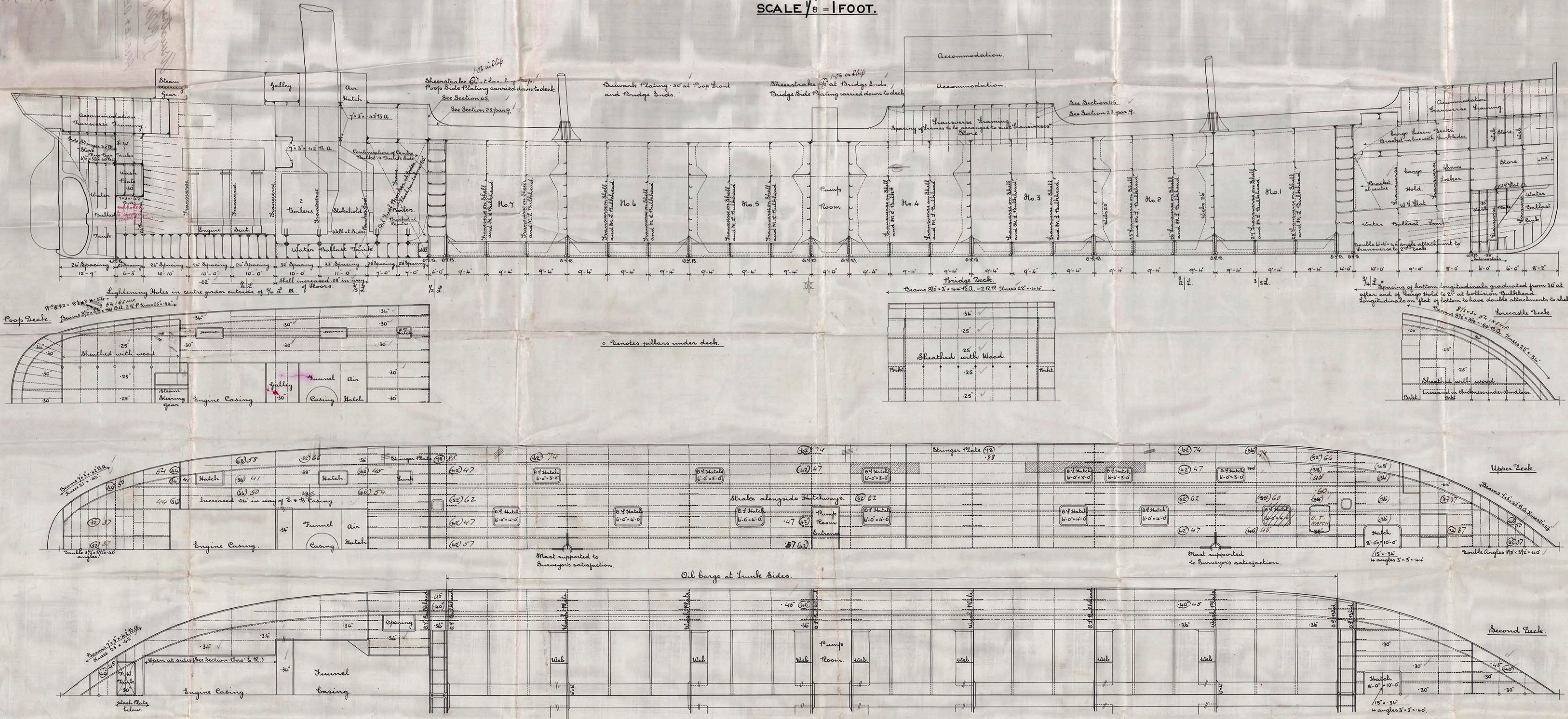
SCALE 1/8" = 1 FOOT.

Scantling Numbers

1st St. 74-33

Longitudinal St. 25644

2nd St. 13-49



Newstray Whiteheads
S.S. No 887.4892.

PROFILE & DECK PLAN.

S.S. BRITISH SOVEREIGN

NEWCASTLE ON TYNE

Report No. 70092

S.S. BRITISH EMPEROR

NEWCASTLE ON TYNE.

Report No. 69220



© 2018

Lloyd's Register
Foundation