

14/11/8

PLAN No 39/882.
No 882.

QUARTER DECK PLATING

SCALE 1/2" = ONE FOOT.

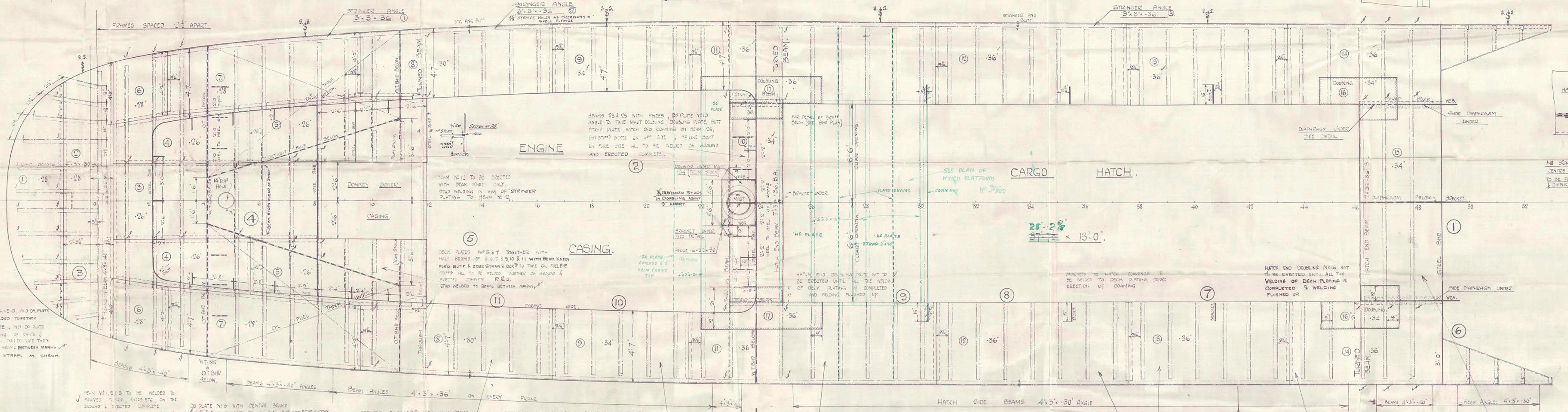
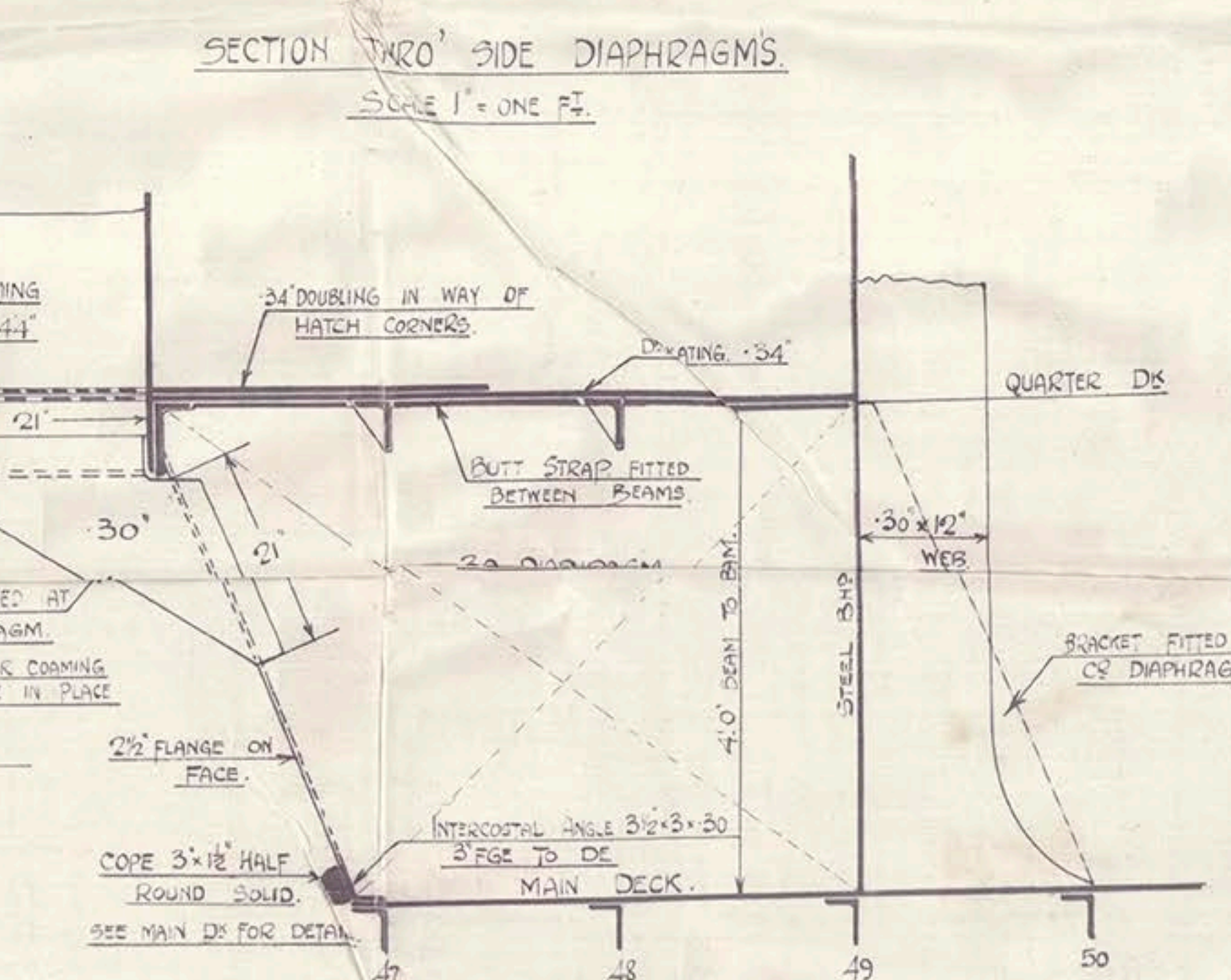
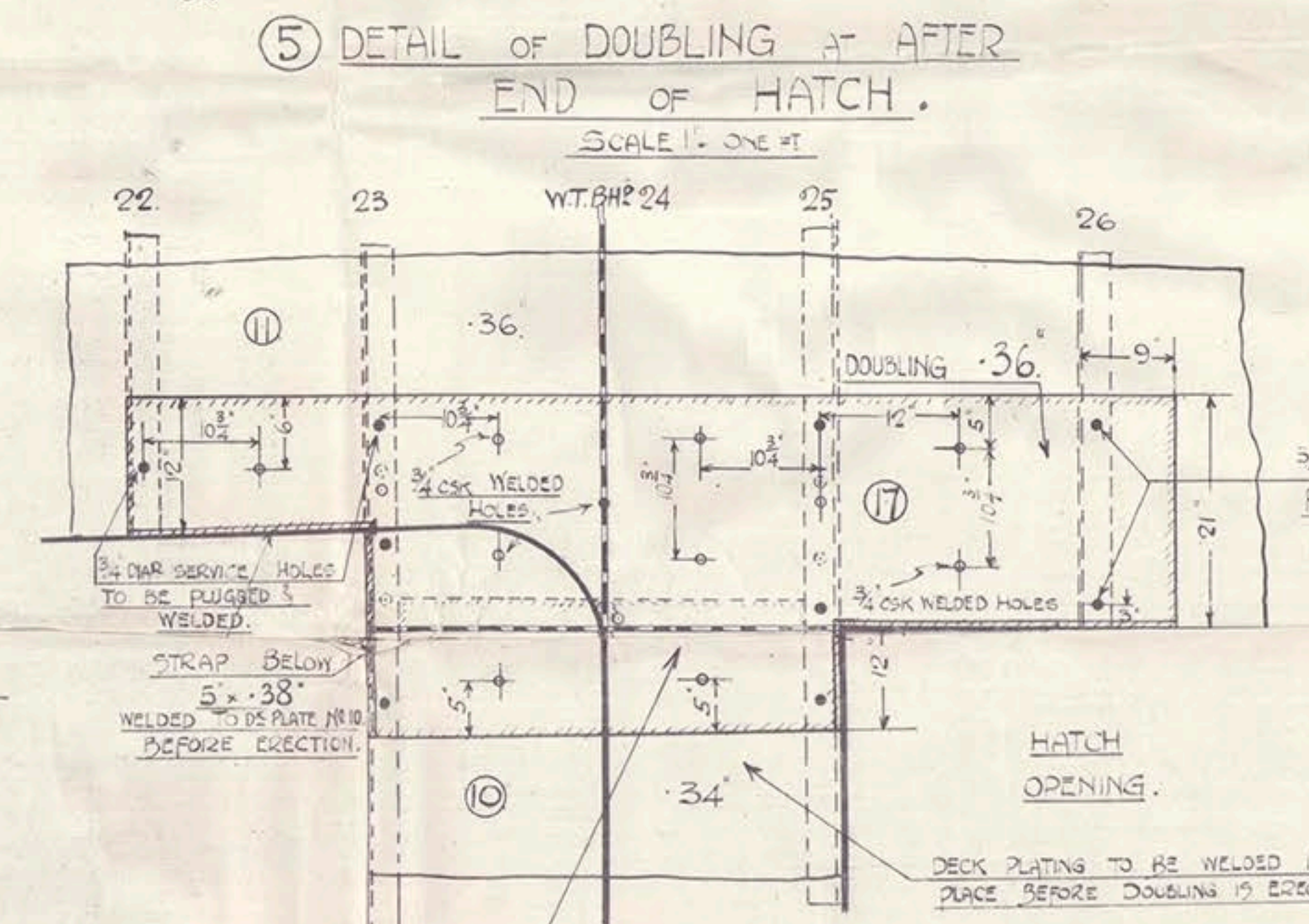
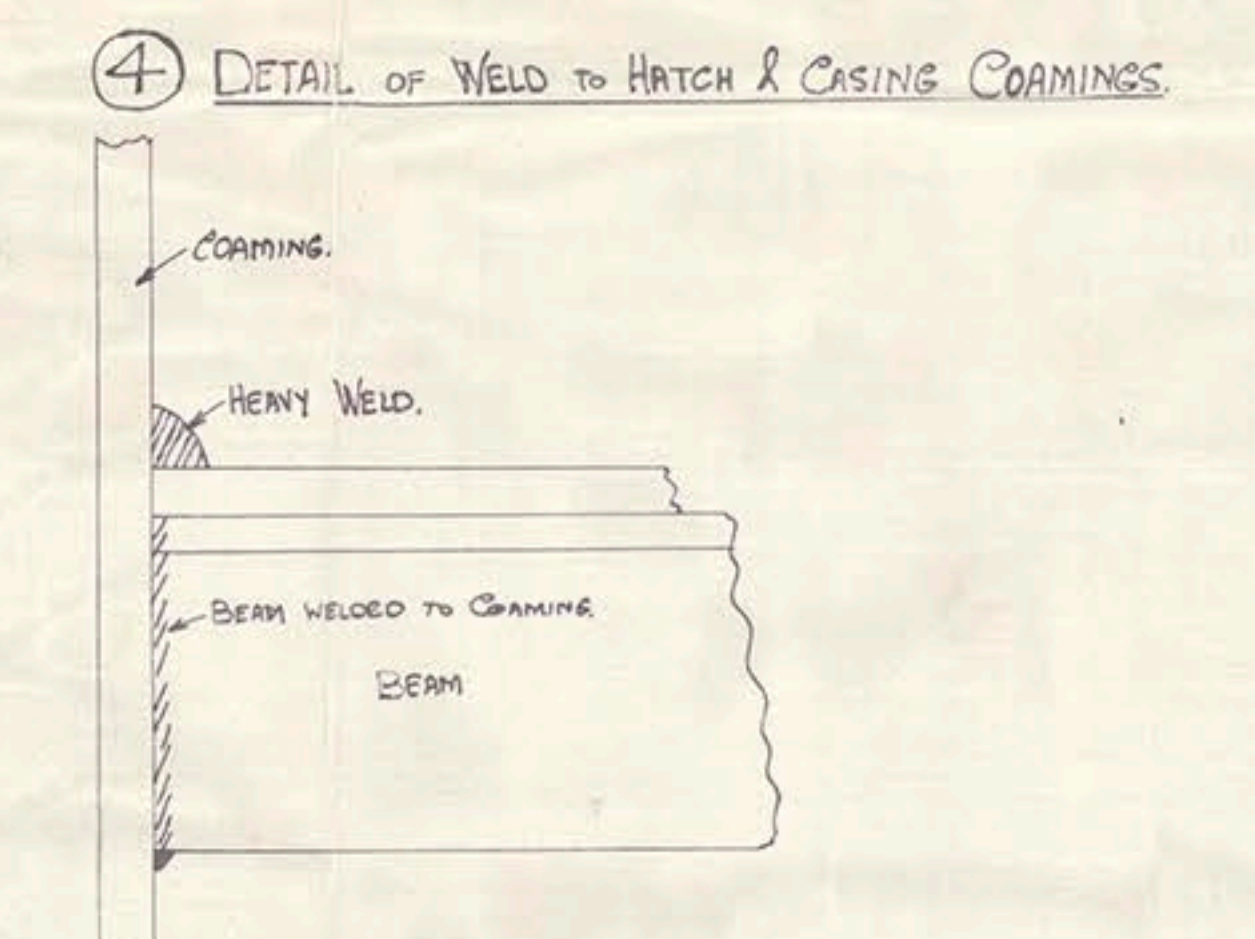
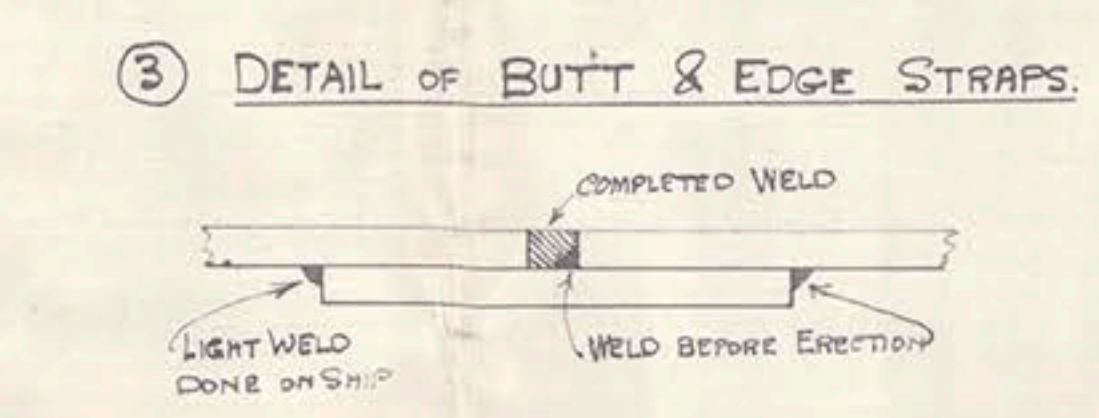
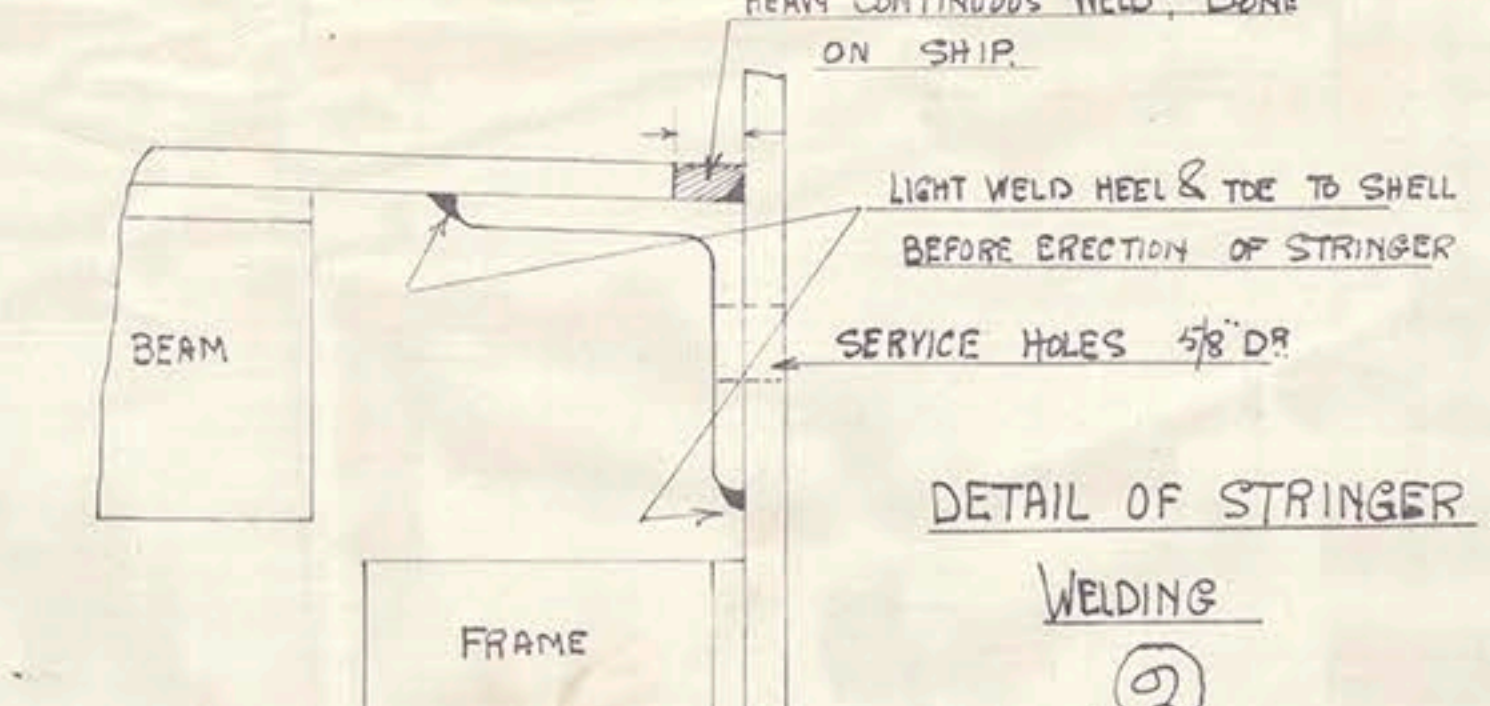
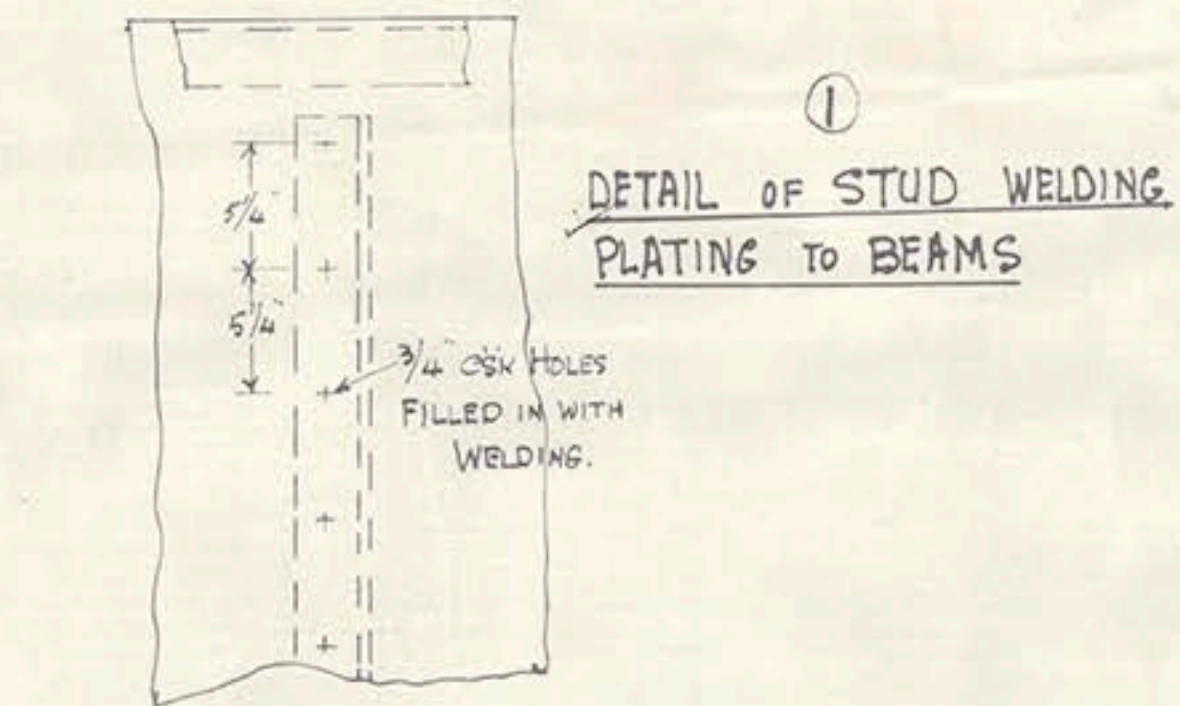
NOTE - SEE ERECTION NOTES ALONGSIDE PARTS CONCERNED.
ORDER OF ERECTION SHOWN THUS ①
ALL STRAPS 5" x 3/8" SEE DETAIL ③

PLATES					ANGLES				
MARK	NO. OFF	LENGTH	BREADTH	REMARKS	MARK	NO. OFF	LENGTH	BREADTH	REMARKS
03	1	18.5	10.0	40°	28	1	18.5	10.0	40°
04	1	18.5	10.0	40°	29	1	18.5	10.0	40°
05	1	18.5	10.0	40°	30	1	18.5	10.0	40°
06	1	18.5	10.0	40°	31	1	18.5	10.0	40°
07	1	18.5	10.0	40°	32	1	18.5	10.0	40°
08	1	18.5	10.0	40°	33	1	18.5	10.0	40°
09	1	18.5	10.0	40°	34	1	18.5	10.0	40°
10	1	18.5	10.0	40°	35	1	18.5	10.0	40°
11	1	18.5	10.0	40°	36	1	18.5	10.0	40°
12	1	18.5	10.0	40°	37	1	18.5	10.0	40°
13	1	18.5	10.0	40°	38	1	18.5	10.0	40°
14	1	18.5	10.0	40°	39	1	18.5	10.0	40°
15	1	18.5	10.0	40°	40	1	18.5	10.0	40°
16	1	18.5	10.0	40°	41	1	18.5	10.0	40°
17	1	18.5	10.0	40°	42	1	18.5	10.0	40°

PLATES					ANGLES				
MARK	NO. OFF	LENGTH	BREADTH	REMARKS	MARK	NO. OFF	LENGTH	BREADTH	REMARKS
03	1	18.5	10.0	40°	28	1	18.5	10.0	40°
04	1	18.5	10.0	40°	29	1	18.5	10.0	40°
05	1	18.5	10.0	40°	30	1	18.5	10.0	40°
06	1	18.5	10.0	40°	31	1	18.5	10.0	40°
07	1	18.5	10.0	40°	32	1	18.5	10.0	40°
08	1	18.5	10.0	40°	33	1	18.5	10.0	40°
09	1	18.5	10.0	40°	34	1	18.5	10.0	40°
10	1	18.5	10.0	40°	35	1	18.5	10.0	40°
11	1	18.5	10.0	40°	36	1	18.5	10.0	40°
12	1	18.5	10.0	40°	37	1	18.5	10.0	40°
13	1	18.5	10.0	40°	38	1	18.5	10.0	40°
14	1	18.5	10.0	40°	39	1	18.5	10.0	40°
15	1	18.5	10.0	40°	40	1	18.5	10.0	40°
16	1	18.5	10.0	40°	41	1	18.5	10.0	40°
17	1	18.5	10.0	40°	42	1	18.5	10.0	40°

WELDING NOTES
BEAM KNEES - SEE FRAMING PLAN No 7/882 & WELDING DETAILS No 1/882.
BEAMS TO DE PLATING
✓ WHERE WELDED ON THE GROUND - INTERMITTENT WELDING HEEL & TOE STAGGERED 2 WELD 9" OR TO 10" SHIP - STUD WELDING. SEE DETAIL ①
STRINGER BAR - WELDED CONTINUOUSLY BY LIGHT WELD HEEL & TOE TO SHELL PLATING BEFORE ERECTION OF STRINGER PLATE.
TO STRINGER PLATE LIGHT WELD ON THE 3 HEAVY CONTINUOUS WELD AT HEEL SEE DETAIL ②
SERVICE HOLES IN SHELL PLUGGED & WELDED OVER.
DECK PLATING - LANDINGS AND BUTTS STRAPPED - STRAPS TO BE LIGHTLY WELDED TO PLATING & 1/2" GAP ON TOP COMPLETELY FILLED IN WITH WELDING SEE DETAIL ③

WELDING NOTES CONTD
HATCH COAMINGS & CASINGS
IN WAY OF OPENING CONTINUOUS HEAVY WELD ON TOP ELSEWHERE - CONTINUOUS LIGHT WELD ON BOTH SIDES SEE DETAIL ④
DOUBLES - CONTINUOUS HEAVY WELD ALL ROUND & STUDS SEE DETAIL ⑤
DIAPHRAGM PLATES, WEBB ETC IN WAY OF BREAK, DOUBLE HEAVY CONTINUOUS WELDS.
OTHER BRACKETS - CONTINUOUSLY WELDED ALL ROUND



③ LAST TUNED BEAMS, KNEES, FRAME, & DECK PLATING N/2 WITH STRAPS IN EACH RAKE WELDED TOGETHER ON GROUND & ERECTED COMPLETE. N/2 DECK PLATE TO BE ERECTED WHEN ALL WELDING OF CHITS & SHELL & CASING IS COMPLETED. WELDING OF CHITS & SHELL & CASING TO BE WELDED ON GROUND & ERECTED COMPLETE. STRAP WELDED TO BEAMS BETWEEN MARKS.

BEAM N/2, 3/8" TO BE WELDED TO BEAMS & KNEES, CHITS ETC. ON THE GROUND & ERECTED COMPLETE. DECK PLATING IN WAY OF BEAMS & KNEES TO BE WELDED ON GROUND & ERECTED COMPLETE. STRAP WELDED TO BEAMS BETWEEN MARKS.

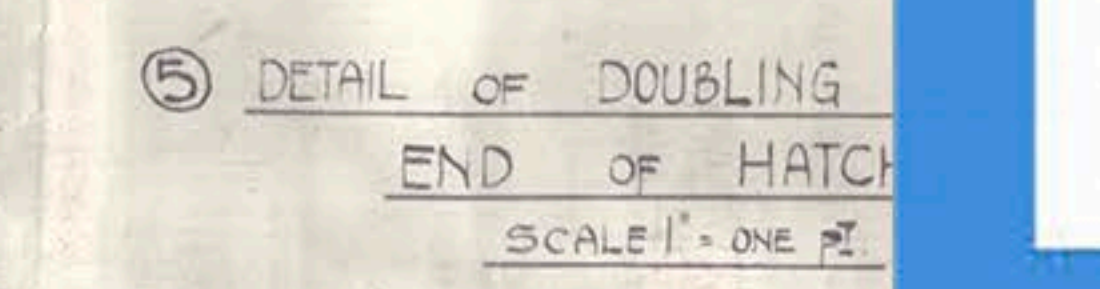
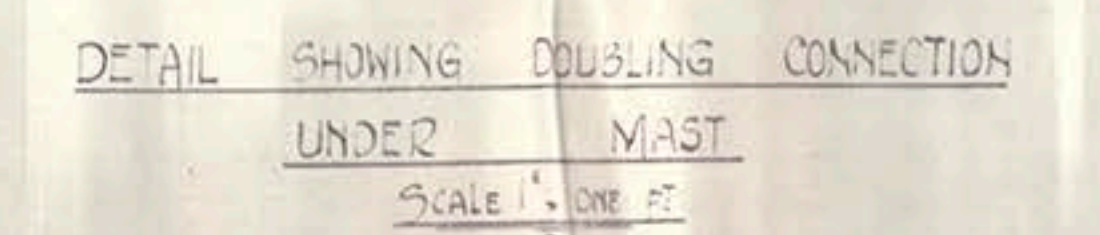
DECK PLATES N/2, 3/8" TO BE WELDED TO BEAMS & KNEES, CHITS ETC. ON THE GROUND & ERECTED COMPLETE. DECK PLATING IN WAY OF BEAMS & KNEES TO BE WELDED ON GROUND & ERECTED COMPLETE. STRAP WELDED TO BEAMS BETWEEN MARKS.

STRINGER PLATE N/2, 3/8" TO BE WELDED TO BEAMS & KNEES, CHITS ETC. ON THE GROUND & ERECTED COMPLETE. STRINGER PLATING IN WAY OF BEAMS & KNEES TO BE WELDED ON GROUND & ERECTED COMPLETE. STRAP WELDED TO BEAMS BETWEEN MARKS.

STRINGER PLATE N/2, 3/8" TO BE WELDED TO BEAMS & KNEES, CHITS ETC. ON THE GROUND & ERECTED COMPLETE. STRINGER PLATING IN WAY OF BEAMS & KNEES TO BE WELDED ON GROUND & ERECTED COMPLETE. STRAP WELDED TO BEAMS BETWEEN MARKS.

STRINGER PLATE N/2, 3/8" TO BE WELDED TO BEAMS & KNEES, CHITS ETC. ON THE GROUND & ERECTED COMPLETE. STRINGER PLATING IN WAY OF BEAMS & KNEES TO BE WELDED ON GROUND & ERECTED COMPLETE. STRAP WELDED TO BEAMS BETWEEN MARKS.

STRINGER PLATE N/2, 3/8" TO BE WELDED TO BEAMS & KNEES, CHITS ETC. ON THE GROUND & ERECTED COMPLETE. STRINGER PLATING IN WAY OF BEAMS & KNEES TO BE WELDED ON GROUND & ERECTED COMPLETE. STRAP WELDED TO BEAMS BETWEEN MARKS.



No 882 C. Laird & Co

Quarter Beek Plating
Plan

S.S. "bedros."

register
on



© 2018

Lloyd's Register
Foundation