

Lloyd's Stamp
5-1-21
Approved by Lloyd's
CF 4/1/21

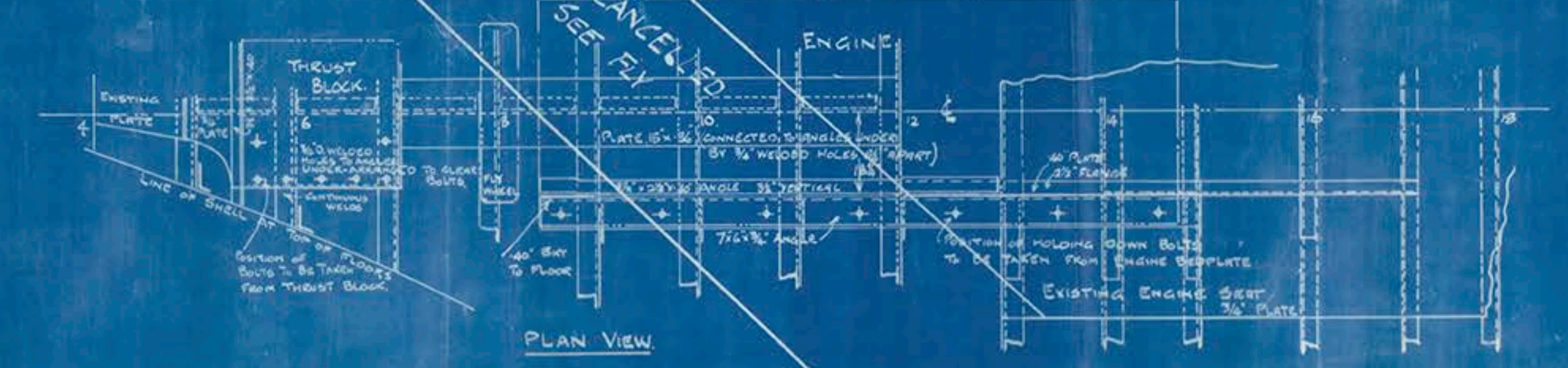
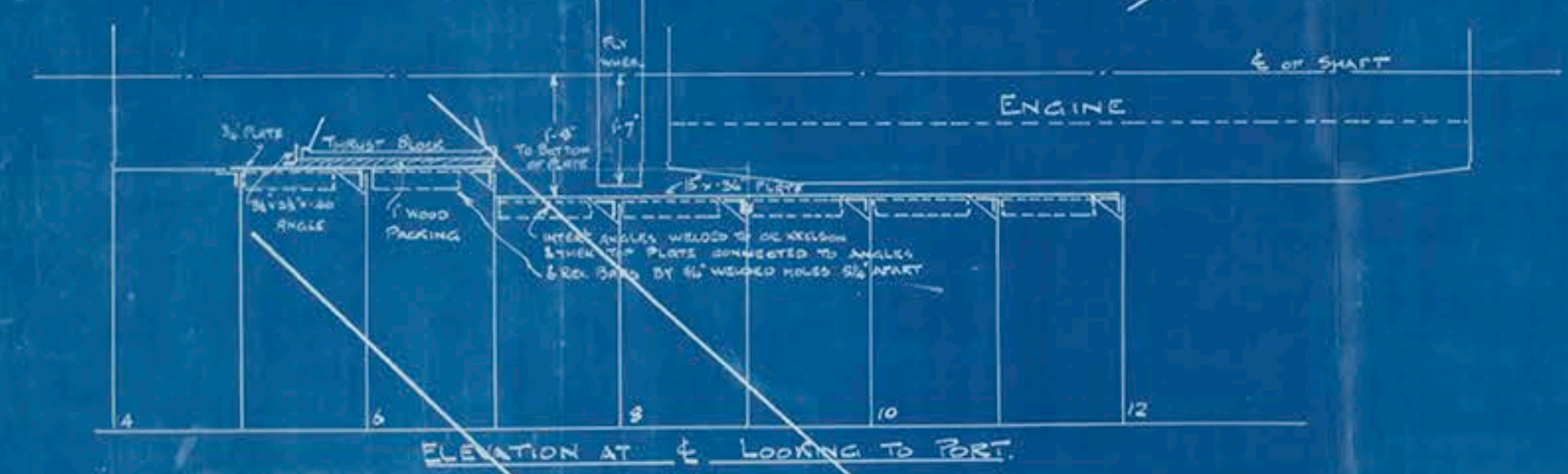
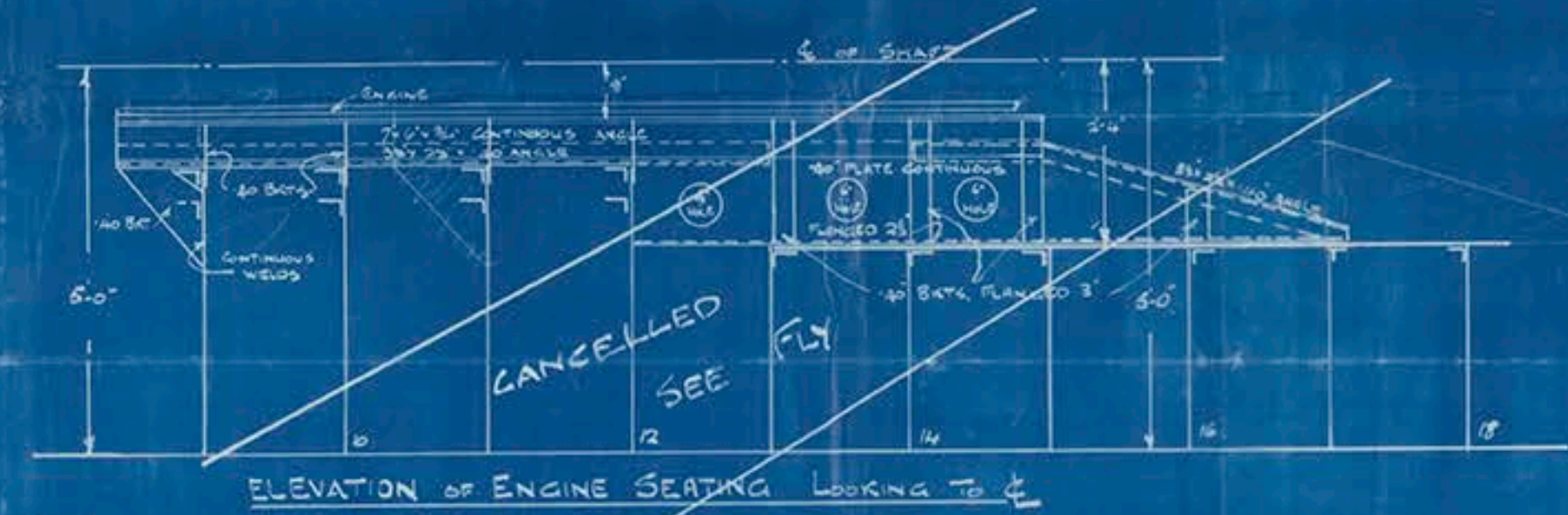
MOTOR SHIP "FULLAGAR".

PLAN OF ENGINE & DONKEY BOILER SEATING. (MODIFICATIONS DUE TO FITTING BEARDMORE ENGINE).

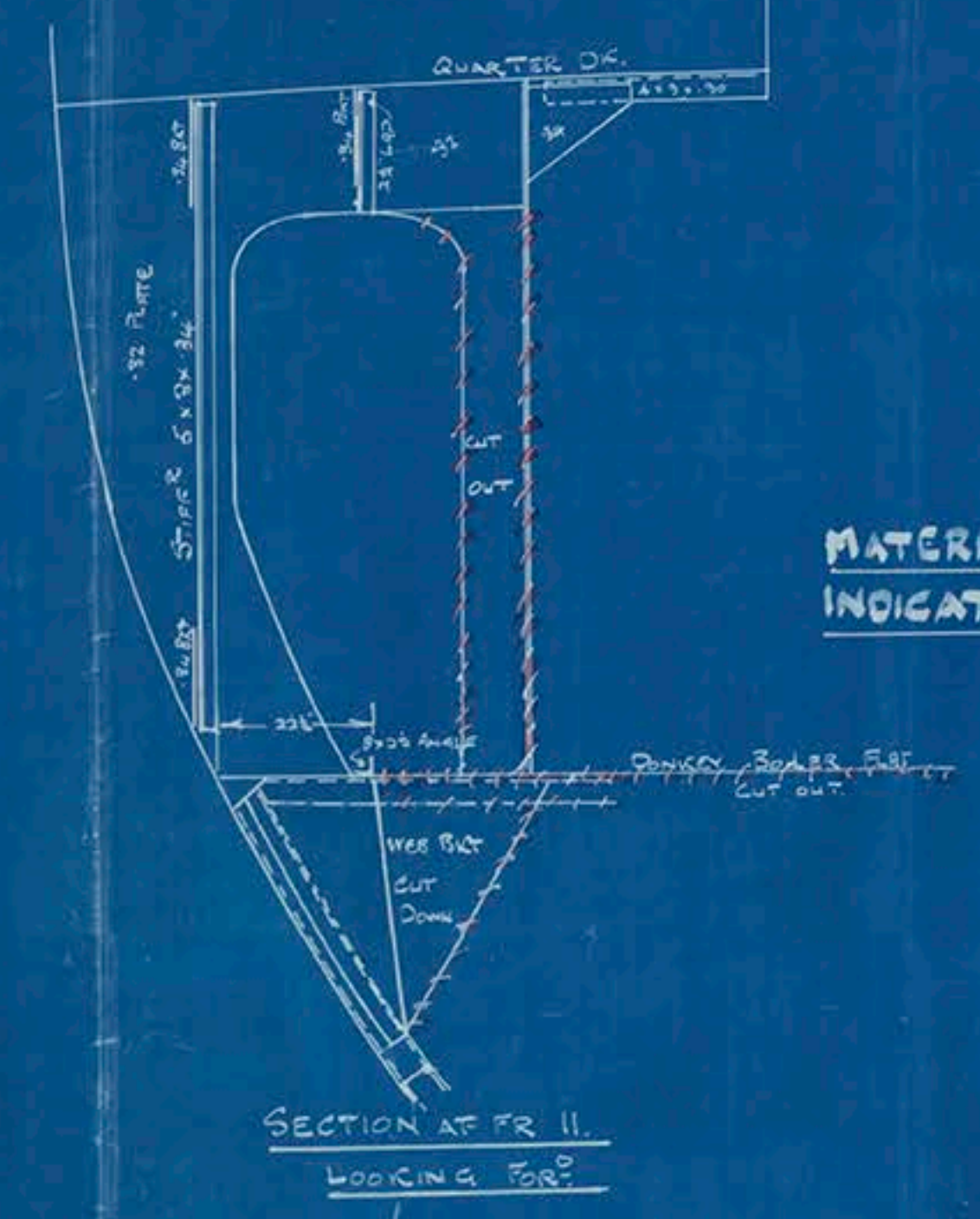
SCALE 1/2" = ONE FOOT.

ARRANGED FOR WELDING.

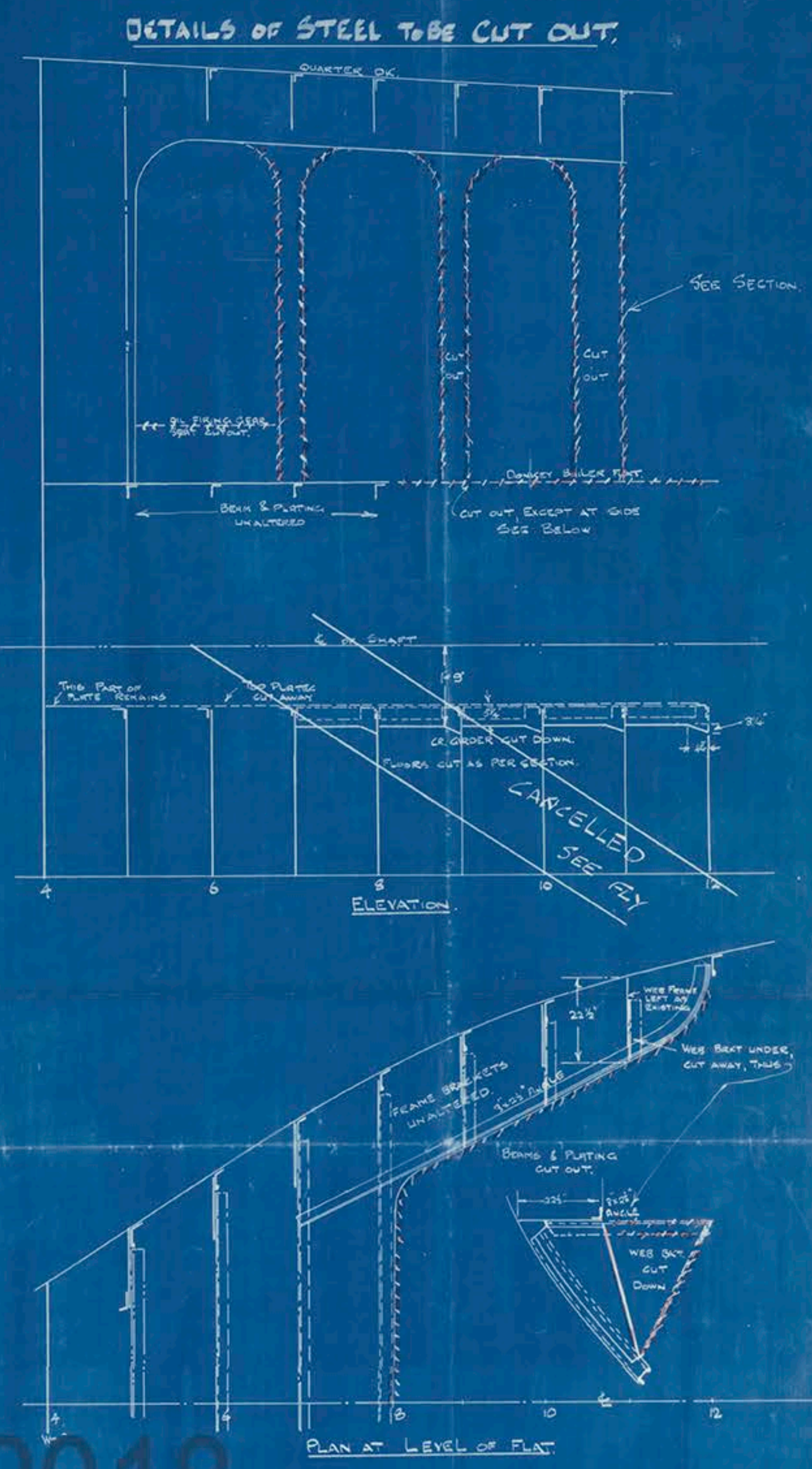
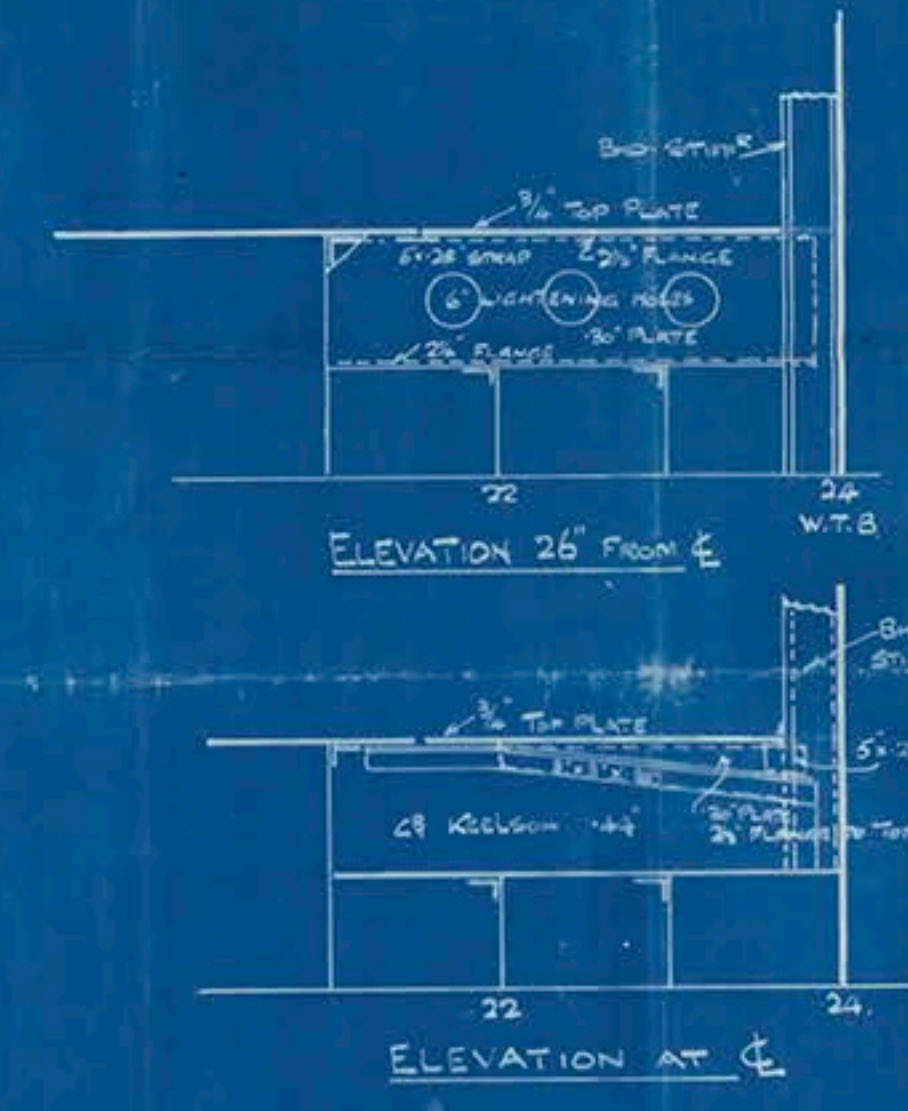
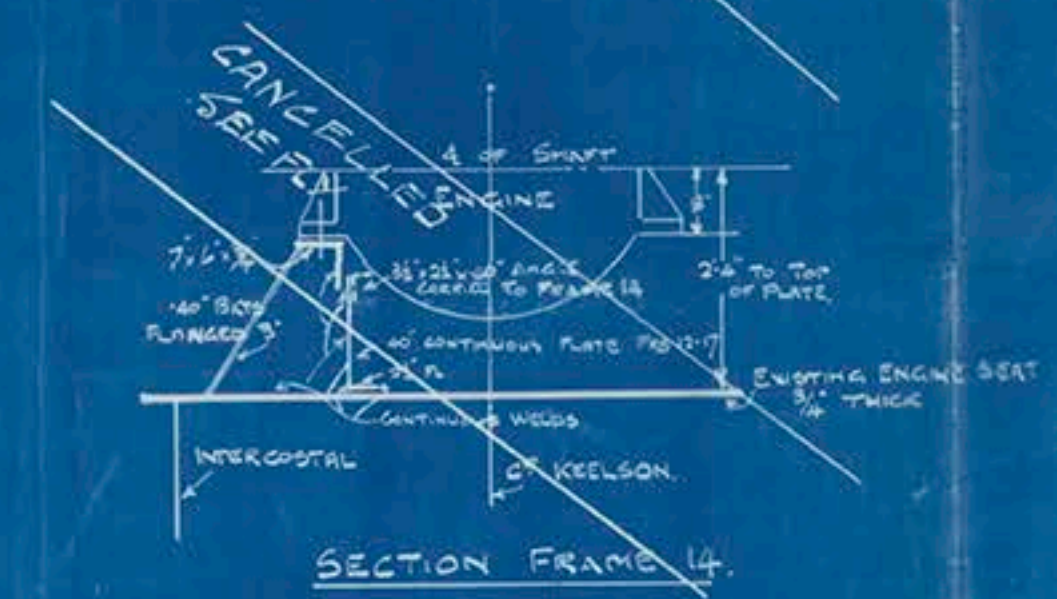
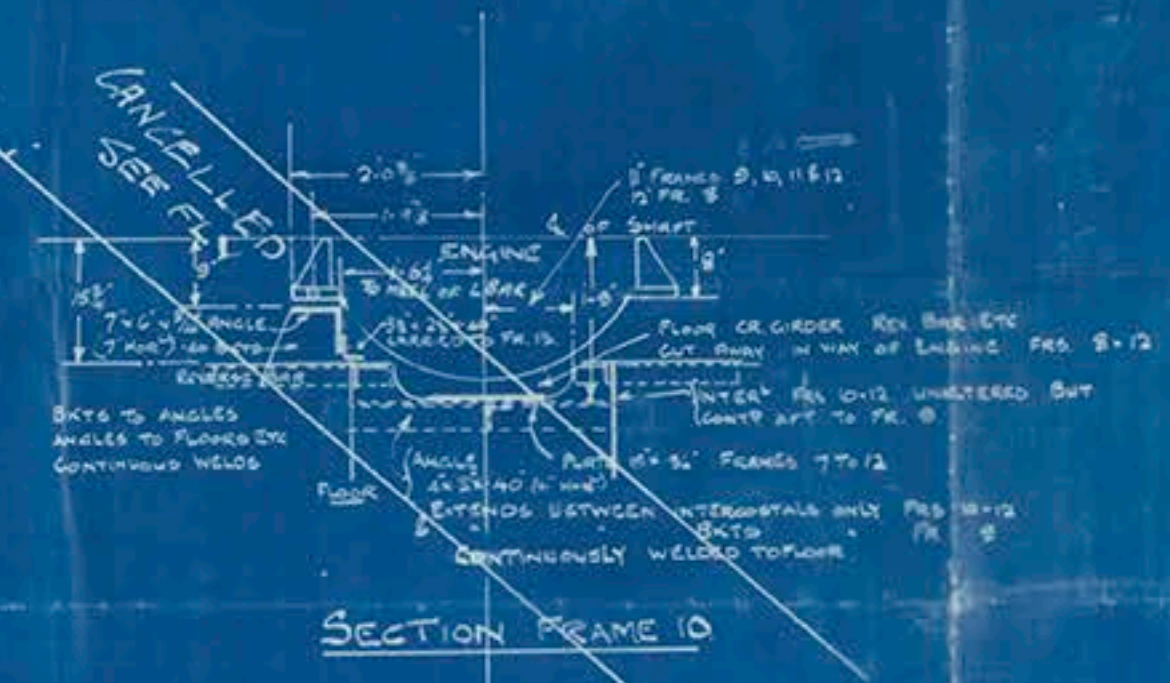
NOTE - WHERE MATERIAL IS BURNT OUT, EDGES
MUST BE CHIPPED IF ANYTHING IS TO BE
WELDED TO THEM.



SEE "FLY" FOR RE-ARRANGED SEATS.
(ENGINE MOVED FORWARD 3'-7").



MATERIAL TO BE CUT OUT
INDICATED THUS -



© 2018

Lloyd's Register
Foundation



Lloyd's Register
Foundation

M. P. Fullagar.

Plan of Engine Docks
Barnes Ferry,

Register

on

S. S. "Fullagar"

LIVERPOOL

Report No.

© 2018
82808



Lloyd's Register
Foundation