

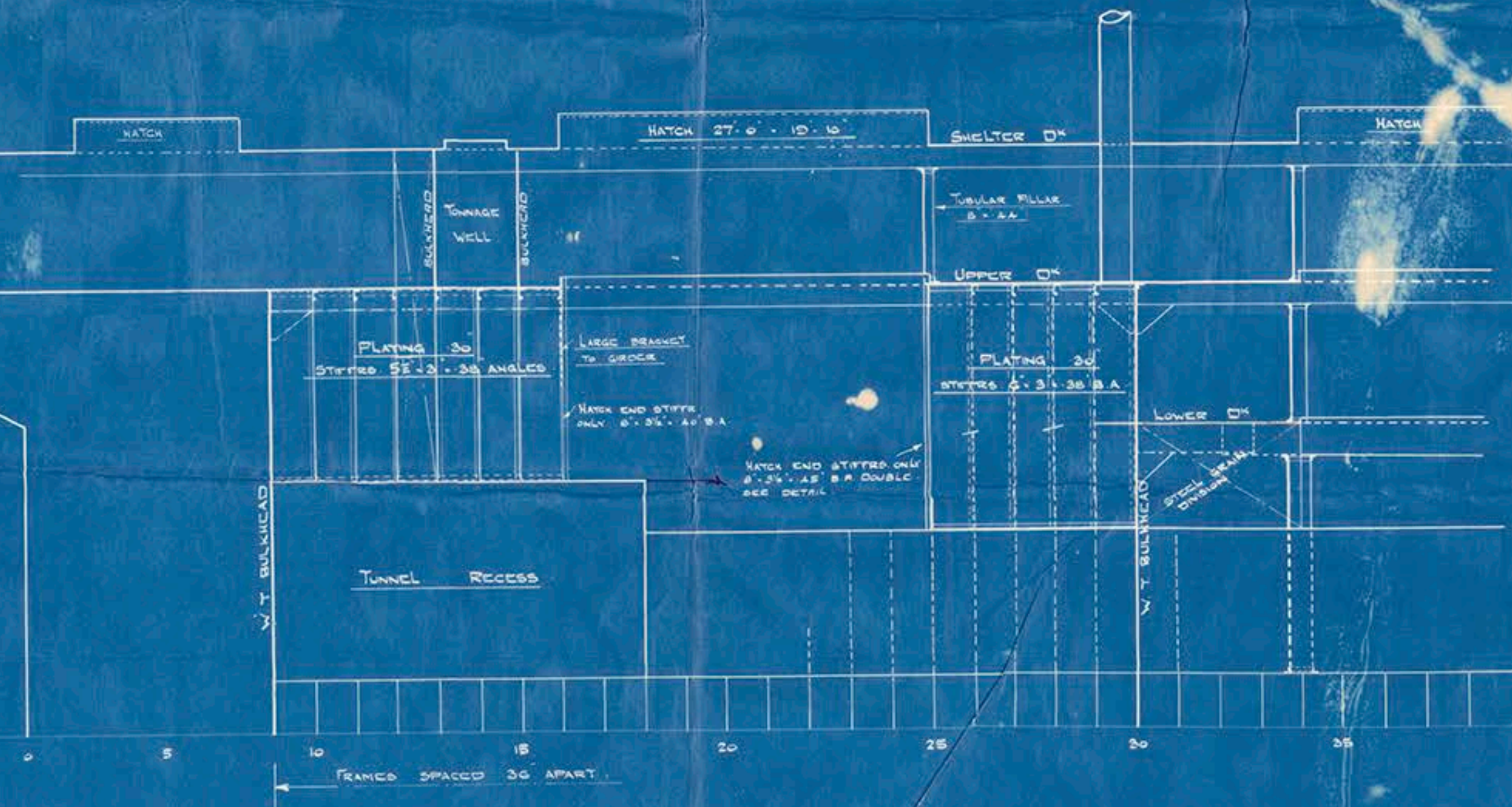
PROPOSED OMISSION OF LOWER DECK

Nº 18.

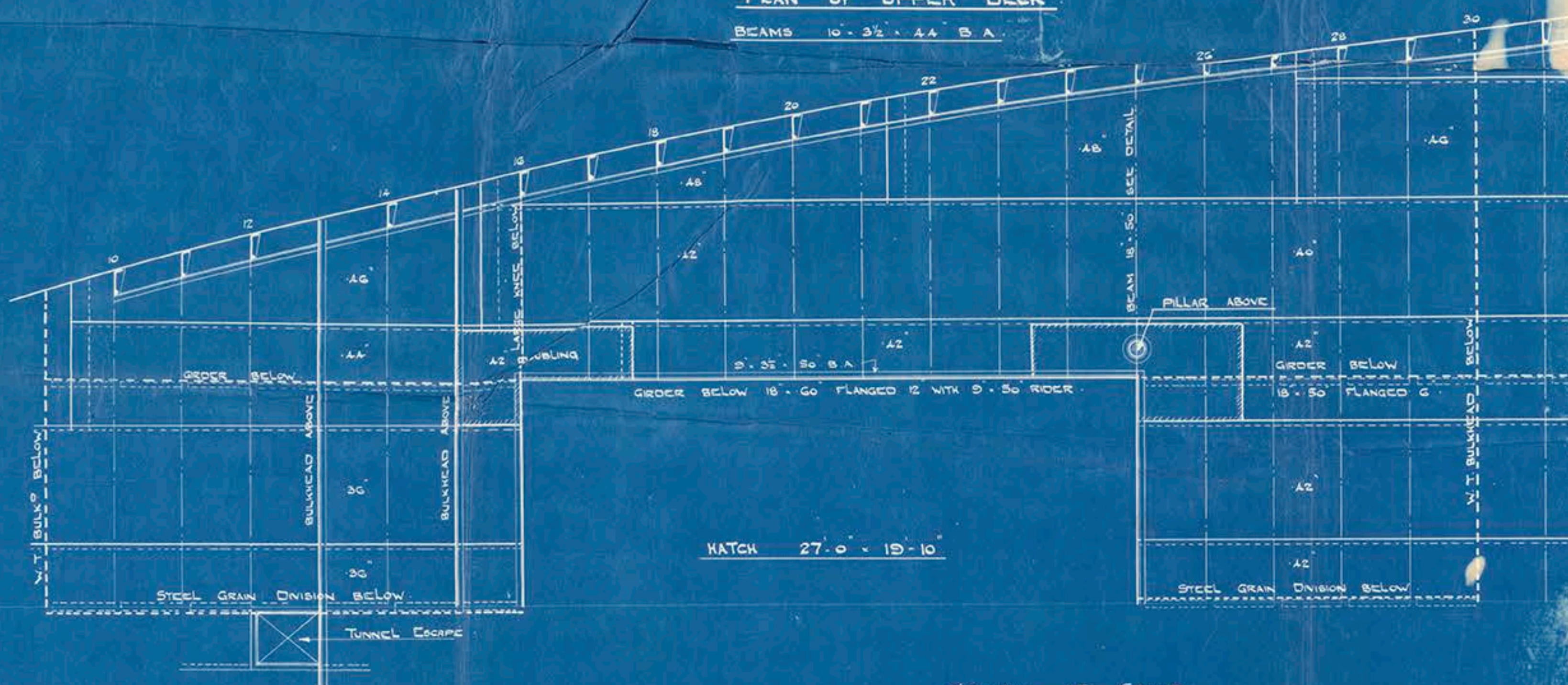
HATCH END BEAM WITH 4 PILLAR AND STEEL GRAIN DIVISION

SCALE 1/8" = ONE FOOT

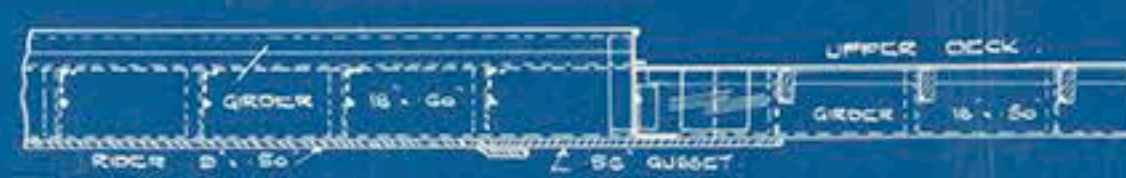
17/2/21



PLAN OF UPPER DECK
BEAMS 10" x 3 1/2" x 44' B.A.



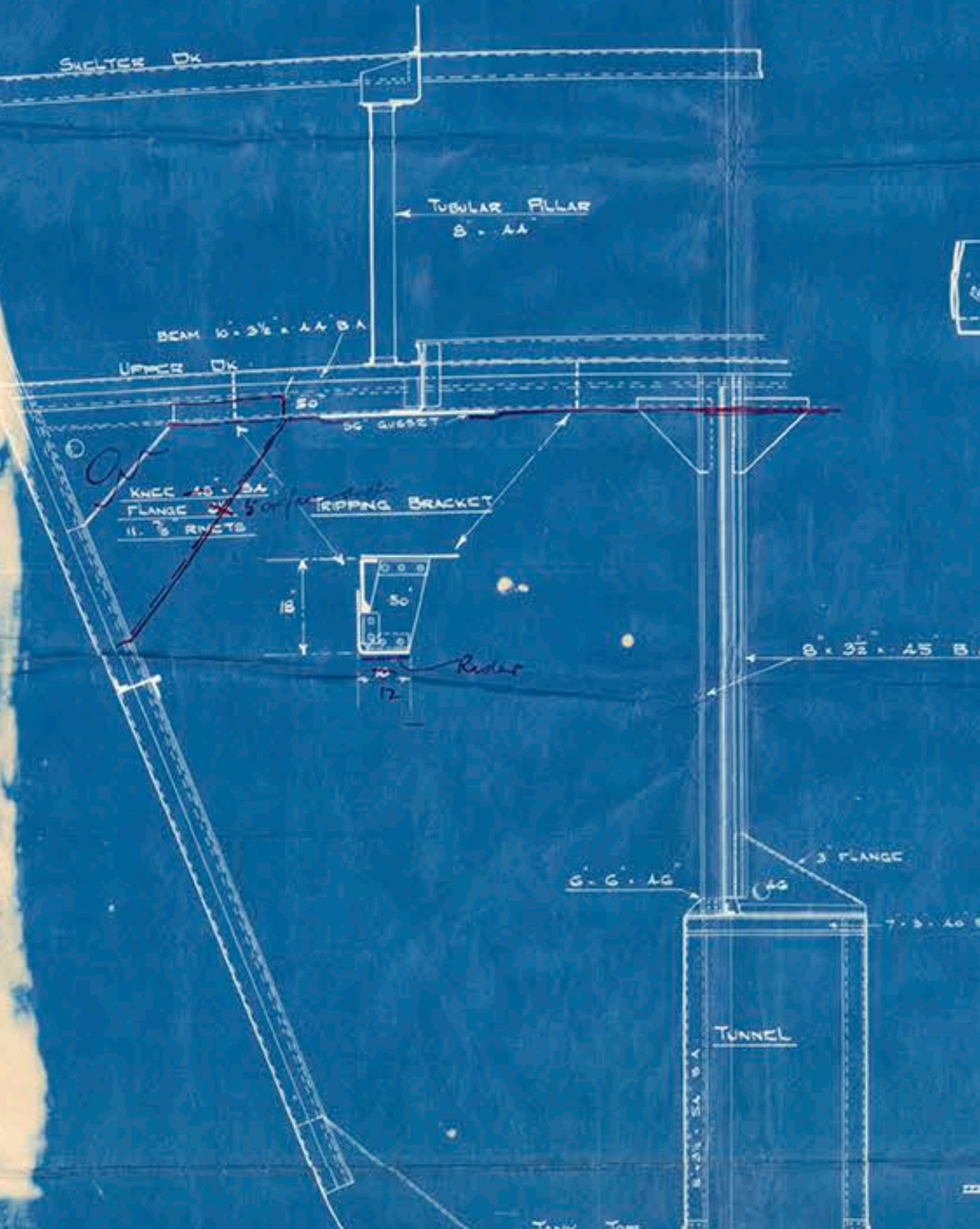
ELEVATION OF GIRDER



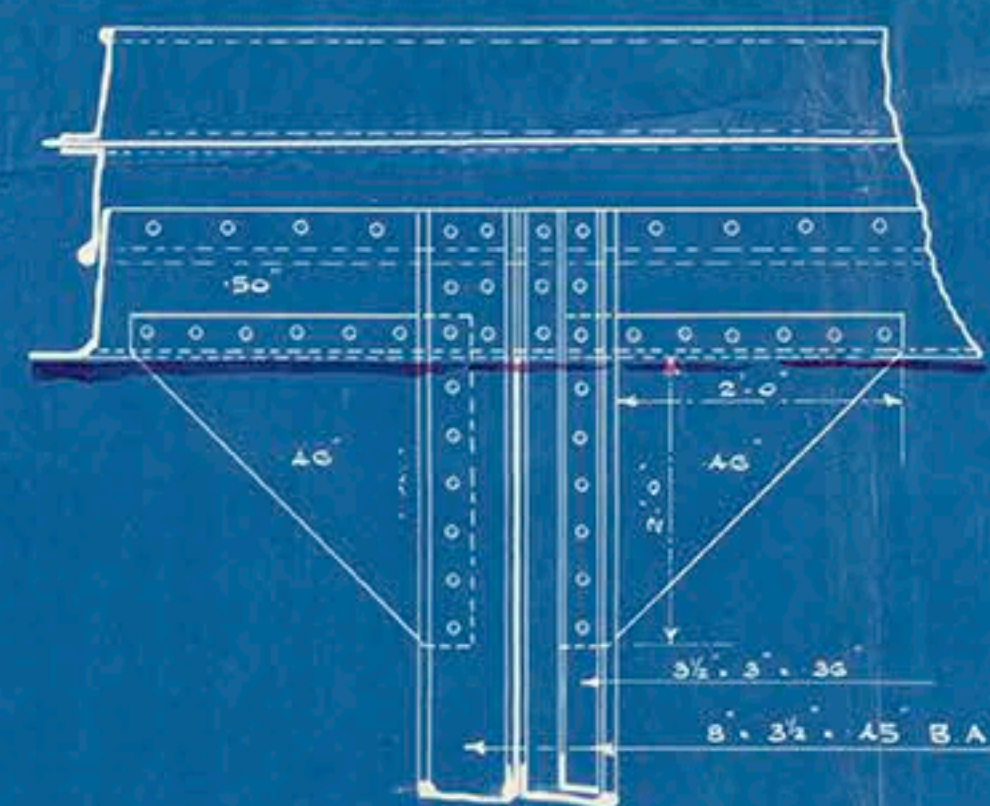
S. 1682

FOR ALTERNATIVE ARRANGEMENT FOR SUPPORTING
DECK SEE PLAN Nº S. 1679.
ALSO SEE ABOVE PLAN FOR FRAMING ETC.

1/2 SECTION AT 25 FRAME
LOOKING FORWARD

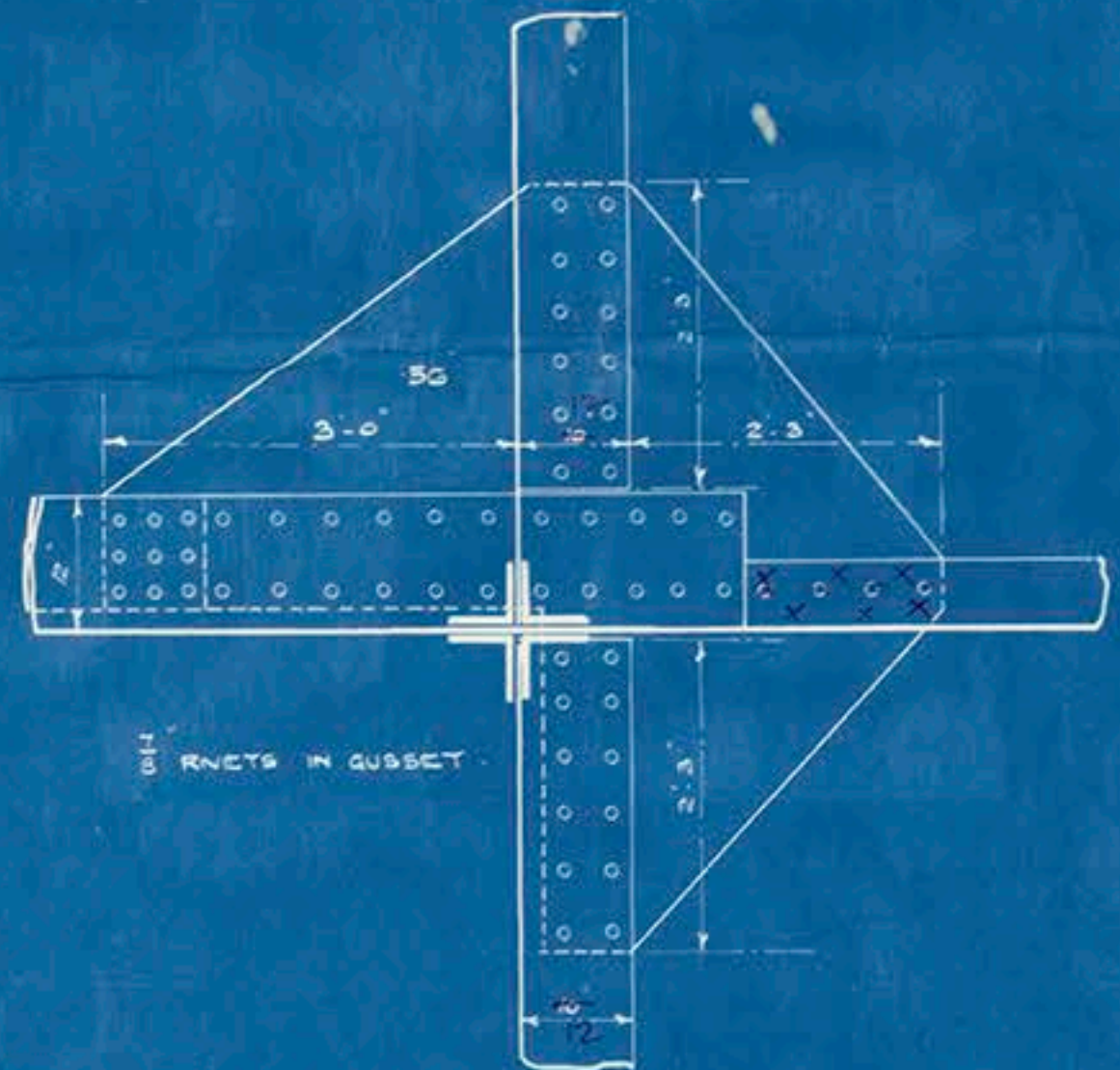


DETAIL OF PILLAR KNEES TO BEAM
SCALE 3/4" = ONE FOOT

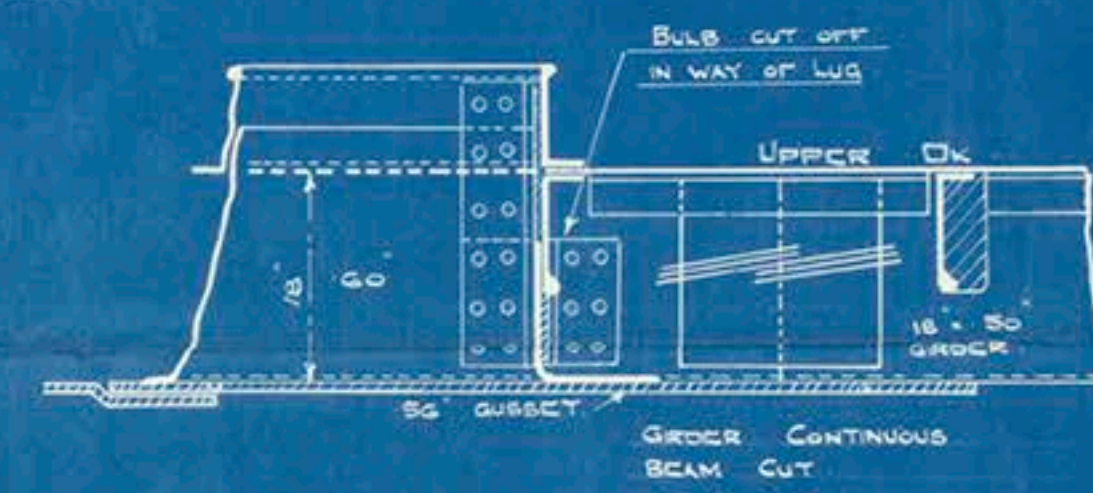


DETAIL OF GUSSET E₁ AT HATCH CORNER
SCALE 3/4" = ONE FOOT

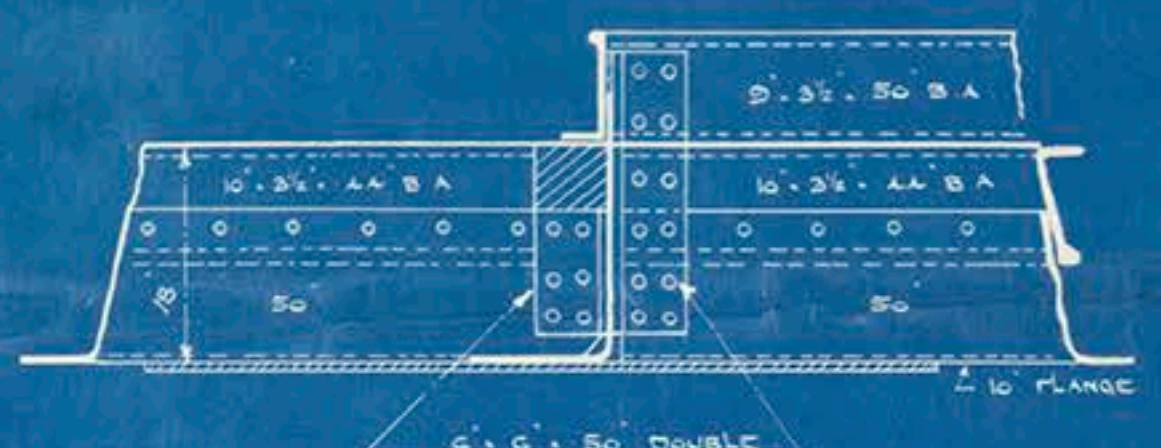
PLAN VIEW



ELEVATION



SECTIONAL ELEVATION
LOOKING FORWARD



Run
17.2.21



Thos. S. Turner. S. B. 602

N^o 18.

Proposed Overhaul of Board
in after. Board

Alternative arrangement
of. Pillaring.

with deep gables. Total and beam

55 " Manchester Regiment"
(No 18)

MIDDLESBRO

Rpt No. 11370.

RETAIN



© 2018

Lloyd's Register
Foundation