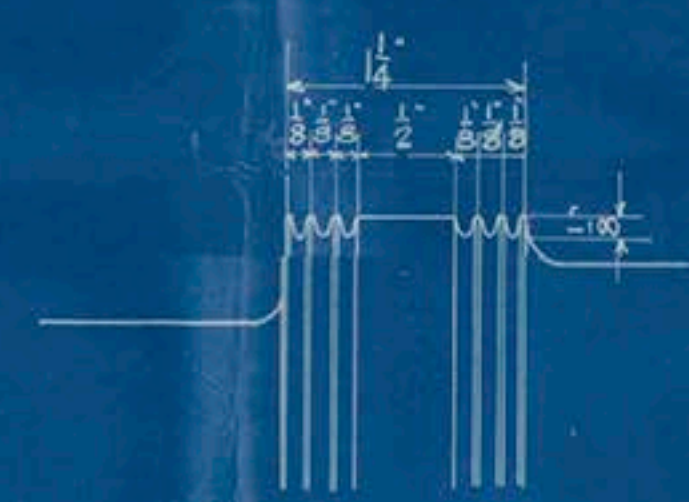
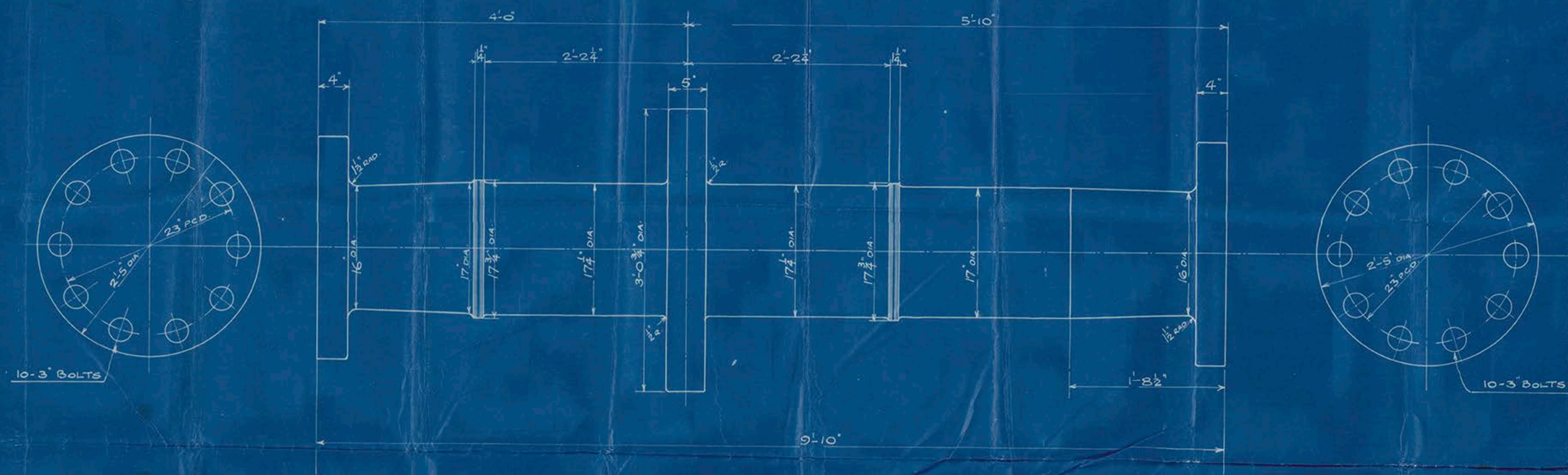
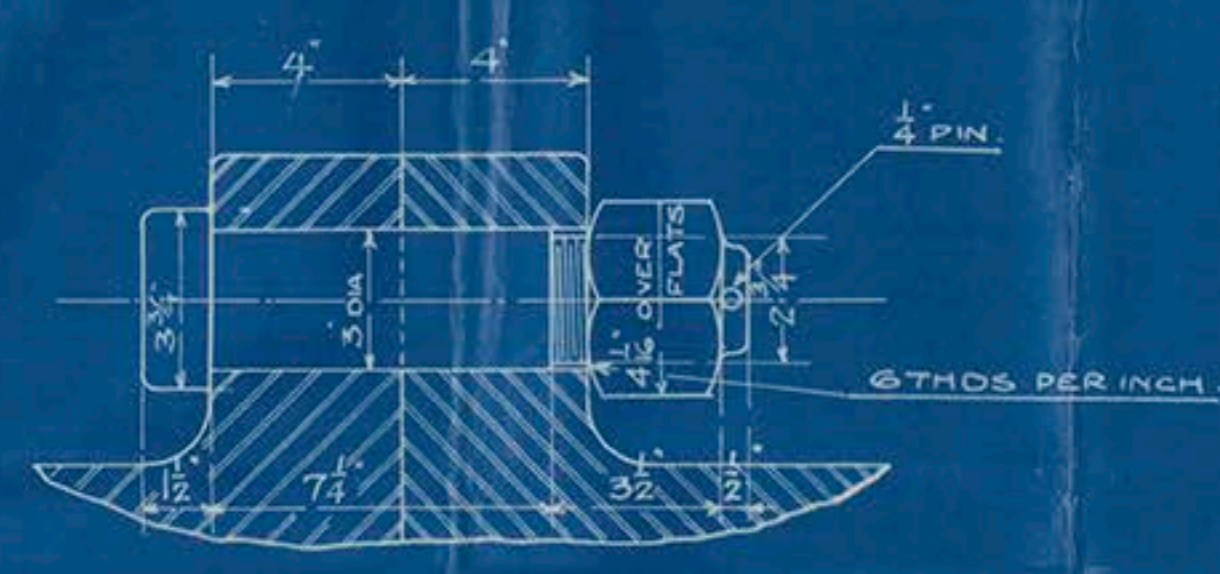


23 3 21



DETAIL OF SERRATIONS.
FOR 8 AFT.



DETAIL OF COUPLING BOLT.
10 OFF. WORKING.
STD. DRG. No. 257 A. DETAIL 9.

MAX. HORSE POWER 5000.
PROPELLER REVS 88

MAX. TENSILE STRENGTH 35 TONS.
MIN 31
ELONGATION 26%.

T. 196-200.

THRUST SHAFT.

SCALE: 1/2" = 1 FOOT.

DRAWING No. 9954.



Lloyd's Register Foundation

Resno
Richardson's W'garth
460 Ltd.

Emp 254

T 196 - 200.
Futness No 18.
Krust Shaft.

9.3.22
London Merchants

T. 196 - Npl Rpt 15959.

Furness S.B. Co's 191
1924

"London Commerce" T. 197. Npl Rpt 16040.

T. 198 "London Importer" "16070.

RETAIN
Please return
for

duplicates

RETAIN

LR-YAF-TG25-P-12



© 2018

Lloyd's Register
Foundation