

TELEGRAPHIC ADDRESS.  
"BEARDMORE, GLASGOW."  
"BEARDMORE, LONDON."

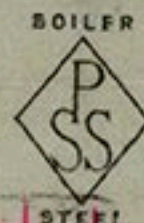
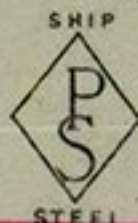
LONDON OFFICE.  
11, QUEEN VICTORIA ST., C.E.

TELEPHONE NO 1356.

Parkhead Forge Rolling Mills.  
and Steel Works,  
Glasgow, 20th May 1898

Messrs McColl & Pollock

Bought of William Beardmore & Co.  
Manufacturers of Steel Plates, Bars & Rivets (Siemens Process), for Ships, Boilers, &c.  
Marine Engine Forgings of all descriptions. Iron Rivets for  
Ships, Boilers, &c. Steel Plates flanged for Boiler Fronts, &c.



20. 202	1	SS 18/10	10. 0 <sup>3</sup> / <sub>8</sub>	4 <sup>3</sup> / <sub>8</sub>	13/16	3 2 16
---------	---	-------------	-----------------------------------	-------------------------------	-------	--------

6 <sup>1</sup>/<sub>4</sub>

G. H. P. & Co.  
34/57/98

Per D. H. 6821 to  
Wreath Quay Eng Wks Sunderland

