

N. E. M. E. CO. (1938) LIMITED, SUNDERLAND.
ENCLOSURE
FOR
Messrs LLOYD'S REGISTER OF SHIPPING &
SUNDERLAND

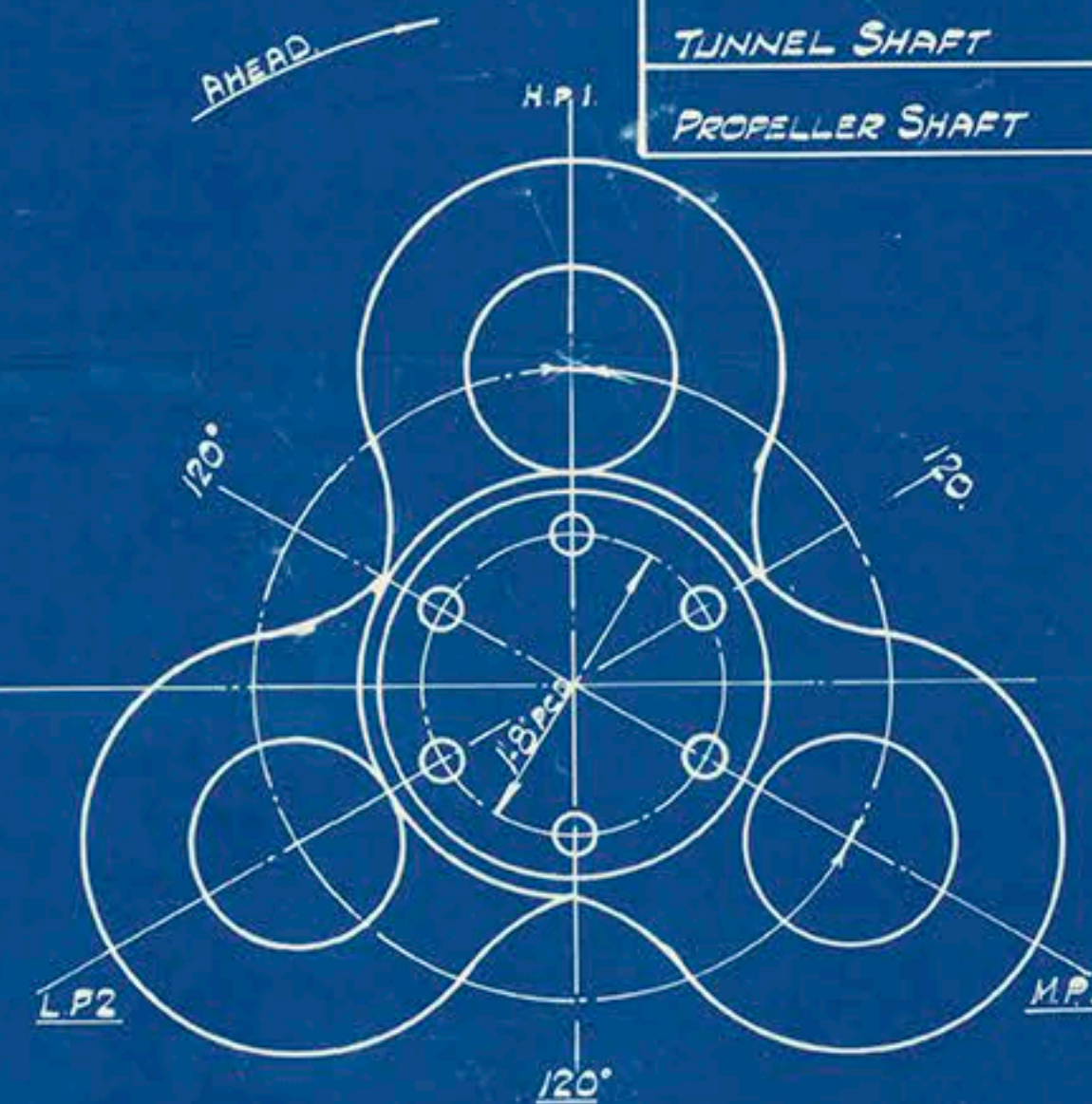
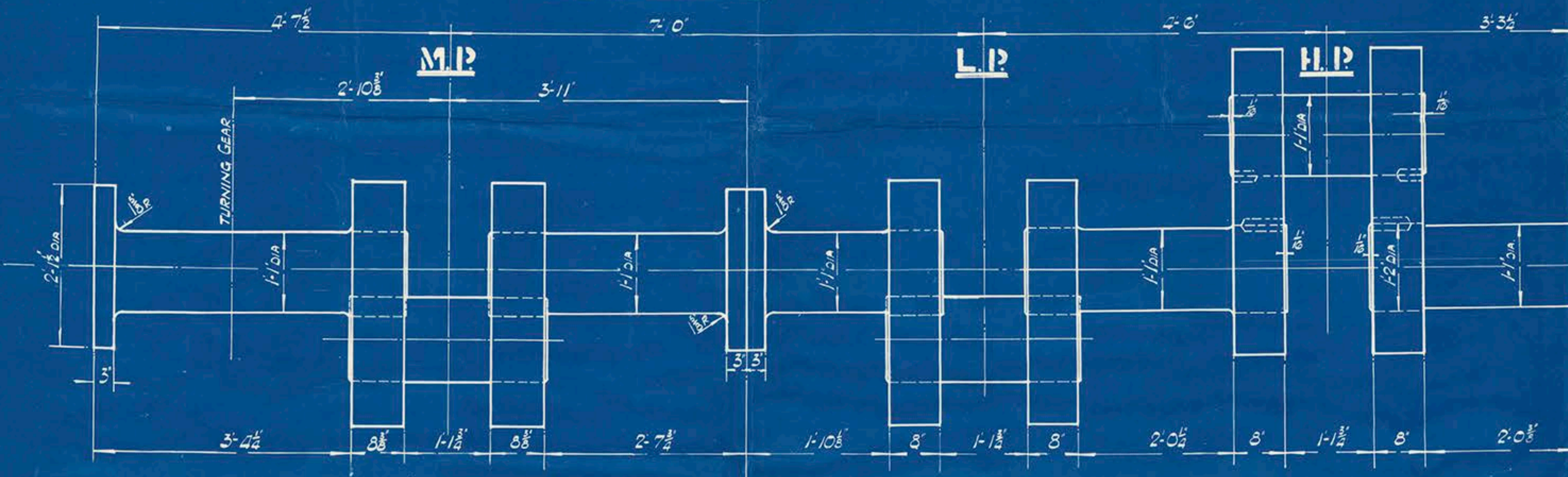


THE NORTH EASTERN MARINE ENGINEERING CO. LTD. SUNDERLAND. SHAFTING. SCHEDULE C.

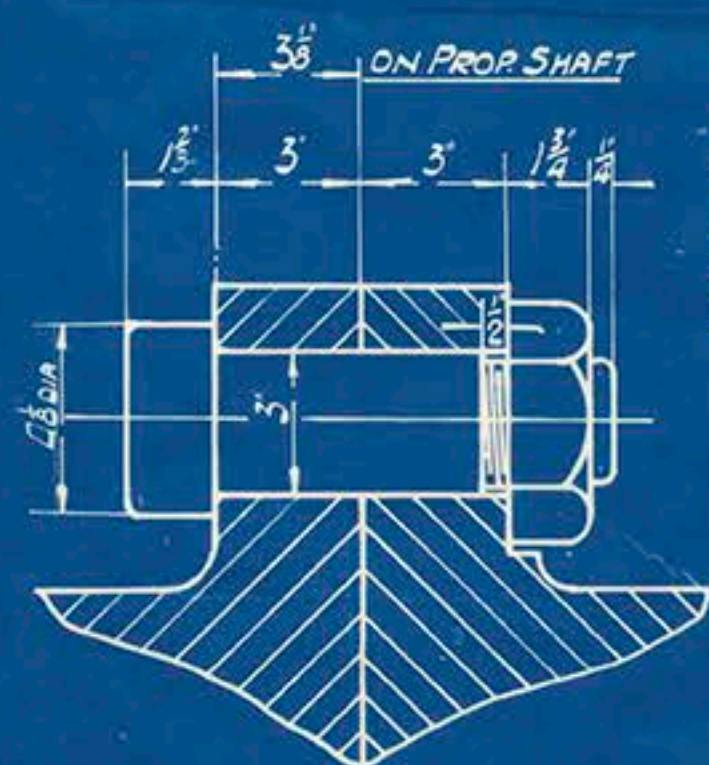
SCALE: 1 INCH TO A FOOT.

ENGINE 23' x 38' x 65' x 220 LBS/DWIP
42 STROKE
DIA OF PROPELLER 18'0"

LLOYD'S RULE SIZES.	
CRANK SHAFT	12'848" DIA.
THRUST SHAFT	12'848" DIA.
TUNNEL SHAFT	12'237" DIA.
PROPELLER SHAFT	13'737" DIA.

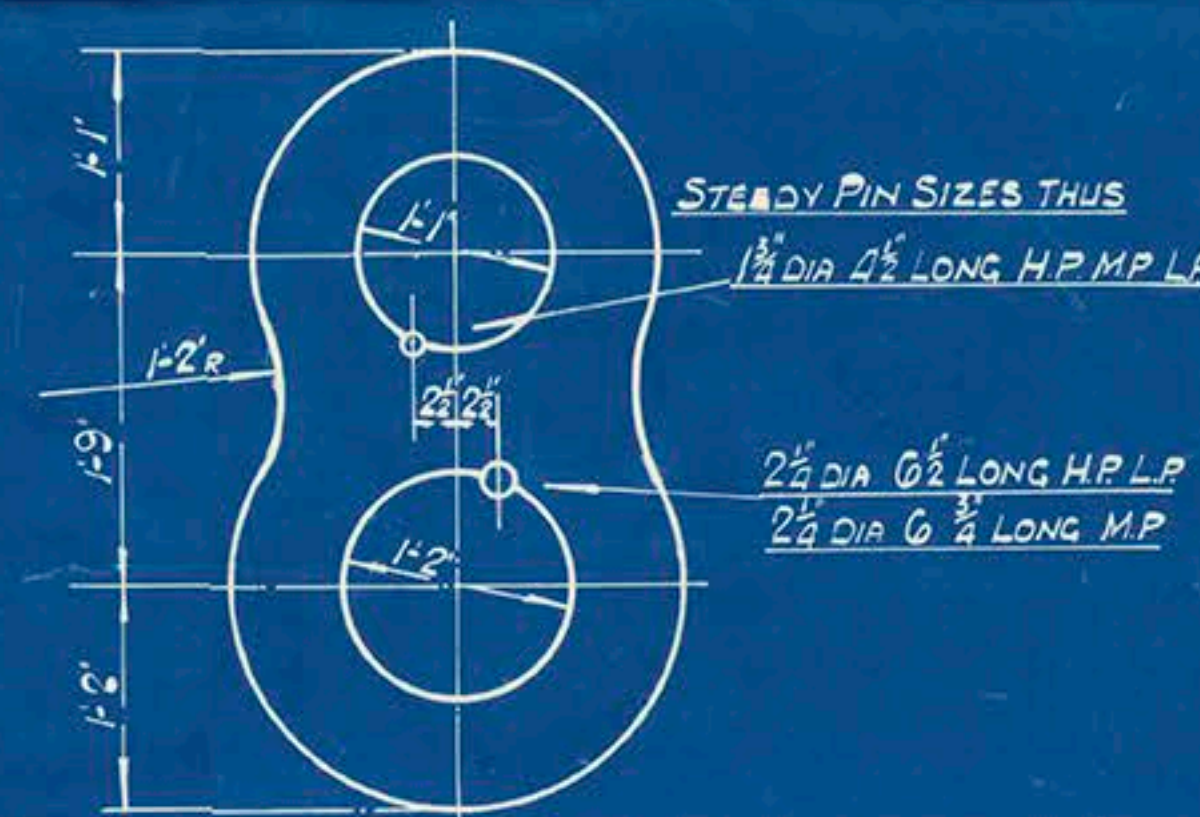
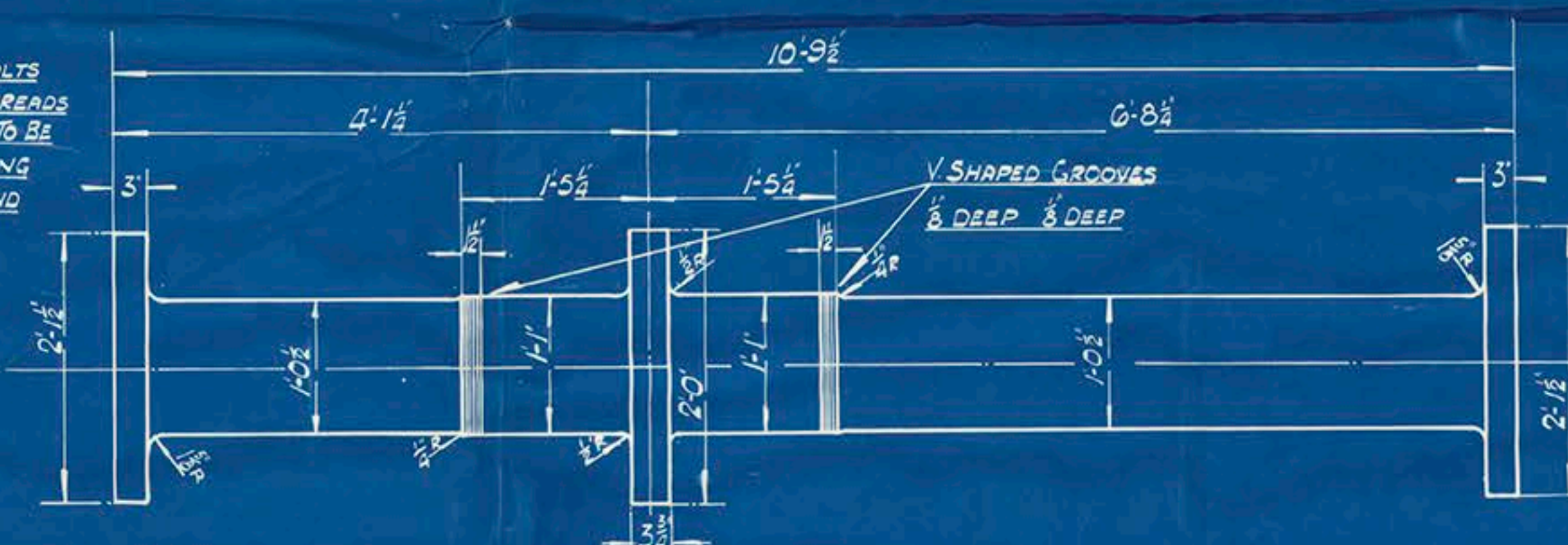


AFTER END LOOKING FORWARD



STEEL COUPLING BOLTS
2 1/2" DIA SCREW & THREADS
A HAMMERING END TO BE
LEFT ON ALL COUPLING
BOLTS AT THREAD END

ALL COUPLING BOLTS DRIVEN IN
FROM AFT SIDE

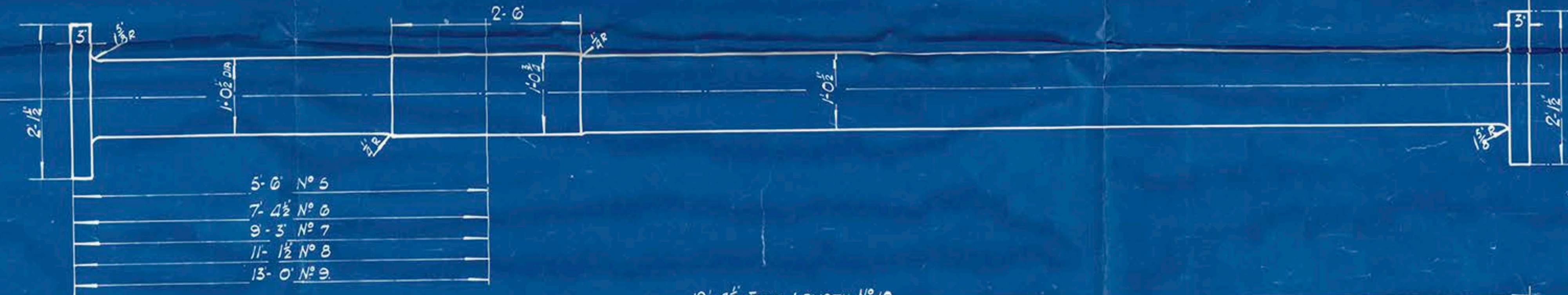
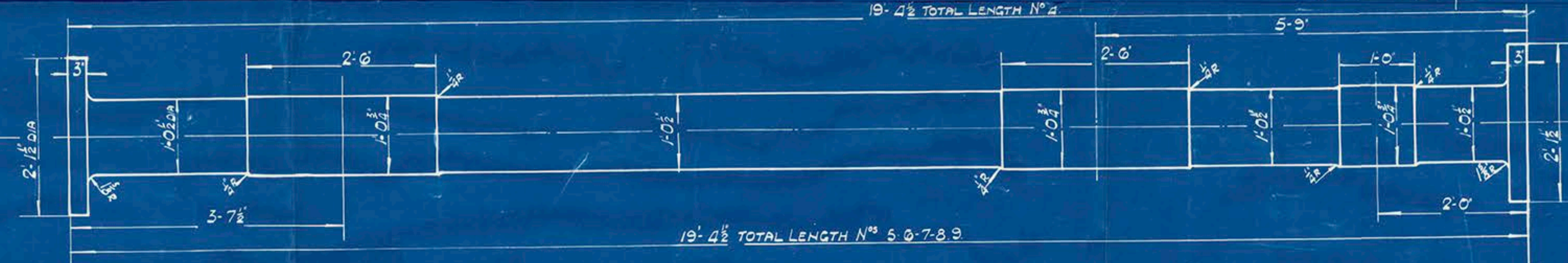
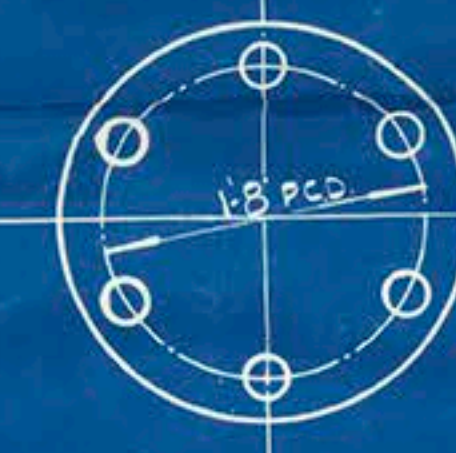


STEADY PIN SIZES THUS

1 1/2" DIA 4 1/2" LONG H.P. M.P. L.P.

2 1/2" DIA 6 1/2" LONG H.P. L.P.

2 1/2" DIA 6 1/2" LONG M.P.



DRAWN BY J.R.B.
TRACED BY M.E.M.
CHECKED BY T.W.O.
12.7.38

DRAWING N° 10422.

CONTRACT	
2955	2955

HOLE TAPPED 1/4" FOR WITHDRAWING
SHAFT & EYEBOLT PROVIDED



CONTRACT 2955

H. S. Maine (ing. Co. Ltd.
c. 2957.

Crantcham & Line Slating

Thistle & Son
SUNDERLAND RPT. NO. 32912

RETAIN



© 2018

Lloyd's Register
Foundation

LR FAF 1830 P. 7