

M.V. EMPIRE CONLEA MIDSHIP SECTION

CLASS 100A - Coasting Service Great Britain
and Ireland and Continent West to Hamburg.

DIMENSIONS:-

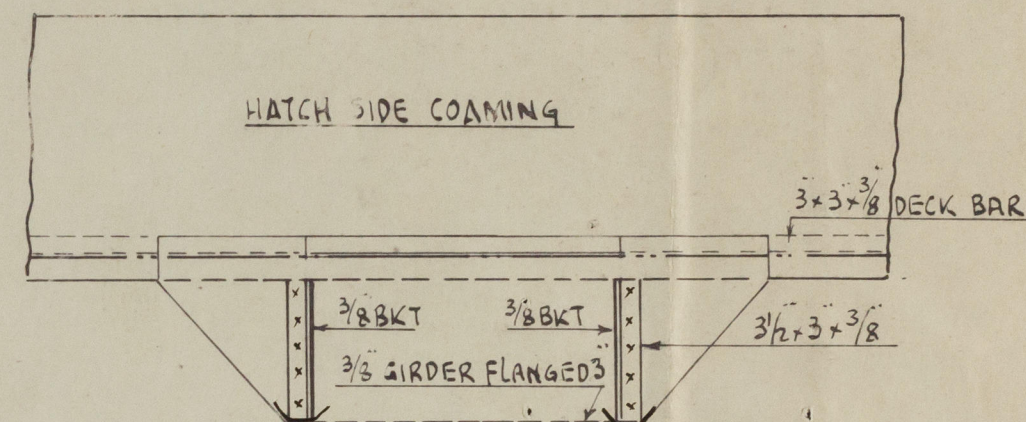
LENGTH O.A.	135'-10"
" B.P.	129'-1"
BREADTH MLD	22'-11 1/4"
DEPTH "	9'-9"

SCALE 1/2" = 1 FOOT.

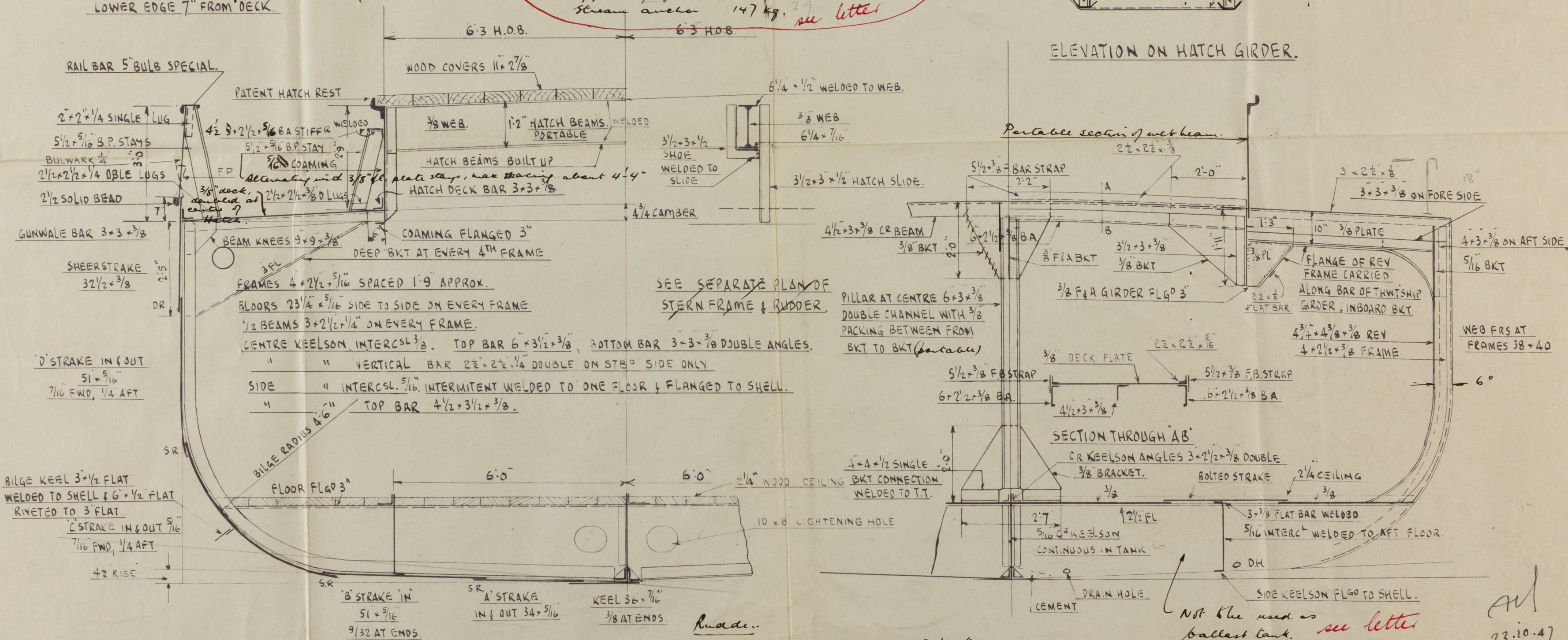
Present equipment:
1st Bow anchor 395 kg. 7 1/4" dia } Sent for Testing.
2nd " 385 " 7 1/4" dia }
Approx 95 fm. cable 1 1/4" dia }
Stream anchor 147 kg. 2 1/2" dia } see letter

3 SCUPPERS EACH SIDE
4" x 3" HIGH.

6 FREEING PORTS EACH SIDE
OF SHIP - 3'9" x 10" OPENING.
LOWER EDGE 7" FROM DECK.



ELEVATION ON HATCH GIRDER.



SECTION THROUGH HOLD
CLEAR OF D.B. TANK.

Rudder:
A x D = 41; Speed under 12 knots.
Rudder head 3 3/8" diam.
Bottom pin 3"
Rudder plate (double) 1/2" thick.

SECTION THROUGH HOLD.
IN WAY OF HATCH GIRDER, DEEP BEAM WEB FRAME
AND TANK

"EMPIRE CONLEA" *
RETAIN

Midship section.

2



© 2020

Lloyd's Register
Foundation

002038-002050-0082



© 2020

Lloyd's Register
Foundation