

"DARTHEMA"

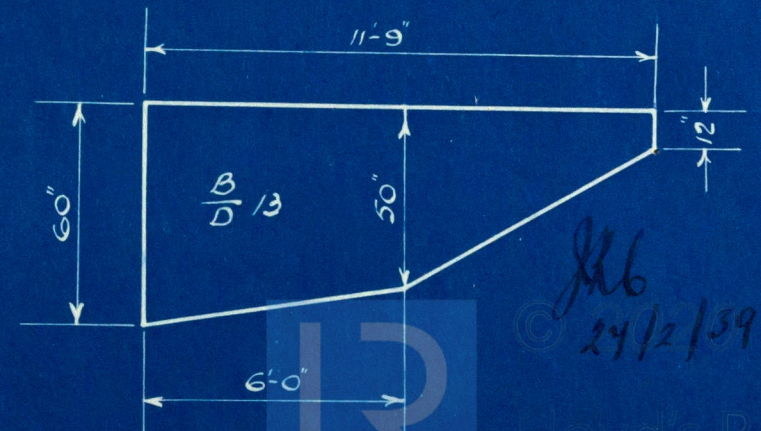
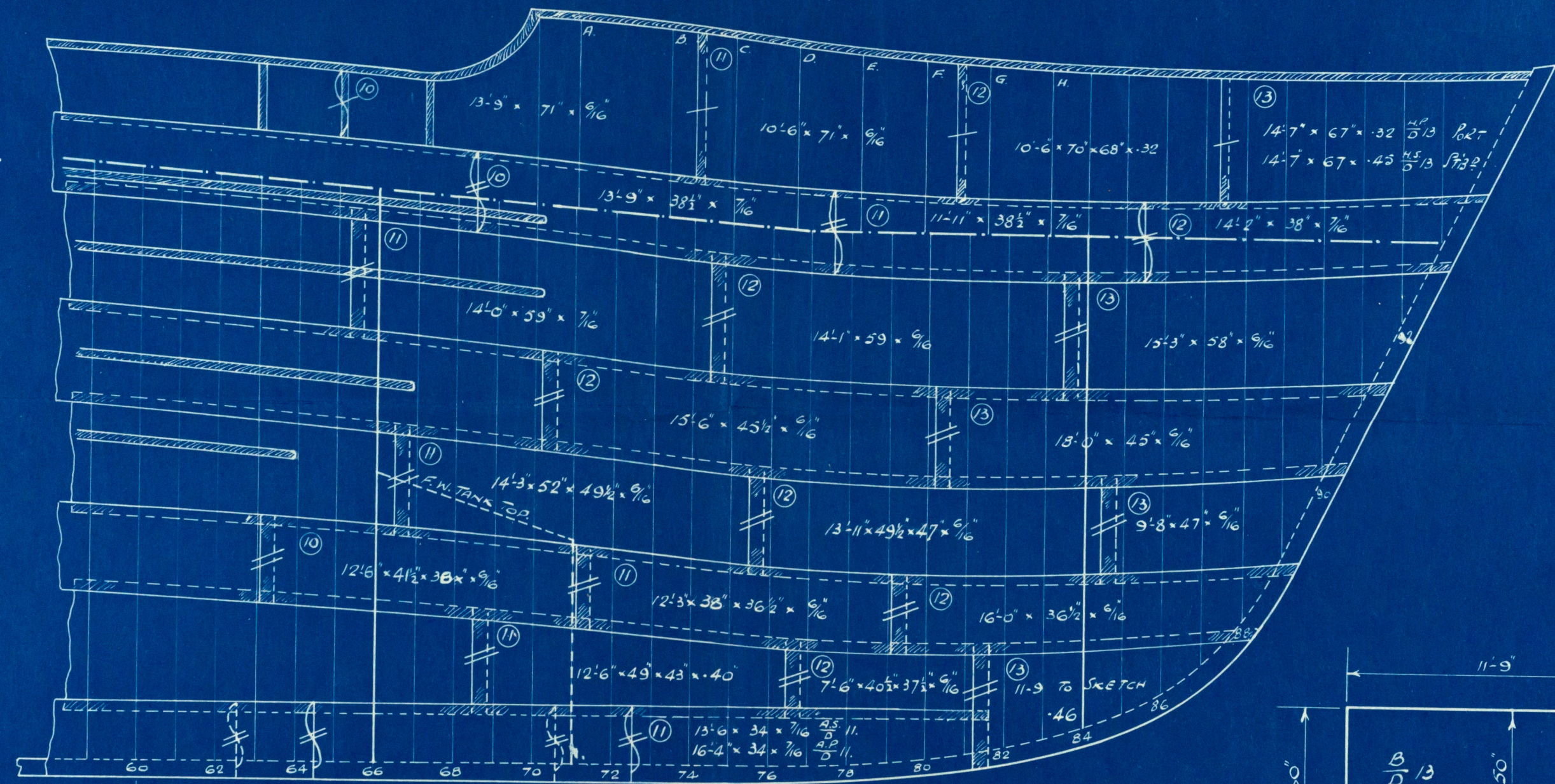
SHELL EXPANSION

NEW FORE END

Scale $\frac{1}{4}" = 1'-0"$

ALL MOULDINGS REMOVED &
REFITTED OR RENEWED TO
BE WELDED TO SHELL - NOT
RIVETED.

H. IN.
G. OUT.
F. IN.
E. OUT.
D. IN.
C. OUT.
B. IN.
A. OUT.



24/2/39



Lloyd's Register
Foundation

002038 002040 0233

S.T. "Danthea"

Messrs. Smith's Dock Co. Ltd.,

Shell Expansion & New fore end

S.S. "Danthea"
MDB, RPT. No. 16585



© 2020

Lloyd's Register
Foundation

002038-002010-0233