

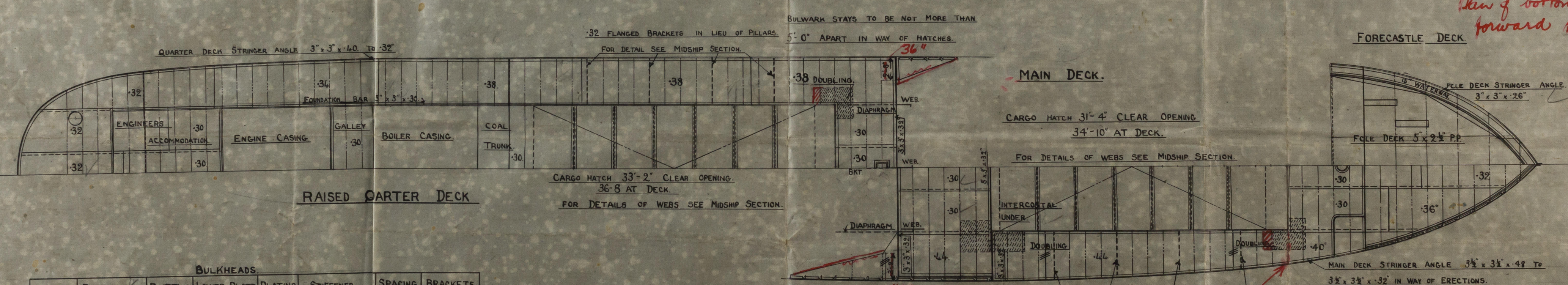
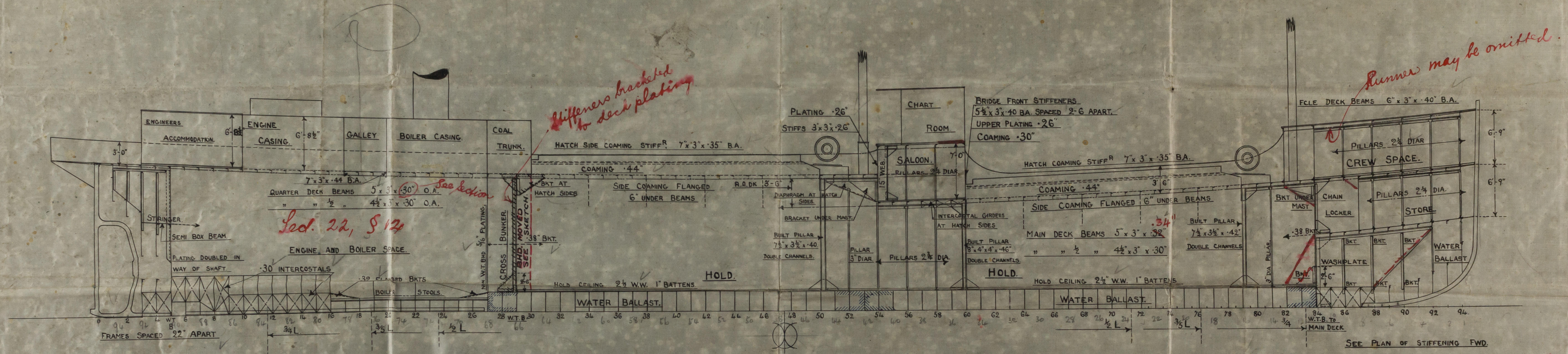
SHIP NO 241-

PROFILE & DECK PLAN.

DIMENSIONS. 175'-0" BP x 26'-10 1/2" MLD x 13'-0" MLD.

SCALE 1/8" = 1 FT.

CLASS LLOYDS 100A1.



BULKHEADS					
No. OF BHD	FRAME	RIVETING	LOWER PLATE PLATING	STIFFENER	SPACING BRACKETS
5 W.T.	5 x 5 x .48 BEAM 3 x 3 x 40	DOUBLE SINGLE	.36 .30	6 x 3 x 40 O	24" 3 3/4 RIVETS
30 W.T.	3 x 3 x 40	SINGLE	.34 .30	6 x 3 x 36 B	30" 3 3/4 RIVETS
84 W.T.	5 x 5 x .40 BEAM 3 x 3 x 40	DOUBLE SINGLE	.34 .30	6 x 3 x 36 O.A. BELOW W.M. 5 x 3 x 30 O.A. ABOVE W.M.	24" 3 3/4 RIVETS

FORE PEAK W.T. FLAT BEAMS 5 x 3 x 30 O.A. KNEES 12 x 30

GOOLE SHIPBUILDING & REPAIRING CO
VICTORIA SHIPYARD.
GOOLE
Drawing No. 2189.
Made by D.S. Checked by
Date FEB. 6. 1920.

002062-002070-0259

Google S.B. & R. Co.

Google S. B. & R. Co.
241 1/2 Brookside ^{Waltham} Rose
Profile & Deck Plan. Hb Rph 33778.

241 751 500 33778
Profile & Deck Plan. 751 Rpt 33778.

See F.E report No 33811