

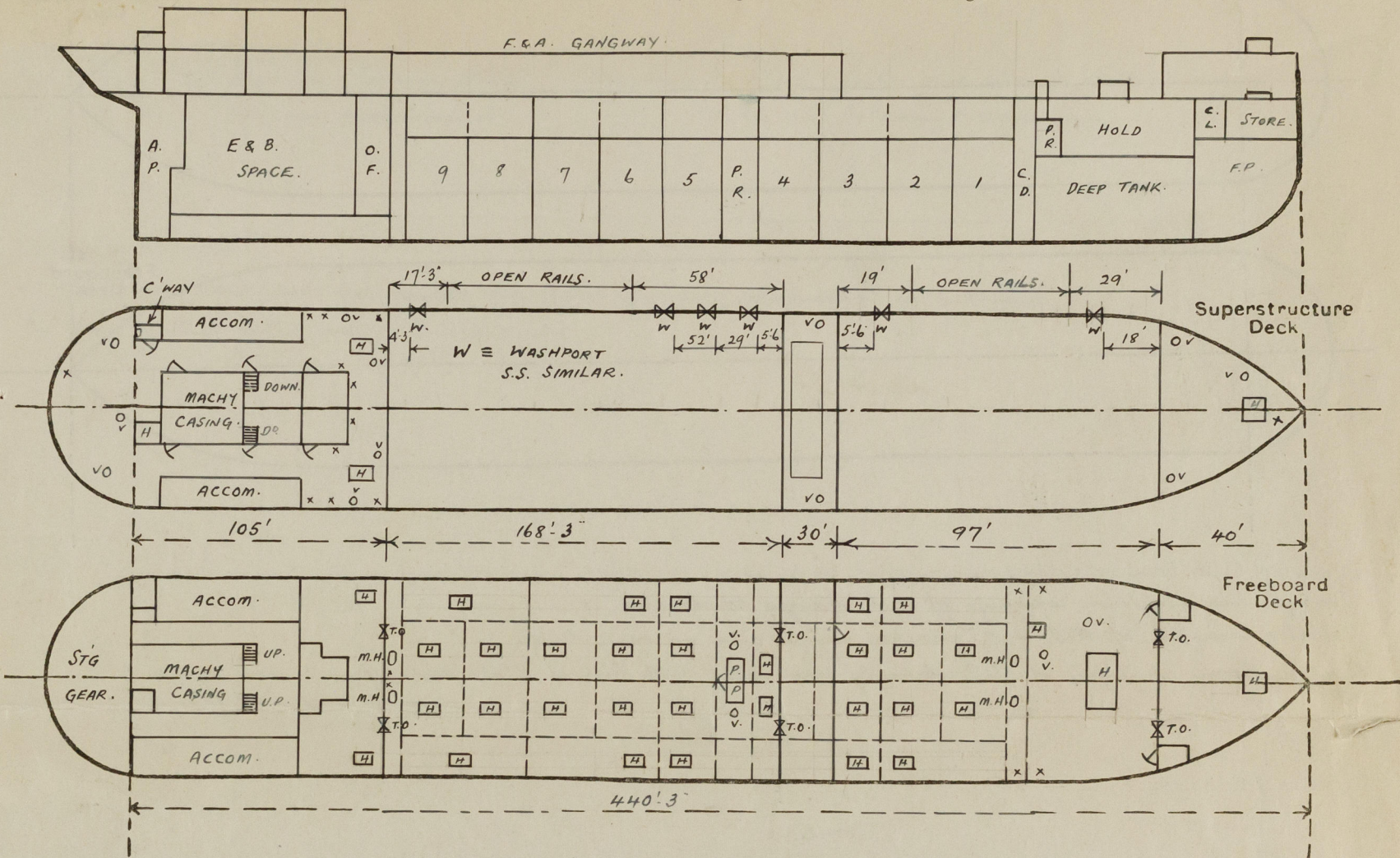
Lloyd's Register of Shipping.
SURVEYS FOR FREEBOARD.

OCT 1953

(CONDITIONS OF ASSIGNMENT.)

Ship's Name "Illustrious" Port of Survey New York.
Official Number ✓ Surveyor's Signature J. Todd. Geo. G. Blackley
Nationality and Port of Registry Panamanian, Panama Date of Survey 12th March 1953 & subsequently.

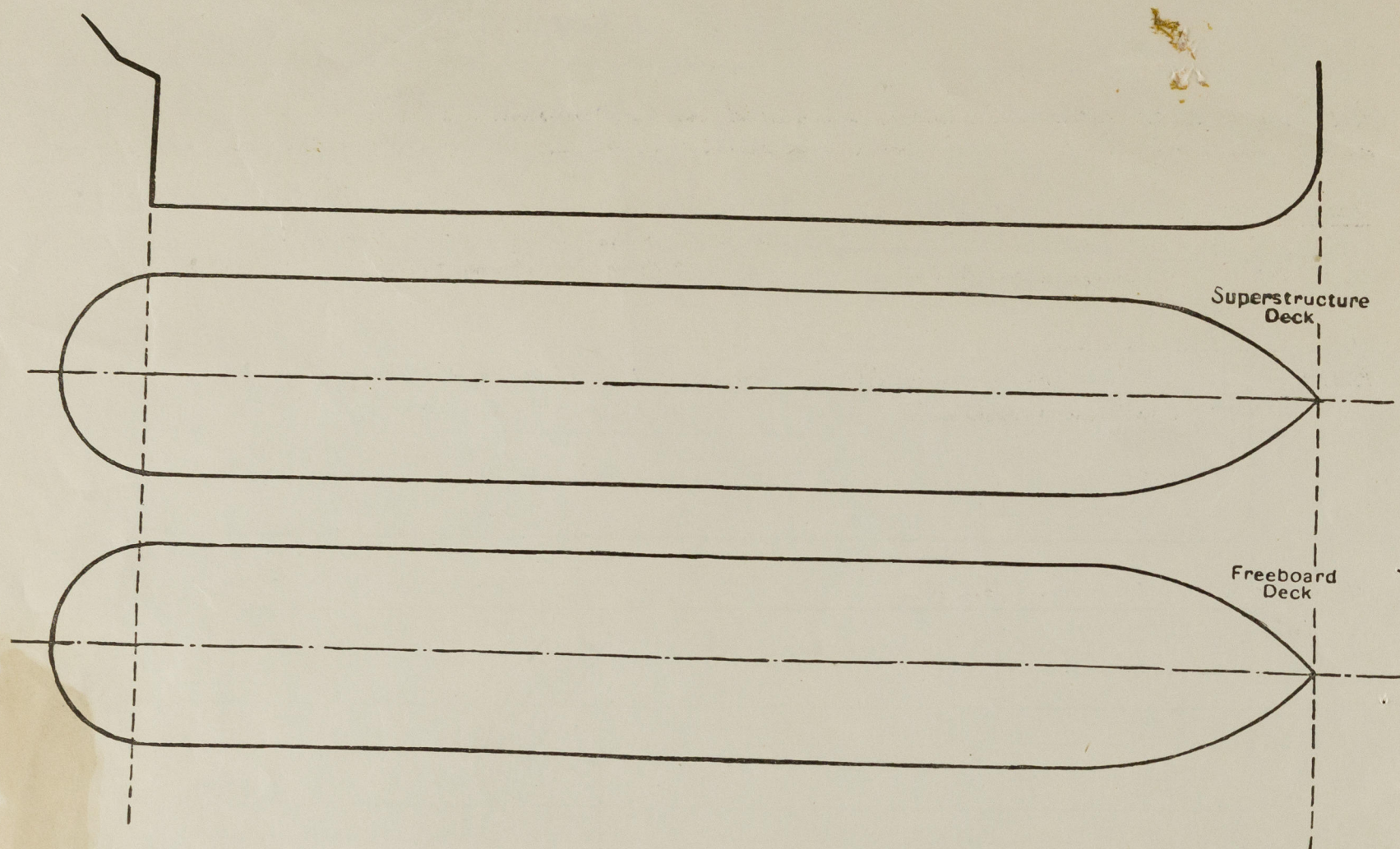
Disposition and dimensions of superstructures, trunks, deckhouses and machinery casings to be inserted in the diagrams and tabular statement:—



Particulars of Superstructures, Trunks, Casings, Deckhouses.								
	Coaming	Plating	Stiffeners	Spacing	End Attachments of Stiffeners	Size of Openings	Height of Sills	Height of Casings
Poop Bulkhead	44"	40"	9 x 3 1/2" x 34 5/8" 3" x 2 1/2" x 30" R.B.	33	Bolt. at top. Lugged at bottom	54" x 37"	17 1/2"	7'-6"
Raised Quarter Deck Bulkhead								
Bridge, After Bulkhead	34	30	4 x 3" x 36	32 1/2"	Sniped each end	60" x 37"	17 1/2"	7'-6"
Bridge, Forward Bulkhead	50	44	8 1/2 x 3" x 34 5/8" 3" x 3" x 40" R.B.	29 1/2"	Lugged " "	60" x 31 1/2"	17 1/2"	7'-6"
Forecastle Bulkhead	✓	30	3" x 2 1/2" x 30" with 3" x 2 1/2" x 30" R.B. on alt. stiff.	31	Sniped " "	60" x 37"	18	7'-6"
Trunk, Aft								
Trunk, Forward								
Exposed Machinery Casings on Freeboard or Raised Quarter Decks								
Exposed Machinery Casings on Superstructure Decks	40	34	4 1/2 x 3" x 30	30"	Sniped at top. Cont. at bottom	60" x 24"	19	7'-6"
Machinery Casings within Superstructures not fitted with Class I Closing Appliances								
Deckhouses on Flush Deck Ships								
Particulars of Closing Appliances (state if capable of being manipulated from both sides).								
Poop Bulkhead	wood storm boards in riveted channels (P+S)							
Raised Quarter Deck Bulkhead								
Bridge, After Bulkhead	wood storm boards in riveted channels (P+S)							
Bridge, Forward Bulkhead	Steel hinged door (P) secured on inside							
Forecastle Bulkhead	wood storm boards in riveted channels (P+S) and steel hinged doors (P+S) capable of being manipulated from both sides							
Exposed Machinery Casings on Freeboard or Raised Quarter Decks								
Exposed Machinery Casings on Superstructure Decks	Steel hinged doors (P+S) capable of being manipulated from both sides							
Machinery Casings within Superstructures not fitted with Class I Closing Appliances								
Deckhouses on Flush Deck Ships								

PARTICULARS OF PROTECTION TO OPENINGS, ETC.

The following diagrams should be used to indicate the positions of cargo and coaling hatchways, gangway, cargo and coaling ports, ventilators, companionways, etc., which would affect the seaworthiness of the ship:—



Particulars of fiddle, funnel and ventilator coamings, engine room skylight and other openings in machinery casing tops and their means of closing:—

Funnel and ventilator coamings of steel strongly constructed.
Fiddle covers (3) of steel with attached hinges and securing device.
Engine Room skylight of steel strongly constructed with hinged flaps and efficient securing device.

Particulars of Flush Bunker Scuttles:—

None.

Particulars of Companionways:—

on upper deck. 7'6" x 18'6" x 6'5" plating 35 with 4' x 3' x 44' stiffeners spaced 30" access by hinged W.T.D. 54' x 24' with 19 1/2" sill. steel skylight over, strongly constructed with hinged flaps having efficient securing device.
on lower deck. 4'6" x 2'3" x 5'6" plating 38 with hinged W.T.D. 54' x 27' and 15' sill.
(Accom. escape)

All doors capable of being operated both sides.

Particulars of Ventilators in exposed positions on freeboard and superstructure destructure decks:—

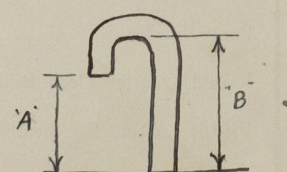
Fore Deck. 1-10' dia. C.V. (PS) 36' x 31' coaming to 3 P. Store
2-12' " " (1P 1S) D° Fore space
Bridge Deck. 2-4' " S.H.V. (1P 1S) 18" to opening to Paint & hand lockers
Poop Deck. 2-12' " C.V. (1P 1S) 36' x 31' coaming to Poop accom.
2-12' " " " D° Crews
1-8' " " S. 25' x 25' " " Showers.
1-8' " " P. 36' x 25' " " Stg. Star space
1-12' " " S. 36' x 31' " " E.R. space.

All vents provided with wood plugs and canvas covers.

Particulars of Air Pipes in exposed positions on freeboard, raised quarter, or superdecks:—

	"A"	"B"
Fore Deck. 1-4 1/2' dia. air pipe to 3 P. Tank	29"	34"
Upper Deck. 4-3' " " " " " 3rd Deck Tank & Coff. "	44"	48"
" 2-3 1/2' " " " " " aft Cofferdam.	38"	46"
Poof Deck. 4-4 1/2' " " " " " O.F. Bunkers	27"	32"
" 2-4 1/2' " " " " " O.F. D.B. Tanks.	17"	28"
" 4-2 1/2' " " " " " F.W. "	18"	26"
" 1-4' " " " " " A.P. Tank.	12"	24"

Air pipes to oil fuel tanks fitted with wire mesh screens in mouths
Air pipes provided with canvas covers.



Particulars of Gangway Cargo and Coaling Ports:—

None.

26 OCT 1953

Particulars of Scuppers and Sanitary Discharge Pipes:—

All scuppers listed below drain spaces situated above the Freeboard Deck.
Scuppers led through shell above Freeboard Deck except where marked ✓ and all fitted with storm valves

From midship accommodation

Port. 1-3' dia. (Captains toilet)
2-2 1/2' " (Washbasins and Pantry)
1-1 1/2' "

Starboard. 2-4' dia. (Hospital and officers toilets)

2-1 1/2' " (Bathroom & Pantry)

From Poof accommodation

Port. ✓ 2-4' dia. (Engineers & Firemans toilets)
4-1 1/2' " (Bathrooms & washbasins)

Starboard. ✓ 2-4' dia. (Sailors and Stewards toilets)

4-1 1/2' " (Bathrooms & washbasins)

Particulars of Side Scuttles:—

11' dia. bronze scuttleports with hinged deadlights of strong construction in Poof space.
No side scuttles fitted below Freeboard Deck.

Vertical distance of Sill of lowest Side Scuttle above top of keel

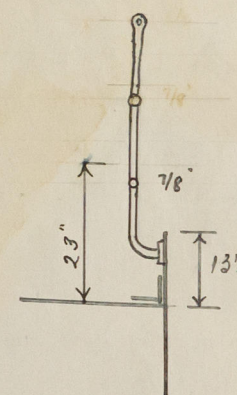
Particulars of Guard Rails:—

on superstructures. 3 guardrails with stanchions 3'3" high spaced 66" apart max.
on upper deck. 3 " " " 3'11" " " 57" "
Bulwarks 3'11" x 3'1" with 6' x 3 1/2' x 38' B.A. rail bar
with 6' x 38' B.P. stanchions spaced 6'0" apart.

Particulars of Gangways, Lifelines, etc:—

None.

See over.



Particulars of Freeing Arrangements.

	Length of Bulwark	Height of Bulwark	Size of Freeing Ports	Number each side	Area each side	Rule area each side
After Well	See sketch	3'-11"	44" x 15"	4	17 sq. ft.	✓
Forward Well	D°	3'-11"	40" x 15"	2	7 1/2 sq. ft.	✓

State position of each freeing port { After Well:— See sketch.
(F. and A. position and height above deck edge) { Forward Well:— Hc. of freeing ports above deck edge 13 1/2"

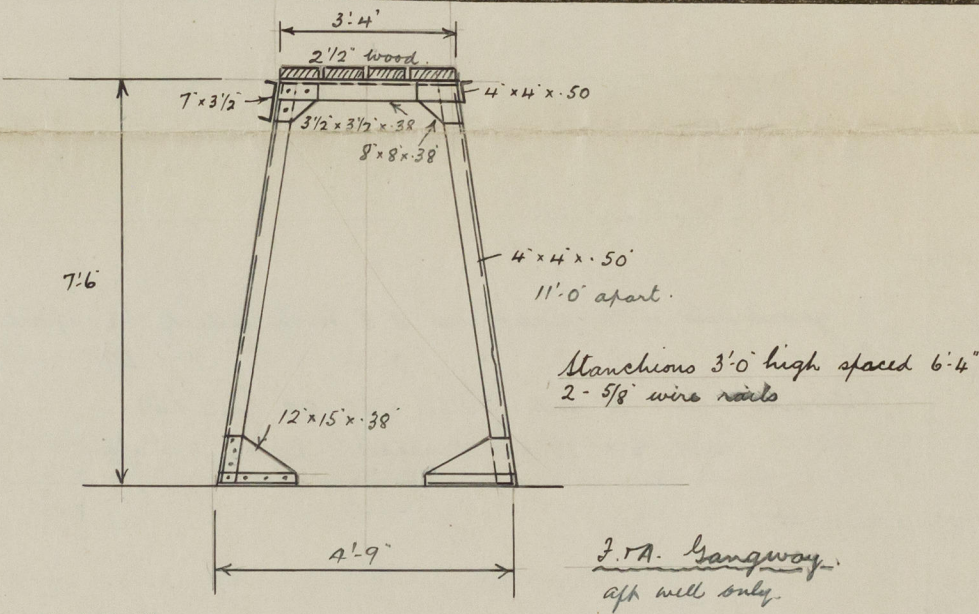
State whether the freeing ports are fitted with shutters, bars, or rails, and give particulars of such:— 4-1' dia. vent. bars in each port.

Additional area where sheer is less than standard.

PARTICULARS OF PROTECTION TO OPENINGS, ETC.

HATCHWAYS ON FREEBOARD AND SUPERSTRUCTURE DECKS.											
		Freeboard Deck				Superstructures					
Description of Hatchway		Brig Hold	Cargo Tanks	Summer Tanks	Fore. Pump Room	Oil fuel Bunker	Fore Peak Store	Forecastle space	Peak space	Peak Store aft.	Coal Hatch Casing Top
Dimensions of Hatchway		7'0" x 14'2"	6'0" x 4'0"	6'0" x 4'0"	4'2" x 2'4"	6'0" x 4'0"	3'9" x 2'6"	3'9" x 2'6"	6'0" x 4'0"	4'0" x 4'0"	10'0" x 4'0"
COAMINGS	Height above Deck	30"	9' x 3 1/2' x 46"	9' x 3 1/2' x 46"	30"	9' x 3 1/2' x 46"	9 1/2"	30"	30"	32"	11"
	Thickness { Sides	44"	BA.	BA.	44"	BA.	44"	44"	44"	44"	38"
	Ends										
	Stiffeners	7' x 5' x 40"	✓	✓	✓	✓	✓	✓	✓	✓	✓
	Brackets, Stays	BA.									
HATCH BEAMS	Number										
	Spacing										
FORE AND AFTERS	Scantling and Sketch										
	Bearing Surface	✓	✓	✓	✓	✓	✓	✓	✓	✓	✓
	Number										
	Spacing										
FORE AND AFTERS	Unsuported Lengths										
	Scantling and Sketch	✓		✓	✓	✓	✓	✓	✓	✓	✓
	Bearing Surface										
HATCH COVERS	Material	Steel	Steel	Steel	Steel	Steel	Wood	Wood	Wood	Wood	Wood
	Thickness	40"	60"	60"	40"	60"	2 1/2"	2 1/2"	2 1/2"	2 1/2"	2 1/2"
	How fitted	✓					Thwart	Thwart	Thwart	Thwart	3 + A.
	Bearing Surface	✓					2 1/2"	2 1/2"	3"	2	2 1/2"
Spacing of Cleats		1" hinged screw toggles 24" apart	1" hinged screw toggles 15" apart.				21"	21"	21"	19"	24"
Number of Tarpaulins							2	2	2	1	1
*Are wood fore and afters steel shod at all bearing surfaces? ✓											
Are battens and wedges efficient and in good condition? yes											
Are tarpaulins in good condition and in accordance with rule requirements? yes.											
Are lashings provided in accordance with rule requirements? ✓											
manholes on 9'6" Deck to Cofferdams: 21' x 15' with 8' x 3 1/2' x 38" C coaming 38" lid 3/4" bolts 4" pitch.											

Particulars of any special features:—



Endorsement at first survey and at surveys for renewal of Certificate:—

The fittings and appliances are in accordance with the particulars shown on this form (or as now modified) and are in good condition.