

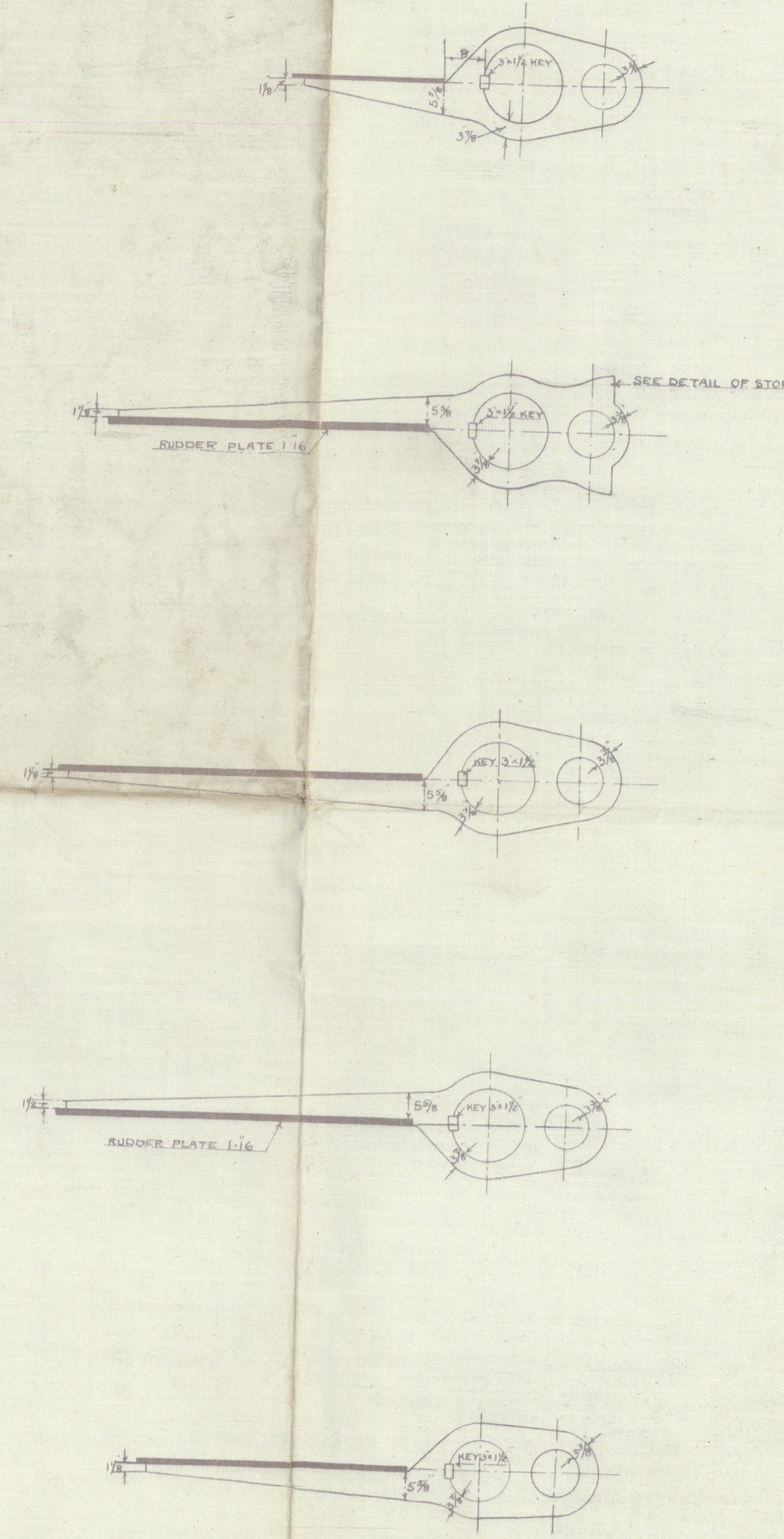
SIR W. G. ARMSTRONG, WHITWORTH & CO. LD.
NEWCASTLE-UPON-TYNE.
No. 23649 DATE 19/6/1944
ARMSTRONG YARD.

RUDDER PLAN.

DETAILS 1 1/2 INS - 1 FOOT, OR AS STATED.

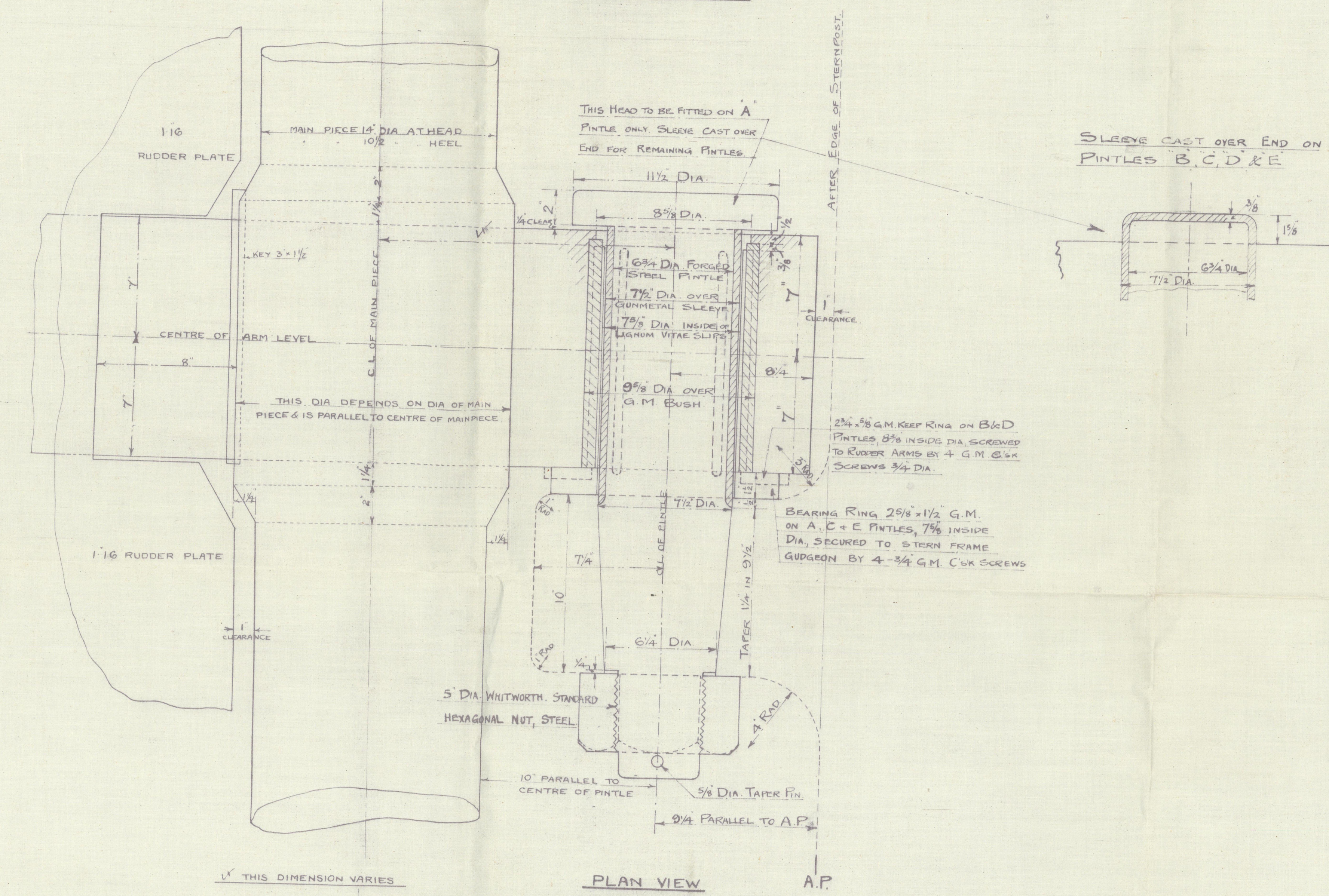
MATERIAL

RUDDER STOCK & MAIN PIECE..... FORGED STEEL
 RUDDER ARMS..... WROUGHT IRON OR FORGED STEEL
 ALL TO PASS BOTH LLOYDS & BOARD OF TRADE TESTS



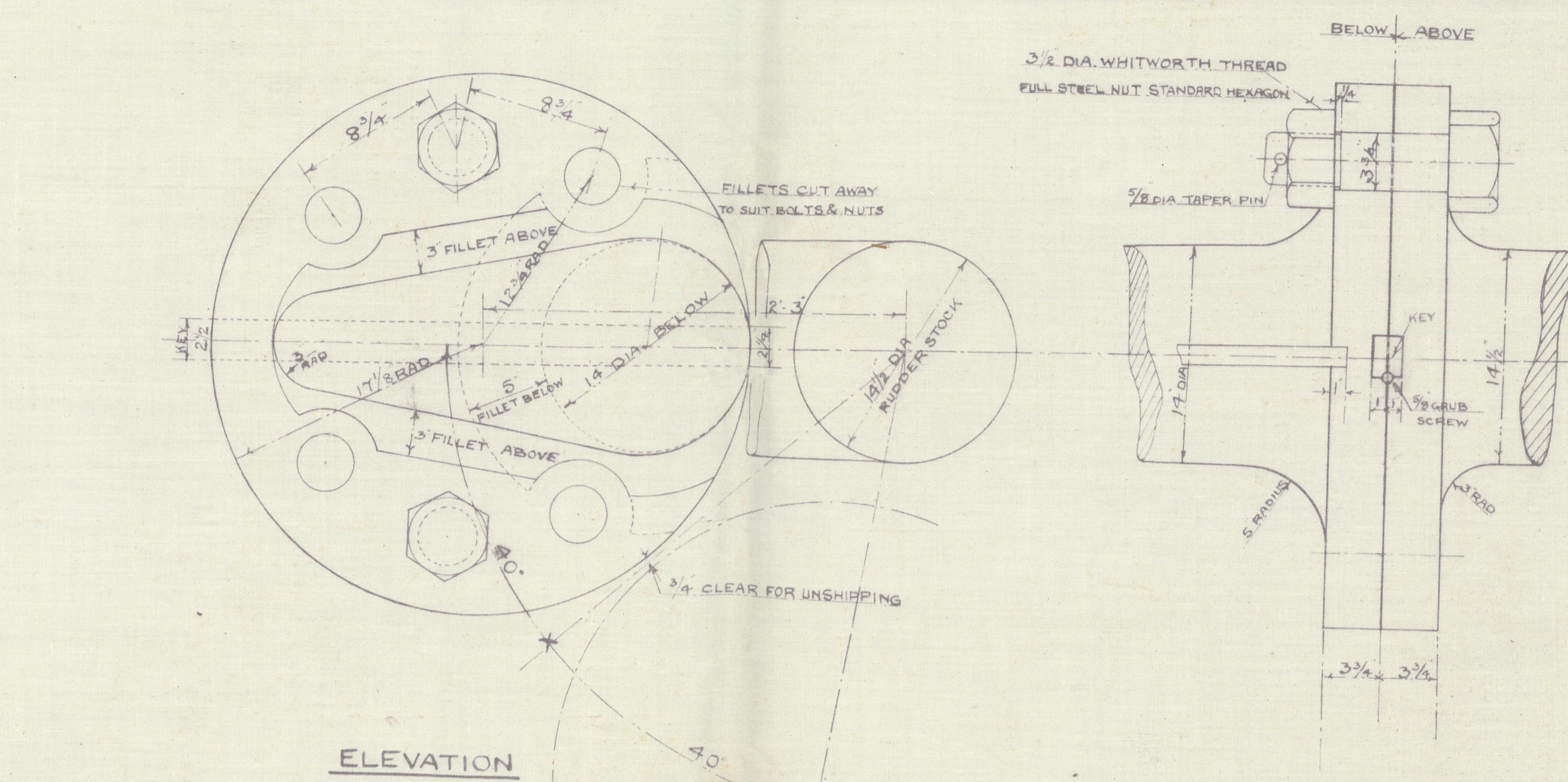
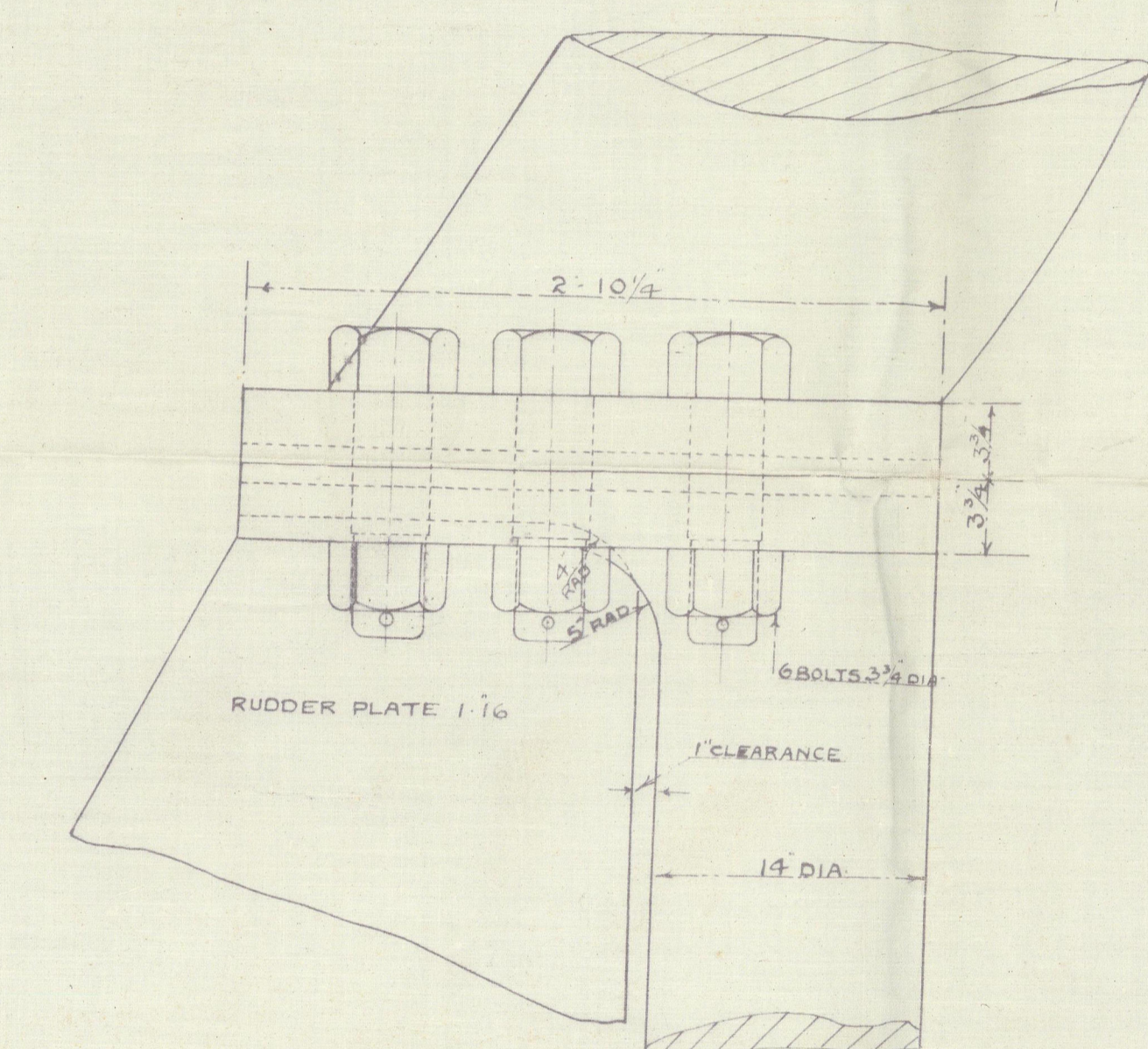
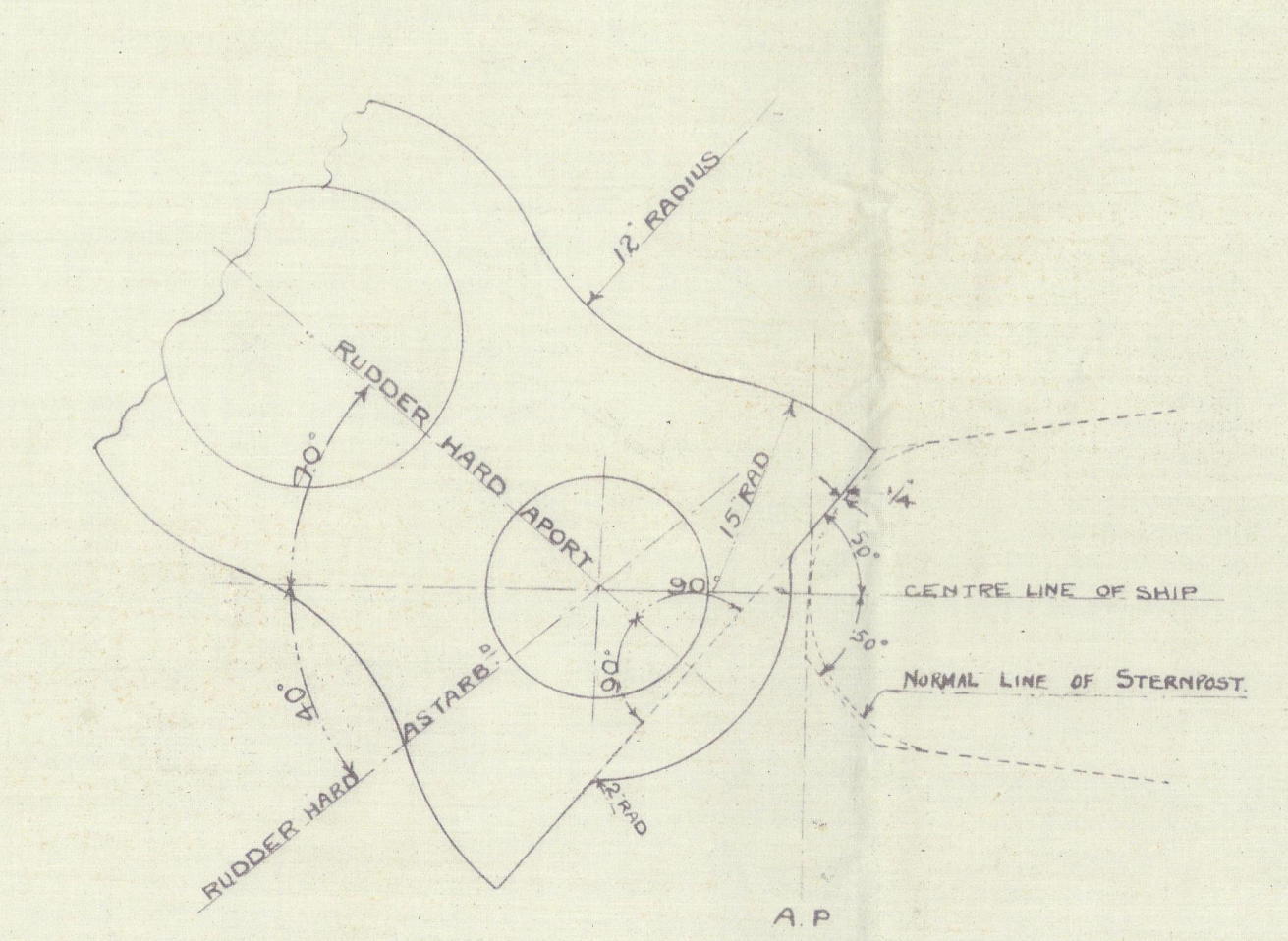
SCALE 3" = 1 FOOT

SECTIONAL ELEVATION



SCALE 1 1/2 INS. = 1 FOOT.

SECTION

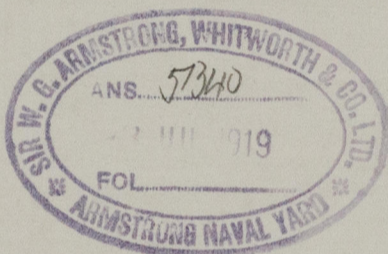
ELEVATIONDETAILS OF STOP

MESSRS ARMSTRONG, WHITWORTH & CO. LTD.
(NAVAL YARD)

RUDDER

NOS 940 AND 941 SHIPS

(DUPLICATE OF MESSRS VICKERS LTD NO. 498)



S.S. *Ascania*.

NEWCASTLE ON TYNE.

Report No. 7952.



© 2020

Lloyd's Register
Foundation

002079-002084-0052