

S.S. N^o 611-612.

RUDDER & STERN POST.

9/1/34.
ARRANGEMENT 1/2 INCH = ONE FOOT. DETAILS 1/8 FULL SIZE.

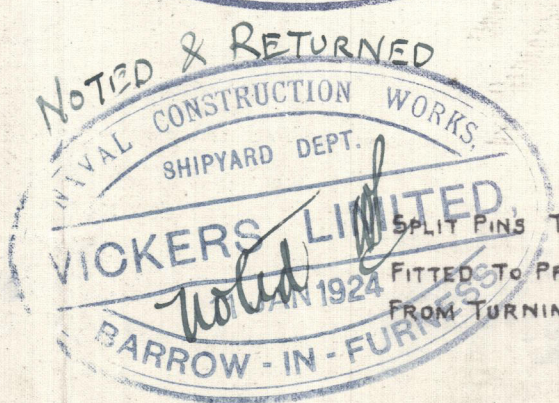
RUDDER FRAME & STERN FRAME TO BE OF FORGED STEEL TO LLOYDS' TESTS.

~~L x D = 3920.~~ - SPEED 13 KNOTS. - AREA OF RUDDER = 646. - A x D = 167.

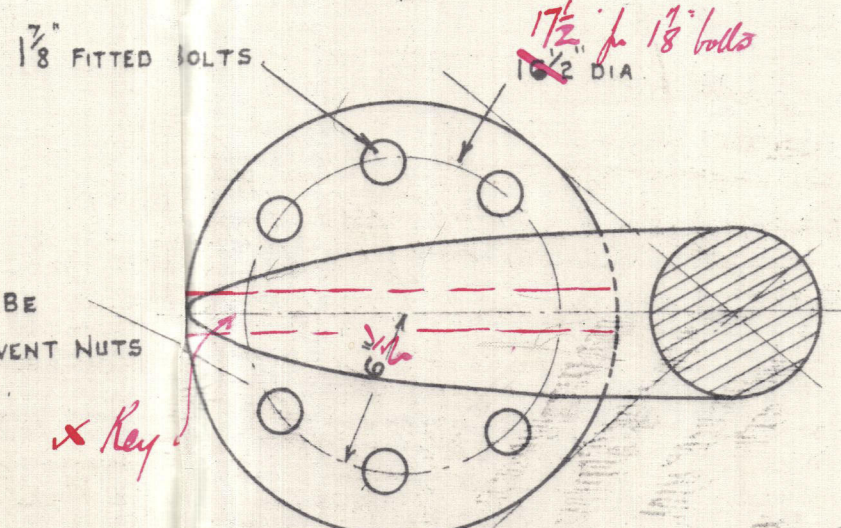
RIVETS THRO' RUDDER PLATE & ARMS 1 1/8" DIA. SPACED 4 1/2" DIAS. C^s TO C^s REELED.

COUNTERSUNK IN BOTH PLATE & ARMS.

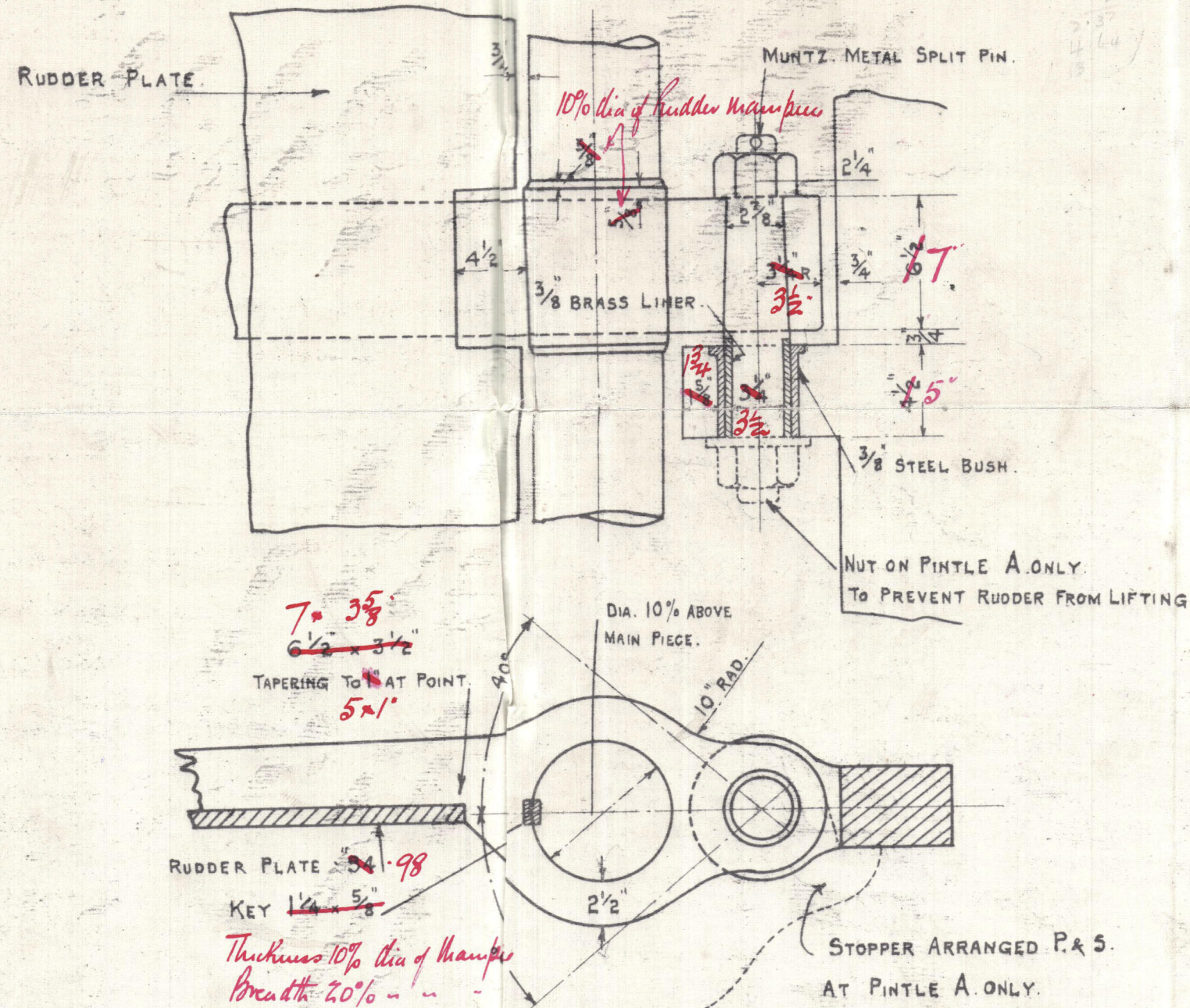
RIVETS IN STERN FRAME 1" DIA. 5 DIA^s APART C^s TO C^s REELED.



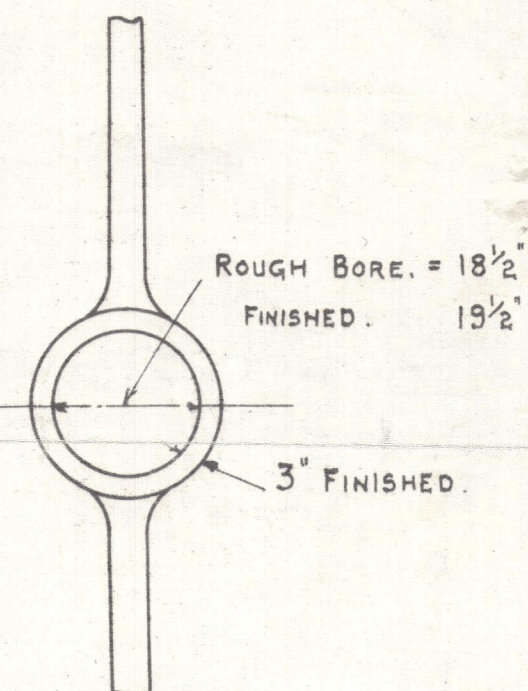
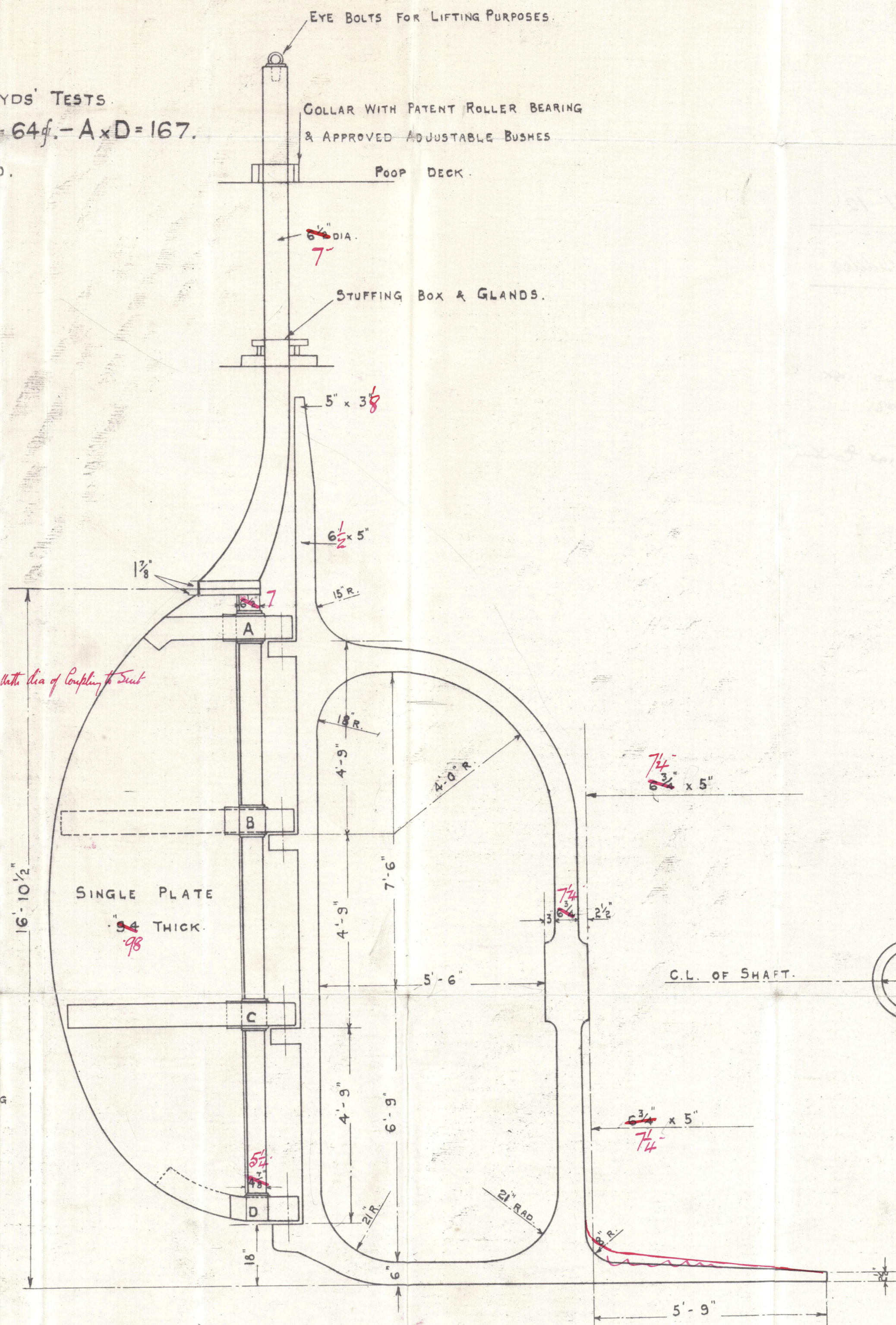
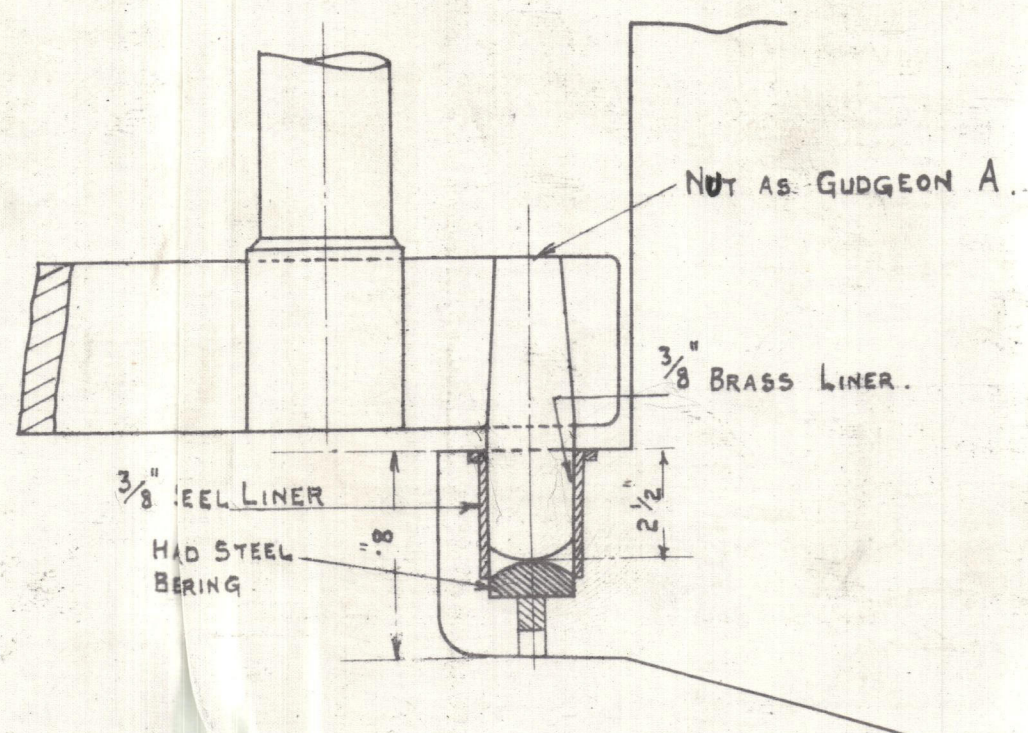
PLAN OF COUPLING.



DETAIL OF GUDGEON A, B & C.



DETAIL OF GUDGEON D.



8.1.24

bickers Ld. Nos 611-12

Stern Yarns & Rudder

* S. S. "Deane" - One 1st
Entry Report No 2081

S. S. "Don" - One 1st Entry
Report No 2106.



© 2021

Lloyd's Register
Foundation

002085-002073-0054