

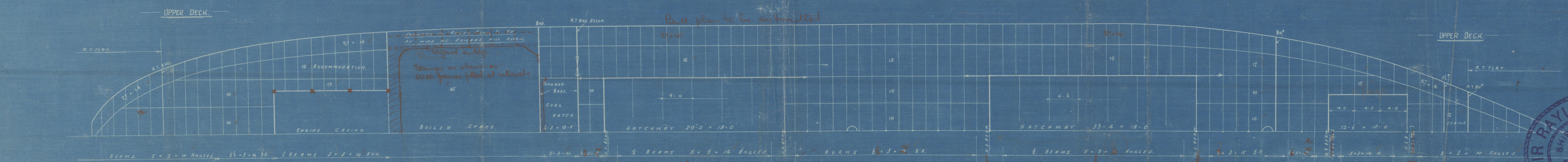
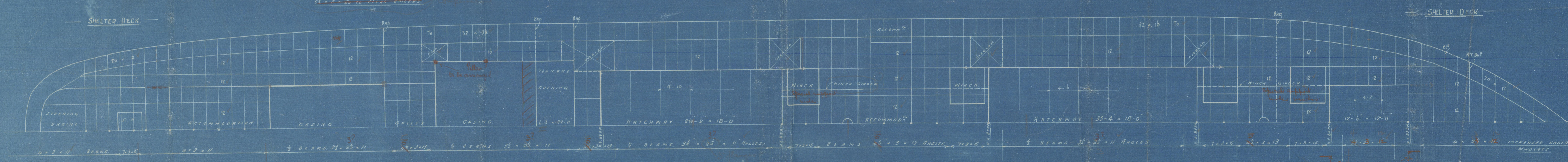
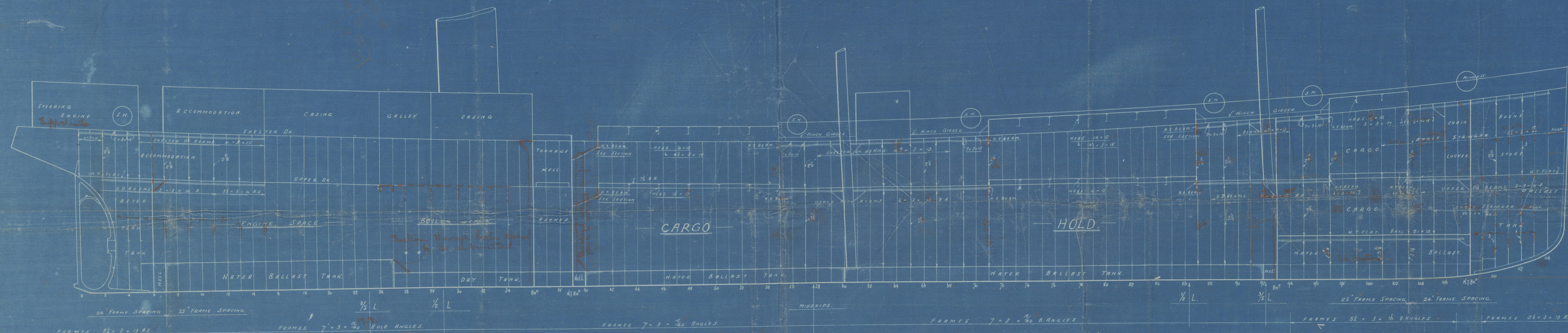
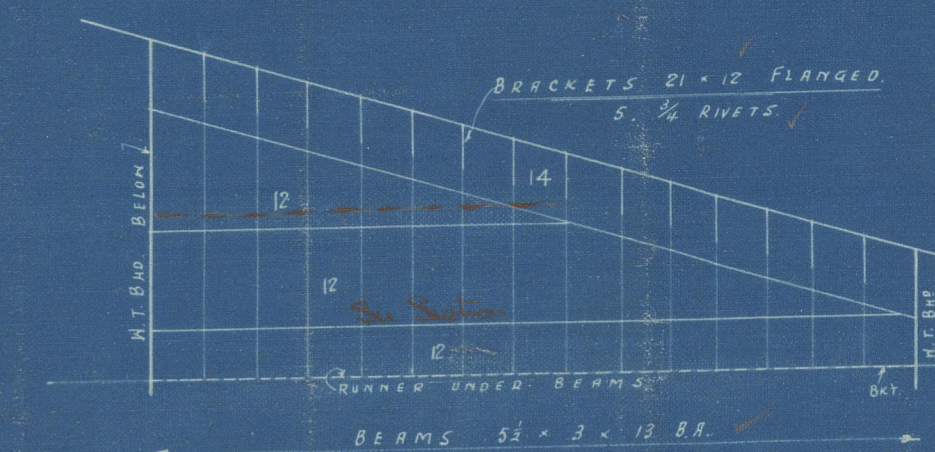
N<sup>o</sup> 591  
PROFILE AND DECK PLANS.

240'-0" x 34'-9" x 17'-0"

To CLASS B5

SCALE 1/8" = 1' 00"

15 JUN 1914  
APPROVED 35  
DEEP TANK TOP



SIR RAYLTON DIXON & CO LTD  
SHIP BUILDERS & ENGINEERS  
No. 3536  
13 JUN 1914  
CLEVELAND DOCKYARD  
MIDDLESBROUGH

Sir R. Dillon's

Nº 591

FINAL PROFILE + DECK

240' x 34'-9" x 17'-0"

AMENDED

S/S PRINCESS IMA.

T.C. 26-8-14

EX

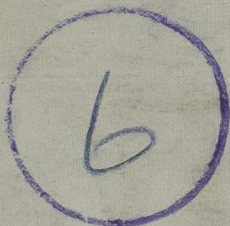
Cheshire Coast

NOW

CAID ALLAL



RECORDS DEPT.  
LONDON



© 2020

Lloyd's Register  
Foundation

002101-002108-0002