

8 NOV 1950

Index No. 42564
(For London Office only.)

Lloyd's Register of Shipping.

SURVEYS FOR FREEBOARD. Gro. Rpt. No: 502

(COMPUTATION FOR STEAMER, SAILING SHIP, TANKER.)

Ship's Name WESTWARD HO	Official Number	Nationality and Port of Registry DUTCH GRONINGEN	Gross Tonnage 400	Date of Build 1950	Port of Survey GRONINGEN
Moulded Dimensions: Length 43100 Breadth 7000 Depth 4100 (RQD) 3200 (W.D.K.)					Date of Survey 10-1950
Moulded displacement at moulded draught = 85 per cent. of moulded depth 655 m³					Surveyor's Signature <i>[Signature]</i>
Coefficient of fineness for use with Tables .716 ✓					Particulars of Classification 100 A1 CONTEMPLATED

DEPTH FOR FREEBOARD (D). **3200**

Moulded depth **RQD** ... **4100**

Stringer plate ... **0**

Sheathing on exposed deck

$T \left(\frac{L-S}{L} \right) = \checkmark$

Depth for Freeboard (D) = **3208**
~~4108~~

DEPTH CORRECTION.

(a) Where D is greater than Table depth
(D-Table depth) R = **833(3.208-2.873) 10.883 = +30 1/2**

(b) Where D is less than Table depth (if allowed)
(Table depth-D) R = **335**

If restricted by superstructures ✓

ROUND OF BEAM CORRECTION.

Moulded Breadth (B) **7800**

Standard Round of Beam = $\frac{B \times 100}{50} =$ **156**

Ship's Round of Beam = **190**

Difference **+ 34**

Restricted to

Correction = $\frac{\text{Diff}^2}{4} \times \left(1 - \frac{S_1}{L} \right) = \frac{34^2}{4} \times 2.193 = -2 \text{ m/m.}$

DEDUCTION FOR SUPERSTRUCTURES.

	Mean Covered Length (S)	Equivalent Enclosed Length (S ₁)	Height	Height Correction	Effective Length (E)
Poop enclosed ...	14270	14270	900		14270
„ overhang ...	13201				
R.Q.D. enclosed ...	13201	13201	900	70/995	11940
„ overhang ...					
Bridge enclosed ...					
„ overhang aft ...					
„ overhang forward ...					
Fore enclosed ...	5627	5627	3040/1850		5627
„ overhang ...	1100	550			550
Trunk aft ...					
„ forward ...					
Tonnage opening aft ...					
„ „ forward ...					
Total ...	34198	33648			32387

Standard Height of Superstructure **1830 m/m.**

„ „ R.Q.D. **995 m/m.**

Deduction for complete superstructure **512 m/m.**

Percentage covered $\frac{S}{L} =$ **79.34**

„ „ $\frac{S_1}{L} =$ **78.07**

„ „ $\frac{E}{L} =$ **75.14**

Percentage from Table, Line A. **69.32**
(corrected for absence of forecastle (if required))

Percentage from Table, Line B.
(corrected for absence of forecastle (if required))

Interpolation for bridge less than 2L (if required)

Deduction = **512 x .6932 = -355 m/m ✓**

SHEER CORRECTION.

Station	Standard Ordinate	S M	Product	Actual Ordinate	Effective Ordinate	S M	Product
A.P. ...	613	1	613	646	646	1	646
1/4 L from A.P. ...	272	4	1088	285	285	4	1140
1/2 L „ ...	68	2	136	66	66	2	132
Amidships ...	✓	4	✓	0	✓	4	✓
3/4 L from F.P. ...	136	2	272	140	140	2	280
3/8 L „ ...	545	4	2180	561	561	4	2244
F.P. ...	1226	1	1226	1260	1260	1	1260
Total ...			5515				5702

Correction = $\frac{\text{Difference between sums of products}}{18} \left(\frac{S}{2L} \right) = \frac{187}{18} \left(\frac{.75 - .3967}{2} \right) = -4 \text{ m/m.}$

If limited on account of midship superstructure. **4 x 90/995 = -4 m/m.**

Mean actual sheer aft =

Mean standard sheer aft =

Mean actual sheer forward =

Mean standard sheer forward =

Length of enclosed superstructure forward of amidships = **7.1L.**

„ „ aft of „ = **.5L.**

Deduction for Tropical Freeboard.

Addition for Winter and Winter North Atlantic Freeboard.

Depth to Freeboard Deck = **4.108**

Summer freeboard = **950**

Moulded draught (d) = **3.158**

Deduction for Tropical freeboard and addition for

Winter freeboard = $\frac{d}{48} \text{ inches} = 66 \text{ m/m} = 7 \text{ cms.}$ Addition for Winter North Atlantic Freeboard (if required) = **12 cms.**

Deduction for Fresh Water.

Displacement **moulded** in salt water at summer load water line

$\Delta =$ **760 m³**

Tons per inch immersion at summer load water line

$T =$ **2.77 m³/cm**

Deduction = $\frac{\Delta}{40 T}$ inches= **69 m/m**
= **7 cms**

TABULAR FREEBOARD corrected for Flush Deck (if required)

Correction for coefficient

Depth Correction ... **30** ✓

Deduction for superstructures ... **✓ 355**

Sheer correction ... **✓ 4**

Round of Beam correction ... **✓ 2**

Correction for Thickness of Deck amidships ... **900** ✓

Other corrections, scantlings, etc. ... **✓**

366

376

+	-
30	✓
✓	355
✓	4
✓	2
900	✓
✓	✓
930	361

Summer Freeboard = **945**

SUMMER FREEBOARD amidships from Centre of Disc to top of Deck Line, Wood, Steel, Deck :-

Tropical Fresh Water Line above Centre of Disc ... **7 cms** ✓

Fresh Water Line „ „ ... **7 cms** ✓

Tropical Line „ „ ... **NIL (LIMITED)**

Winter Line below „ „ ... **7 cms** ✓

Winter North Atlantic Line „ „ ... **12 cms** ✓

Tropical Fresh Water Freeboard ... **88** ✓

Fresh Water „ „ ... **88** ✓

Tropical „ „ ... **95 (LIMITED)**

Winter „ „ ... **1.02**

Winter North Atlantic „ „ ... **1.07**

95 cms. (LIMITED) ✓

88

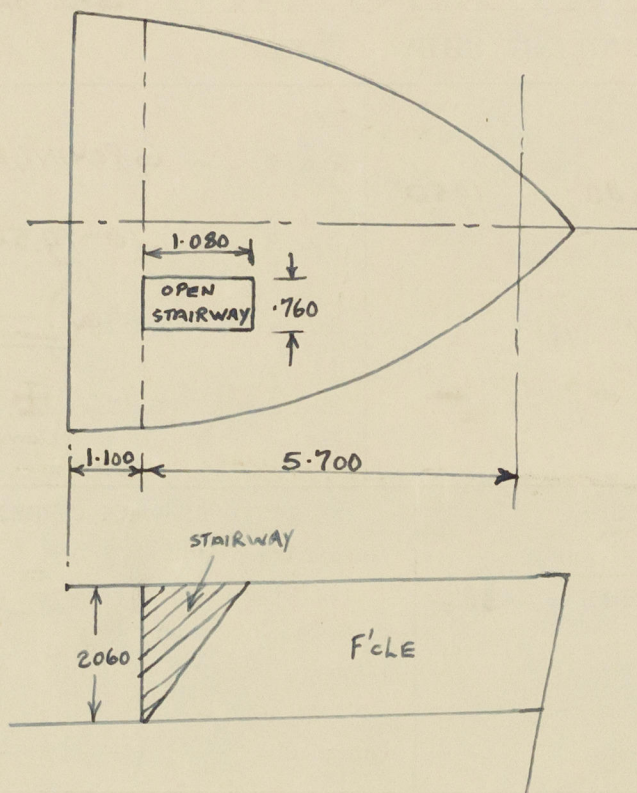
88

95 (LIMITED)

1.02

1.07

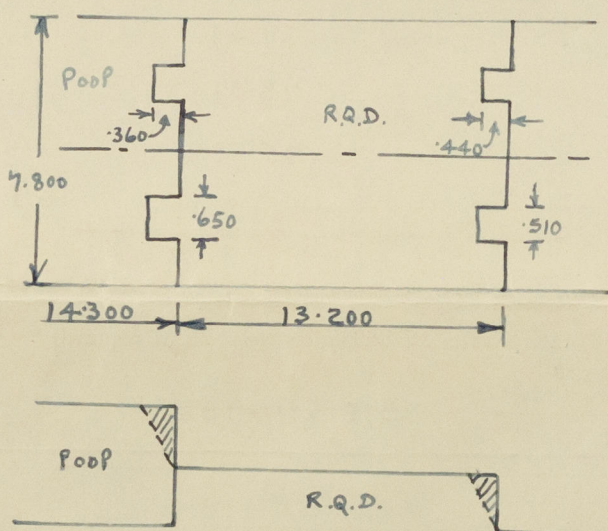
A new form should be prepared if any alterations that affect the freeboard have been made. If no such alterations have been made, the Surveyor should endorse the form on this side with his signature and the date.



$$\text{ENCLOSED LENGTH} = 5.700$$

$$\frac{-.76 \times .54}{5.59} = \frac{.073}{5.627} = \text{Equiv. enclosed.}$$

$$O/H = 1.100$$



$$\text{Enclosed length of Poop} = 14.300$$

$$\frac{-.36 \times .65}{7.800} = \frac{.030}{14.270}$$

$$\text{Enclosed length of R.Q.D.} = 13.200$$

$$\frac{-.44 \times .51}{7.800} = \frac{.029}{13.171}$$

$$+ \frac{.030}{13.201}$$

Trade of ship OCEAN TRADE

Names of sister ships M.V. "TRITON", yard no. 259

Builder's name and yard number C.V. C.J. v.d. Werff's Scheepsbouw, Westerbroek, yard no. 260

Owners S. Boudewijn

Fee 142.-



© 2020

Lloyd's Register
Foundation