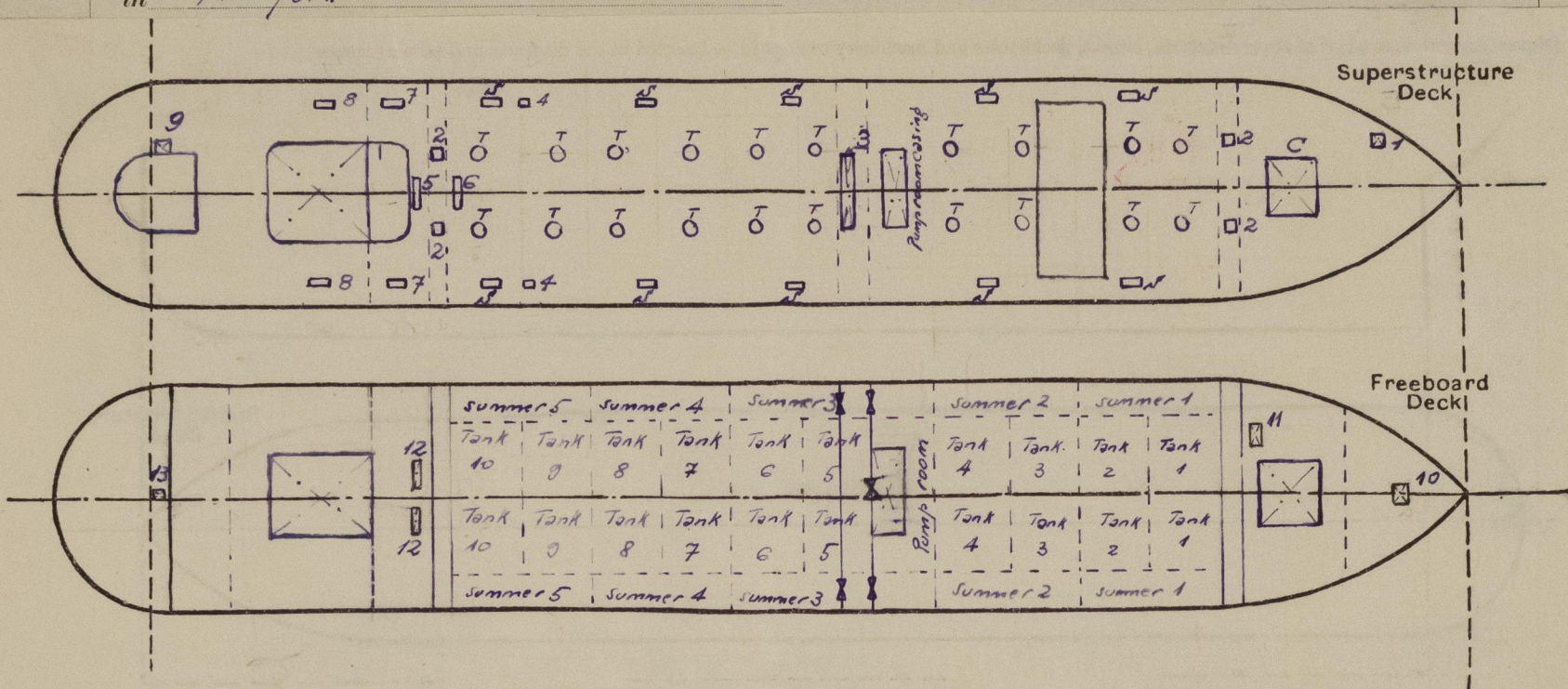


Lloyd's Register of Shipping.

Ship's Name *S/T Standard*

Official No.

Memorandum of alterations reported since ship was surveyed for assignment of Load Lines in *New York*



On the second Dk all the cargo tank hatchways are permanently closed and trunked to the shelter deck, the dry cargo hold hatchway is as indicated on the origin. Rpt C11 and the following other hatchways have been found

Description	Mark on the sketch	Dimensions of hatchways	Coamings	Hatch covers
Access to space above forepeak tank	10	3'5" x 3'	height 11" thick 7/16"	hinged wood cover 2 1/2" thick ✓
Access to lower cargo tween deck	11	2'11" x 2'6"	height 3" thick 7/16"	wood covers 2 1/2" thick ✓
Access to O.F. bunkers aft	12	3' x 5'2"	height 8" thick 7/16"	steel hinged M.T. cover secured by means of 10 butterfly nuts & bolts ✓
Access to space above after peak tank	13	3'2" x 3'5"	height 8" thick 7/16"	wood covers 2 1/2" thick ✓

2) A gangway is now fitted between fore & after deckhouses strong & efficiently braced fore & aft and with spacing of supports 4'

J 24-9-51

G.H.W.
111 DEC 1951