

# Lloyd's Register of Shipping.

## SURVEYS FOR FREEBOARD.

### (CONDITIONS OF ASSIGNMENT.)

SUNDERLAND

34694

Ship's Name *M.V. "ARMILLA" (EX HELIX '38)*Port of Survey *SUNDERLAND*

Official Number

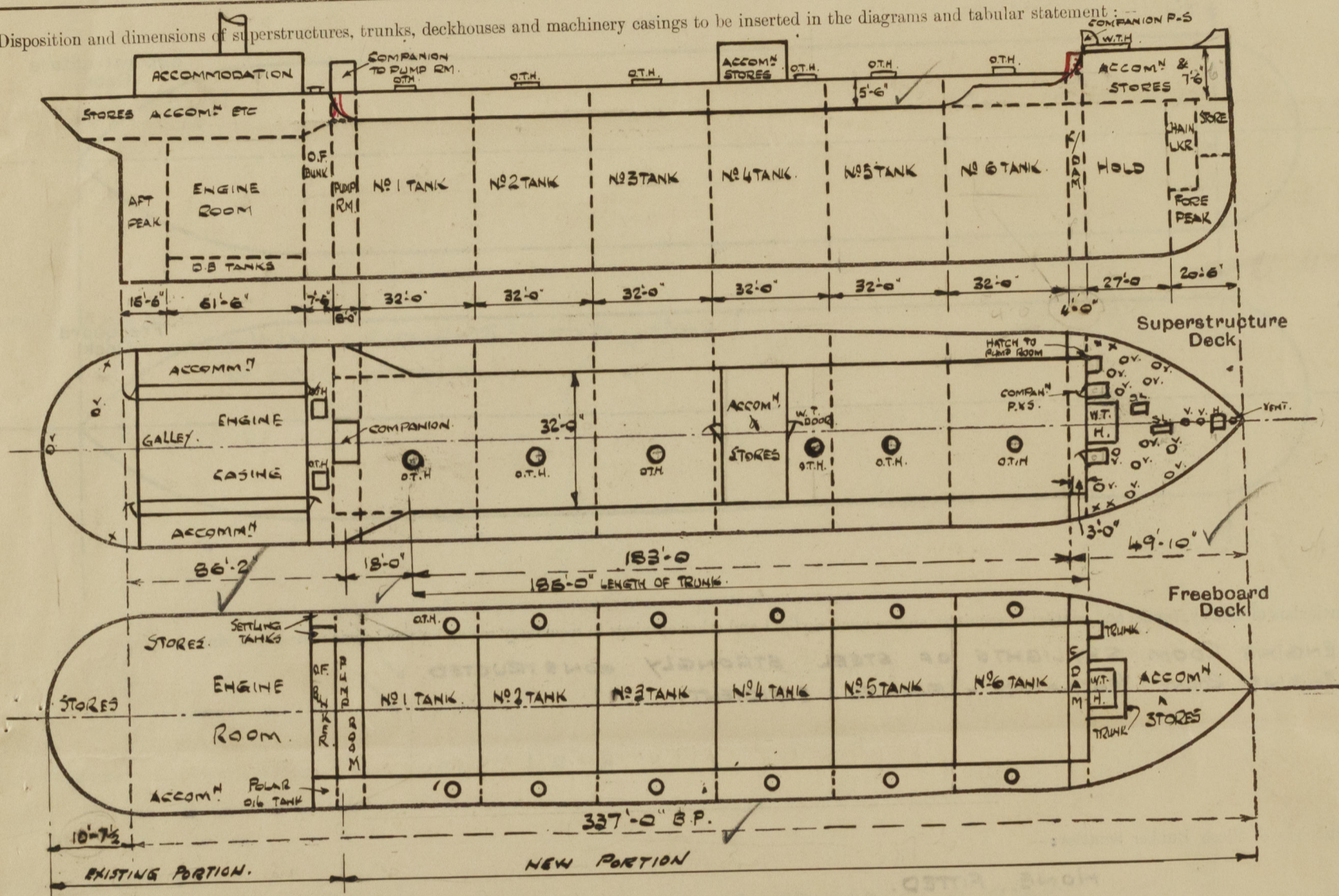
Surveyor's Signature

*D. J. MacLachlan - E. D. Forsyth*Nationality and Port of Registry *DUTCH. WILLEMSTAD*

Date of Survey

*MAY 1947*

Disposition and dimensions of superstructures, trunks, deckhouses and machinery casings to be inserted in the diagrams and tabular statement:



Particulars of Superstructures, Trunks, Casings, Deckhouses.

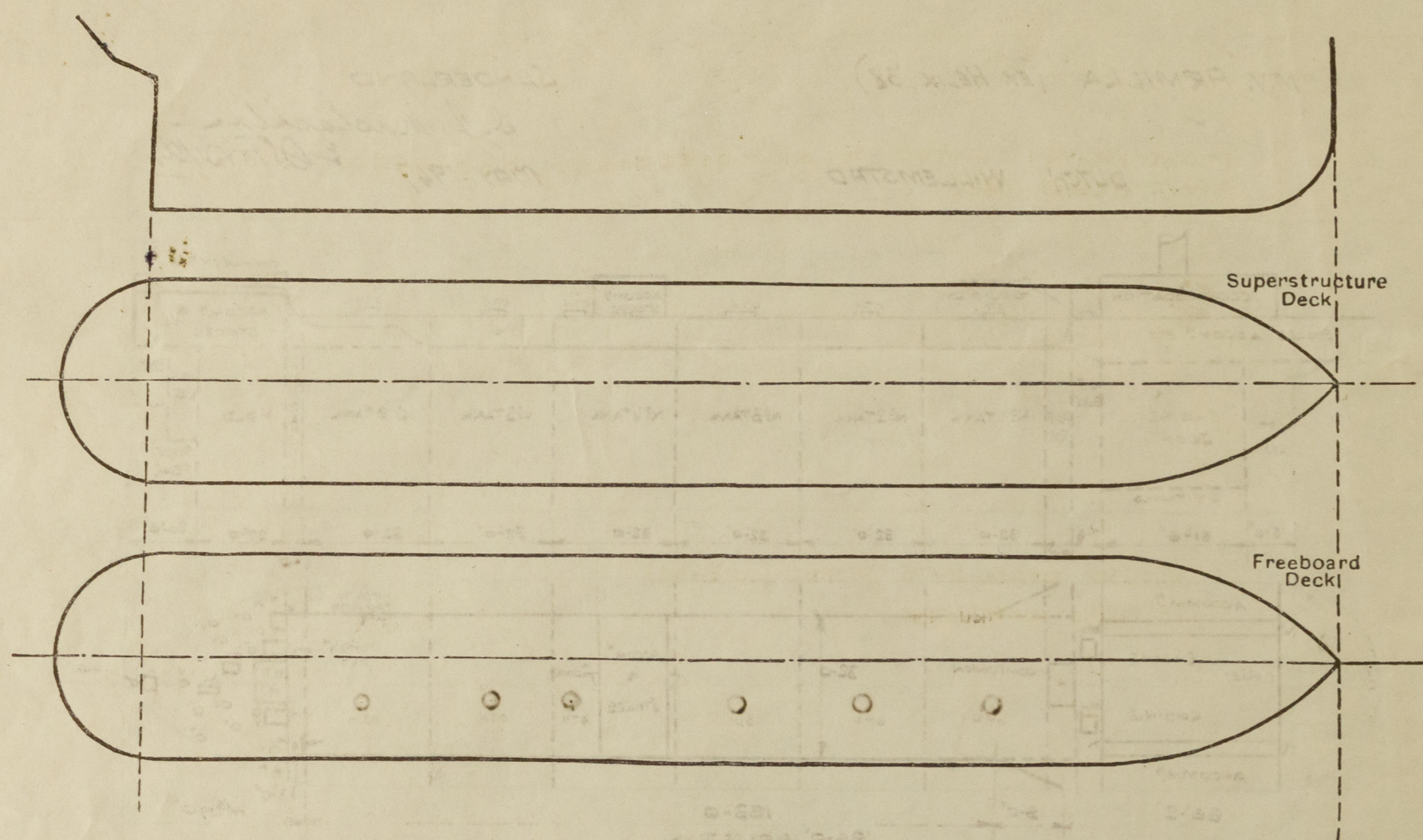
	Coaming	Plating	Stiffeners	Spacing	End Attachments of Stiffeners	Size of Openings	Height of Sills	Height of Casings
Poop Bulkhead ...	.44.	.44.	9" x 3" x 40 B.A.	31"	BRACKETS.	✓	✓	
Raised Quarter Deck Bulkhead ...	✓							
Bridge, After Bulkhead ...								
Bridge, Forward Bulkhead ...								
Forecastle Bulkhead ...	.30	.30	4" x 3" x 30	HORIZONTAL 32"	WELDED AT ENDS.	SEE COMPANIONS.	✓	
Trunk, Aft ...	.48	.48	6" x 3" x 40 B.A.	HORIZONTAL	BRACKETS.	✓		
Trunk, Forward ...	.42	.42	DO	DO.	✓			
Exposed Machinery Casings on Freeboard or Raised Quarter Decks ...								
Exposed Machinery Casings on Superstructure Decks ...								
Machinery Casings within Superstructures not fitted with Class I Closing Appliances ...								
Deckhouses on Flush Deck Ships ...								

Particulars of Closing Appliances (state if capable of being manipulated from both sides).

Poop Bulkhead ...	INTACT. ✓
Raised Quarter Deck Bulkhead ...	✓
Bridge, After Bulkhead ...	✓
Bridge, Forward Bulkhead ...	✓
Forecastle Bulkhead ...	TWO STEEL W.T. DOORS OPERATED FROM BOTH SIDES. (SEE COMPANIONS). ✓
Exposed Machinery Casings on Freeboard or Raised Quarter Decks ...	✓
Exposed Machinery Casings on Superstructure Decks ...	✓
Machinery Casings within Superstructures not fitted with Class I Closing Appliances ...	✓
Deckhouses on Flush Deck Ships ...	✓

# PARTICULARS OF PROTECTION TO OPENINGS, ETC.

The following diagrams should be used to indicate the positions of cargo and coaling hatchways, gangway, cargo and coaling ports, ventilators, companionways, etc., which would affect the seaworthiness of the ship:—



Particulars of fiddle, funnel and ventilator coamings, engine room skylight and other openings in machinery casing tops and their means of closing:—

ENGINE ROOM SKYLIGHTS OF STEEL STRONGLY CONSTRUCTED. ✓  
ENGINE ROOM VENTILATORS & FUNNEL EFFICIENT. ✓

Particulars of Flush Bunker Scuttles:—

NONE FITTED. ✓

Particulars of Companionways:—

TWO STEEL COMPANIONWAYS ON FORECASTLE DECK WITH HINGED STEEL DOORS OPERATED FROM BOTH SIDE. 4'-0" x 2'-1" COAMING 24". ✓  
ONE STEEL COMPANIONWAY ON BOAT DECK WITH STRONG WOOD DOOR. Sill 18" operated from both sides. ✓  
ENTRANCE TO PUMP ROOM 5'-0" x 2'-0" (ON TRUNK) 18" COAMING. ON AFTER BHD: STEEL HOUSE (SEE SKETCH) ✓

Particulars of Ventilators in exposed positions on freeboard and superstructure decks:—

## FORECASTLE DECK.

12 - 8" DIA. 18" x 24 COAMINGS (MUSHROOM TOP) TO STORES & ACCOMM. ETC.  
1 - 10" " 18" x 36 " (COWL) TO PUMP ROOM.  
2 - 12" " 36" x 38 " " " TO HOLD.  
1 - 12" " 36" x 38 " " " TO ACCOMM. ✓

## POOP DECK.

2 - 8" DIA. 20" x 32 COAMINGS (COWL) TO STORES. ✓

## BOAT DECK.

8 - 9" DIA. 19" x 30 COAMINGS (COWL) } TO ACCOMM.  
7 - 7" " 19" x 32 " } REFRIG. MCHY  
4 - 12" " 19" x 30 " } ETC.

2 - 20" " 30" x 30 " " " TO PUMP ROOM (ON CASING TOP). ✓

ALL COWL VENTS CLOSED BY MEANS OF WOOD PLUGS AND CANVAS COVERS.

Particulars of Air Pipes in exposed positions on freeboard, raised quarter, or superstructure decks:—

FORE. 4 - 4" DIA x 15" HIGH.  
POOP. 2 - 3" DIA x 10" ".

WOOD PLUGS SUPPLIED FOR CLOSING. ✓

Particulars of Gangway Cargo and Coaling Ports:—

NONE.

Particulars of Scuppers and Sanitary Discharge Pipes:—

STORM VALVES FITTED TO ALL OVERBOARD DISCHARGES ABOVE FREEBOARD DECK. ✓

Particulars of Side Scuttles:—

HINGED DEADLIGHTS FITTED (10" DIA) OF STRONG CONSTRUCTION. ✓

Vertical distance of Sill of lowest Side Scuttle above top of keel 24'-3".

Particulars of Guard Rails:—

DECK	RAILS	STANCHIONS	SPACED	APART
FORE DECK	3'-9"	HIGH	3 RAILS	4'-0" APART ✓
FREEBOARD	3'-6"	"	"	4'-0" " ✓
TRUNK TOP	3'-6"	"	"	5'-0" " ✓
POOP DECK	3'-6"	"	"	3'-6" " ✓

Particulars of Gangways, Lifelines, etc.:—

TRUNK TOP FORMS GANGWAY BETWEEN POOP, & FORECASTLE. ✓

## Particulars of Freeing Arrangements.

	Length of Bulwark	Height of Bulwark	Size of Freeing Ports	Number each side	Area each side	Rule area each side
After Well ...			OPEN RAILS. ✓			
Forward Well ...						

State position of each freeing port ... After Well:—

(F. and A. position and height above deck edge) Forward Well:—

State whether the freeing ports are fitted with shutters, bars, or rails, and give particulars of such:—

Additional area where sheer is less than standard.

# PARTICULARS OF PROTECTION TO OPENINGS, ETC.

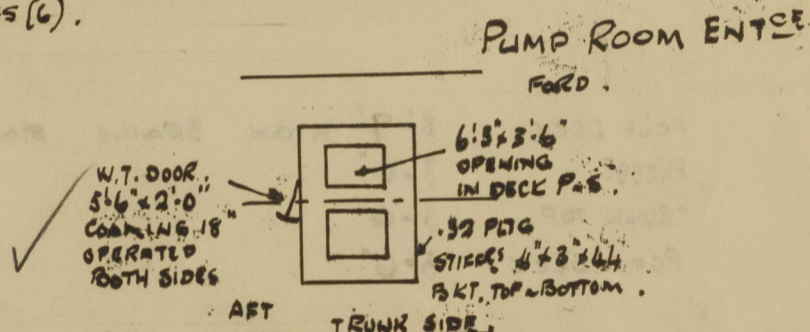
## HATCHWAYS ON FREEBOARD AND SUPERSTRUCTURE DECKS.

Description of Hatchway	12' 0" HATCHES TO BUNKER DECK	6' 0" HATCHES TO CARGO TRUNK DECK	FORECASTLE TO FORE HOLD	DUCK TO FORE PEAK	TO PUMP ROOM	20' BUNKERS TRUNK TOP	30' SETTLING TANKS TRUNK TOP	20' 9" DAM TRUNK TOP	STORE W.T. ON POOP
Dimensions of Hatchway	4'-0" DIA.	4'-0" DIA.	9'-0" x 10'-6"	2'-6" x 2'-6"	3'-6" x 8'-6"	2'-9" x 2'-9"	17' x 13'	21' x 15'	3'-0" x 2'-0"
COAMINGS	Height above Deck	5'-7"	9'	2'-9"	6"	2'-9"	9"	6"	40
	Thickness	.40	.40	.44	.50	.44	.40	.40	.40
	Sides	—	—	—	—	—	—	—	—
	Stiffeners	—	—	—	—	—	—	—	—
HATCH BEAMS	Brackets, Stays	—	—	—	—	—	—	—	—
	Number	—	—	—	—	—	—	—	—
	Spacing	—	—	—	—	—	—	—	—
	Scantling and Sketch	—	—	—	—	—	—	—	—
FORE AND AFTERS	Bearing Surface	—	—	—	—	—	—	—	—
	Number	—	—	—	—	—	—	—	—
	Spacing	—	—	—	—	—	—	—	—
	Unsupported Lengths	—	—	—	—	—	—	—	—
HATCH COVERS	Scantling* and Sketch	—	—	—	—	—	—	—	—
	Bearing Surface	—	—	—	—	—	—	—	—
	Material	STEEL	STEEL	STEEL	STEEL	STEEL	STEEL	STEEL	STEEL
	Thickness	.52	.52	.50	.50	.50	.50	.50	.50
HATCH COVERS	How fitted	HINGED	HINGED	HINGED	HINGED	HINGED	HINGED	HINGED	HINGED
	Bearing Surface	TOGGLES	TOGGLES	TOGGLES	TOGGLES	TOGGLES	TOGGLES	TOGGLES	TOGGLES
	Spacing of Cleats	(8)	(8)	(8)	(8)	(8)	(8)	(8)	(8)
	Number of Tarpaulins	—	—	—	—	—	—	—	—

\*Are wood fore and afters steel shod at all bearing surfaces?  
 Are battens and wedges efficient and in good condition?  
 Are tarpaulins in good condition and in accordance with rule requirements?  
 Are lashings provided in accordance with rule requirements?

Particulars of any special features:—

2 STRONG STEEL SKYLIGHTS ON FOLE DECK  
 3'-0" x 2'-0" COAMING 19", HINGED W.T. COVERS WITH TOGGLES (6).



Endorsement at first survey and at surveys for renewal of Certificate:—

The fittings and appliances are in accordance with the particulars shown on this form (or as now modified) and are in good condition.

