

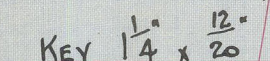
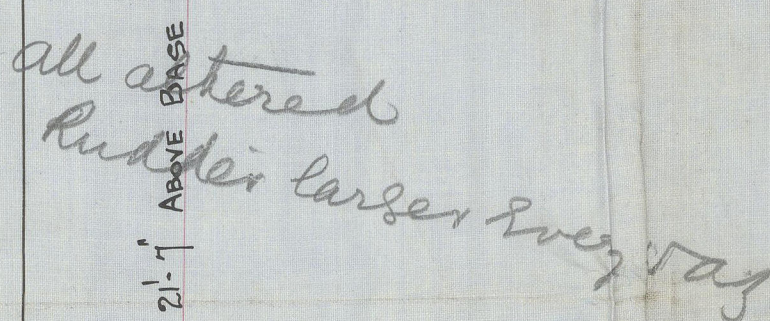
### FEATHER & GROOVE.

PLAN.

SKETCH OF COUPLING.

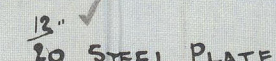
SCALE 3" = 1 FOOT.

SIX 1 $\frac{1}{4}$ " BOLTS. ✓



### SKETCH OF STEEL PINTLES.

SCALE 3" = 1 FOOT.



Rudder

Arms.  $4\frac{1}{2}'' \times 2''$  To  $2\frac{3}{4}'' \times \frac{7}{8}''$  SPACED.  $2'' - 2\frac{1}{2}''$  APART.  $1\frac{3}{8}''$

OF METAL ROUND STOCK. PINTLES.  $2\frac{3}{4}$  DIA<sup>R</sup>.

RIVETS 1" DIA. HOLES 1 1/8" SPACED. 5" C<sup>r</sup> TO C<sup>r</sup>.

## STERN FRAME & RUDDER.

S. S. No 124

SCALE { 1 INCH = 1 FOOT.

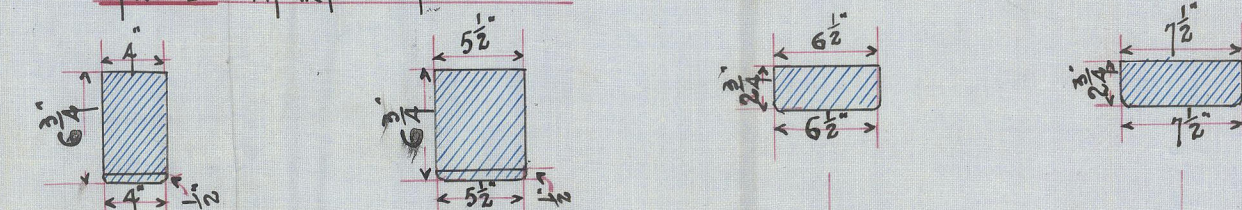
2<sup>ND</sup> NUMERAL = 9874.26 ✓

2229



STERN POST.

RIVETS | DIAM HOLES |  $\frac{1}{16}$ " DIAM  
SPACED | APART  $C^A$  TO  $C^B$  ✓



RIVET HOLES THRO' BARS  $1\frac{1}{16}$ " DIA<sup>R</sup>.  
RIVETS 1" DIA<sup>R</sup>.

STRAIGHT TAPER FROM 4" TO  $7\frac{1}{2}$ " IN 5'-9".

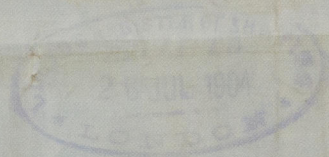


Alex SB Co's 124

"G. Player"

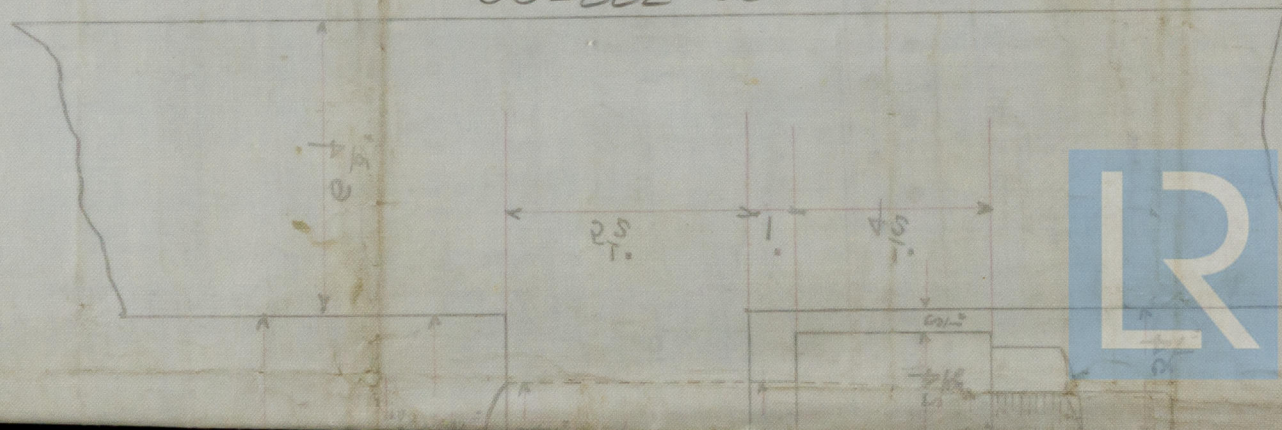
Glasgow npt no 2195-2

N.N. "CHEWBAY"



Stemframe & rudder.

002222-002228-0202



© 2021

Lloyd's Register  
Foundation