

S.S. No. 201-202

MIDSHIP SECTION

DIMS. 190' 0" B.P. x 29' 0" x 13' 8" M.L.

To CLASS 100 A.I. LLOYDS.

SCALE 1" = 1 FOOT

NUMERALS

TRANSVERSE NUMBER	(29 + 13.66)	=	42.66
LONGITUDINAL NUMBER	(29 + 13.66) 90	=	8105.40
2 To MAIN DECK	=	10.4	
4 To QUARTER DECK	=	14.66	
1/2 To MAIN DECK	=	13.9	
1/2 To QUARTER DECK	=	10.9	

FORECASTLE SCANTLINGS.

SIDE PLATING	.30
STRINGER ANGLE	5" x 3" x 26
PLATING	.30 .35 UNDER WINDLASS.
BEAMS	3" x 3" x 30 ANGLES ON EVERY FRAME.
BEAM Knees	12" x 30

EQUIPMENT

LONGITUDINAL NUMBER	=	8105.4
R.Q.D.	108×3.75	= 405.0
BRIDGE D ²	$10.5 \times 7.25 \times .75$	= 54.0
FOLE D ²	$24 \times 7 \times .75$	= 141.4
CASINGS	$58 \times 6.75 \times .5$	= 195.4
		8904.8

2 BOWER ANCHORS (Stockless)	EACH 19 CWT	54 1/2 CWT.
1 " " " "	16 1/4 CWT	
1 STREAM ANCHOR (COMMON)	5 1/2 CWT.	
180 FATHOMS	1 1/2" STUD CHAIN CABLE	
60 FATHOMS	3/4" STEEL STREAM WIRE	
90 FATHOMS	3" STEEL WIRE TOWLINE	
90 FATHOMS	EACH 5' 6" MANILA HAWSERS.	

NOTE. No KEDGE ANCHOR TO BE SUPPLIED.
CABLE SHORTENED AS PER CIRCULAR N^o 1304 19/12/17.

SECTION THROUGH MAIN DECK BULWARKS.

RIVETING

KEEL PLATE BUTTS	TREBLE STRAPS THROUGHOUT
SHELL PLATING BUTTS	TREBLE OVERLAPS FOR 1/2 L TO DOUBLE
MAIN + Q ² DECK STRINGER BUTTS	TREBLE OVERLAPS FOR 1/2 L TO DOUBLE
" " PLATING	SINGLE OVERLAPS (DOUBLE AT OPENINGS)
TANK CENTRE STRAKE BUTTS	DOUBLE OVERLAPS THROUGHOUT
TANK MARGIN BUTTS	" " " "
TANK TOP PLATING BUTTS	DOUBLE OVERLAPS FOR 1/2 L TO SINGLE.
CENTRE GIRDER BUTTS	DOUBLE OVERLAPS THROUGHOUT.
KEEL + SHELL PLATE EDGES	DOUBLE RIVETED LANDINGS.
DECK + TANK TOP EDGES	SINGLE RIVETED LANDINGS.
RIVETS TO BE 3/4" DIA THROUGHOUT VESSEL EXCEPT KEEL PLATE + upper shell stringers.	WHICH WILL BE 7/8" DIA.

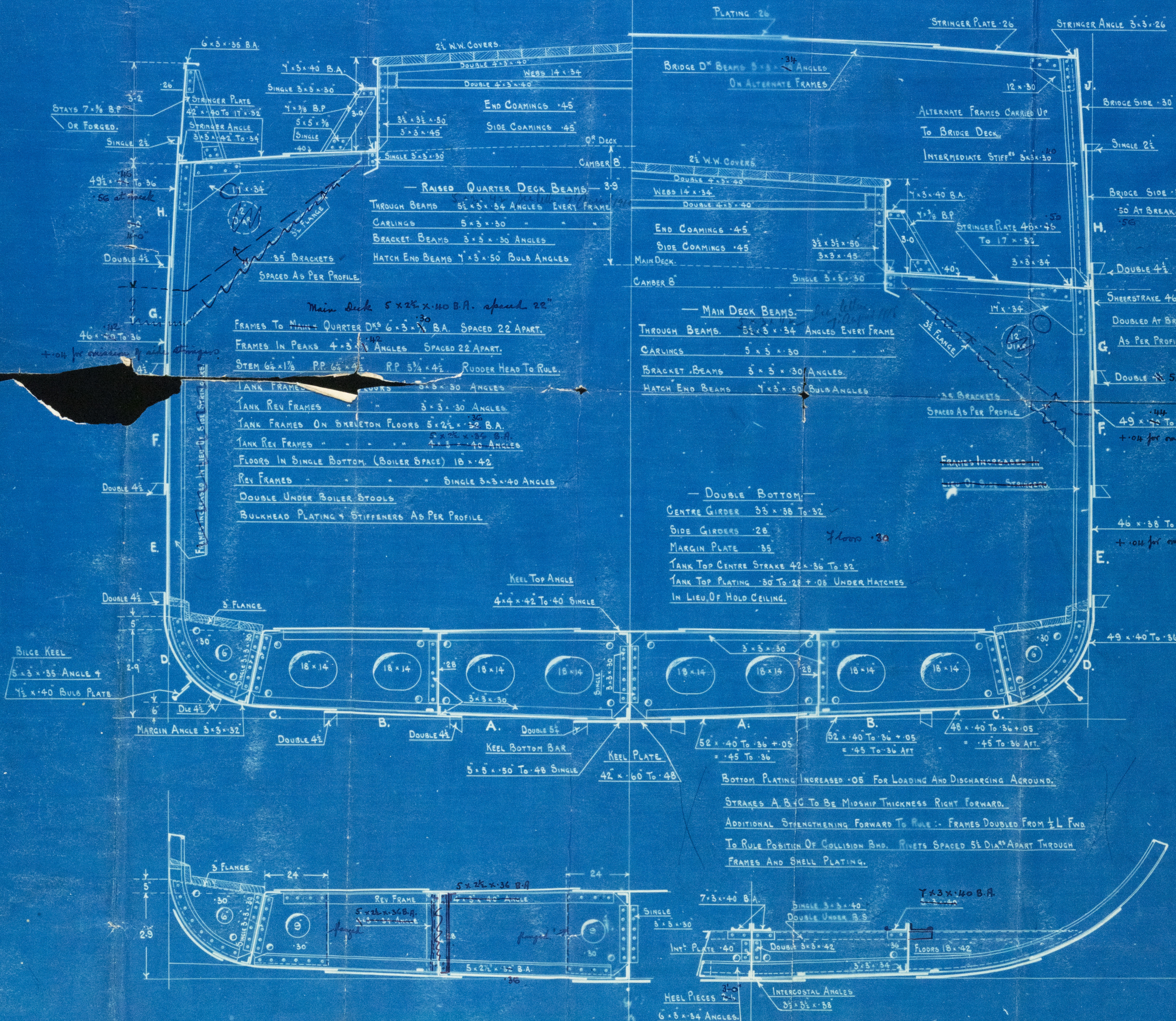
The North Shipbuilding & Engineering Coy. Ltd.

Geffrye Yard

Alma. N.B.

3 (38)
12-2

002241-002248-0116



SECTION THROUGH SKELETON FLOOR - ON EVERY THIRD FRAME

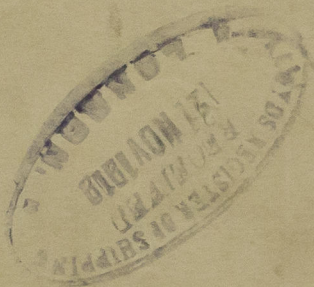
SECTION THROUGH BOILER ROOM - FRAME N^o 30

900-201-202

Midship Section

The Fort S. & C. L.

Alloa
Jeffrey's Yard

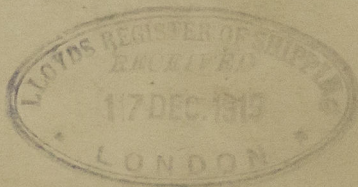


GLASGOW REPORT No. 39441

s/s Gooding

GLASGOW REPORT No. 39593

s/s Sunnyside



© 2020

Lloyd's Register
Foundation

002241-002248-0116