

2.12.13

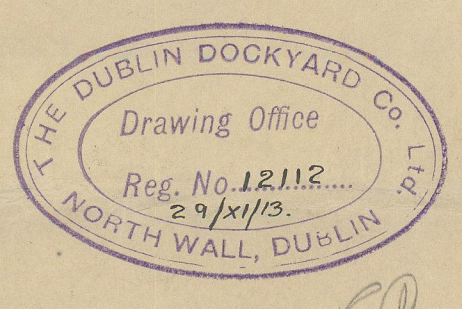
RUDDER & STEEL POST

S.S. N^o 85

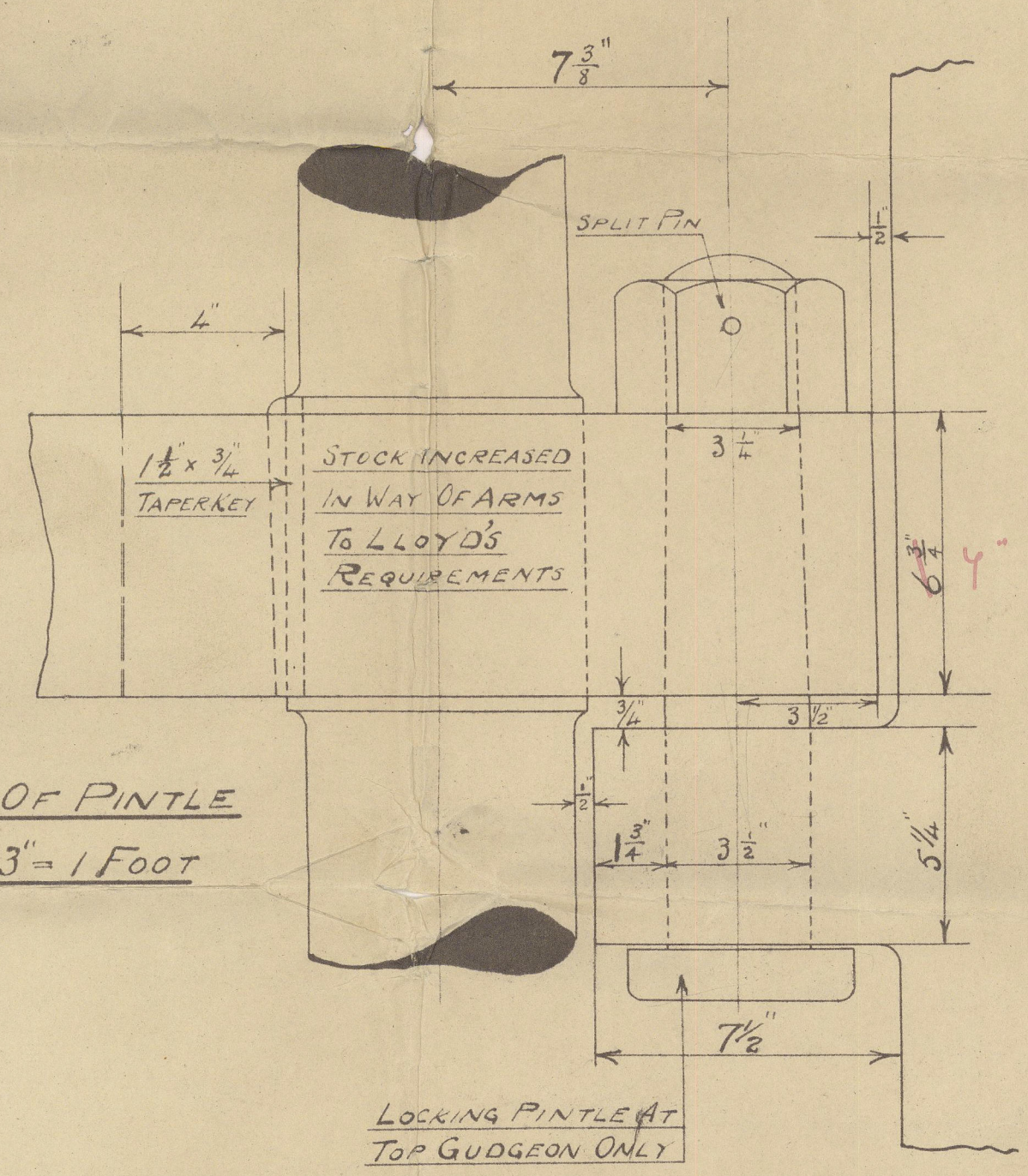
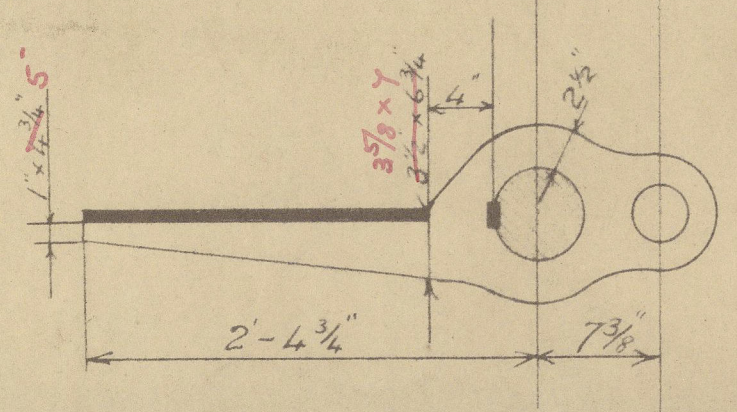
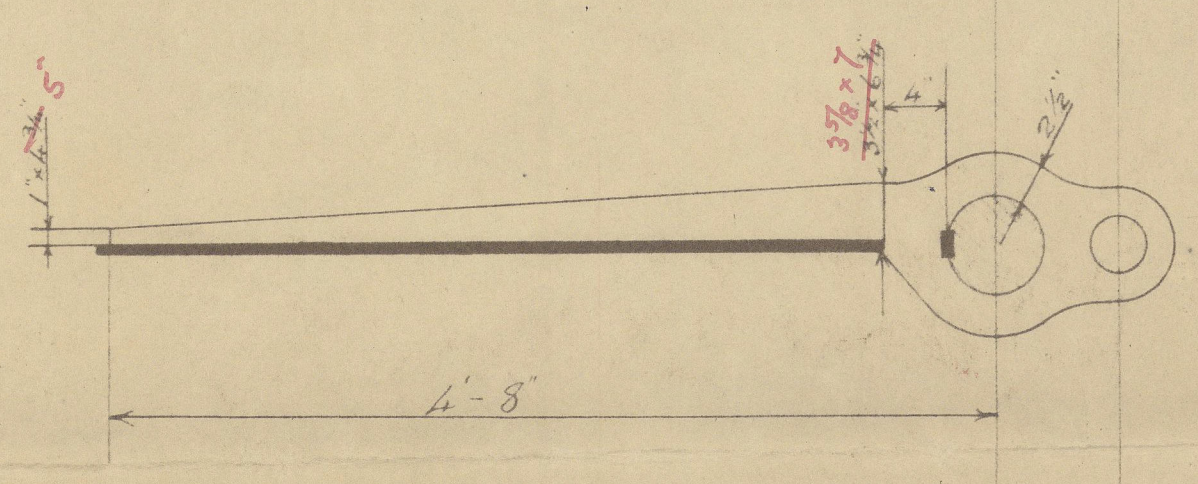
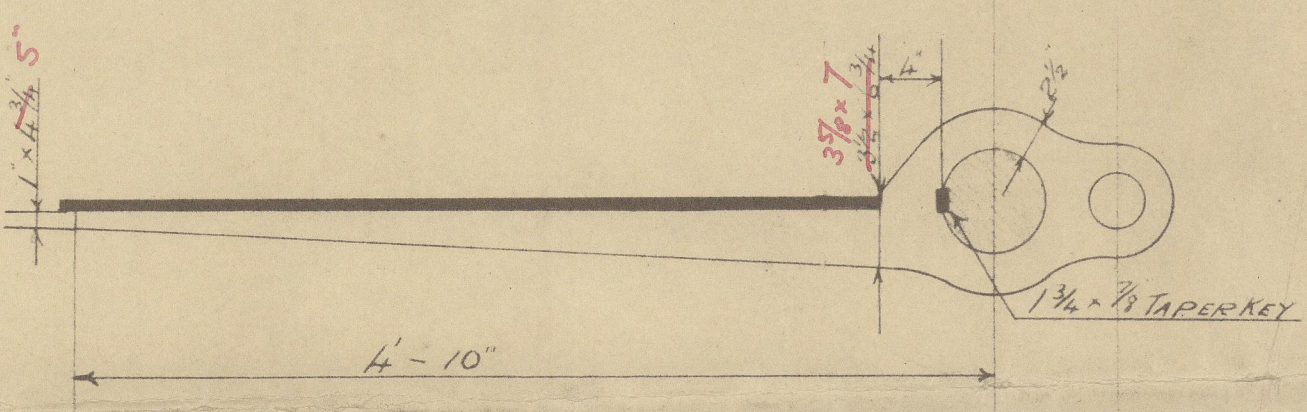
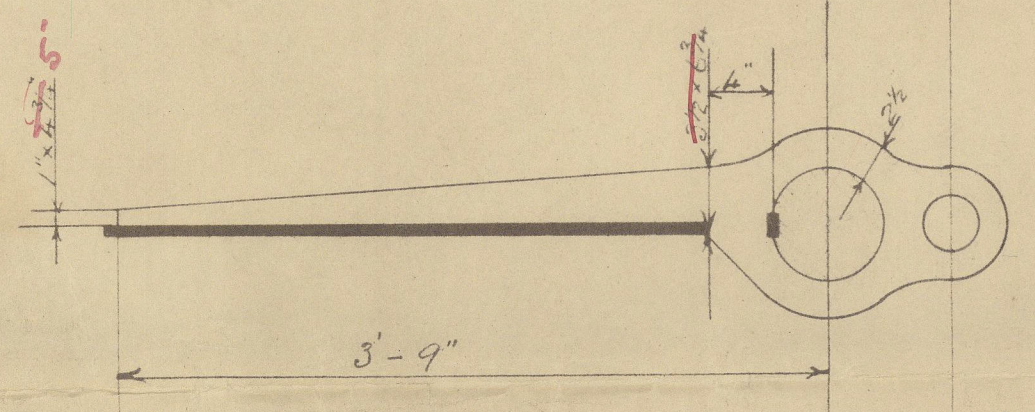
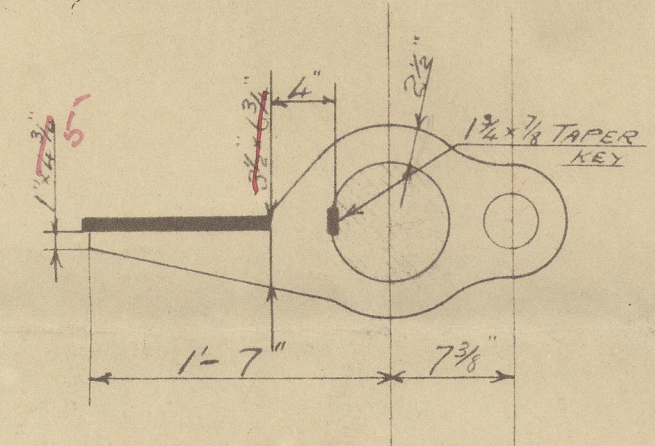
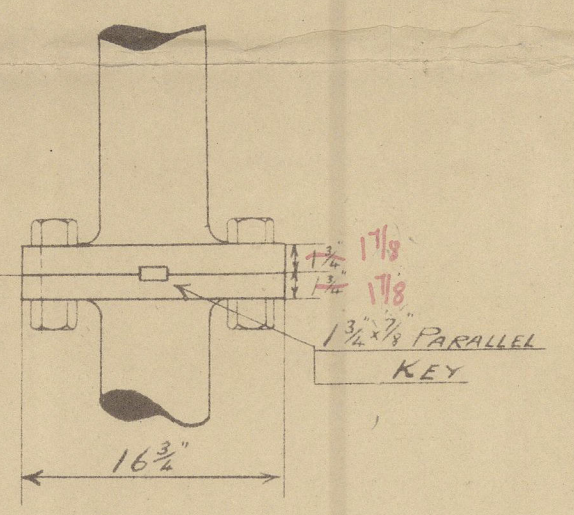
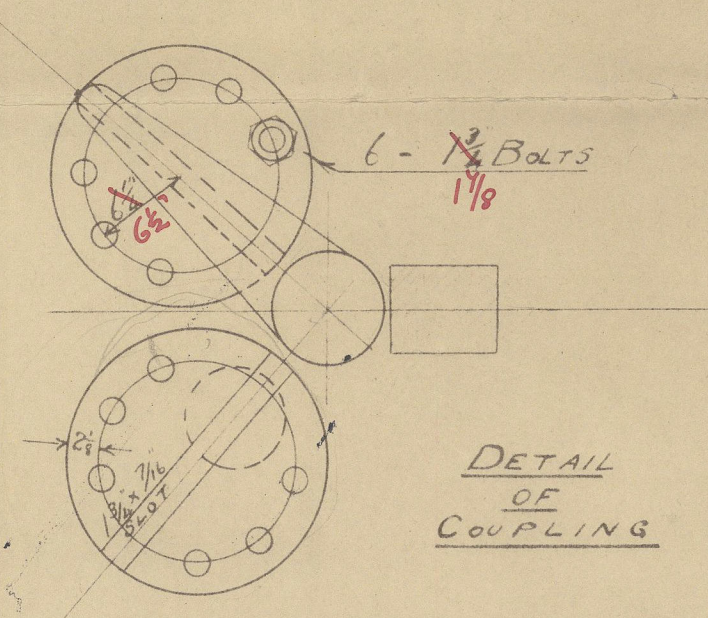
To LLOYD'S REQUIREMENTS

SCALE 1" = 1 FOOT

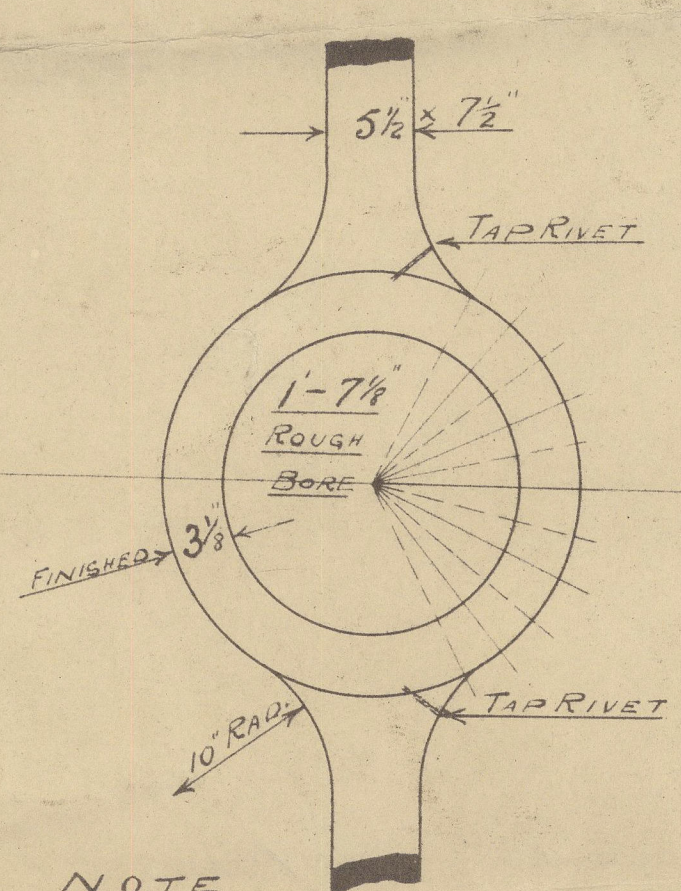
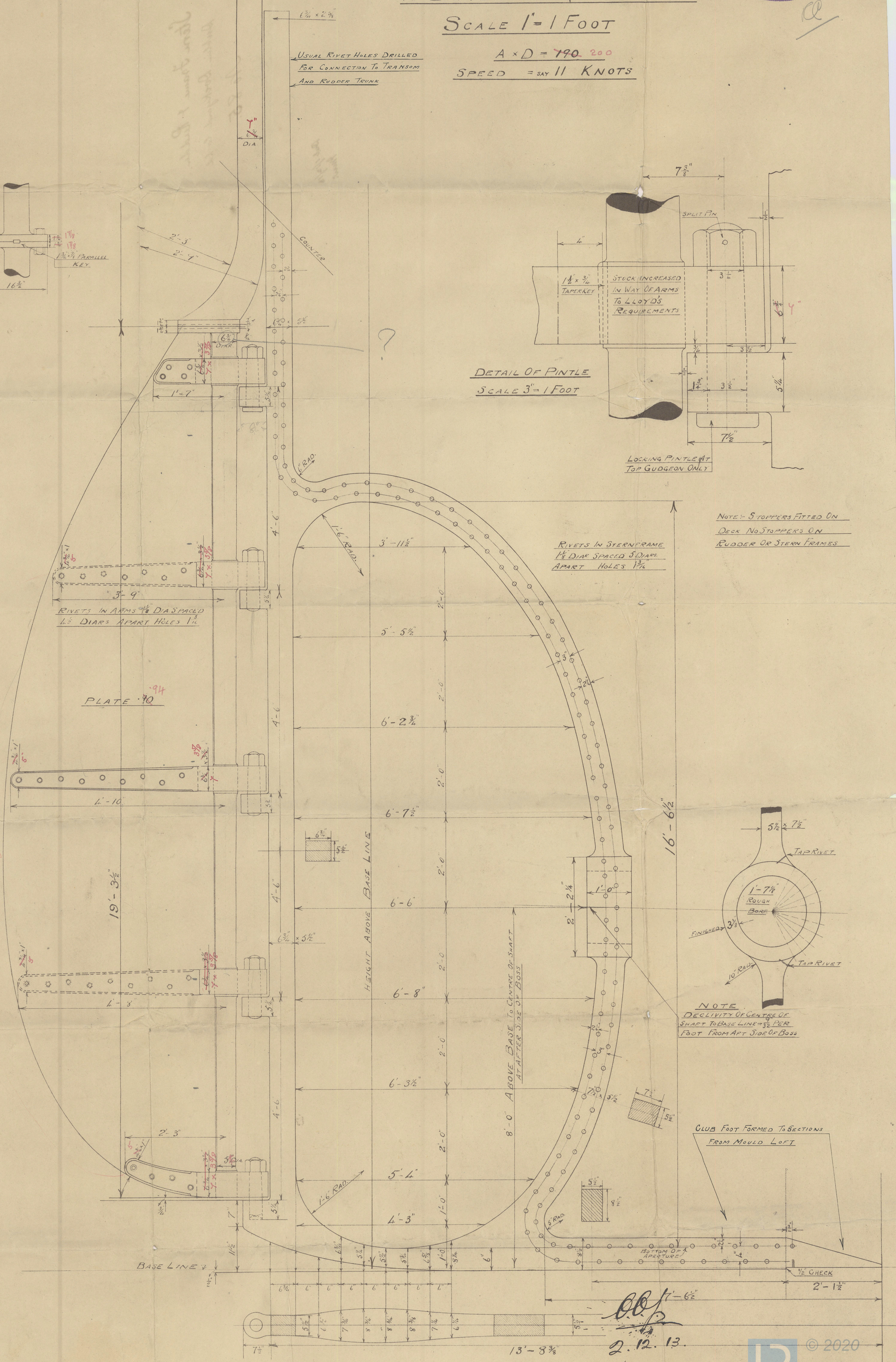
$A \times D = 790.200$
SPEED = SAY 11 KNOTS



cc



NOTE: STOPPERS FITTED ON
DECK NO STOPPERS ON
RUDDER OR STERN FRAMES



NOTE: DECLIVITY OF CENTRE OF
SHAFT TO BASE LINE 1/32 PER
FOOT FROM AFT SIDE OF BOSS

CLUB FOOT FORMED TO SECTIONS
FROM MOULD LEFT

2.12.13

Stern Frame & Rudder.

Dublin Dockyard Co Ltd

No 85.

S. J. Dineen

Dub. 34/11.

Dub 1/12/13
M.W.



© 2020

Lloyd's Register
Foundation

007249-002259-0050