

NOTE - SPACING OF RIVETS IN BEAMS & ENDOAPS TO RULE.
NO INCREASE IN DIA. OF RIVETS WHEN PLATES
MADE THICKER IN LIEU OF DOUBLING.

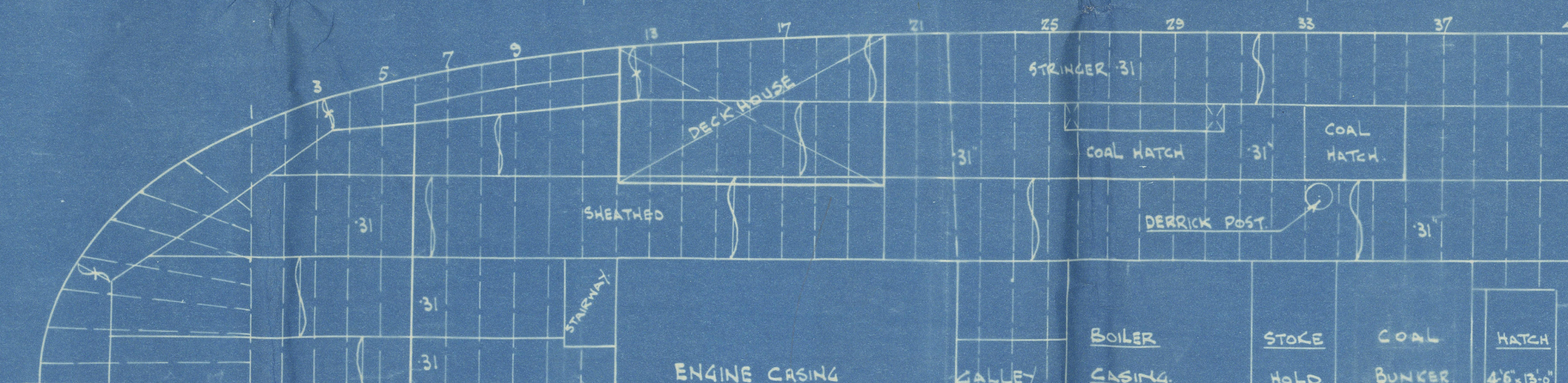
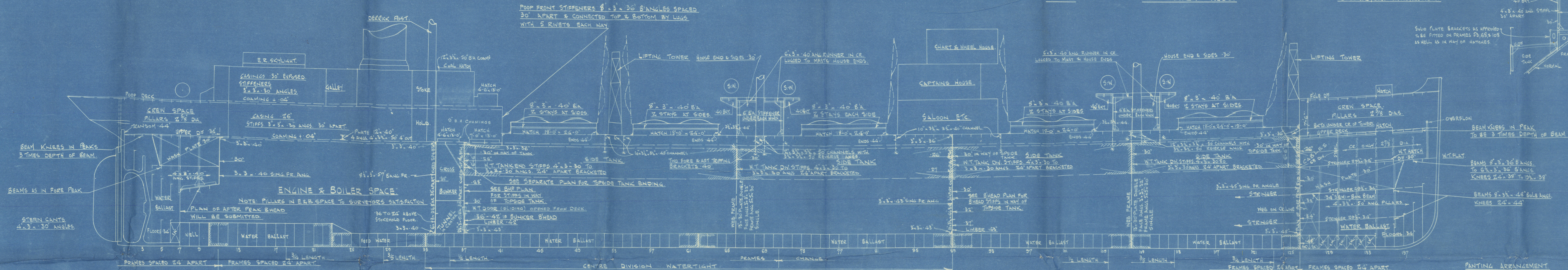
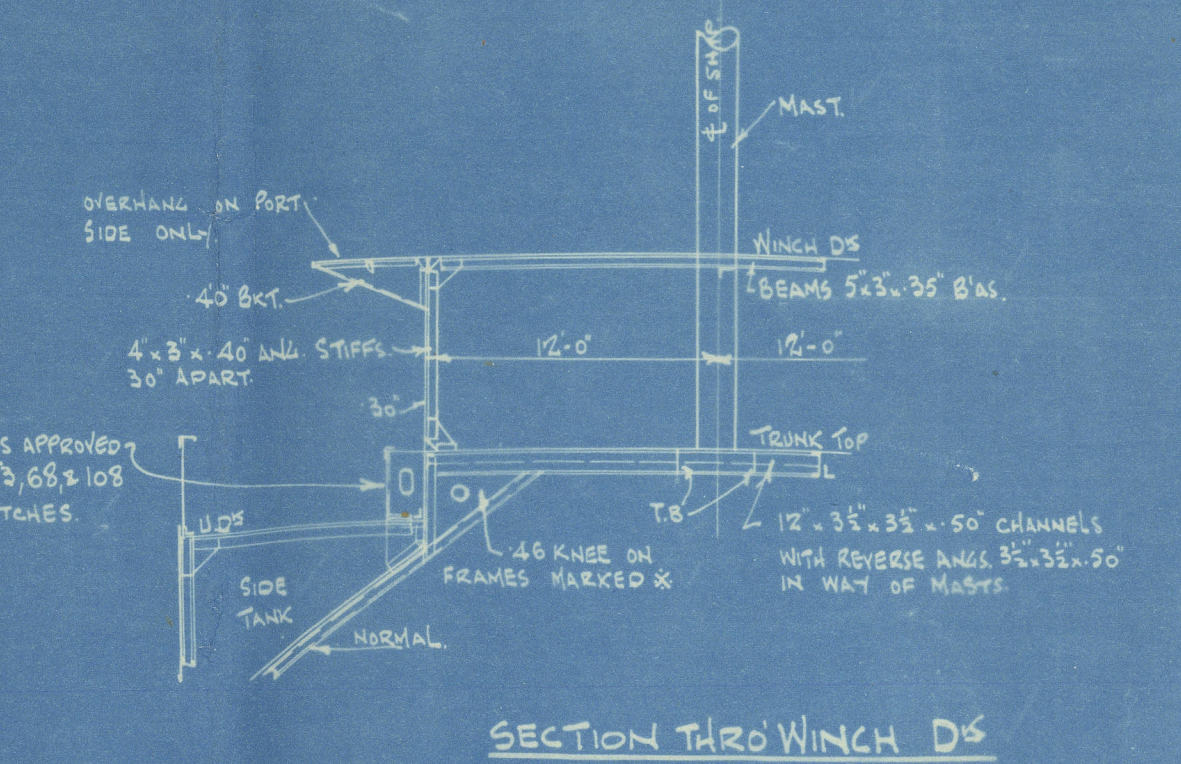
PROFILE AND DECK PLANS. (AS FITTED)

SCALE 1/4" = ONE FOOT
5.3 280'-0" B.P. 44'-1" 21'-1 1/2" M⁴⁰

NOTE - NO PILLARS FITTED AT SIDES OR CORNERS OF HATCHES.

NOTE - HULL CORRUGATED HATCH COVERS
FITTED NO HATCH WEBS.

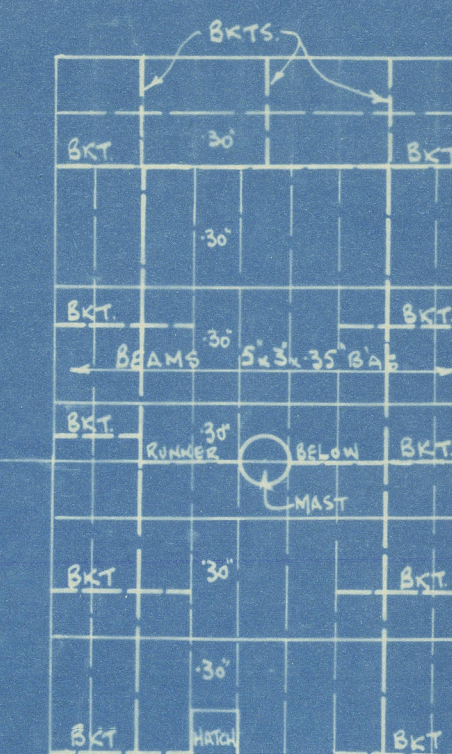
NOTE - WINDLASS WINCHES STEERING GEAR
LIFTING TOWERS, MASTS ETC SUPPORTED
TO SURVEYORS SATISFACTION.



POOP DECK BEAM RIVETING
STRONGER 2 OF PLATING TO BEAMS 3/4 RIVS 5 1/2 PITCH.

POOP DECK

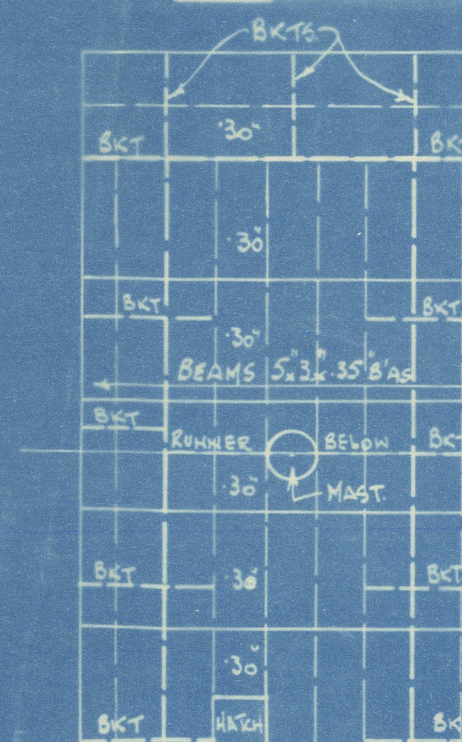
UPPER DECK
BUTTS OF STRINGER TRIPLE RIVETED OVERLAPS
DECK PLATING DOUBLE RIVETED OVERLAPS
TO SINGLE AT ENDS
ALL BUTTS OF UPPER DS PLATING ARE OVERLAPPED
ALL BEAMS " " " " SINGLE RIVETED.



SUPPORTED AT CENTRE

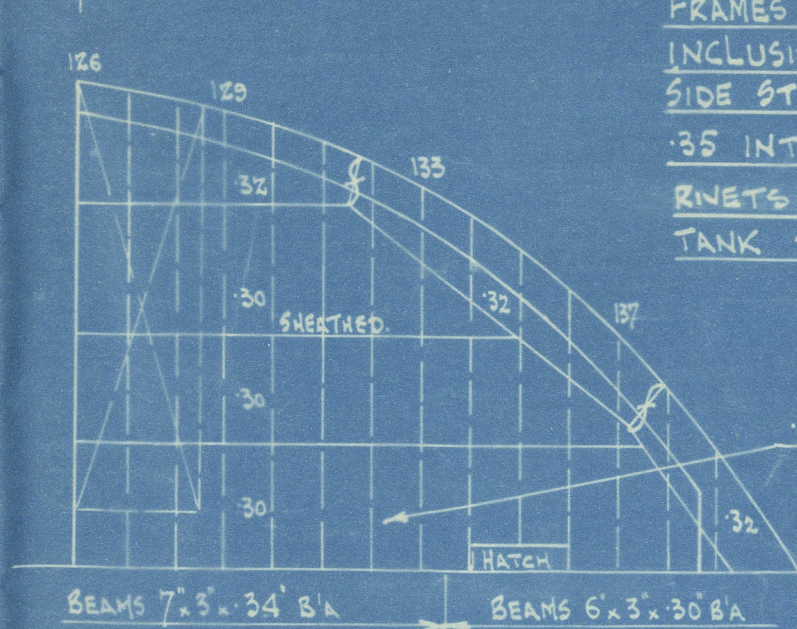
UPPER DECK BEAM RIVETING
STRINGER TO BEAMS 1/8 RIVS 6 1/2 PITCH FROM 33 TO 108
REMAINDER 3/4 RIVETS 5 1/2 PITCH
DECK PLATING TO BEAMS 3/4 RIVETS 5 1/2 PITCH ALL FORE & AFT.

NOTE - BOTTOM STRENGTHENED FORWARD AS PER
RULE



SUPPORTED AT CENTRE

PANTING ARRANGEMENT
FRAMES 3/4 x 3 x 40 BULB ANGLES FROM 119 TO 125
INCLUSIVE TO UNDERSIDE OF SIDE TANK
SIDE STRINGER FACE ANGLE 4 1/2 x 3 x 38 WITH
35 INTER PLATES FITTED IN SHORT LENGTHS BETWEEN FRAMES.
RIVETS THREE FRAMES SHELL 5 1/2 DIA. APART. RIVETS IN
TANK SIDE BKT. GUSSETS & ANGLES INCREASED AS PER RULES.



FORECASTLE DECK
STRINGER & DS PLATING TO BEAMS 3/4 RIVS 5 1/2 PITCH.

PLAN NO. 6
DRAWN BY W.G.P.
CHECKED BY J.W.B.

W. GRAY & CO. LIMITED
8/6/25.
WEST HARTLEPOOL

974-5-6

974-5-6

106 ADDED TO U⁹ D⁹ (NOT STRINGERS)
FOR OWNERS.

MESS^{RS} W GRAY & CO

Nº 974

PROFILE & DECKS (AS FITTED)

Kartiki : Hpl Rpt 16373.



© 2020

Lloyd's Register
Foundation

002249-002259-0124