

WELLS - JUN. 1970

Lloyd's Register of British & Foreign Shipping. 25877.

SURVEYS FOR FREEBOARD.

Rudder Head $12\frac{1}{2}$ " dia. Clearance $\frac{7}{8}$ "

PARTICULARS IN RESPECT OF STEAM SHIPS HAVING SPAR OR
AWNING DECKS.

Port of Survey NEWCASTLE-ON-TYNE

Date of Survey 3rd June 1918

Name of Surveyor *Alex. Munro*

Complete Shelter Deck without Lonnage opening (Cruiser Stain)

Ship's Name.	Port of Registry and Nationality.	Official Number.	Gross Tonnage.	Date of Build.	Particulars of Classification.
S/S "KENT" Menas Palamos S/S + Iron Co No 867 Number in Register Book ✓ 27 Sub	LONDON British	142611.	✓	1918	100 FT. Shelter Deck with Freeboard (Contemplated)

Registered dimensions from Ship's Register.	LENGTH.	BREADTH.	DEPTH.	UNDER DECK Tonnage.
	460.60	62.80	26.90 U.D. 34.90 S.D.	6204.54
Length on LOADLINE	460.00	Frame Depth 02 Rule " $\frac{32}{82}$ = .58 ✓	Ceiling + .20 ✓ Sheer + .439 ✓ Tank top drops $\frac{32}{82}$ at tank side ✓ + .35 ✓ Ceiling over timbers & under hatchways	Peak } Incl. Tanks } 2007.0 tons 2007
CORRECTED DIMENSIONS.	460.00	62.22 ✓	27.89 ✓	6204.54

Moulded Depth as measured 29'-9" Main Deck.

" " " " " "34'-9"..... ~~Spar or Living~~ SHELTER Deck.

Co-efficient of fineness74	77%	.80
Any modification necessary } [Para. 4 (a) to (e)] }	.02	C. A. B	
Co-efficient as corrected75		78% वा

Allowance for strength in excess of Lloyd's rules = 38

State particulars— Constructed with Built Angle Framing
Three Steel Decks.
Six Watertight Bulkheads ~~all~~^{and} to Upper
Deck, ~~excepting~~ ^{one} Peak Bulkhead which
extends to Shelter Deck.
No Lounage opening in Shelter Deck.
No sidelights, scuppers or other openings
through sides to effect the load line

CORRECTION FOR LENGTH:—

Length of Ship on Load Line.... 460.00 -
 Length in Table 357.00 -
 Difference..... 103.00
 Correction for 10ft..... ~~.88~~
 × Difference ÷ 10 = 82.40
 8.24 = +8 $\frac{1}{2}$ ✓

Height of 'Tween Decks..... $8'-0''$
(From top of beam to top of beam at side)
Correction for Height of 'Tween Decks in Spar-decked Ships..... ✓

Freeboard Table B C	4' - 2 $\frac{3}{4}$	✓
Correction for Length.....	+ 8 $\frac{1}{4}$	✓
	4 - 11	✓
Correction for Height of 'Tween Decks in Spar-decked Ships.....	8 - 0	✓
	12 - 11	✓
Correction for Strength in excess of Lloyd's rules.....	3 - 2	✓
(Table A Limit-)	9 - 9	
Correction for Iron Deck if required.....	- 3 $\frac{1}{2}$	
	9 - 5 $\frac{1}{2}$	
Other Corrections (if any).....		

Winter Freeboard	9 - 5 $\frac{1}{2}$
Summer Freeboard	8 - 10 $\frac{1}{2}$
Indian Summer Freeboard.....	8 - 3 $\frac{1}{2}$
N. A. Winter Freeboard.....	✓

Correction necessary because clearside amidships measured
in accordance with the Statute is not taken at inter-
section of the ~~wood~~ or iron deck with side } $1\frac{3}{4}$ "

Winter Freeboard from Deck Line	9-7 $\frac{1}{4}$
Summer " " "	9-0 $\frac{1}{4}$
Indian Summer " "	8-5 $\frac{1}{4}$

54-11 N.A. Winter, " "

FREEBOARD recommended amidships from centre of Disc to top of Statutory Deck Line, ~~Wood~~ (Iron) Deck :—

[illegible]

NOTE.—All vessels equal in strength to Lloyd's Spar-decked rule, or which, although in excess of that rule, do not come up to Lloyd's requirements for Ships of full scantlings to the upper deck, are to be considered as Spar-decked Ships, the freeboard for which will vary with their strength.

All vessels equal in strength to Lloyd's Awning-decked rule, or which, although in excess of that rule, do not come up to Lloyd's requirements for a Spar-decked Vessel, are to be considered as Awning-decked Ships, the freeboard for which will vary with their strength.

* If the frames, skin planking, or ceiling are of unusual thickness the breadth of vessel to inside of ceiling should be reported if possible.

1m, 1, 12. T.

Lloyd's [P.T.O.] Register

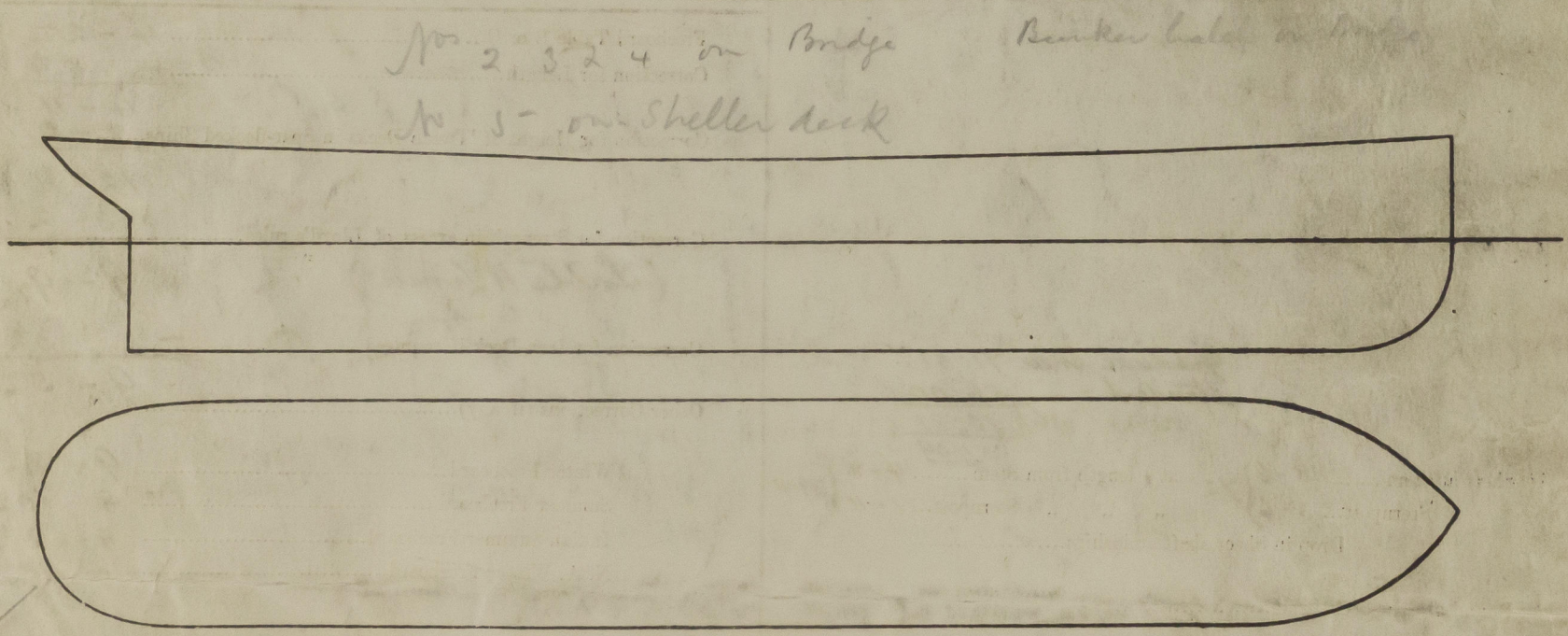
MAKING REPORT
RECEIVED 25-6-18

002260-002268-0005

Do all the Frames extend to the top Height in the ^{Shelter} ~~Span~~ deck? *Yes*
 Do all the Frames extend to the top height in the Poop? *Yes*
 To what height do the Reverse Frames extend? *Bulb Angle Frames*
 Has the Poop an efficient Iron Bulkhead at the fore end? *Yes*
 Give particulars of the means for closing the openings in Bulkhead *✓*
 Is the Poop connected with the Bridge House? *✓*
 Give particulars of the means for closing the openings in Bulkhead *No Openings*
 What is the thickness of the Bridge Front plating? *.40* and Coaming plate? *.44*
 Give scantlings and spacing of the Stiffeners *9 x 3 1/2 x .64 Bulb Angles spaced 30" apart*
 Are bracket plates fitted at each end of the Stiffeners? *Yes* Are hor'l. brackets fitted connecting Bridge Bulk'd. with Bulwarks? *Yes*
 Has the Bridge House an efficient Iron Bulkhead at the after end? *Yes*
 How are the openings closed? *Storm boards fitted in riveted channels full height*
 Is the Forecastle at least as high as the main or top-gallant rail? *Yes* Has the Forecastle an efficient Iron or Wood Bulk'd. at after end? *Yes*
 Are the Engine and Boiler openings covered by a Bridge, Poop, or enclosed by a Strong Iron or Steel Deckhouse? *Bridge Deck*
 If the openings are not so protected are the exposed parts of the Casings efficiently constructed? *✓*
 Give thickness of plating; scantlings and spacing of Stiffeners *✓*
 What is the height of the exposed Casings? *✓* Are suitable means provided for closing all openings in them in bad weather? *✓*
 Are the Weather Deck Hatchways efficiently constructed and at least equal to the requirements of Section 28 of the Rules for 1904-5? Give particulars below:— *Yes*

Position and Size.		No. 1 - 27-0 x 20-0		No. 2 - 32-1 x 20-0		3-4+5-27-6 x 20-0		Bunker Hatch 13-9 x 20-0		Ship.	Rule.
Item.		Ship.	Rule.	Ship.	Rule.	Ship.	Rule.	Ship.	Rule.		
COAMING.	Height above top of DECK	2-6	2-6	2-6	2-6	2-6	2-6	2-6	2-6		
	Sides.....	.44	.44	.44	.44	.44	.44	.44	.44		
	Thickness { Ends.....	.44	.44	.44	.44	.44	.44	.44	.44		
SHIFTING BEAMS OR WEB PLATES.	Number	5	5	6	6	5	5	2	2		
	Section and Scantlings	4 x 3 x .44 Double		16 lb 13 lb 12 lb 11 lb 10 lb 9 lb 8 lb 7 lb 6 lb 5 lb 4 lb 3 lb 2 lb 1 lb		16 lb 12 lb 11 lb 10 lb 9 lb 8 lb 7 lb 6 lb 5 lb 4 lb 3 lb 2 lb 1 lb		16 lb 11 lb 10 lb 9 lb 8 lb 7 lb 6 lb 5 lb 4 lb 3 lb 2 lb 1 lb			
	Material	Steel		Angle		Angle		Angle			
* FORE AND AFTERS.	Number	Nil		Nil		Nil		Nil			
	Section and Scantlings	Nil		Nil		Nil		Nil			
	Material	Nil		Nil		Nil		Nil			
HATCHES Thickness		3	3	3	3	3	3	3	3		
Remarks.....											

* When the Fore and Afters are of wood the depth should be stated from the underside of the hatches.
 (If the sill of the lowest side scuttle will be less than 6 inches above the Indian Summer Load Line if assigned under the tables, state vertical distance from top of deck at side amidships to lower edge of lowest side scuttle.)



Show hereon line of Floors or Tank Top with position of any Breaks in same; also height of Peak Tank tops, &c., &c.

State any special features in the construction of the Vessel *The vessel is fitted with Cruiser Stem, and is*
Enclosed in the No. 1-2-3+4 Lower Holds, and No. 1-2-3-4+5 Lower Decks.
The approved plans of Midship Section, Profile and Decks are also forwarded for reference.

Owners
 „ Address
 Fee £ 8 : 8 : — Received by me