

STERN & RUDDER

20.1.20.

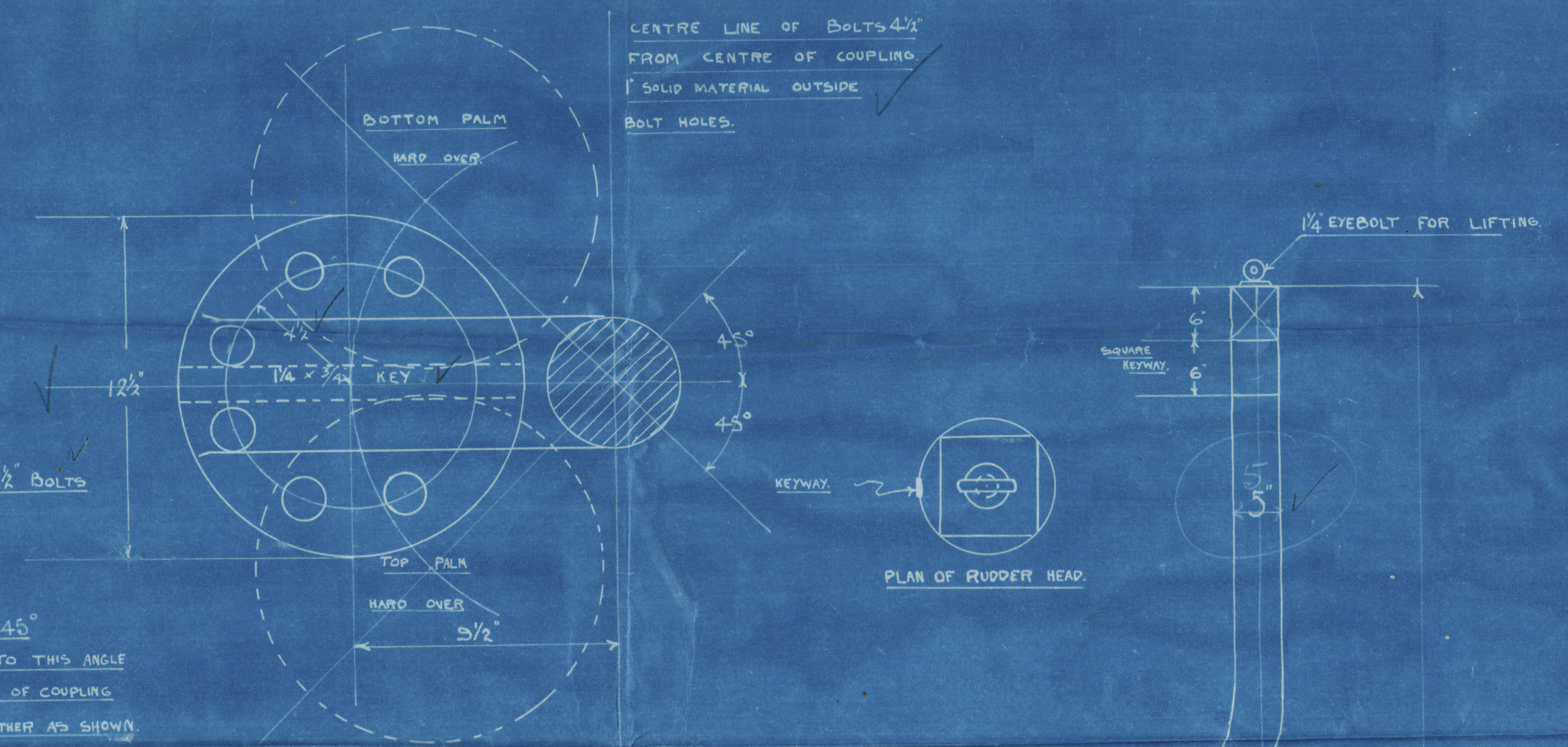
STERN & RUDDER

# STERN & RUDDER.

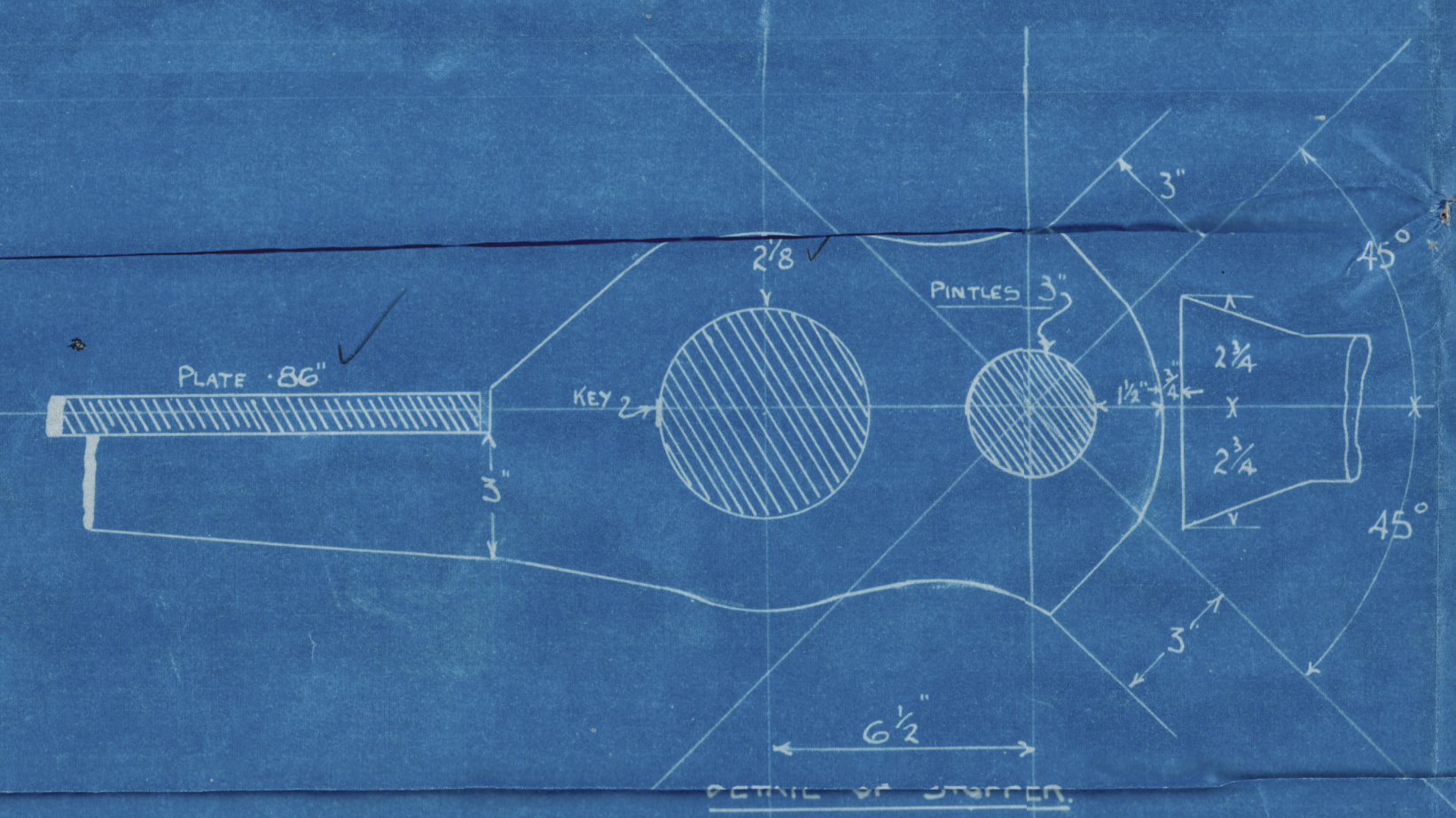
Nº 747.

SCALE. ONE INCH=ONE FOOT.

FOR EXAMINATION TO  
H.M.S. ROYAL NAVAL  
ENGINEERING SCHOOL  
DATE 12/1/20

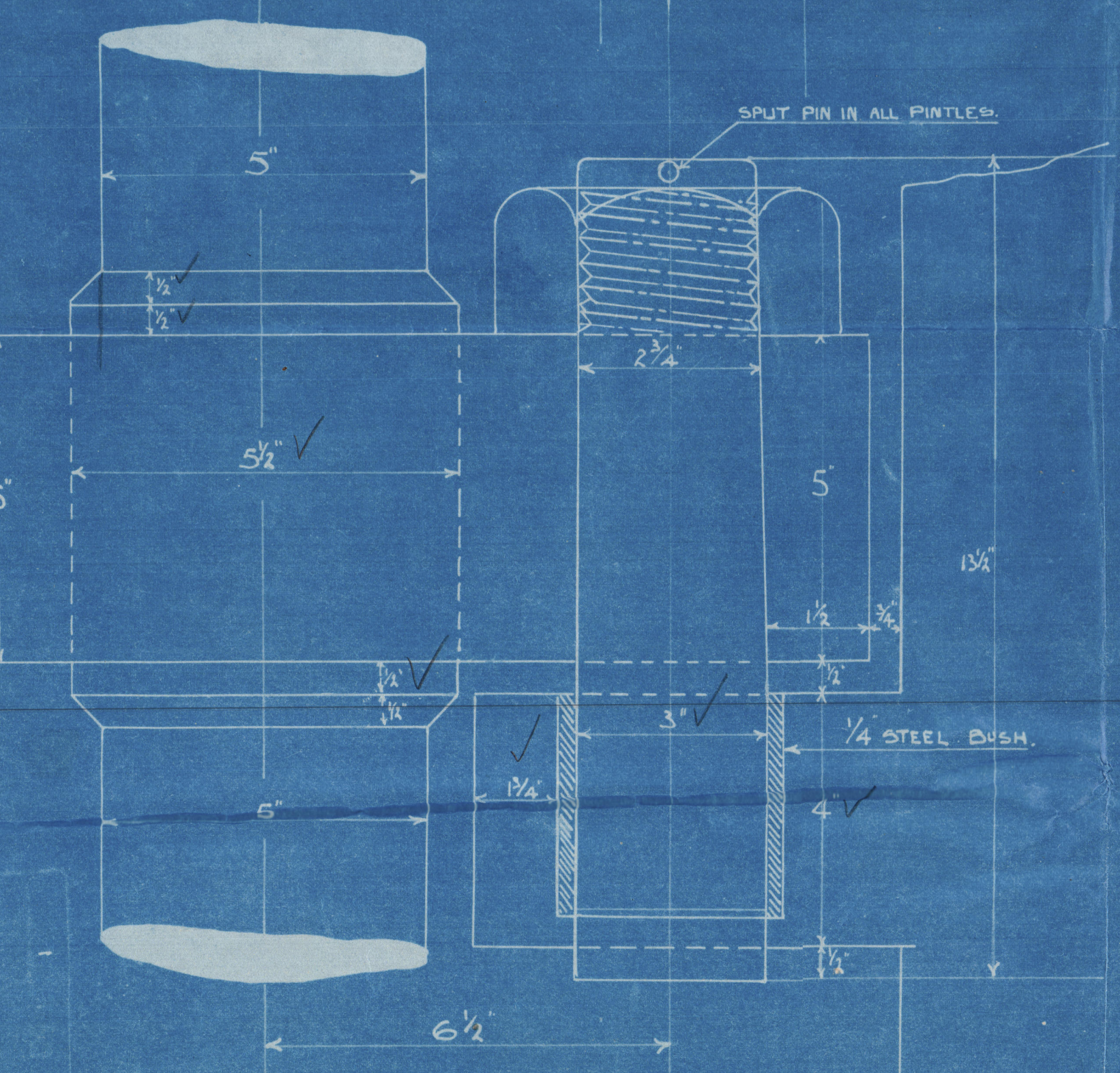


DETAIL OF COUPLING.



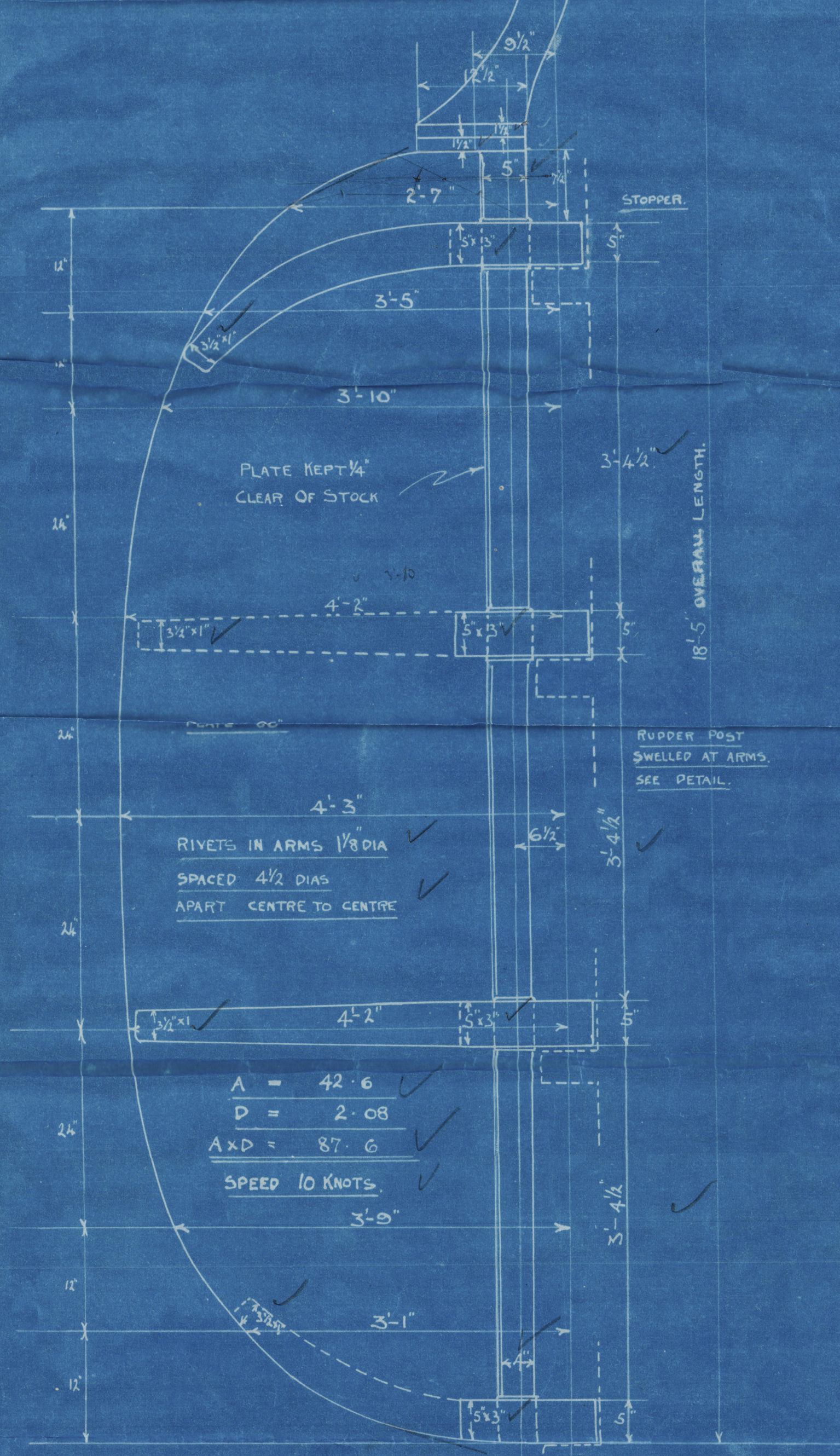
DETAIL OF ORDINARY ARM

SCALE 3 INCH.

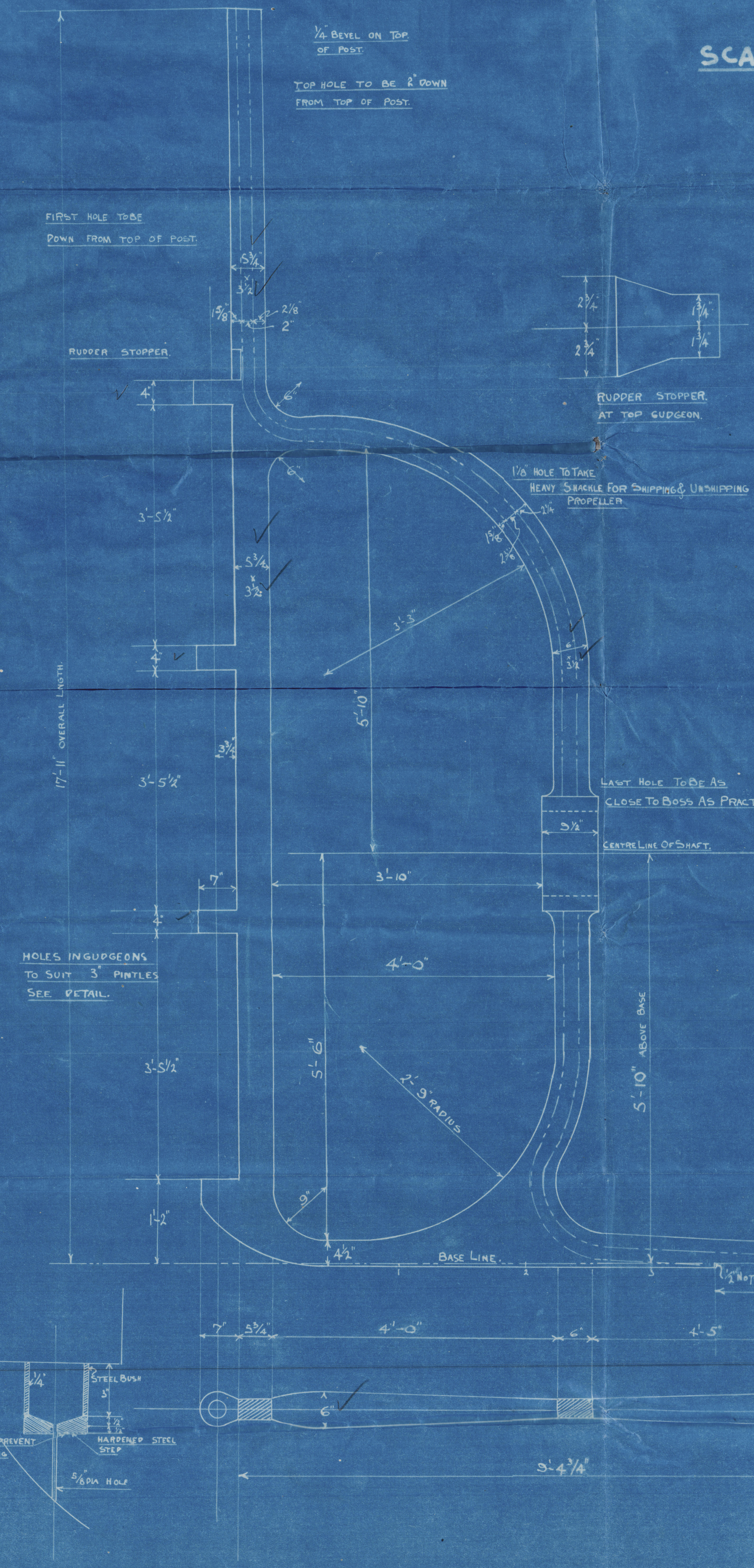


DETAIL OF PINTLES

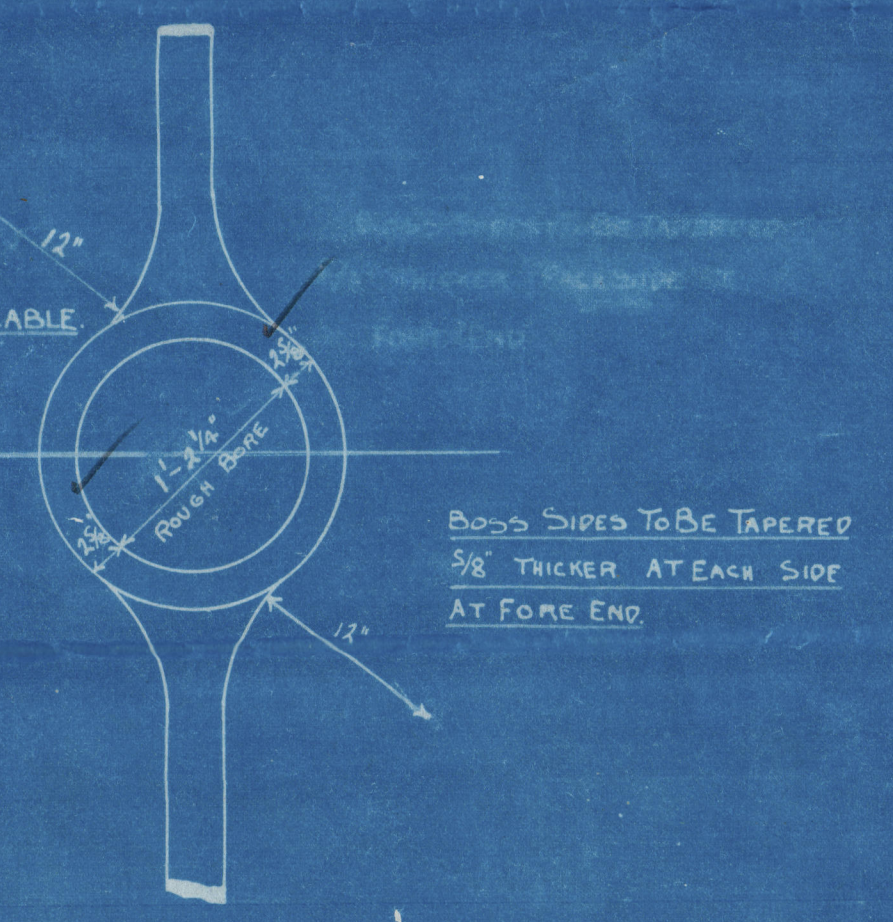
SCALE = HALF SIZE



COLLAR ON BOTTOM OF TOP PINTLE.



HOLES 1" DIA 5" PITCH TOLLOYS TESTS.



NOTE - CORRECT TEMPLATE OR  
SKETCH GIVING DIMENSIONS  
WILL BE SUPPLIED LATER.

LR

Lloyd's Register  
Foundation

002269-002278-0084



STERNFRAMEY RUDDER

COCHRANE & SONS. LTD

No 747

ss. Margaret Lockington's hull report

No 92416

33



© 2021

Lloyd's Register

002269-002278-0084