

MIDSHIP SECTION

STEEL SCREW STEAMER

N^o 747.

DIMNS 152'-0" BP. x 25'-0" MLD. x 12'-0" MLD.

TO CLASS LLOYDS 100A.1.

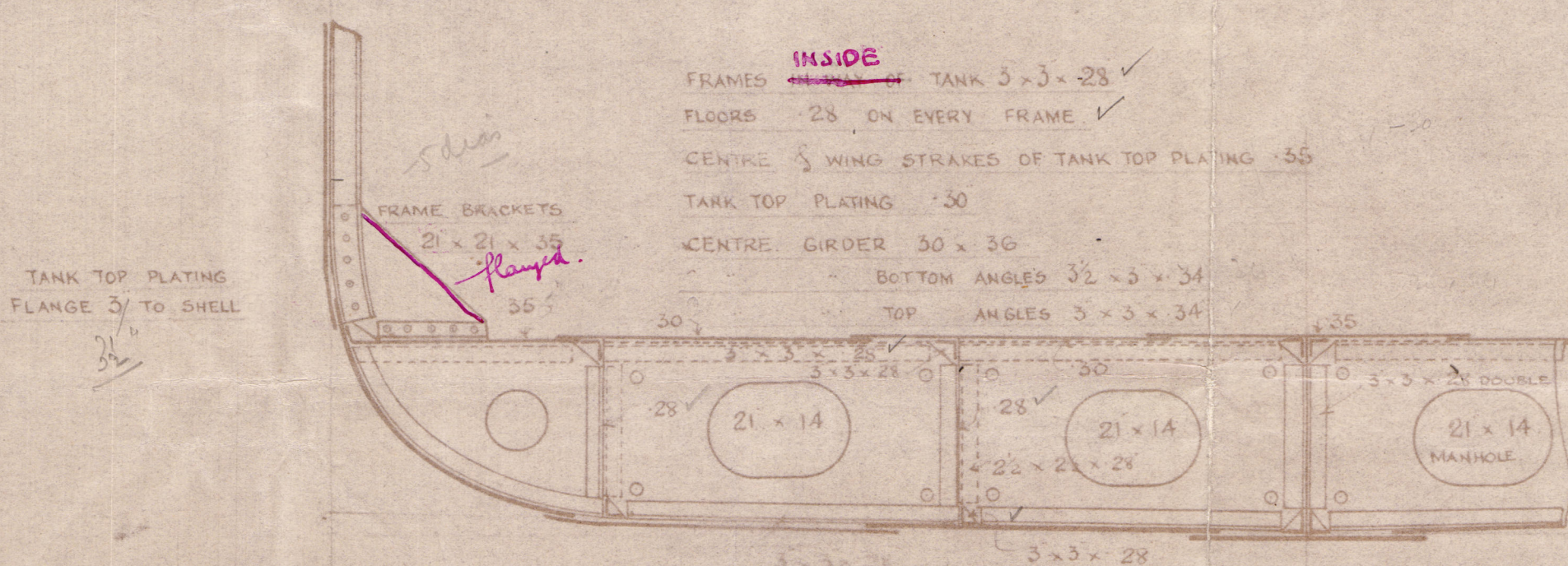
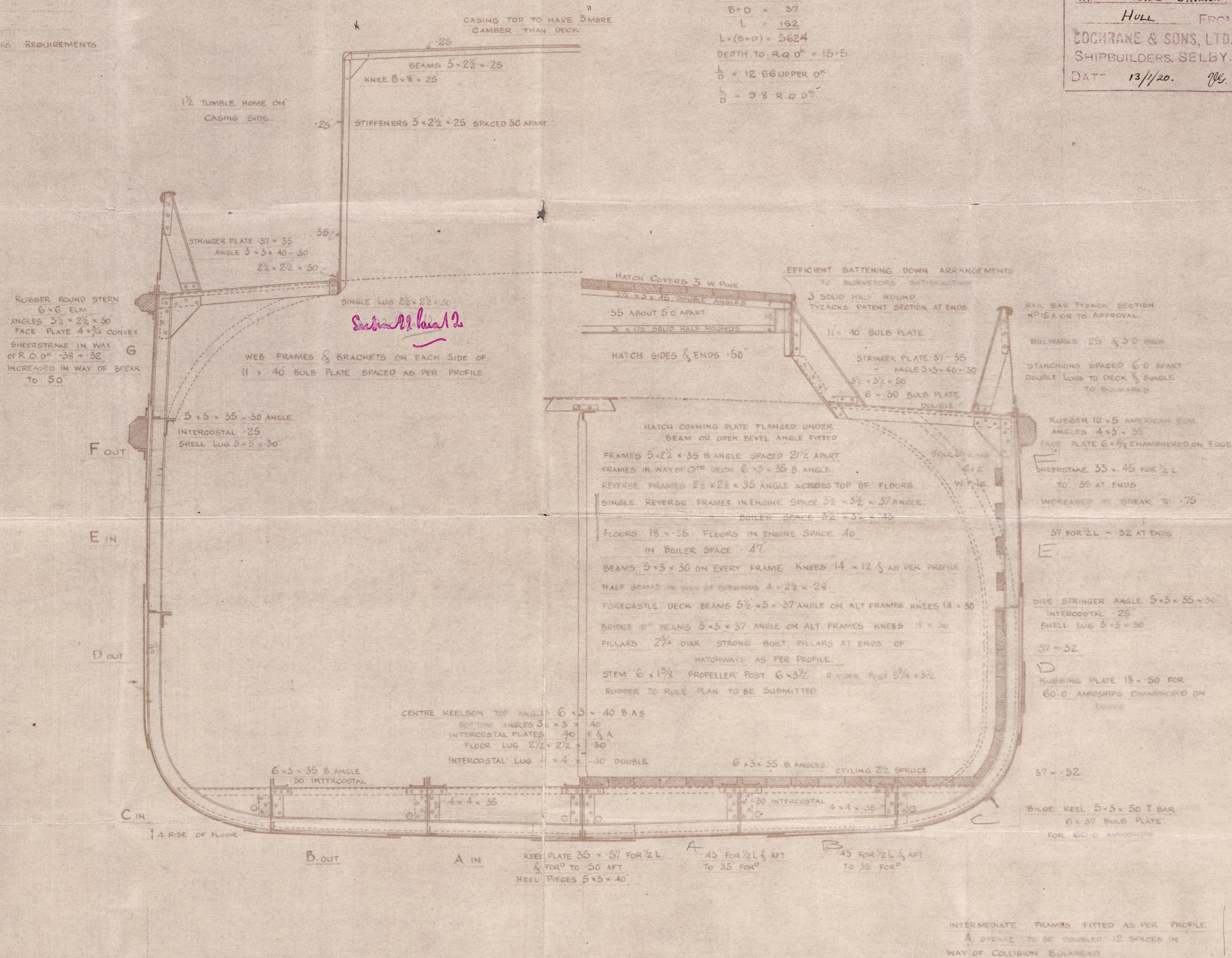
SCALE 1/2 INCH.

EQUIPMENT		
L x (B+D)	5624	
R O D 86.5 x 3.5	302.75	
BRIDGE DK 90 x 7 x 3/4	47.25	
SOLE DK 25.55 x 7 x 3/4	152.90	
CASING 47.5 x 6.5 x 5	154.37	
	6261.27	

2 BOWER ANCHORS	12 CWTs EACH STOCKLESS
1	8 3/4
1 STREAM	4 1/4 EX STOCK
1 KEDGE	2
106 FMS.	1 1/16 STUD CHAIN CABLE.
60 FMS	2 3/4 STEEL WIRE
75 FMS	2 5/8
90 FMS	2

EQUIPMENT TO OWNERS REQUIREMENTS

PLAN No. 3402
FOR ENCLOSURE TO
MESSRS LLOYDS SURVEYORS
HULL FROM
COCHRANE & SONS, LTD.
SHIPBUILDERS, SELBY.
DATE 13/1/20. J.E.



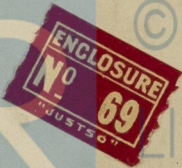
SHELL THICKNESSES IN EXCESS OF RULE.
REQUIRED BY OWNERS

RIVETING

BUTTS OF KEEL OVERLAPPED & TREBLE RIVETED FORE & AFT
SHEERSTRAKE STRAIGHT & DOUBLE RIVETED
TREBLE AT BREAK
REMAINDER OF SHELL PLATING BUTTS OVERLAPPED & DOUBLE RIVETED FORE & AFT
BUTTS OF STRINGER PLATE DOUBLE RIVETED FORE & AFT.

CENTRE & SIDE GIRDER PLATES & ANGLES CONTINUOUS

For scantlings & of Bulb tank
see separate plan.



© 2021

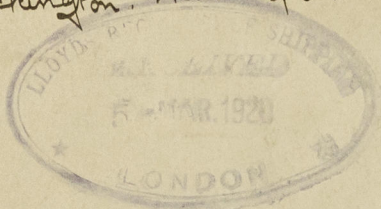
Lloyd's Register
Foundation

002209-002278-0086

MIDSHIP SECTION
COCHRANE & SONS. LTD

N^o 747

S.S. Margaret Lockington. Hull report No 32416



© 2021

Lloyd's Register
Foundation

002269-002278-0086