

FERGUSON BROS.
(PORT-GLASGOW, LTD.)
SHIPBUILDERS, ENGINEERS
& DREDGE BUILDERS
PORT-GLASGOW

Nº 276.
PROFILE & DECK PLAN.
TWIN SCREW GRAB HOPPER DREDGER.

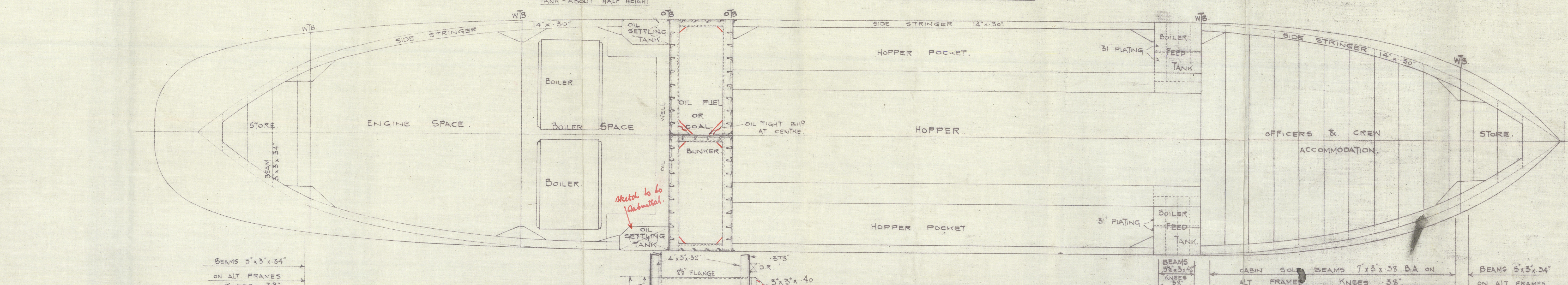
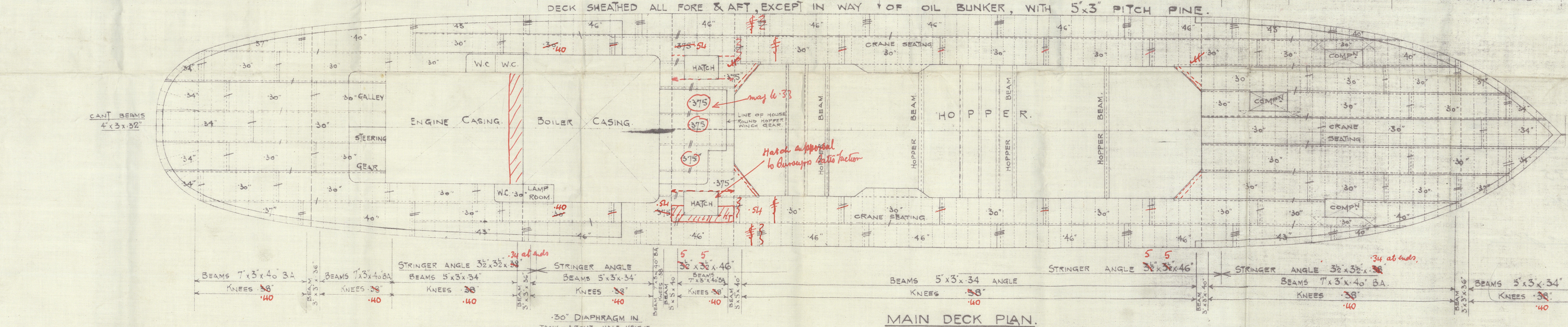
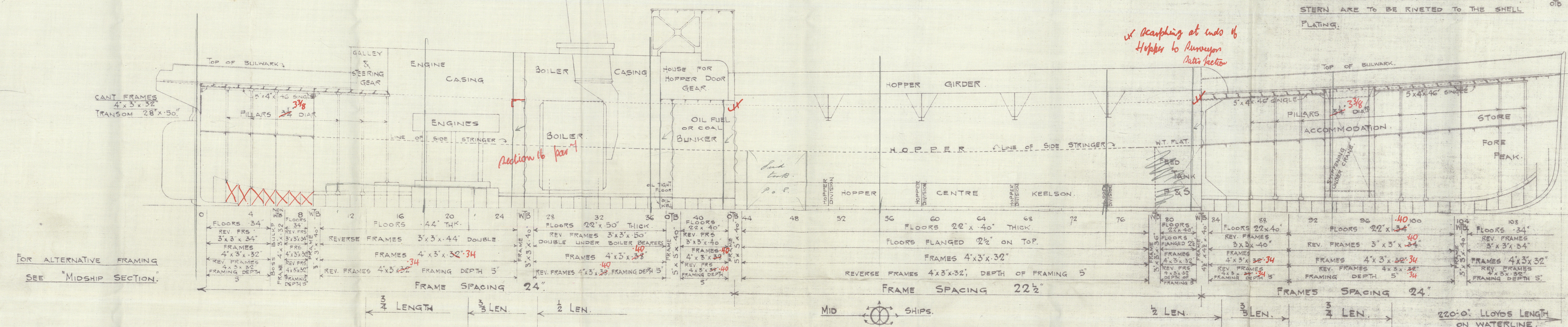
TO LLOYDS LATEST REVISED RULES & REGULATIONS. "LLOYDS HIGHEST CLASS-100 A.I. GRAB HOPPER DREDGER."

DIMENSIONS: 220'-0" LLOYDS LENGTH ON WATERLINE x 37'-6" M^{LD} x 16'-9" M^{LD}

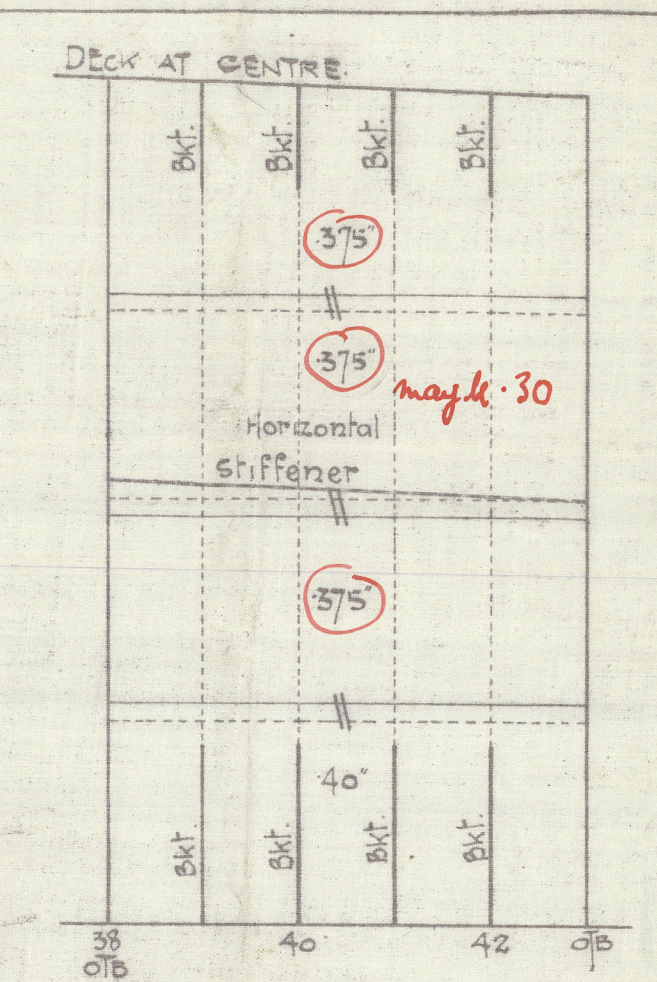
SCALES: $\frac{1}{8}" = 1 \text{ FOOT}$; SECTIONS: $\frac{1}{4}" = 1 \text{ FOOT}$.

FOUR ROWS OF SOLID CONVEX BARS 5"x1" ON EACH SIDE OF QUARTERS OF VESSEL AND EXTENDING TO WITHIN 12'-0" OF BOW & STERN ARE TO BE RIVETED TO THE SHELL PLATING.

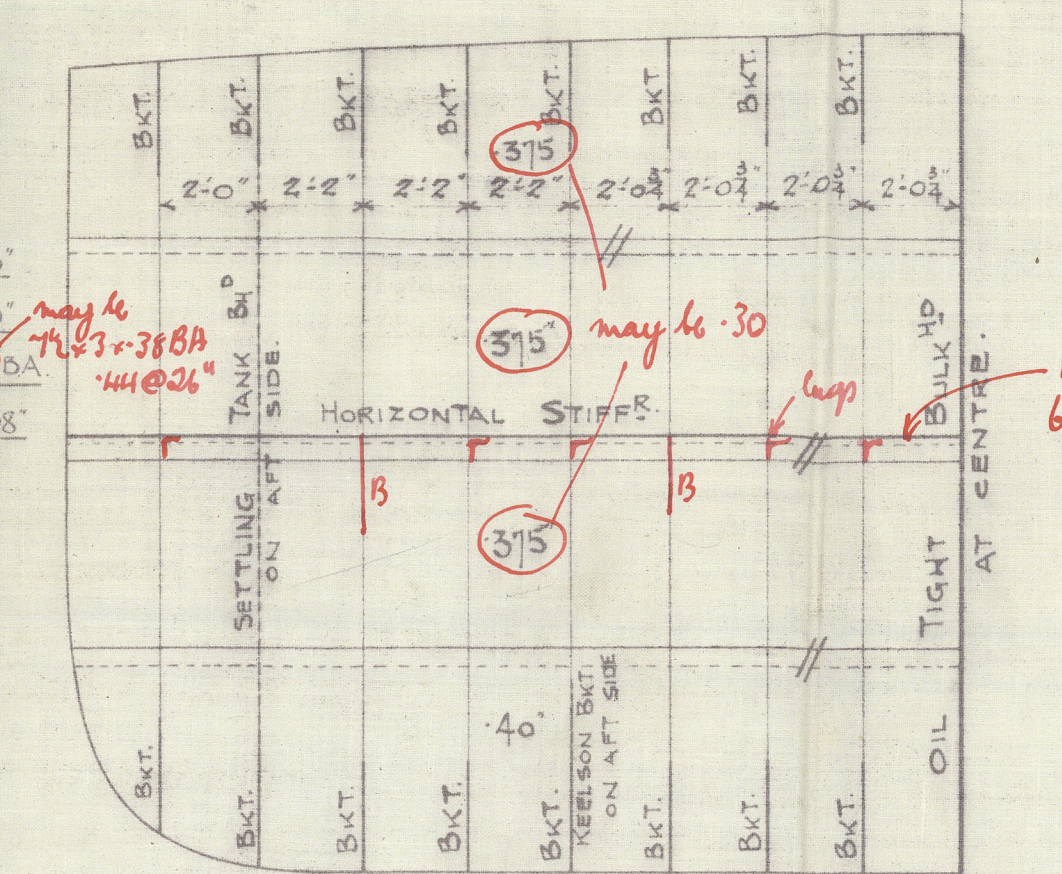
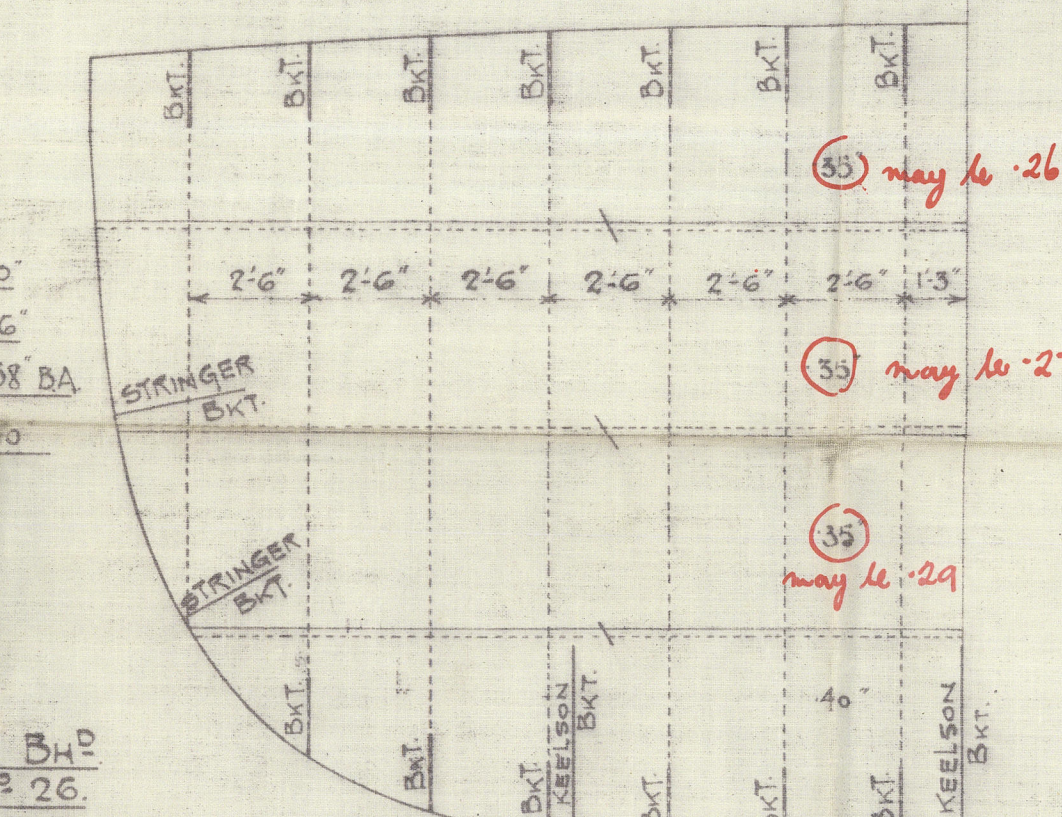
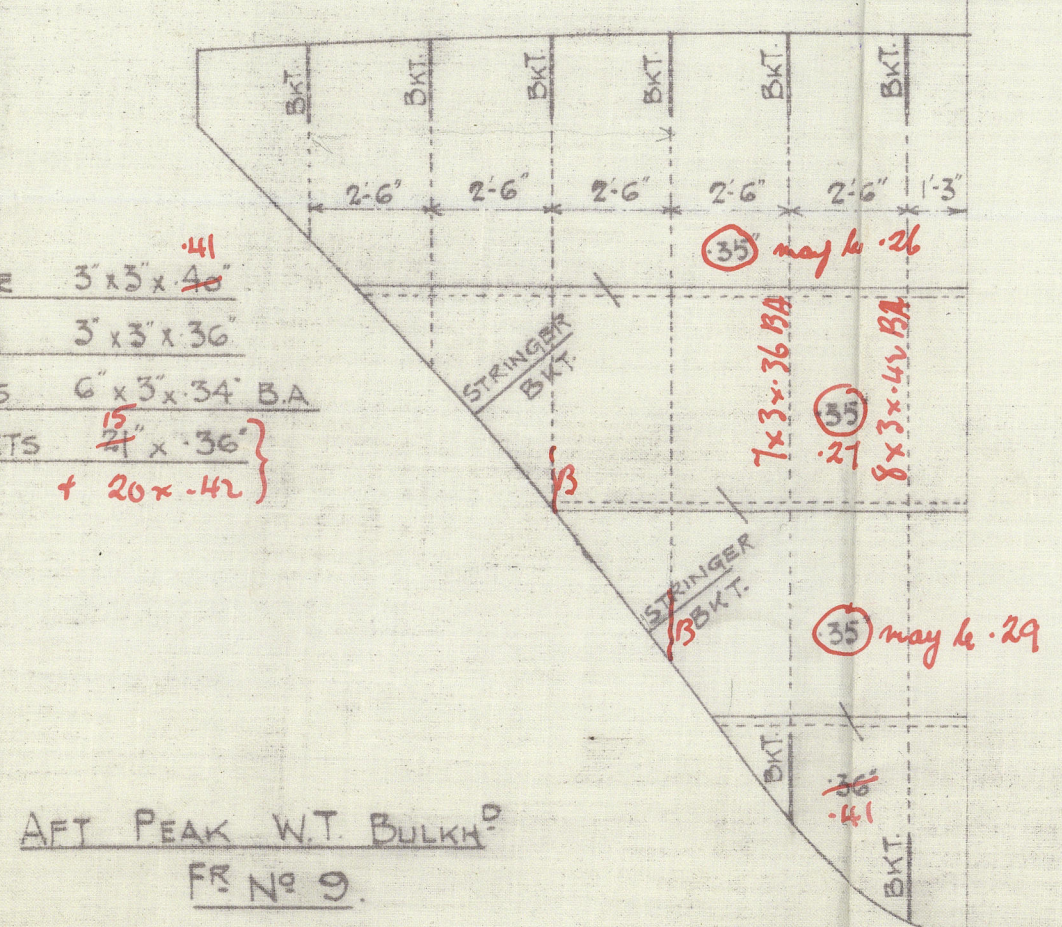
FOUR ROWS OF SOLID CONVEX BARS 5"x1" ON EACH SIDE OF QUARTERS OF VESSEL AND EXTENDING TO WITHIN 12'-0" OF BOW & STERN ARE TO BE RIVETED TO THE SHELL PLATING.



SECTION THRO' OIL SETTLING TANK. SCALE: $\frac{1}{2}" = 1 \text{ FOOT}$.

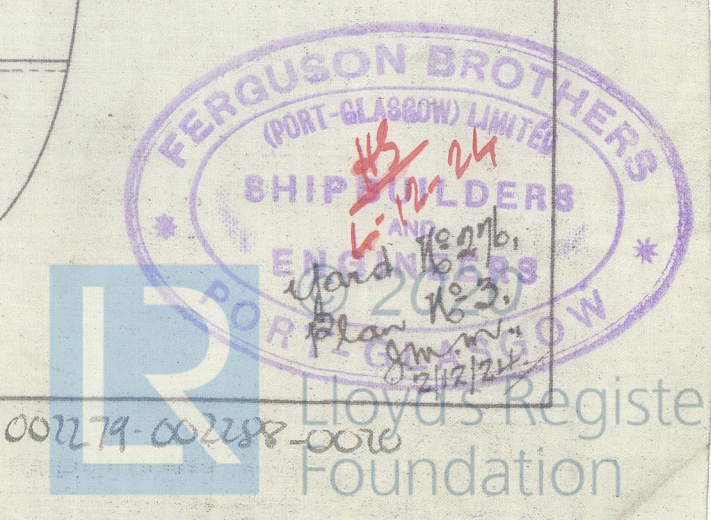
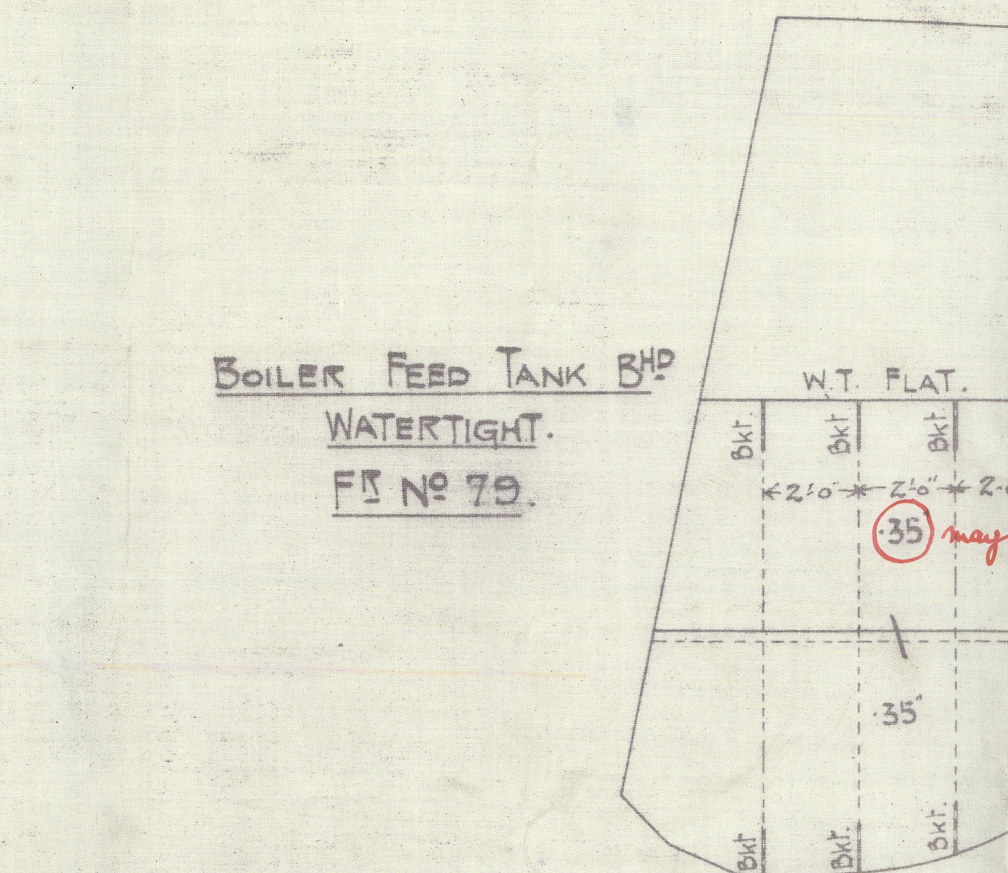
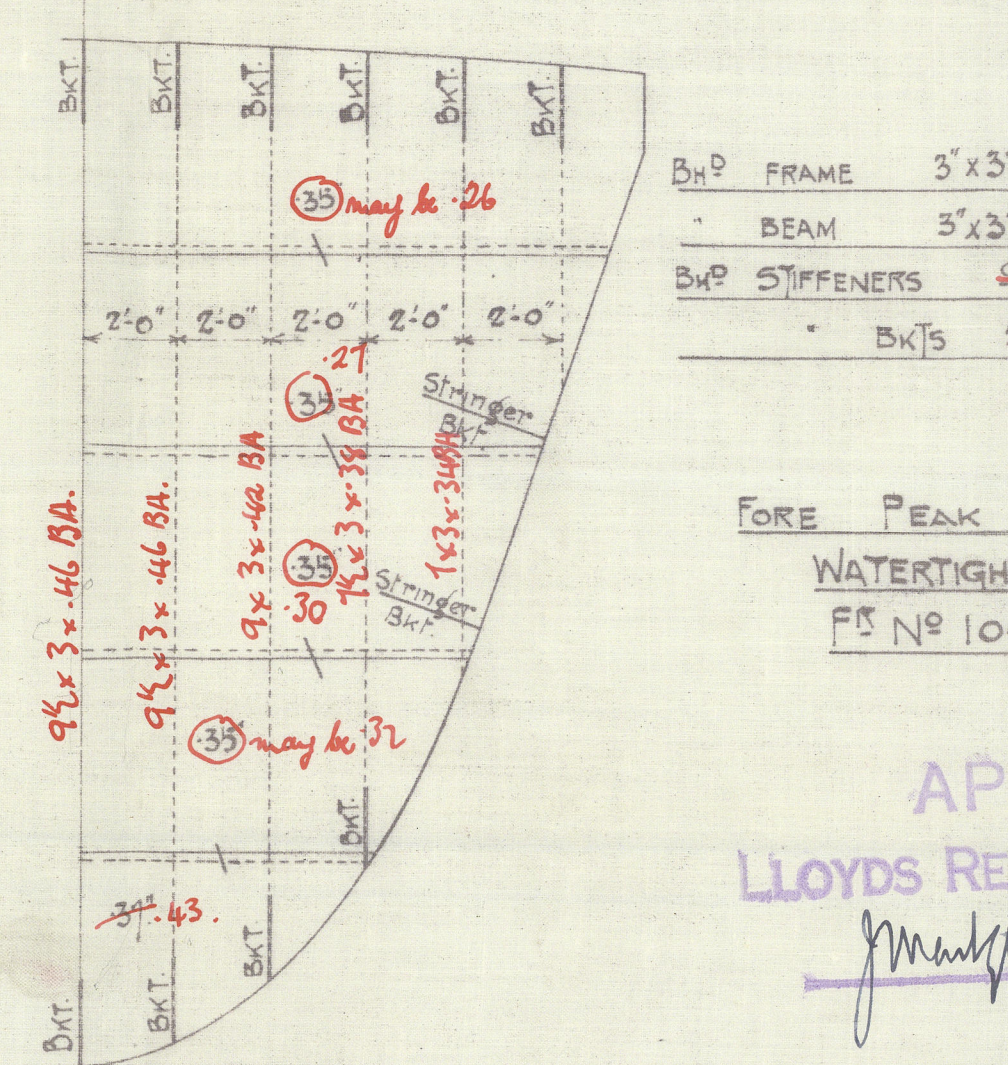
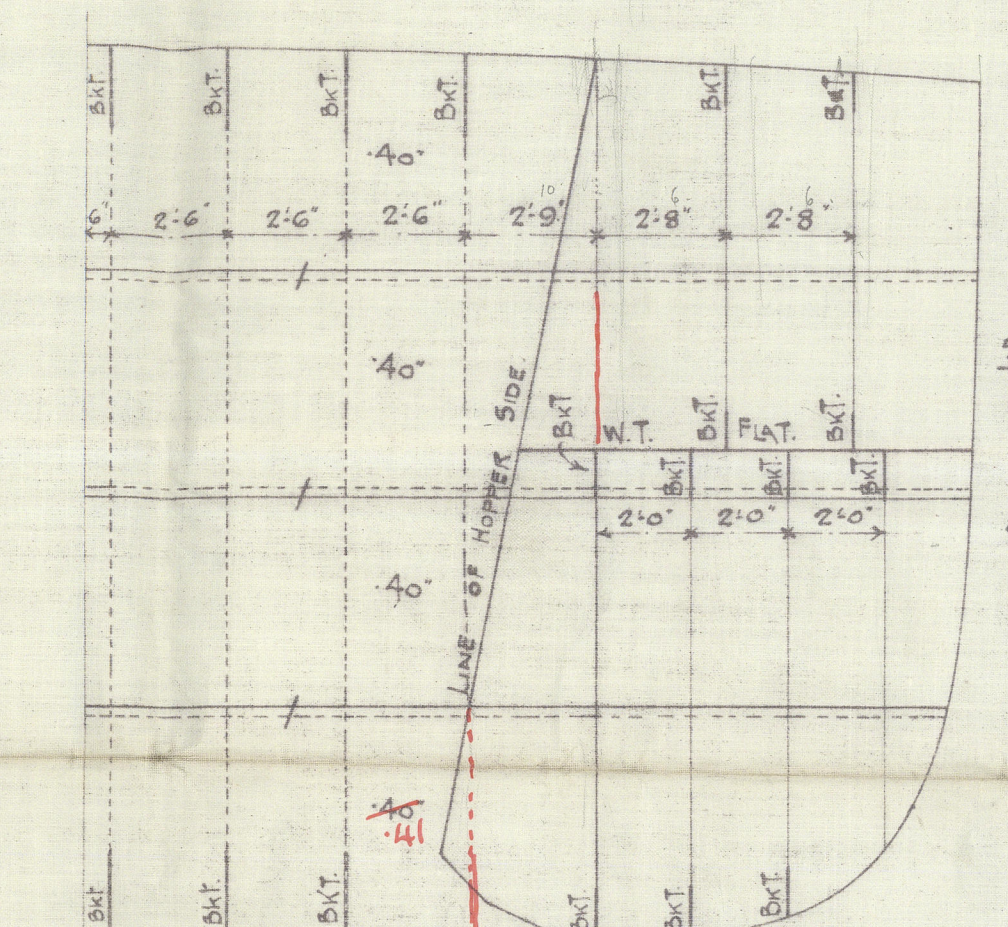
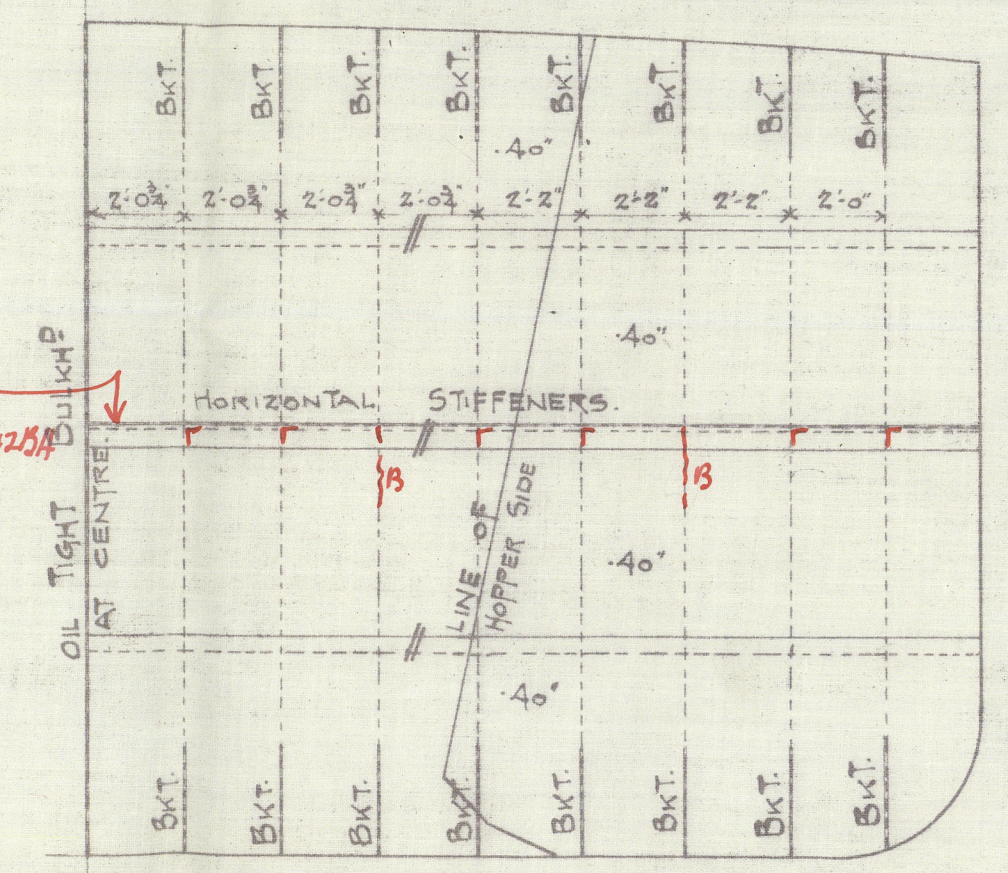


LONGITUDINAL BULKHEAD OIL TIGHT
BHP FRAME 5'x5'x40'
BEAM 5'x5'x40'
STIFFENERS 6'x3'x34" BA
STIFF BKTs 24'x24' 2 1/2" PLATE



NON WT. BOSS BHP FS Nº 6.

LLOYDS NUMERALS.
L=220, B=37.5, D=16.75, d=14.917.
PROPORTIONS: $\frac{L}{B} = 220/37.5 = 13.13$
1ST LONGITUDINAL NUMBER = LxD = 220x16.75 = 3,685.
2ND LONGITUDINAL NUMBER = Lx(B+d) = 220x(37.5+16.75) = 11,935.
EQUIPMENT NUMBER.
2ND LONGITUDINAL NUMBER = $\frac{60}{50 \times 7} = 11,935$
ADD FOR ENGINE & BOILER CASING: $\frac{50 \times 7}{2} = +17.5$ 210
EQUIPMENT NUMBER = 12,145.



Messrs. Sargison Bros.

To. L. Grob Hopper Dredger

N^o 35

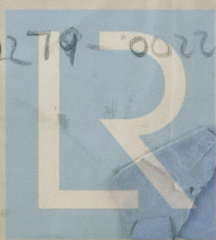
Gard N. 276.

Profile & Deck plan.

Gilt. Rep. N. 18437.

001279-002288

©2020



Lloyd's Register
Foundation