

Lloyd's Register of Shipping.

Ship's Name "BENRINNES"

Official No. 145884

Memorandum of alterations reported since ship was surveyed for assignment of Load Lines in 1932.

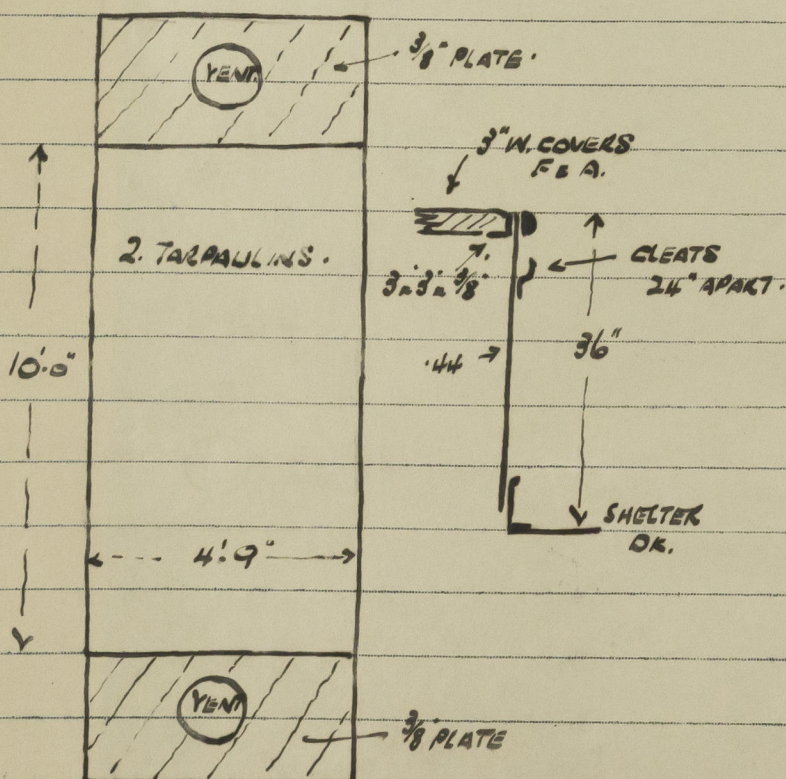
- ① A steel coaming 36" above SK built on tonnage opening on shelter SK, fitted with wood hatch covers, tarpaulins & battening arrangements (see sketch)
- ② Wash Potts in tonnage space permanently closed by riveting plates over openings.
- ③ All overboard scuppers from shelter tween decks permanently closed by riveting plates over the openings in the shell & the tween decks are efficiently drained to the bilges.
- ④ The present battening arrangements on the shelter tween deck hatches are being maintained & are efficient.
- ⑤ The air pipes on the shelter SK are provided with efficient means of closing.
- ⑥ The sills of the doors in machinery casings on shelter SK have been increased to 24" in height by welded steel plates.
- ⑦ The watertight bulkheads have not been extended to the shelter deck.

GROSS TONNAGE = 6637.68 REGISTER DEPTH = 36.4'

NETT. " = 4155.87.

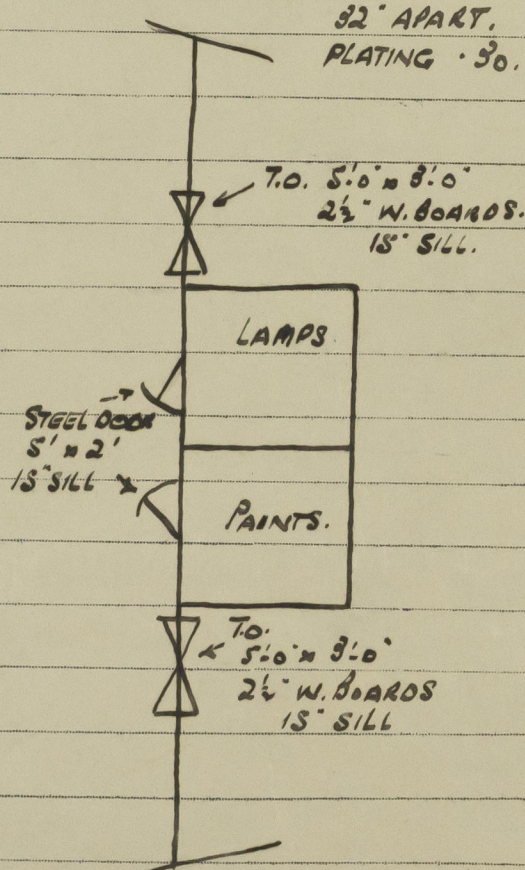
UNDERDECK " = 4816.87.

STORE HATCH.



F'CLS BULKHEAD.

STIFFES. 3" x 2 1/2" x 30"
32" APART.
PLATING .30.



- ⑧ The statutory deck line has been cut in at the top of the steel shelter deck.

EE: 5.0.0 16 MAY 1940
1,240. T. (MADE AND PRINTED IN ENGLAND)

002279-002288-0162

17/5/40
15.5.40
17/5/40