

NO 592 G.

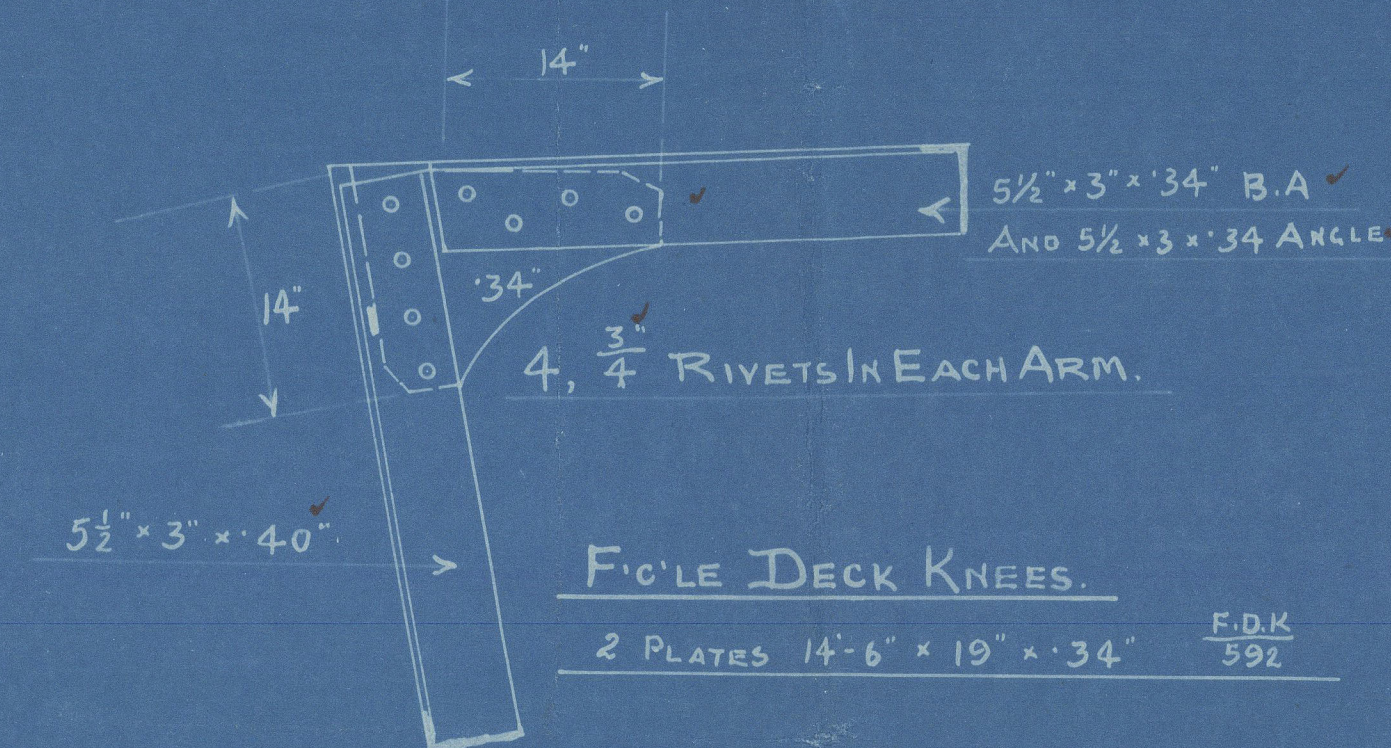
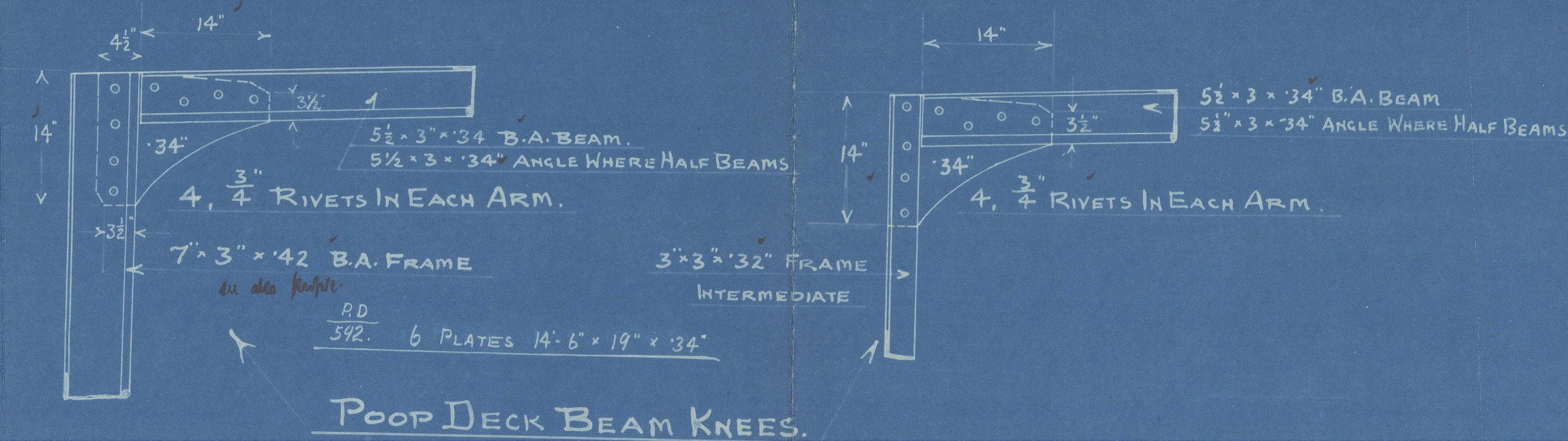
POOP & FORECASTLE DECKS.

SCALE $\frac{1}{4}$ " = 1 FOOT.

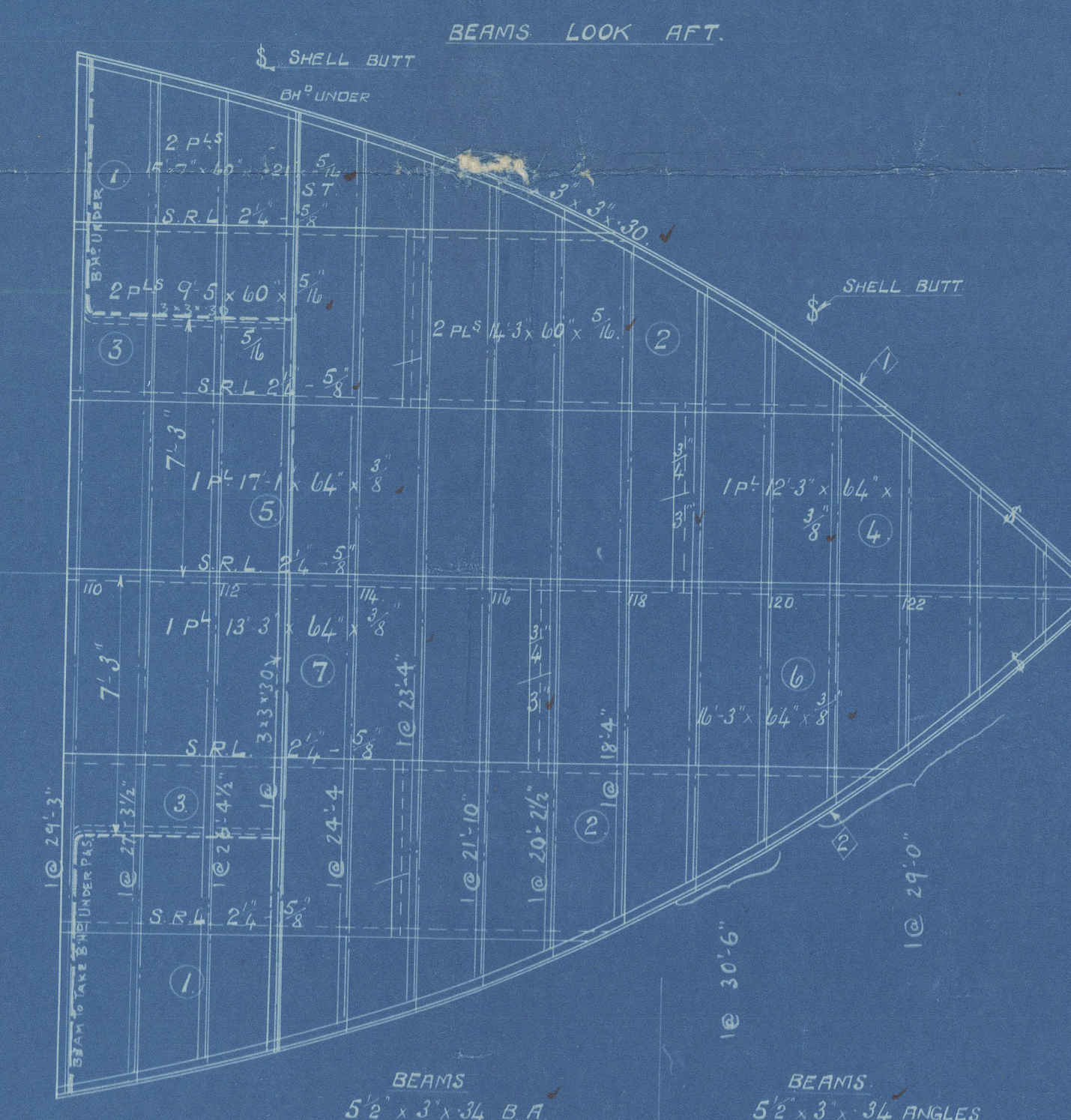
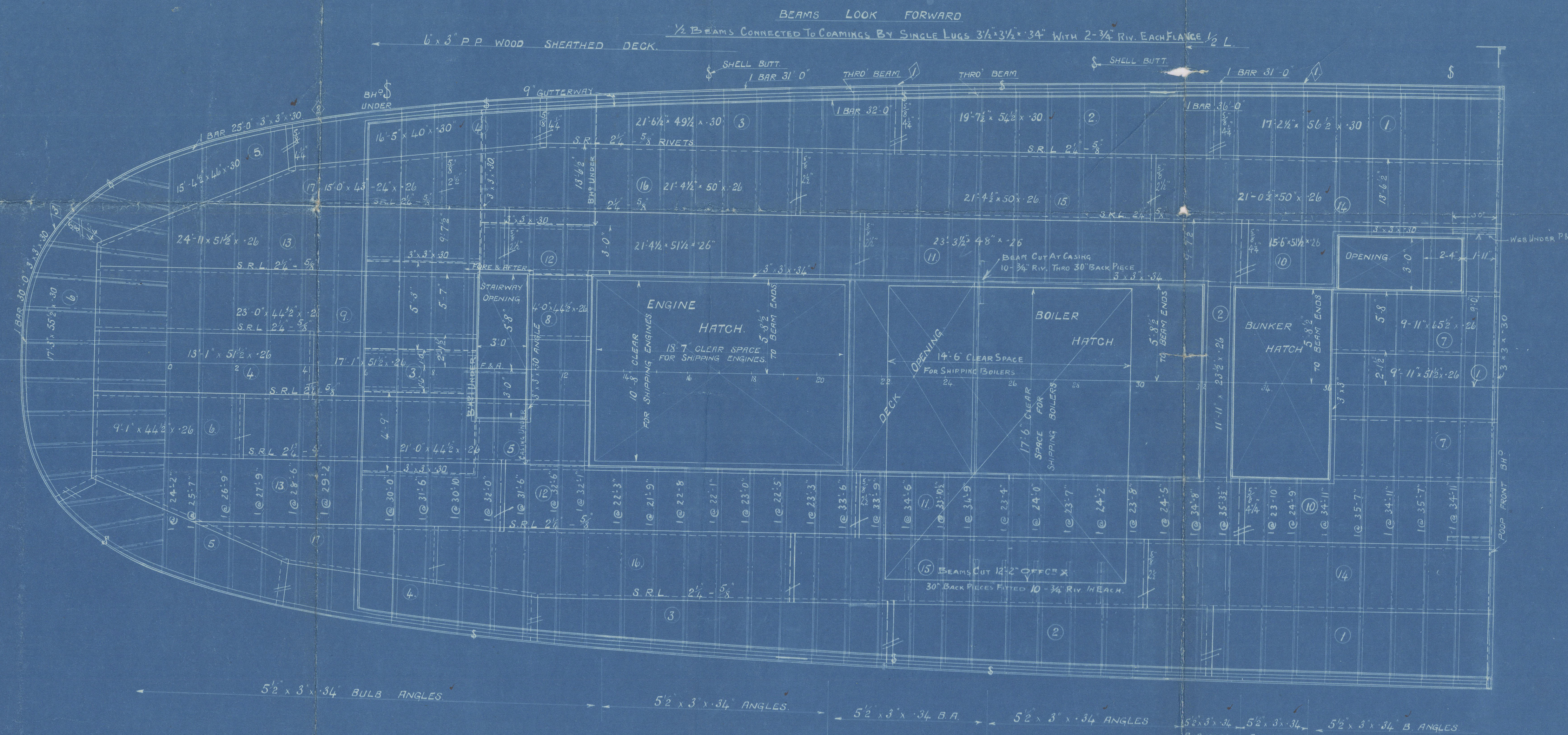
DECK PLATING JOGGLED THROUGHOUT.



MARK	NO	LENGTH	BREADTH	THICK	REMARKS
P.O.S.	1	31'-0"	3'-3"	.30	POOP DECK STRINGER
	2	25'-0"	"	"	"
	3	30'-0"	"	"	"
P.O.G.	1	31'-0"	3'-3"	.30	POOP DECK GUTTERWAY
	2	25'-0"	"	"	"
F.O.S.	1	31'-0"	3'-3"	.30	FORECASTLE DECK STRINGER
	2	25'-0"	"	"	"



DESCRIPTION	DIA.	PITCH	HEAD	POINT
STRINGER TO BEAMS	5/8"	2 1/2"	PAN	FLUSH
STRINGER & DECK TO BEAMS AT HATCH ENDS	5/8"	2 1/2"	PAN	FLUSH
CASINGS, POOP & FORE FRONTS	5/8"	2 1/2"	PAN	FLUSH
STRINGER & DECK SEAMS	5/8"	2 1/2"	PAN	FLUSH
STRINGER & DECK BUTTS	5/8"	2 1/2"	PAN	FLUSH
STRINGER BAR TO DECK	5/8"	2 1/2"	PAN	FLUSH
STRINGER BAR TO SHELL	5/8"	2 1/2"	PAN	FLUSH
GUTTERWAY BAR TO DECK	5/8"	2 1/2"	PAN	FLUSH
CASING BAR & HATCH BARS TO DECK	5/8"	2 1/2"	PAN	FLUSH



APPROVED
LLOYDS REGISTER OF SHIPPING
M. J. G. 1914

Derks (Poop &
7'de)

Mess Harland & Wolff, Le

No 592.

GLASGOW REPORT No. 39805

$\frac{3}{5}$ Somerset Coast



© 2021

Lloyd's Register
Foundation

002298-002304-0003