

STERNPOST & RUDDER. (CLASS + 100 A1)SCALE $\frac{1}{2}" \times 1\frac{1}{2}" = 1 \text{ FOOT.}$ AREA OF RUDDER. 40.18 sq ft DIST. OF CG. ABAFT $\frac{1}{2}$ OF PINTLES 2.15 $A \times \text{DIST} = 85.6$

SPEED UNDER 10 KNOTS

HORIZONTAL COUPLING TO RUDDER STOCK AS PER DETAIL.

STERNFRAME GALEPIECE TO BE 20% IN EXCESS OF

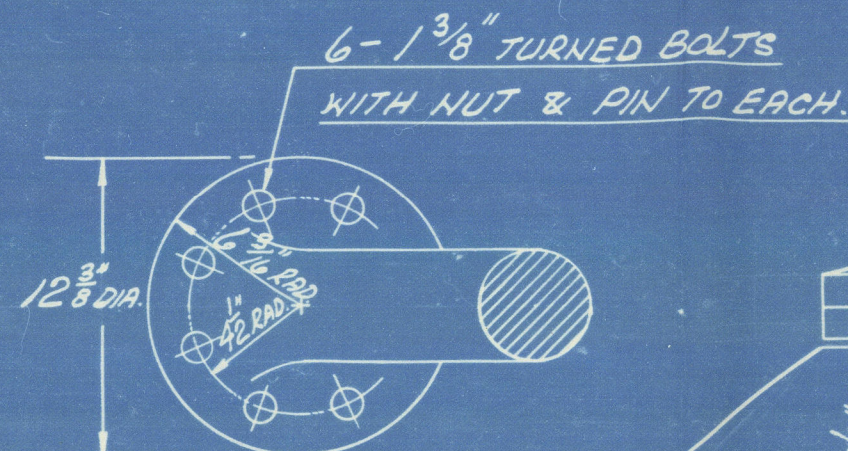
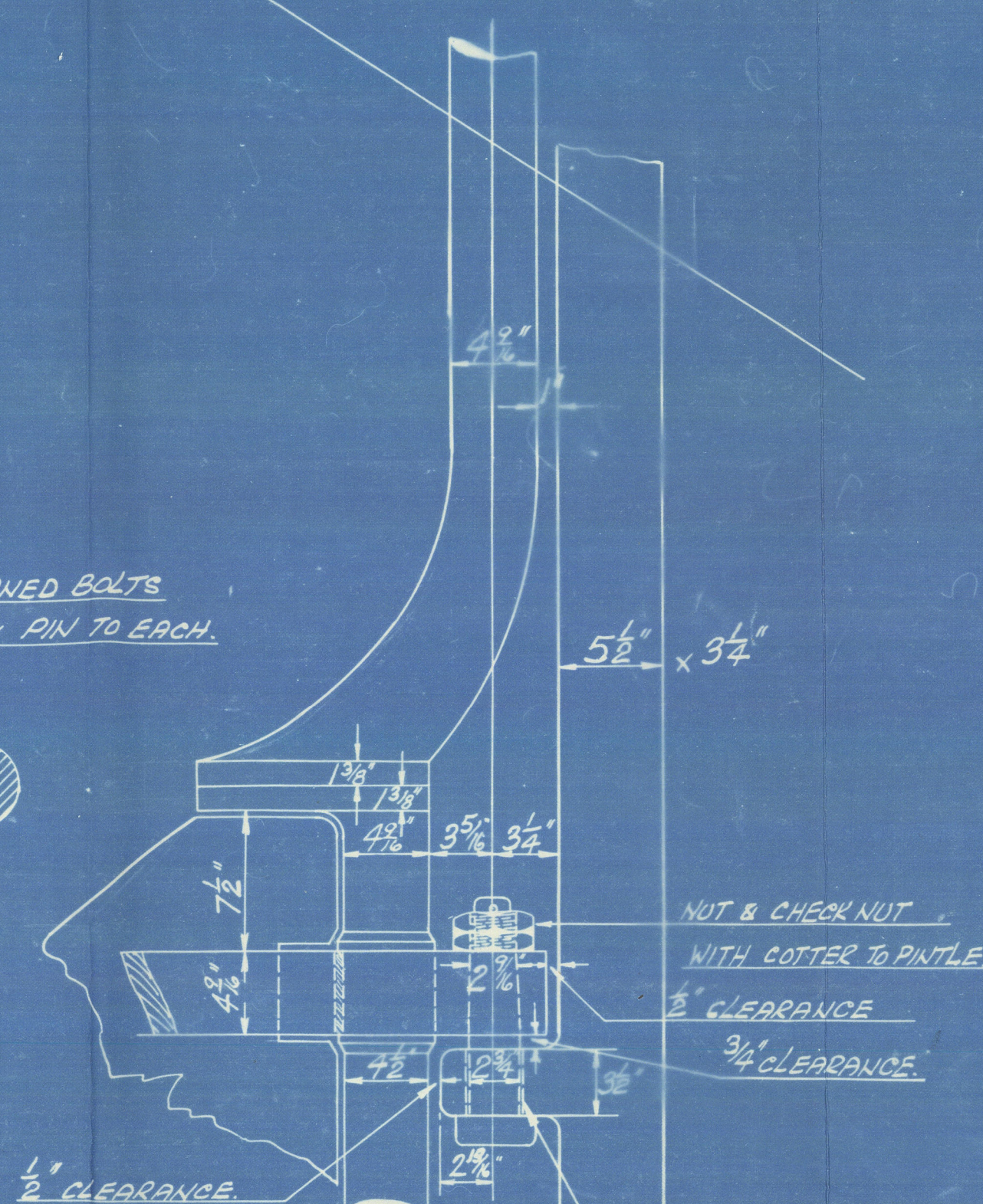
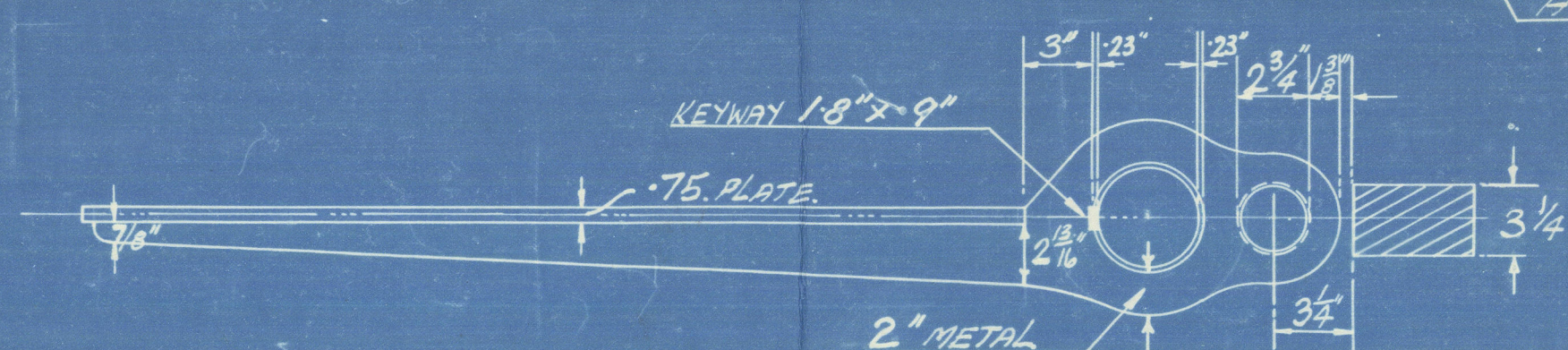
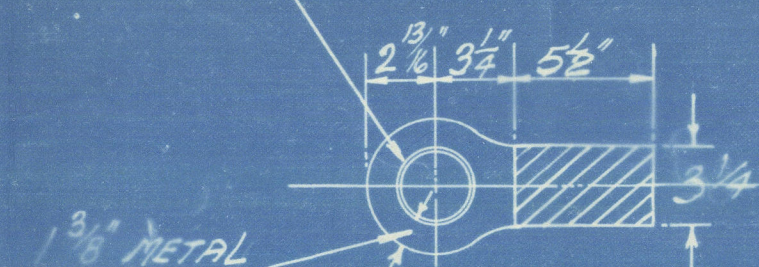
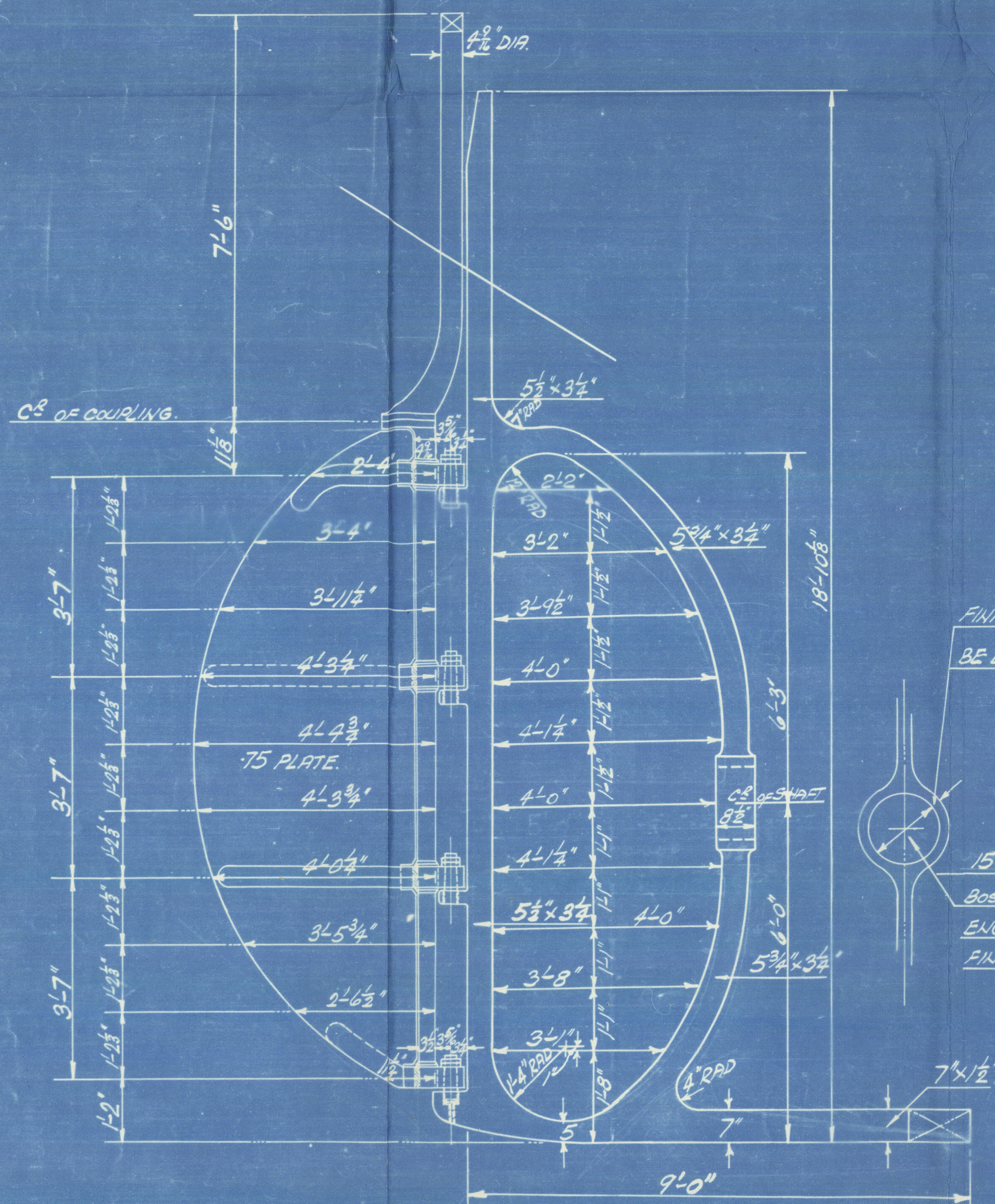
RODDELLOR POST (EXCESS TO BE THWAARTSHIP) = 22.50" = 5" x 4 $\frac{1}{2}"$

KEYS TO RUDDER ARMS: - THICKNESS OF KEY = 10% DIA. RUDDER STOCK.

BREADTH --- = TWICE THICKNESS.

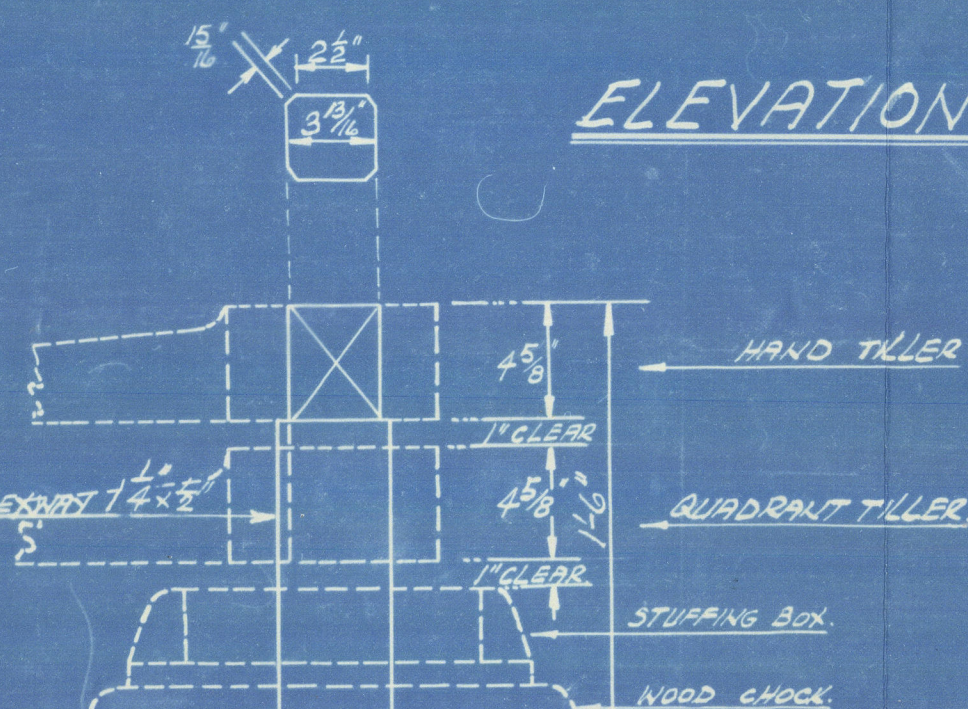
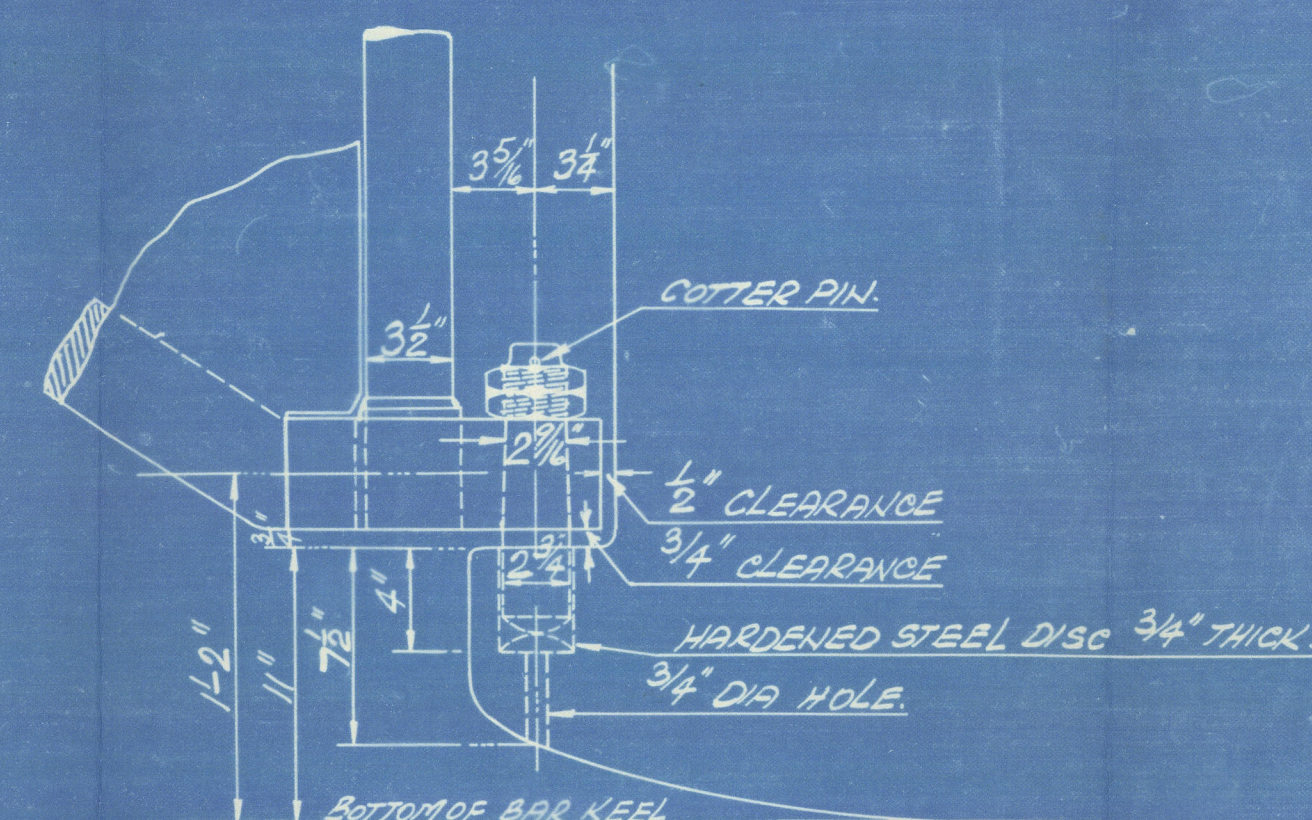
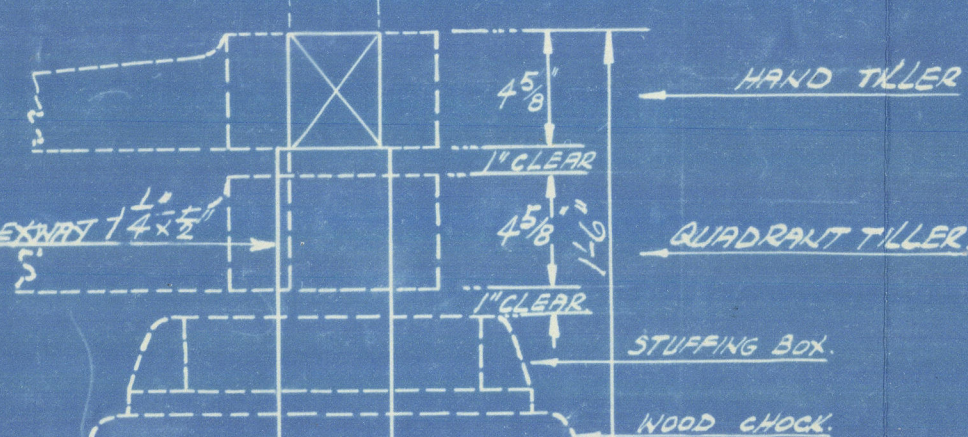
1" RIVETS IN STERNFRAME SPACED 5" C² TO C² (DOUBLE ROW)

1" --- KEEL --- 5" --- (---)

PLAN OF COUPLINGELEVATION OF COUPLING & UPPER PINTLEPLAN OF ARMSPINTLES 2 3/4" DIA
HOLE 2 1/8" DIASKETCH OF STERNPOST IN WAY OF GUDGEONSTERNFRAME & RUDDER

FINISHED DIMENSION NOT TO
BE LESS THAN 1.95"

1 1/2" DIA. ROUGH BORE
BOSS TO BE BORED TO SUIT
ENG'G REQUIREMENTS
FINISHED DIA SUPPLIED LATER.

ELEVATION OF ARMSDETAIL OF HEEL PINTLEDETAIL OF TOP OF RUDDER STOCKTO BE FORGED, MACHINED AND DRILLED IN USUAL MANNER
TO PASS LLOYD'S SURVEY.NOT TO BE PAINTED, BUT MAY RECEIVE A COAT OF OIL.
1" RIVETS IN RUDDER ARMS SPACED 4 1/2" C² C². 1 1/16" HOLES (GSK)
FIGURED DIMENSIONS ONLY TO BE WORKED TO.

RUDDER HEAD 4 3/16" DIA.

PINTLES 2 3/4" DIA.

MAINPIECE AT HEEL 3 1/2" DIA.

RUDDER ARM AT MAINPIECE 4 3/16" x 2 3/16"

" " " POINT 4 3/16" x 7/16"

" " " ROUND MAINPIECE 2" THICK

" " " PINTLE 1 3/16" ---

RUDDER ARMS C² TO C² 43"

" PLATE .75

" POST 5 1/2" x 3 1/4"

PROPEL POST 5 1/2" x 3 1/4"

BOSS NOT LESS THAN 60% STERNFRAME THICKNESS = 1.95" MIN THICKNESS

ARMS TO BE SHRUNK AND KEYED TO MAINPIECE.

MAINPIECE INCREASED 10% IN DIA. IN WAY OF EACH ARM TO ADMIT
OF EFFICIENT KEYWAY BEING CUT.

S/S Wheatcrop
Sternpost & Rudder

"
Wheatcrop
apl. 3294.

002320 - 002329 - 0059



© 2020

Lloyd's Register
Foundation