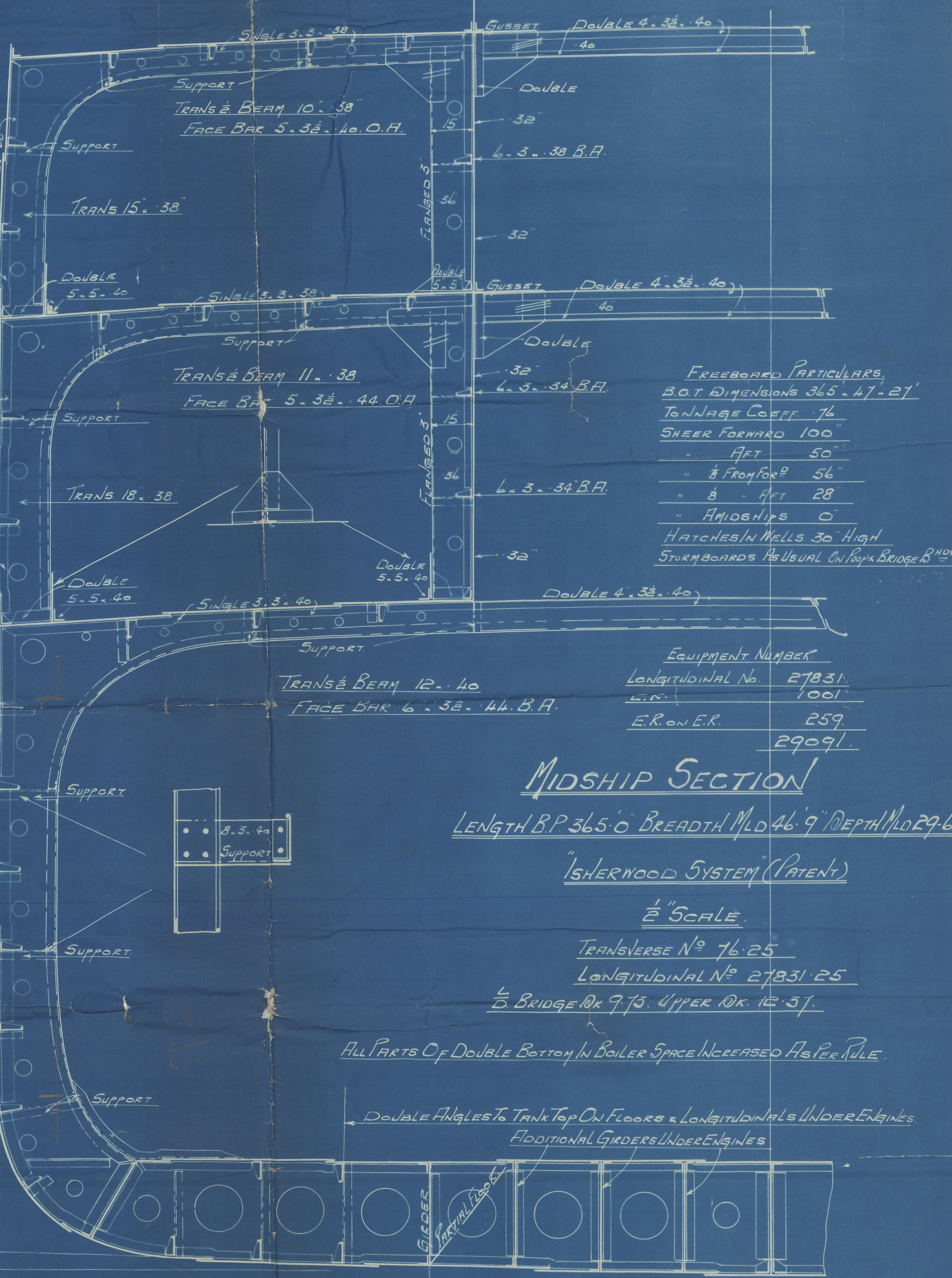
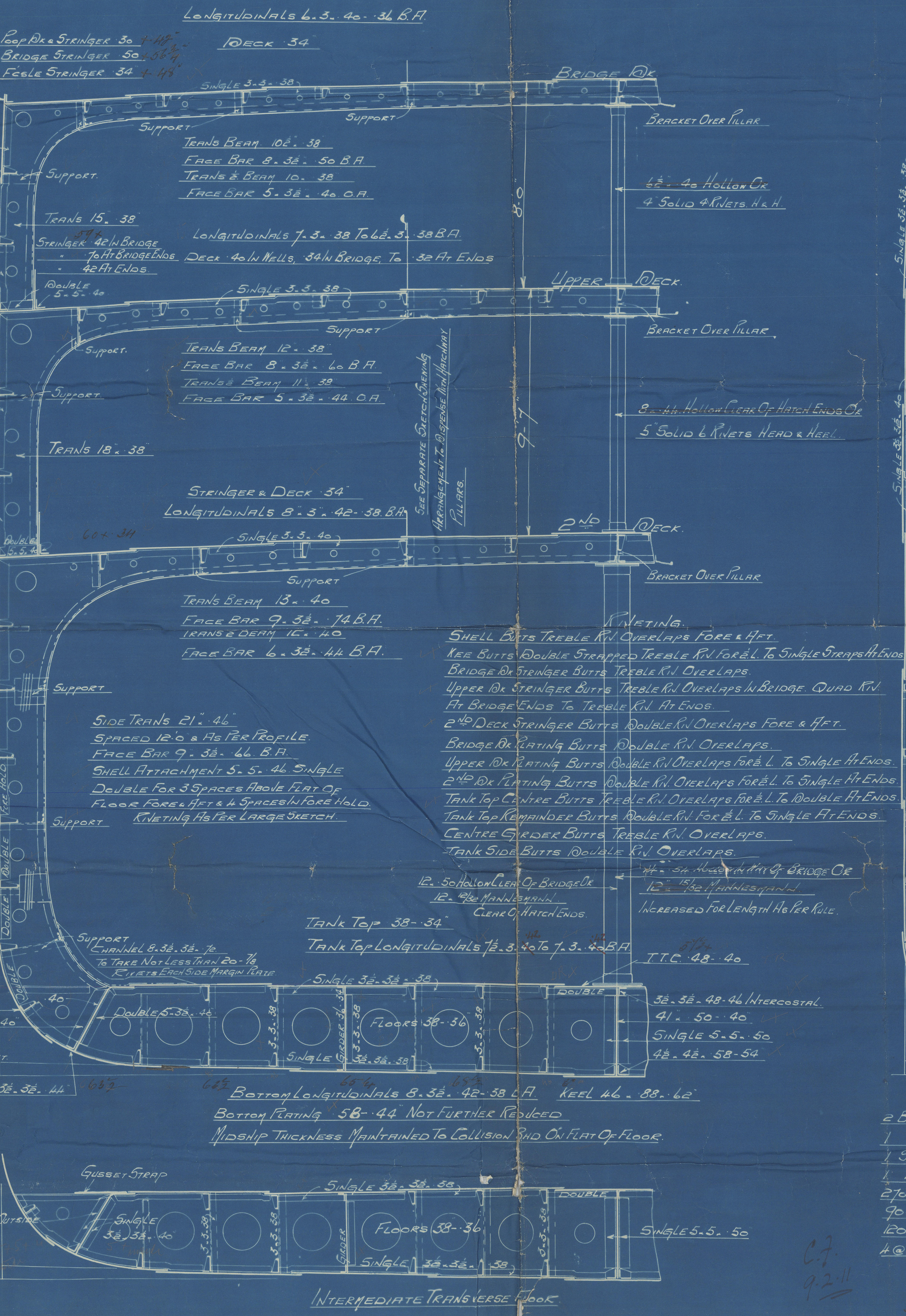


RIVETING IN ALL DECKS			
RIVETS SPACED 6 DIAS APART. BUTTS 6 MIDSHIPS 5 ENDS 6 IN PEAK TANKS } 3/4 RIVETS TRANSVERSE TO DECKS 5 DIAS APART 3/4 RIVETS TRANS TO SHELL IN TANK 5 DIAS APART 1/8 IN THRO SHELL 3/4 THRO TRANS. TRANS TO TANK TOP 5 DIAS APART 3/4 RN			
RIVETING IN LONGITUDINALS 7/8 DIA	6	5	BRIDGE 48. 48. 56 Pop Rivets 38. 38. 34 Pop Sides 36 Feble Sides 40. 58
RIVETS 6 DIAS APART	6	5	68. 58. 40. 36 B.F.
RIVETS 6 DIAS APART	6	5	56 68. 38. 40. 36 B.F.
RIVETS SPACED 5 DIAS APART FOR 10 RIVETS EACH SIDE TRANS & BIDS 6 DIAS ELSEWHERE.	6	6	56 IN BRIDGE 68 IN BRIDGE ENDS 76 42 FT ENDS SHEER STRAKE IN BRIDGE 56 AT BRIDGE ENDS 76 TO 42 FT ENDS Nº 1 7. 38. 44. 40 B.F.
RIVETS SPACED 5 DIAS APART FOR 10 RIVETS EACH SIDE TRANS & BIDS 6 DIAS ELSEWHERE.	6	6	Nº 2 7. 38. 44. 40 B.F.
RIVETS SPACED 5 DIAS APART FOR 10 RIVETS EACH SIDE TRANS & BIDS 6 DIAS ELSEWHERE.	6	6	3. 8. 38. 42. 38 B.F.
RIVETS SPACED 5 DIAS APART FOR 10 RIVETS EACH SIDE TRANS & BIDS 6 DIAS ELSEWHERE.	6	6	4. 8. 38. 46. 42 B.F.
RIVETS SPACED 5 DIAS APART FOR 10 RIVETS EACH SIDE TRANS & BIDS 5 DIAS ELSEWHERE.	8	7	5. 9. 38. 46. 38. 38. 44 B.F.
RIVETS SPACED 4 DIAS APART FOR 10 RIVETS EACH SIDE TRANS & BIDS 5 DIAS ELSEWHERE.	8	7	6. 9. 38. 46. 38. 38. 44 B.F.
RIVETS SPACED 4 DIAS APART FOR 10 RIVETS EACH SIDE TRANS & BIDS 5 DIAS ELSEWHERE.	8	8	7. 10. 38. 50. 38. 38. 50 B.F.
RIVETS SPACED 4 DIAS APART FOR 10 RIVETS EACH SIDE TRANS & BIDS 5 DIAS ELSEWHERE.	8	8	8. 10. 38. 54. 50 B.F.
RIVETS SPACED 4 DIAS APART FOR 4 RIVETS EACH SIDE TRANS & BIDS 6 DIAS ELSEWHERE.	6	6	9. 7. 38. 40. 7. 38. 40 B.F.
BOTTOM LONG 18 RIVETS SPACED 4 DIAS APART FOR 4 RIVETS EACH SIDE TRANS. INTER TRANS & BIDS 6 DIAS ELSEWHERE.	6	6	UP THIS SCANTLING HERE SUPPORTED BY INTERMEDIATE BRACKET
TANK TOP LONG 18 RIVETS SPACED 5 DIAS APART FOR 4 RIVETS EACH SIDE TRANS. INTER TRANS & BIDS 6 DIAS ELSEWHERE.	6	6	
PLATE LONG 18 IN BOTTOM RIVETS SPACED 7 DIAS APART.			



FREEBOARD PARTICULARS.

B.O.T. DIMENSIONS 365. 47. 27

TONNAGE COEFF. 76

SHEER FORWARD 100

" AFT 50

" 8 FROM FORE 56

" MIDSHIPS 0

HATCHES IN WELLS 30 HIGH

STORM BOARDS AS USUAL ON POP & BRIDGE BIDS

EQUIPMENT NUMBER	
LONGITUDINAL NO.	27831
L.N.	1001
E.R. ON E.R.	259
	29091

MIDSHIP SECTION

LENGTH B.P. 365.0 BREADTH MLD 46.9 DEPTH MLD 29.6

"SHERWOOD SYSTEM" (PATENT)

1/2" SCALE

TRANSVERSE Nº 76.25

LONGITUDINAL Nº 27831.25

1/2 BRIDGE DECK 9.75. UPPER DECK 10.51.

EQUIPMENT	
2 BOWK ANCHORS (STOCKLESS) 525 CWT EACH	COLLECTIVE WEIGHT 1050 CWT.
1 " " " 445	
1 STREAM (EX STOCK) 14	
1 KEDGE 6	
270 FATHOMS 2 1/2" STUD CHAIN CABLE	
90 " 4" STREAM WIRE	
100 " 4" STEEL WIRE HANGER	
4 @ 90 " 2" STEEL WIRE WARP OR 7" MANILLA	

MESSRS W. HAMILTON & CO LTD

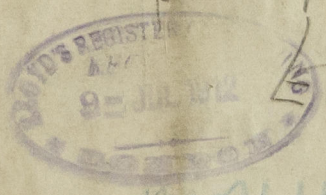
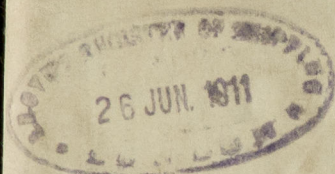
PORT GLASGOW

Nº 237. J. W. ISHERWOOD

Per 45

Stamm 10 10 10

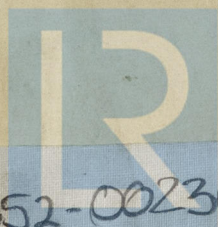
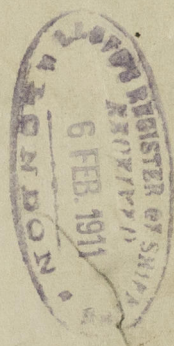
SARAYKOV



MALIAKIS
EX

Is. Intombi

Greenock Report No. 1628



© 2020

Lloyd's Register
Foundation

002352-002361-0003