

after

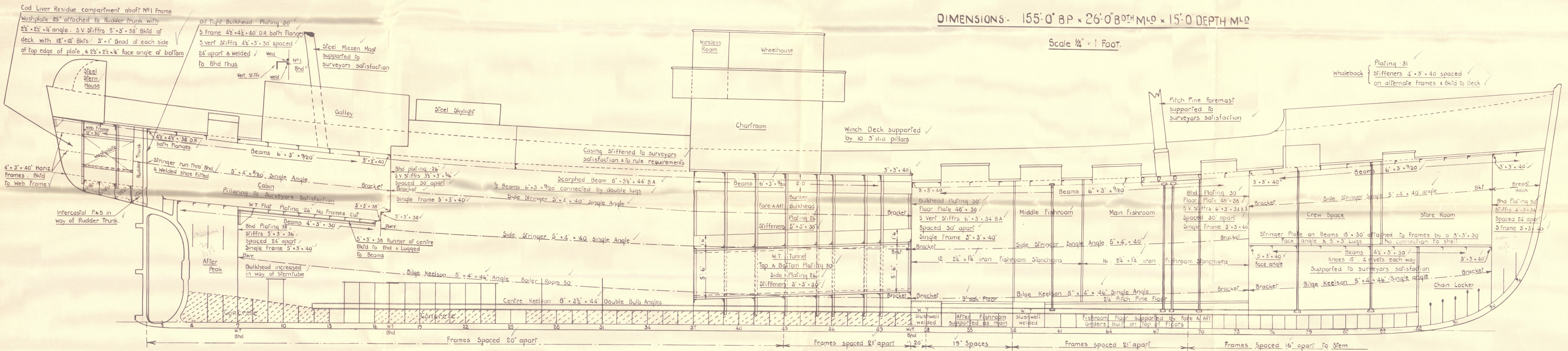
Scantlings in Cruiser Stern
Frames 4" x 3" x 40" spaced 21" apart 18" knees
Fore & Aft Beams 4" x 3" x 40" Bkt'd to shell 12" knees
Floor Plates 34" Reverse Frames 3" x 3" x 34"
30 intercostals Single Lugs to Floors (No connection to shell)

Nº 604.

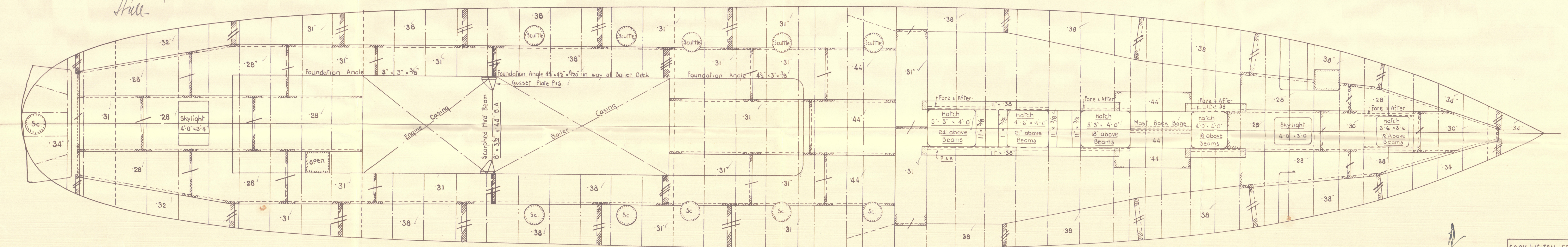
PROFILE AND DECK

DIMENSIONS- 155'-0" BP x 26'-0" BOTH MLD x 15'-0" DEPTH MLD

Scale 1/4" = 1 FOOT.



Marine Ste Fishing Coy
Hull



Note: Rivets thro' frames, floors & shell in way of Garboard & 2 adjoining strakes forward of 71' frame to be 4" apart

HULL

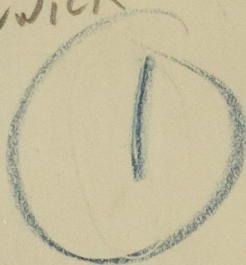
book, Welter & Gemmell's
Yard No 604

Profile & Deck
of Thornwick Bay.

~~C. L. L. X. NO~~

~~74~~

*THORNWICK BAT



N. N. 'AFRIDI'



© 2020

Lloyd's Register
Foundation

002362-002573-0067