

Lloyd's Register of Shipping.

SURVEYS FOR FREEBOARD.

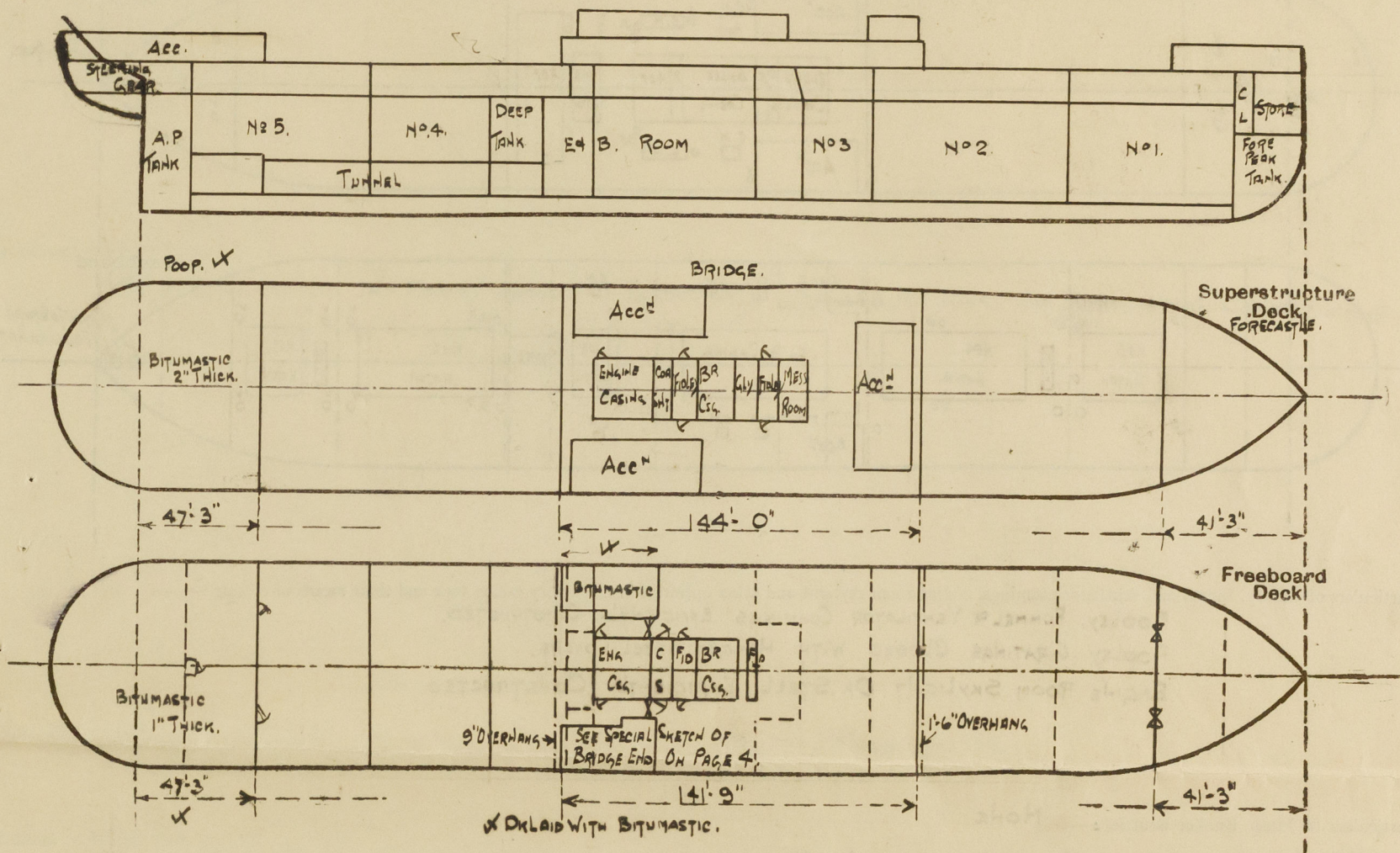
MAR 22 1939

(CONDITIONS OF ASSIGNMENT.)

GRK. REPORT N° 20718.

Ship's Name **ADVISED.**Port of Survey **PORT GLASGOW**Official Number **✓ 166263**Surveyor's Signature *Kenneth Inglis*Nationality and Port of Registry **BRITISH, LIVERPOOL.**Date of Survey **WHILE BUILDING**

Disposition and dimensions of superstructures, trunks, deckhouses and machinery casings to be inserted in the diagrams and tabular statement:—



Particulars of Superstructures, Trunks, Casings, Deckhouses.

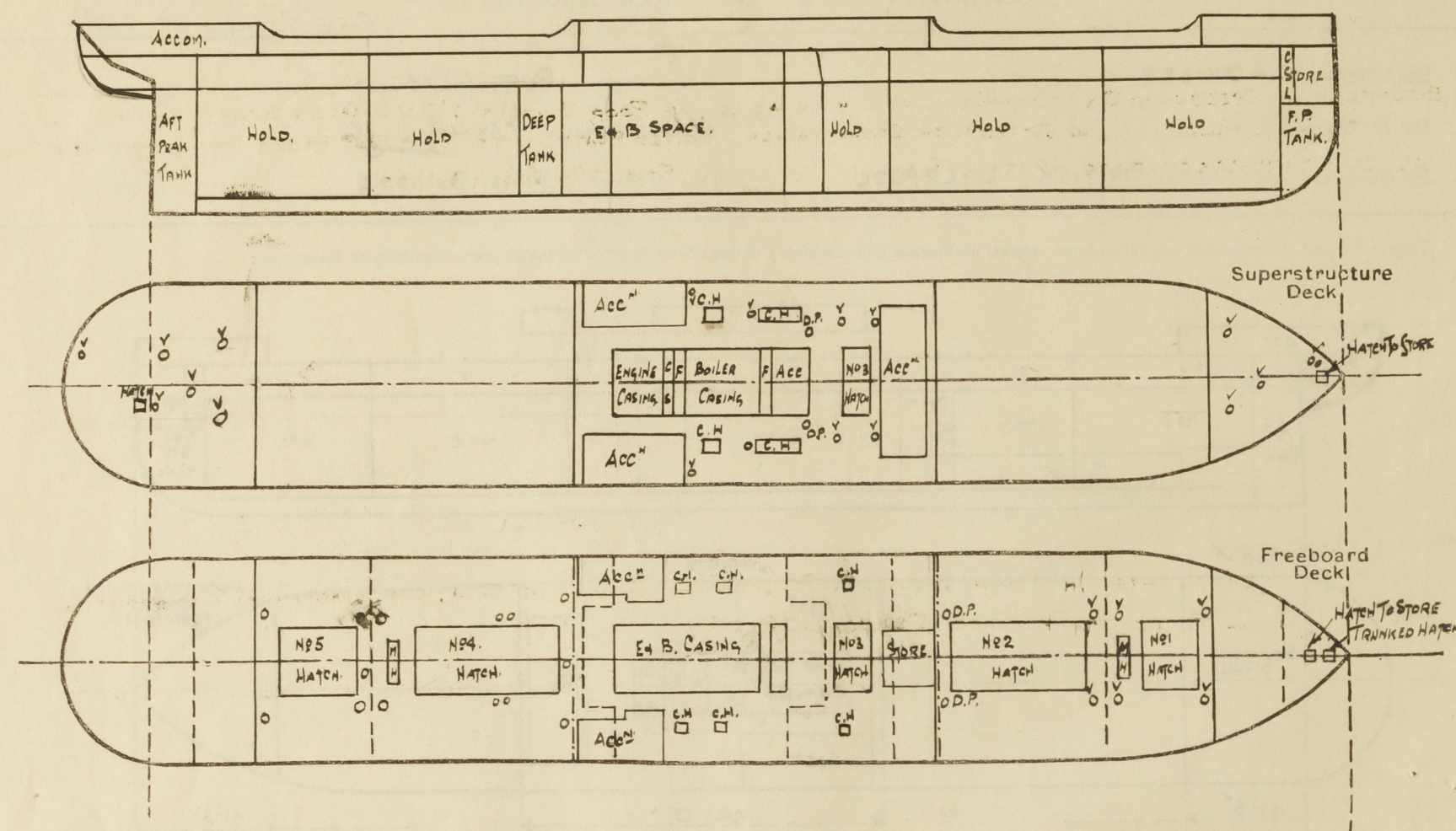
	Coaming	Plating	Stiffeners	Spacing	End Attachments of Stiffeners	Size of Openings	Height of Sills	Height of Casings
Poop Bulkhead ...	38"	38"	6x3x32 BA	24"-30"	LUGS	2@5'-0" x 2'-0"	18"	7'-11½"
Raised Quarter Deck Bulkhead ...	✓ 40"	30"	3x3x30	27"				
Bridge, After Bulkhead ...	30"	30"	4x3x34	31"	NONE	2@5'-0" x 3'-8"	18"	7'-11½"
Bridge, Forward Bulkhead ...	44"	44"	9x3½x50 B.A.	31"	LUGS TOP & BOTTOM	NONE	✓	7'-11½"
Forecastle Bulkhead ...	30"	30"	4x3x32	30" & 27"	NONE	5'-6" x 4'-0"	12"	7'-11½"
Trunk, Aft ...	✓							
Trunk, Forward ...	✓							
Exposed Machinery Casings on Freeboard ...	40"	32"	4x3x34	33½"	NONE	5'-0" x 2'-6"	18"	7'-11½"
Exposed Machinery Casings on Superstructure Decks ...	34"	30"	3x3x30	33"-27"	BACKS TOP CONTINUOUS BOTTOM.	5@5'-0" x 2'-6"	18"	7'-6"
Machinery Casings within Superstructures not fitted with Class I Closing Appliances ...	40"	30"	3x3x30	27"	CONTINUOUS.	2@5'-0" x 4'-0" 2@5'-0" x 2'-6"	18"	7'-6"
Deckhouses on Flush Deck Ships ...	✓							

Particulars of Closing Appliances (state if capable of being manipulated from both sides).

Poop Bulkhead ...	2" SOLID WOOD DOORS (TEAK) WORKABLE FROM BOTH SIDES. ✓
Raised Quarter Deck Bulkhead ...	✓
Bridge, After Bulkhead ...	SHIFTING BOARDS ¾" THICK IN CHANNELS FULL HEIGHT OF OPENING. RIVETED TO BULKHEAD. 2" SOLID WOOD DOORS TO SIDEHOUSES WORKABLE FROM BOTH SIDES. ✓
Bridge, Forward Bulkhead ...	NO OPENINGS. ✓
Forecastle Bulkhead ...	SHIFTING BOARDS ¾" THICK IN CHANNELS FULL HEIGHT & RIVETED TO BULKHEAD & BOLTED PLATE 12" APART. NOT PASSING THROUGH BULKHEAD. ✓
Exposed Machinery Casings on Freeboard ...	STEEL DOORS, WORKABLE FROM BOTH SIDES. ✓
Exposed Machinery Casings on Superstructure Decks ...	STEEL DOORS, WORKABLE FROM BOTH SIDES. ✓
Machinery Casings within Superstructures not fitted with Class I Closing Appliances ...	STEEL DOORS TO COAL SHOOT WORKABLE FROM TWO SIDES ONLY. ✓
Deckhouses on Flush Deck Ships ...	STEEL DOORS WORKABLE FROM BOTH SIDES. ✓

PARTICULARS OF PROTECTION TO OPENINGS, ETC.

The following diagrams should be used to indicate the positions of cargo and coaling hatchways, gangway, cargo and coaling ports, ventilators, companionways, etc., which would affect the seaworthiness of the ship:—



Particulars of fiddle, funnel and ventilator coamings, engine room skylight and other openings in machinery casing tops and their means of closing:—

FIDDLEY, FUNNEL & VENTILATOR COAMINGS EFFICIENTLY CONSTRUCTED.
FIDDLEY GRATINGS CLOSED WITH HINGED STEEL COVERS.
ENGINE ROOM SKYLIGHT OF STEEL EFFICIENTLY CONSTRUCTED.

Particulars of Flush Bunker Scuttles:— NONE

Particulars of Companionways:— NONE

Particulars of Ventilators in exposed positions on freeboard and superstructure decks:—

POOP DECK—
4-15" DIA TO PASSAGE IN CREW SPACE COAMING 30" x 37"
3-12" " " STEERING GEAR STORE " 30" x 37"
1-22" " " HOLD " 30" x 40"
1-12" " " STORE " 30" x 37"
BRIDGE DECK—
2-18" DIA TO HOLD COAMING 30" x 40"
2-18" " " TWIN DKS " 30" x 40"
2-20" " " DERRICK POSTS TO HOLD " 30" x 40"
2-15" " " TO BUNKERS TWIN DKS " 30" x 37"
4-7" " " ACCOMMODATION " 30" x 32"
1-9" " " STORE " 30" x 32"
FORECASTLE DECK—
1-22" DIA TO HOLD COAMING 36" x 40"
2-18" " " TWIN DKS " 36" x 40"
1-10" " " STORE " 36" x 32"
1-9" " " CHAIN LOCKER " 36" x 32"
UPPER DECK FORWARD WELL—
6-18" DIA TO HOLD & TWIN DKS COAMING 4'0" x 40"
2-24" DERRICK POSTS TO HOLD.
UPPER DECK AFTER WELL—
9-18" DIA TO HOLD & TWIN DKS COAMING 4'0" x 40"
4-15" " " DEEP TANK " 4'0" x 40"
1-12" " " TUNNEL " 3'0" x 38"
ALL VENTILATORS CONSTRUCTED TO RULE REQUIREMENTS.
& PROVIDED WITH WOOD PLUGS & CANVAS COVERS.
COAMINGS OVER 3'0" IN HEIGHT STAYED.

Particulars of Air Pipes in exposed positions on freeboard, raised quarter, or superstructure decks:—

POOP DECK—
2-2" DIA TO AFT PEAK TANK.
BRIDGE DECK—
8-2 1/2" DIA TO DOUBLE BOTTOM TANKS.
UPPER DECK AFTER WELL—
8-2 1/2" DIA TO DOUBLE BOTTOM TANKS.
1-2" " " COFFERDAM.
UPPER DECK FORWARD WELL—
4-2 1/2" DIA TO DOUBLE BOTTOM TANKS.
FORECASTLE DECK—
1-3 1/2" DIA TO NO.1 TANK.
1-3" " " FORE PEAK TANK.
AIR PIPES IN WELLS 36" IN HEIGHT.
" " ON POOP, BRIDGE & FORE 18" IN HEIGHT.
ALL AIR PIPES FITTED WITH WOOD PLUGS.

Particulars of Gangway Cargo and Coaling Ports:— NONE

Particulars of Scuppers and Sanitary Discharge Pipes:—

SCUPPERS ON FREEBOARD DECK:— STRINGER BAR CUT IN WELLS. IN POOP, BRIDGE & FORE SPACES SCUPPERS LED THROUGH SHIP'S SIDE & FITTED WITH STORM VALVES. BOLTED PLATE COVERS OR BRASS PLUGS FITTED AT INNER END.
ALL SANITARY DISCHARGES PASSING THROUGH SHIP'S SIDE FITTED WITH STORM VALVES.

Particulars of Side Scuttles:—

SIDE LIGHTS IN POOP, BRIDGE & FORECASTLE SPACES, 10" DIA, OF SUBSTANTIAL CONSTRUCTION.
& FITTED WITH HINGED DEADLIGHTS.

Vertical distance of Sill of lowest Side Scuttle above top of keel. NO SIDE LIGHTS BELOW FREEBOARD DECK.

Particulars of Guard Rails:—

POOP FORECASTLE DKS— RAILS 2'6" HIGH WITH 4 RODS & STANCHIONS SPACED ABOUT 4'6" APART.
BRIDGE DECK— STEEL BALWARK 3'6" HIGH STRONGLY CONSTRUCTED WITH OPEN RAILS IN WAY OF HATCH.

Particulars of Gangways, Lifelines, etc.:—

LIFELINES PROVIDED IN FORE & AFT WELLS FOR THE PROTECTION OF THE CREW.

Particulars of Freeing Arrangements.

	Length of Bulwark	Height of Bulwark	Size of Freeing Ports	Number each side	Area each side	Rule area each side
After Well ...	108'-0"	4'-0"	4'-0" x 16"	5	25 ^{ft}	21.60 ^{ft}
Forward Well ...	103.5	4'-0"	4'-0" x 16"	5	25 ^{ft}	20.70 ^{ft}
State position of each freeing port ... (F. and A. position and height above deck edge)						
After Well:— From Bridge End 4'-21'-31'-64'-82' From Bridge Front 6'-17'-42'-53'-63' } 15' Above Dk						
State whether the freeing ports are fitted with shutters, bars, or rails, and give particulars of such:— ONE BAR FITTED.						
Additional area where sheer is less than standard.						

PARTICULARS OF PROTECTION TO OPENINGS, ETC.

HATCHWAYS ON FREEBOARD AND SUPERSTRUCTURE DECKS.							
Description of Hatchway	No. 1.	No. 2	UPPER Dk No. 3	No. 4	BRIDGED Dk No. 5	No. 6	
Dimensions of Hatchway	20'3" x 17'	45'0" x 17'0"	11'3" x 17'0"	45'0" x 17'0"	18'0" x 17'0"	9'0" x 17'0"	COALING HATCHES
COAMINGS	Height above Deck ... 30"	30"	18"	30"	30"	30"	BRIDGE Dk
	Thickness Sides ... 55	55	48	55	55	55	13'6" x 4'0" P+S & 6'8" x 4'0" P+S
	Thickness Ends ... 55	55	40	55	55	55	COAMING - 30" x 48 STIFFENED AT 12" HATCH
	Stiffeners ... 7 x 3 1/2 x 55 BA.	7 x 3 x 40	7 x 3 x 40	7 x 3 1/2 x 55 BA	7 x 3 1/2 x 55 BA	7 x 3 1/2 x 55 BA	FITTED WITH 3" WOOD COVERS, 2 TARPULINS & CLEATS 24" APART & USUAL BATTENING ARRANGEMENTS
	Brackets, Stays ... 2" Round Iron	2	✓	✓	✓	✓	UPPER Dk INSIDE BRIDGE
HATCH BEAMS	Number ... 3	9	1 1/2	9	3	ONE	4'6" x 5'0" PORT STARBOARD
	Spacing ... 5'0 3/4	4'6"	5'7 1/2	4'6"	4'6"	4'6"	COAMING 30" x 40. FITTED WITH 3" WOOD COVERS
	Scantling and Sketch ... 15 x 35	15 x 30	15 x 36	15 x 30	15 x 30	15 x 32	ONE TARPULIN & CLEATS 24" APART & USUAL BATTENING ARRANGEMENTS
	Bearing Surface ... 4 x 3 x 42	4 x 3 x 40	5 x 3 x 40	4 x 3 x 40	4 x 3 x 40	4 x 3 x 42	4'6" x 4'0" P+S
FORE AND AFTERS	Number ...	10" B.A.	7" B.A.				COAMING 9 x 3 x 40 BA. FITTED WITH 3" WOOD COVERS, ONE TARPULIN, CLEATS 24" APART & USUAL BATTENING ARRANGEMENTS
	Spacing ...						HATCHES TO FORWARD STORE
	Unsupported Lengths ...						ON FORECASTLE 3'0" x 2'0"
	Scantling and Sketch ...						COAMING 18" x 45 FITTED WITH W.T STEEL COVER 40" THICK WITH BOLTS SPACED 4 1/2" APART & TRUNKED TO UPPER Dk
	Bearing Surface ...						IN FOLET WINDS ON UPPER Dk 3'0" x 3'0"
HATCH COVERS	Material ... W.P.	W.P.	W.P.	W.P.	W.P.	W.P.	COAMING 9 x 3 x 40 BA. WITH 3" WOOD COVERS, ONE TARPULIN & CLEATS 24" APART & USUAL BATTENING ARRANGEMENTS
	Thickness ... 3"	3	3	3	3	3	HATCH TO STORE ON POOP Dk 3'6" x 3'6"
	How fitted ... F+A	F+A	F+A	F+A	F+A	F+A	COAMING 18" x 40. FITTED WITH 3" COVERS (WOOD) 2 TARPULINS, CLEATS 24" APART & USUAL BATTENING ARRANGEMENTS
	Bearing Surface ... 3"	3	3	3	3	3	COALING HATCH TO COAL SHOOT ON BOAT Dk
Spacing of Cleats	24	24	24	24	24	24	16'0" x 5'0" COAMING 9 x 3 x 40 BA, 3" WOOD COVERS, TWO TARPULINS, CLEATS 24" APART
Number of Tarpaulins	2	2	1	2	2	2	ALL WOOD COVERS HAVE 3" BEARING SURFACE

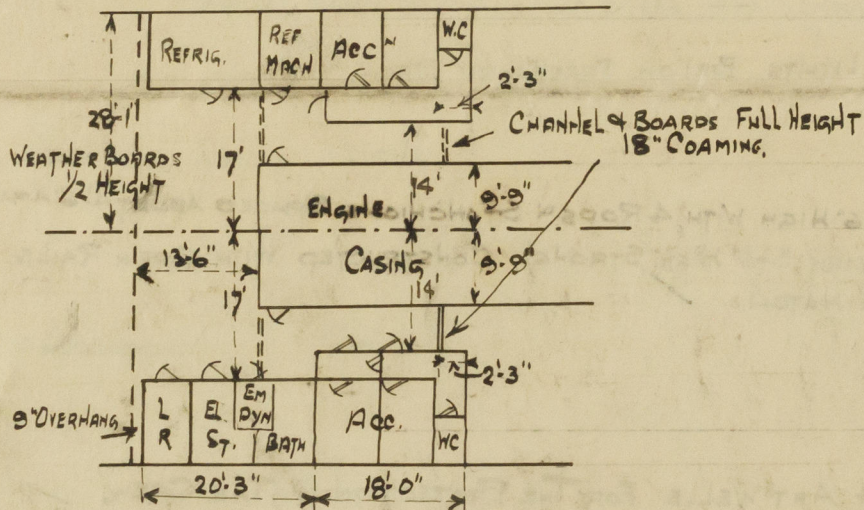
*Are wood fore and afters steel shod at all bearing surfaces? ☒ YES

Are battens and wedges efficient and in good condition? ☒ YES

Are tarpaulins in good condition and in accordance with rule requirements? ☒ YES

Are lashings provided in accordance with rule requirements? ☒ YES

Particulars of any special features: — SKETCH OF BRIDGE END



Endorsement at first survey and at surveys for renewal of Certificate: —

The fittings and appliances are in accordance with the particulars shown on this form (or as now modified) and are in good condition.



© 2020

Lloyd's Register Foundation