

Nº 1120

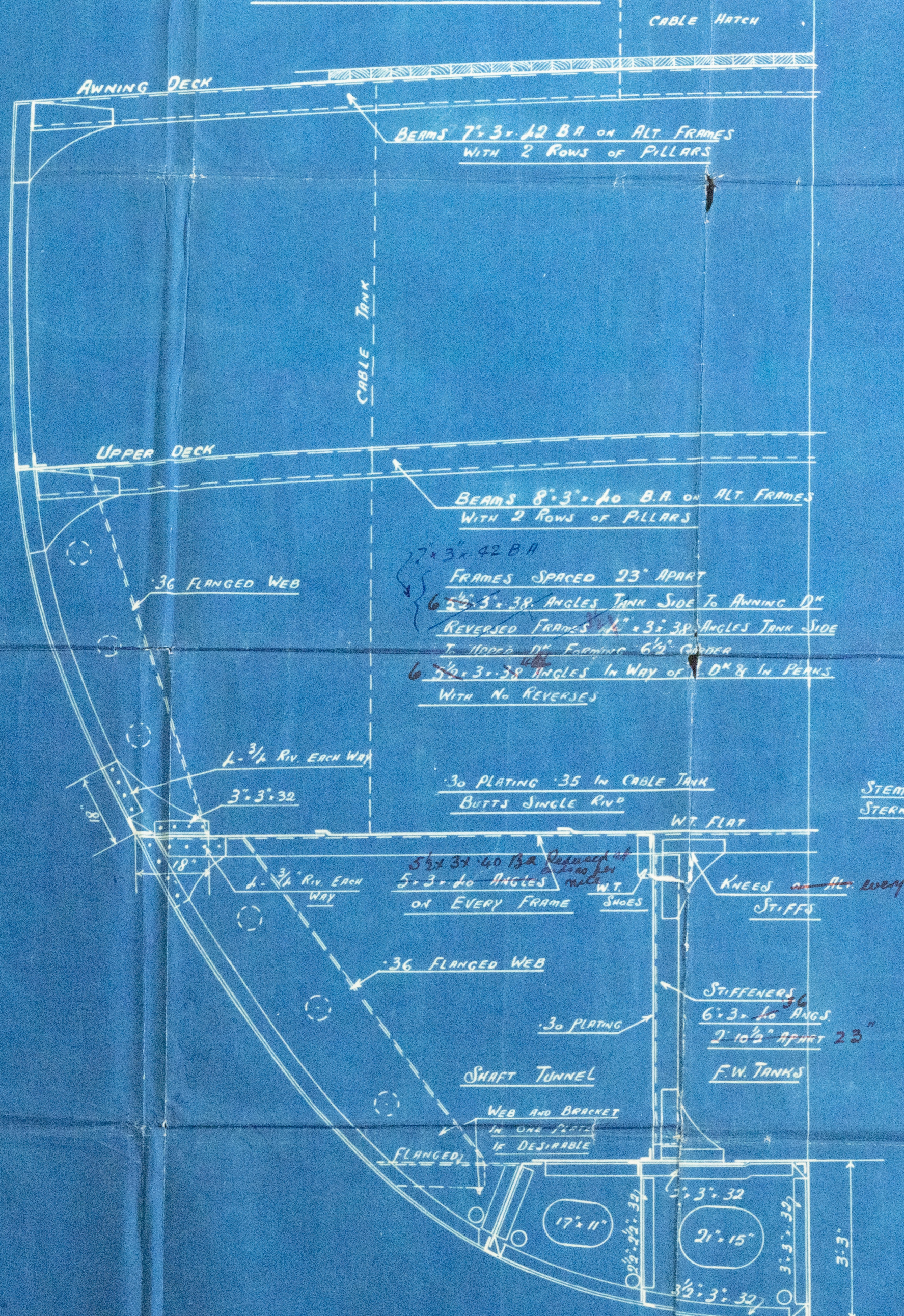
MIDSHIP SECTION

DIMENSIONS 270' 10" PP x 36' 10" B.M.L. x 24' 9" D.M.L. To A.W.N. D.
To CLASS 100 A.1. AT LLOYDS ANNING Dⁿ STRENGTHENED FOR 20' 6" DRAFT
APPROX. UNDER DECK TONNAGE 1690

EQUIPMENT

LONG. Nº	14622	SCALE 1/4" = 1 FOOT
TWEEN D ⁿ s	1552	
D ⁿ HOUSES & CHIMNEYS	255	TWIN SCREW
CAPT ⁿ HOUSE	92	
EQUIPMENT Nº 16551	16670	
3 BOWER ANCHORS EACH 3 1/2 CWTs	STEELLESS 94 CWTs COLL	
1 STREAM Anchor	8 1/2 CWTs	EX STRUCK
1 HEDGE	1 1/2 "	"
210 FMS. OF 1 1/16" STUO CHAIN CABLE		
75 " " 1/2" STEEL WIRE STREAM		
90 " " 3/4" " TOWLINE		
2 AT 30 " " 2 1/4" HAWSEERS		
" " 30 " " 5" MANILLA		

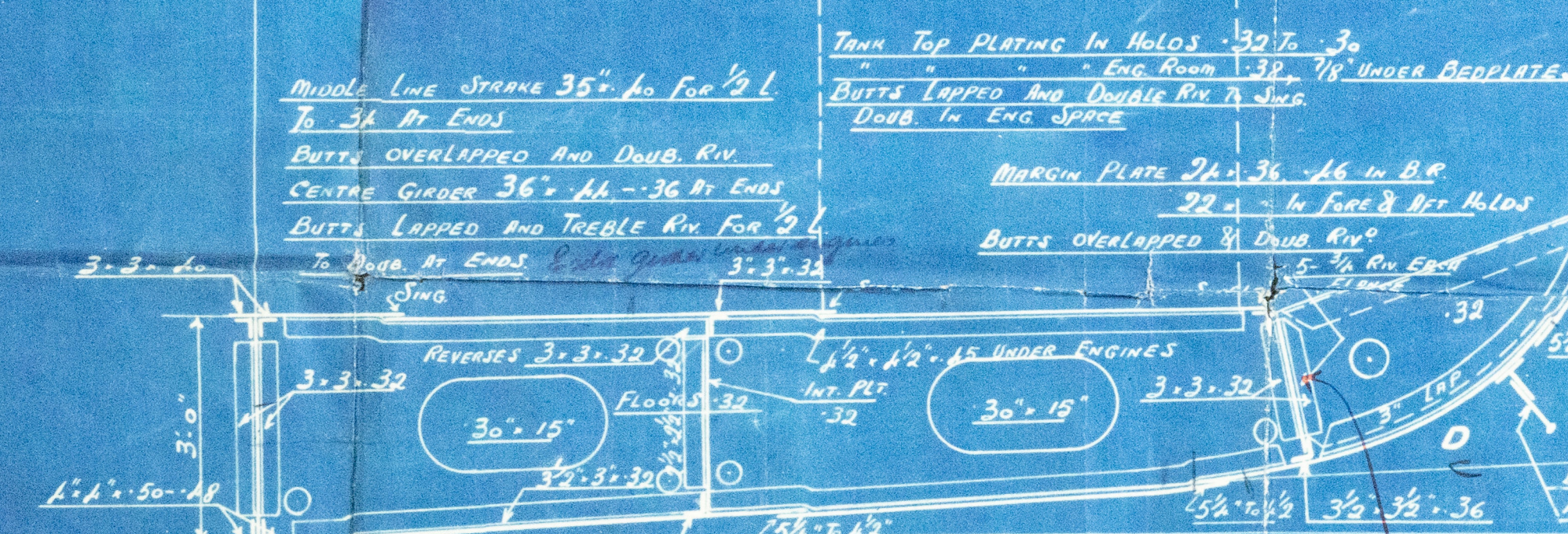
SECTION THROUGH AFTER HOLD



SEE PROFILE FOR PILLARS

9' 2 1/2" IN SHIP.

STEM 8' 2 1/2" ROLLED STEEL
STERN POST 8' 2 1/2"



FLAT PLATE KEEL 13' 60
GUSSETED TO TANK TOP
SEE SEPARATE APPROVED PLAN
SECTION THRU BOILER ROOM
SHIPPING OPEN FLUE 16" HIGH
5' 3 1/2" x 30
1' 2" x 15' 16 SINGLE
FLOORS 22' 50
32' 3' 32
3' 3' 32
SIDE KEELSON ANG. 5' 3 1/2" x 40

NUMERALS

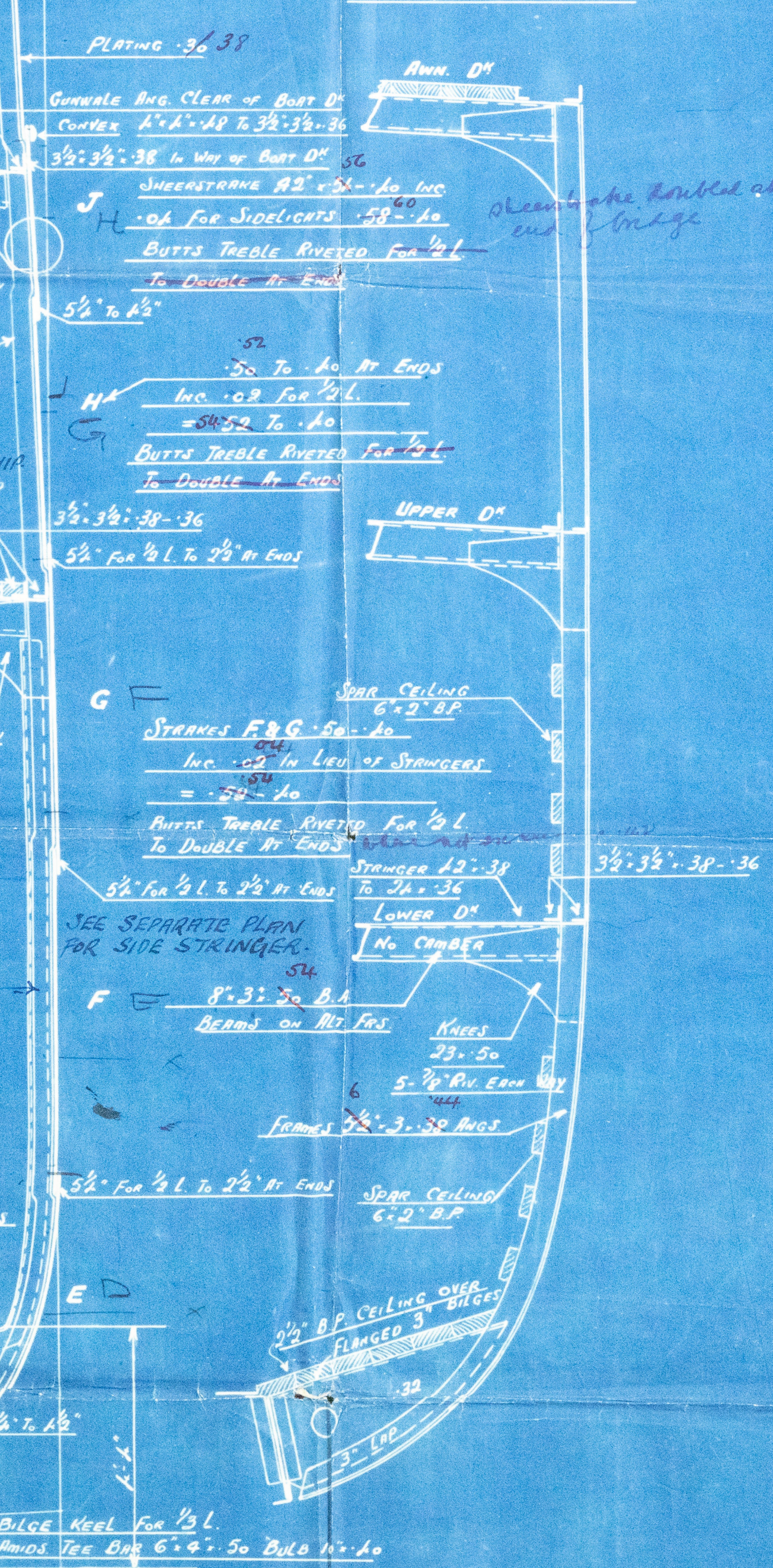
BREADTH	36' 83
DEPTH	17' 16
B + D	53' 99
LENGTH	270' 83
L x (B + D)	14622

PROPORTIONS

DEPTH TO LENGTH 10.9 TO A.W.N. Dⁿ

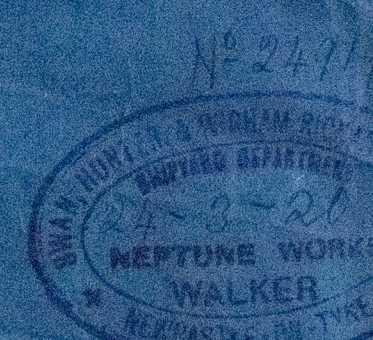
d TO UPPER Dⁿ 14.16
" " LOWER " 7.16

SECTION THRU FORE HOLDS (IN WAY OF LOWER Dⁿ)



BUTTS OF SHELL QUINDRUPLE
RIVETED FOR 1/2" TEN WHERE
ABOVE RULE LIMIT IN WIDTH

Two strokes rest the keel
to maintain midship thickness
to meet friction of collision
bolts.



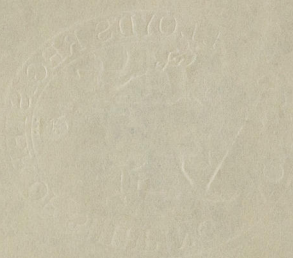
1104



© 2020

Lloyd's Register
Foundation

C42



Swan Hunter 1120

Midship Section

" All America "

002435-002441-0003



© 2020

Lloyd's Register
Foundation

S/S ALL AMERICA
NEWCASTLE ON TYNE.

Report No. 44869

Mass from Stanley's Virginia Richmond

No 1120

Plan of Midship Section

No 1

002435-002441-0003

002435-002441-0003



© 2020

Lloyd's Register
Foundation