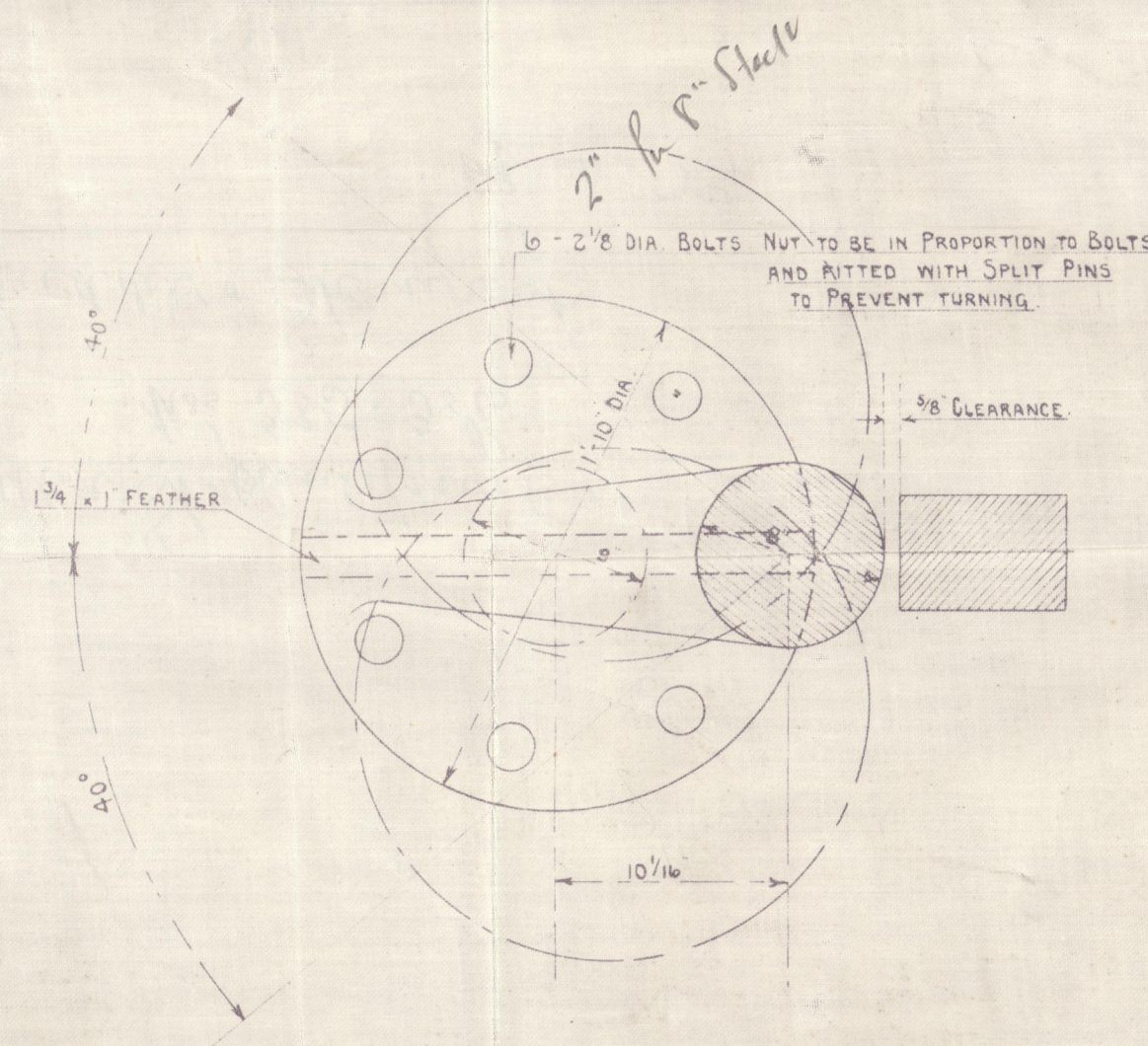
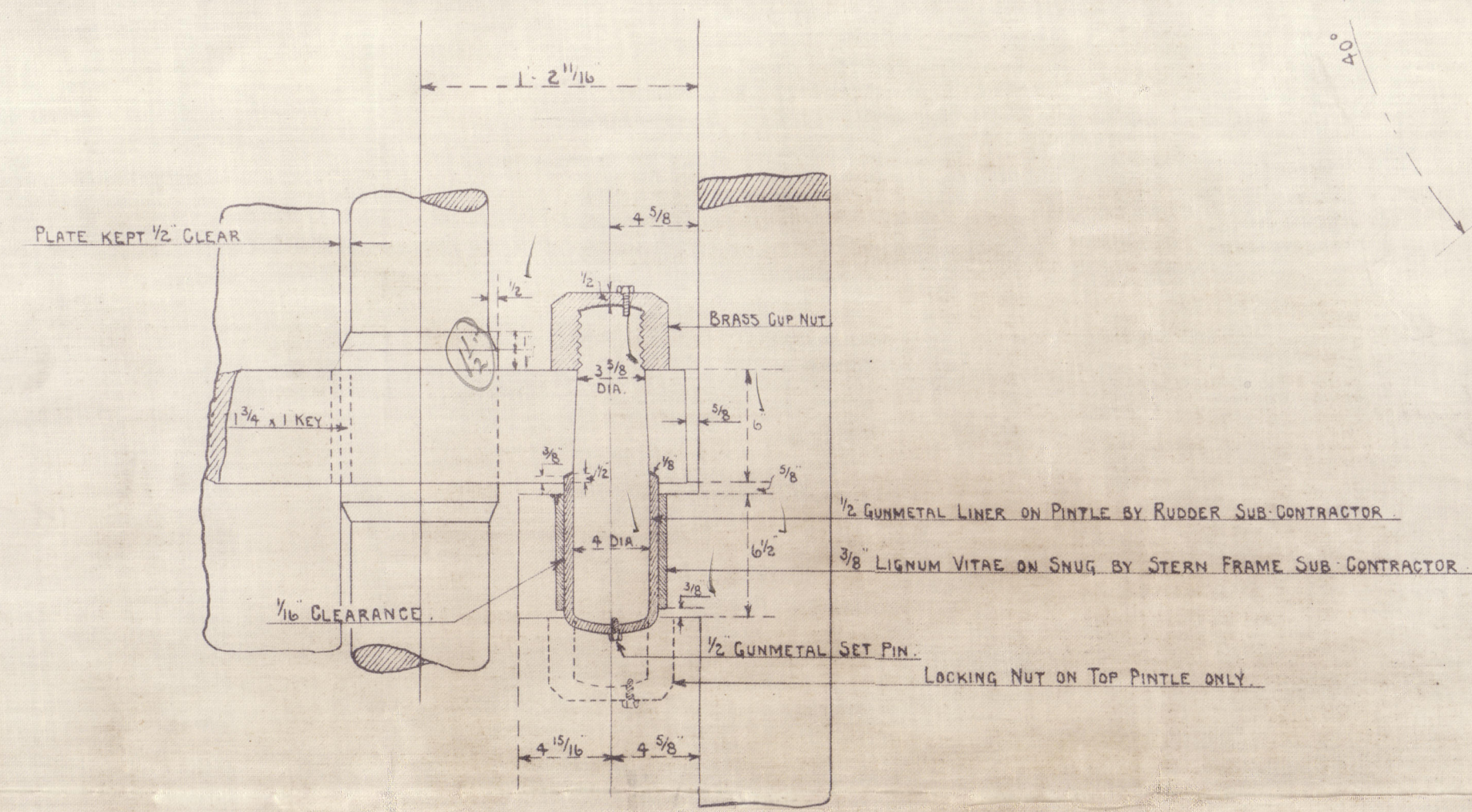


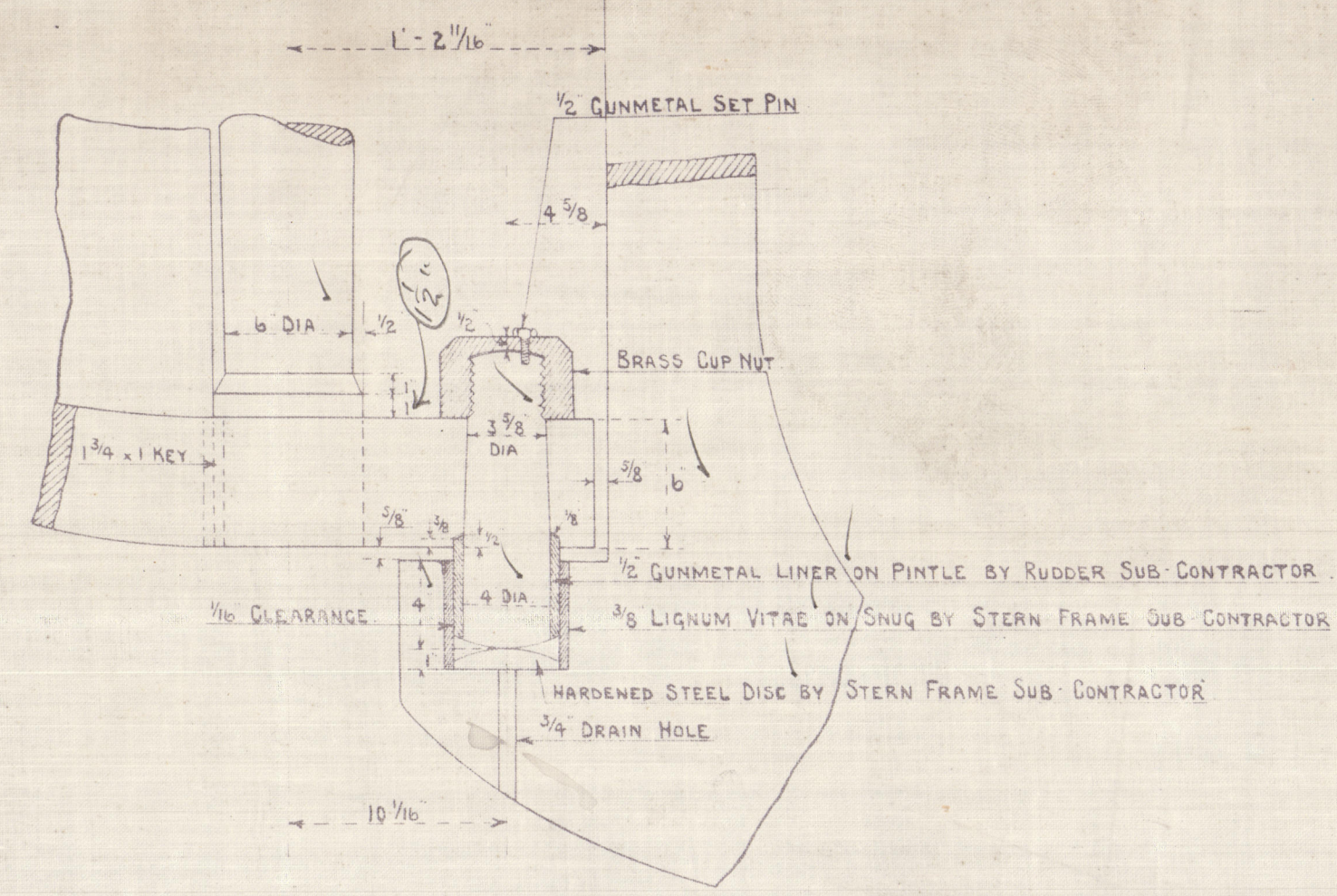
RIVETS TO HAVE SNAP HEADS AND POINTS.



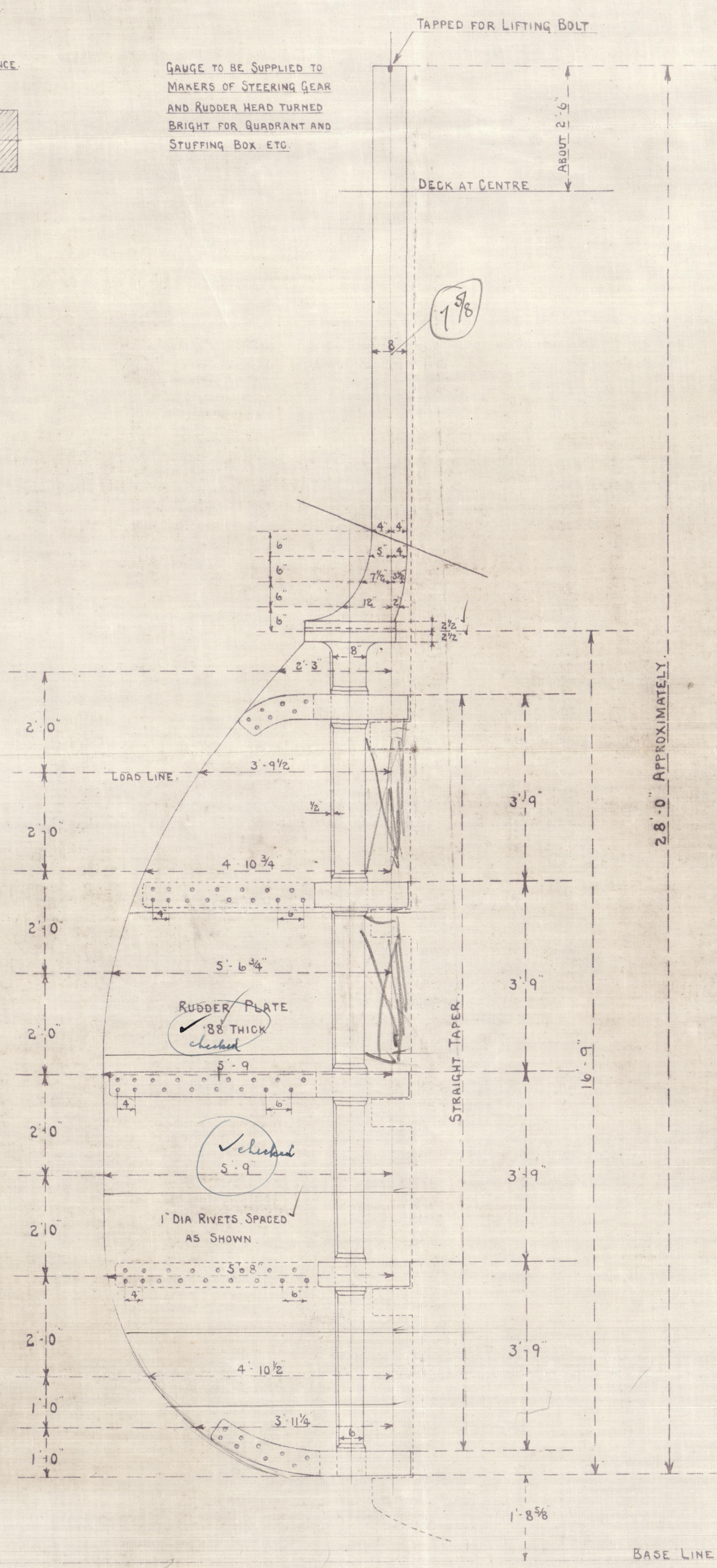
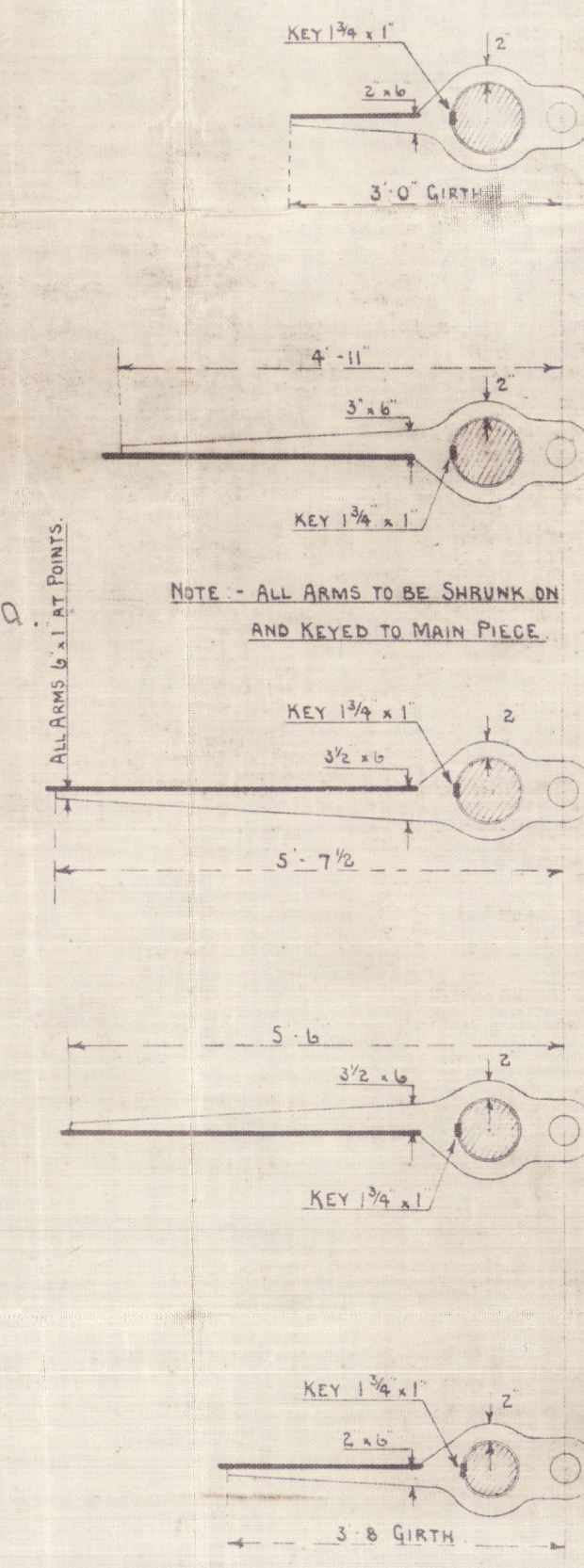
DETAIL OF COUPLING
SCALE 1 1/2" = 1 FOOT.



DETAIL OF PINTLES
SCALE 1 1/2" = 1 FOOT



DETAIL OF HEEL PINTLE
SCALE 1 1/2" = 1 FOOT



SCALE $\frac{1}{2}" = 1 \text{ FOOT.}$

GREAT CARE TO BE TAKEN WHEN BORING PINTLES TO HAVE THEIR CENTRES PERFECTLY FAIR WITH CENTRE OF STOCK BOTH FORE AND AFT AND ACROSS.


OUTER ROW OF RIVETS IN STERNPOST 1 1/8" SPACED 4" DIA. APART. HOLES 1 3/16" DIA.
4 Holes B&O

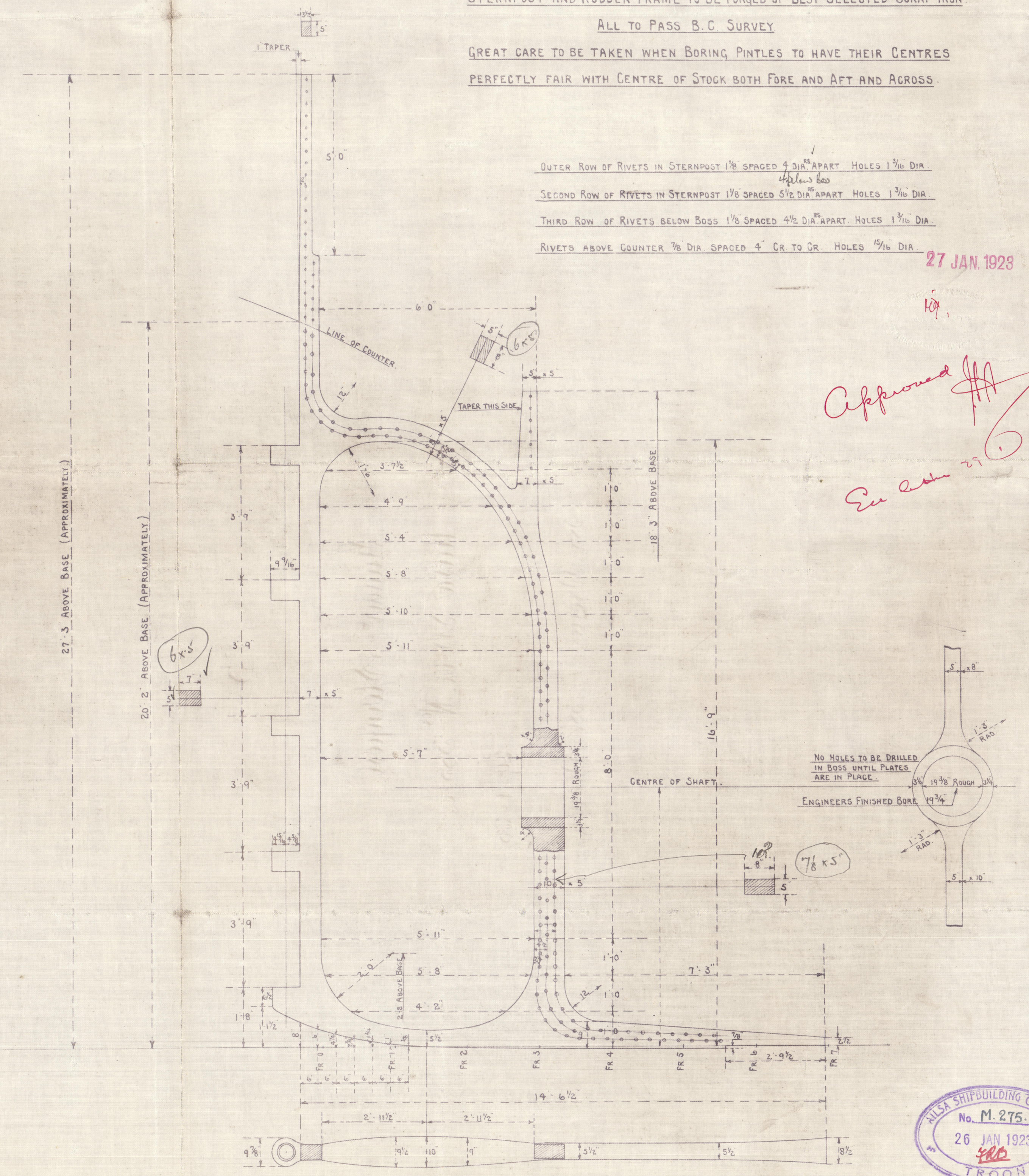
SECOND ROW OF RIVETS IN STERNPOST 1 1/8" SPACED 5 1/2" DIA. APART. HOLES 1 3/16" DIA.

THIRD ROW OF RIVETS BELOW BOSS 1 1/8" SPACED 4 1/2" DIA. APART. HOLES 1 3/16" DIA.

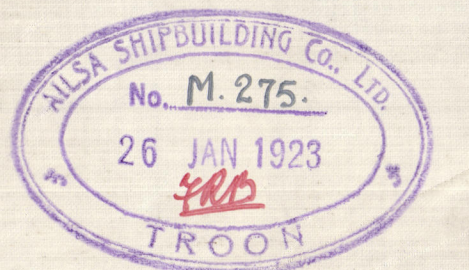
RIVETS ABOVE COUNTER 7/8" DIA. SPACED 4" CR. TO CR. HOLES 15/16" DIA.

27 JAN. 1923

Approved 
 Executed 29 1 23



NOTE:- MOULDS FOR HEEL PIECE WILL BE SENT.



Alsa 385/6

Rudder & Sternpost

Bag

Alsa Shipbuilding Co. Ltd.

Nos 385-386

Rudder & Sternpost

29.1.83

"Brora"

"Beaully"

5

0021435-0021441-0093



© 2020

Lloyd's Register
Foundation

5

Rudder Sternpost

Milsa S.B. Co. N^{os} 385-6.

29-1-23.

385 "Byrona".

386 "Beaully"



© 2020

Lloyd's Register
Foundation

002435-002441-0093