

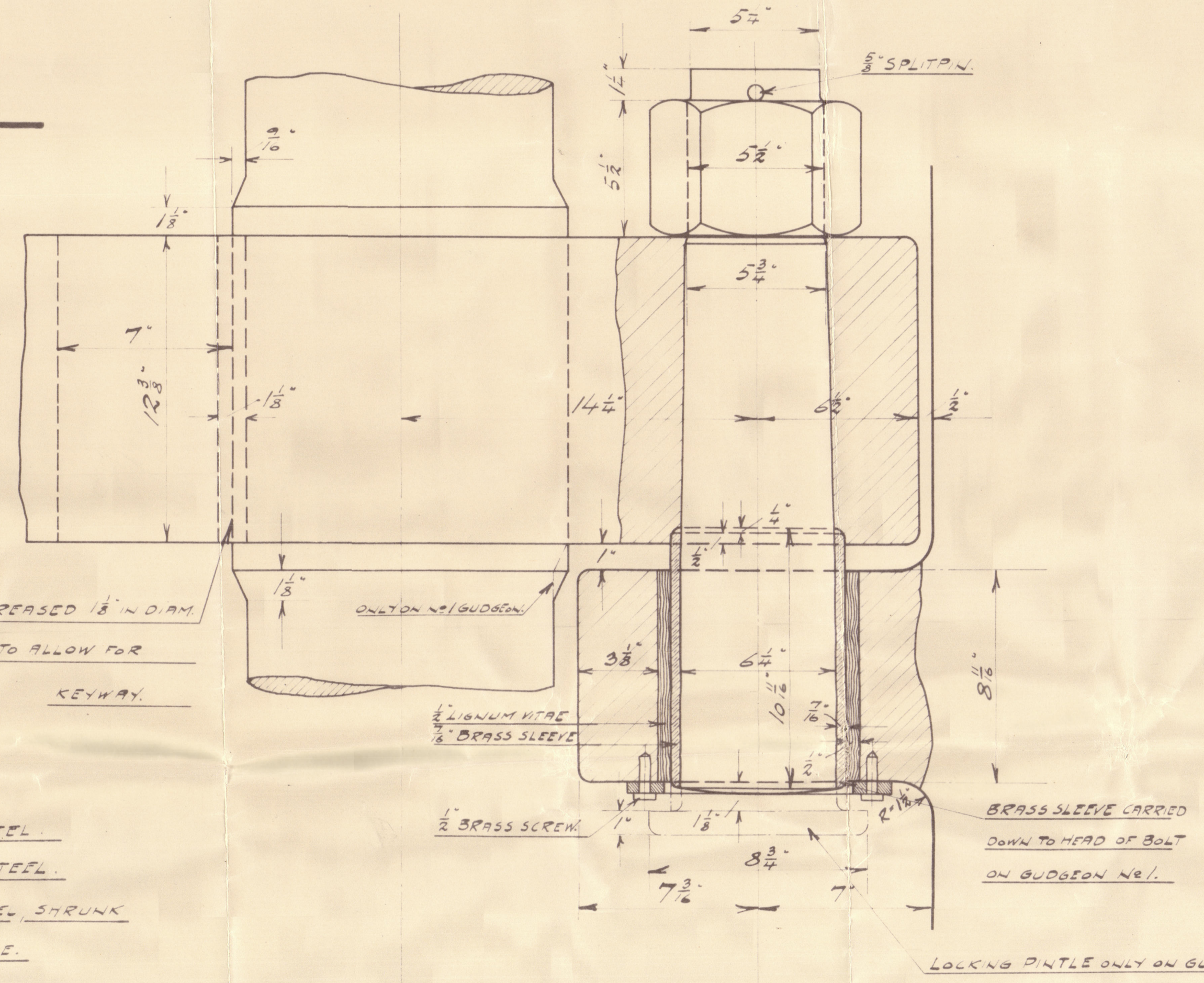
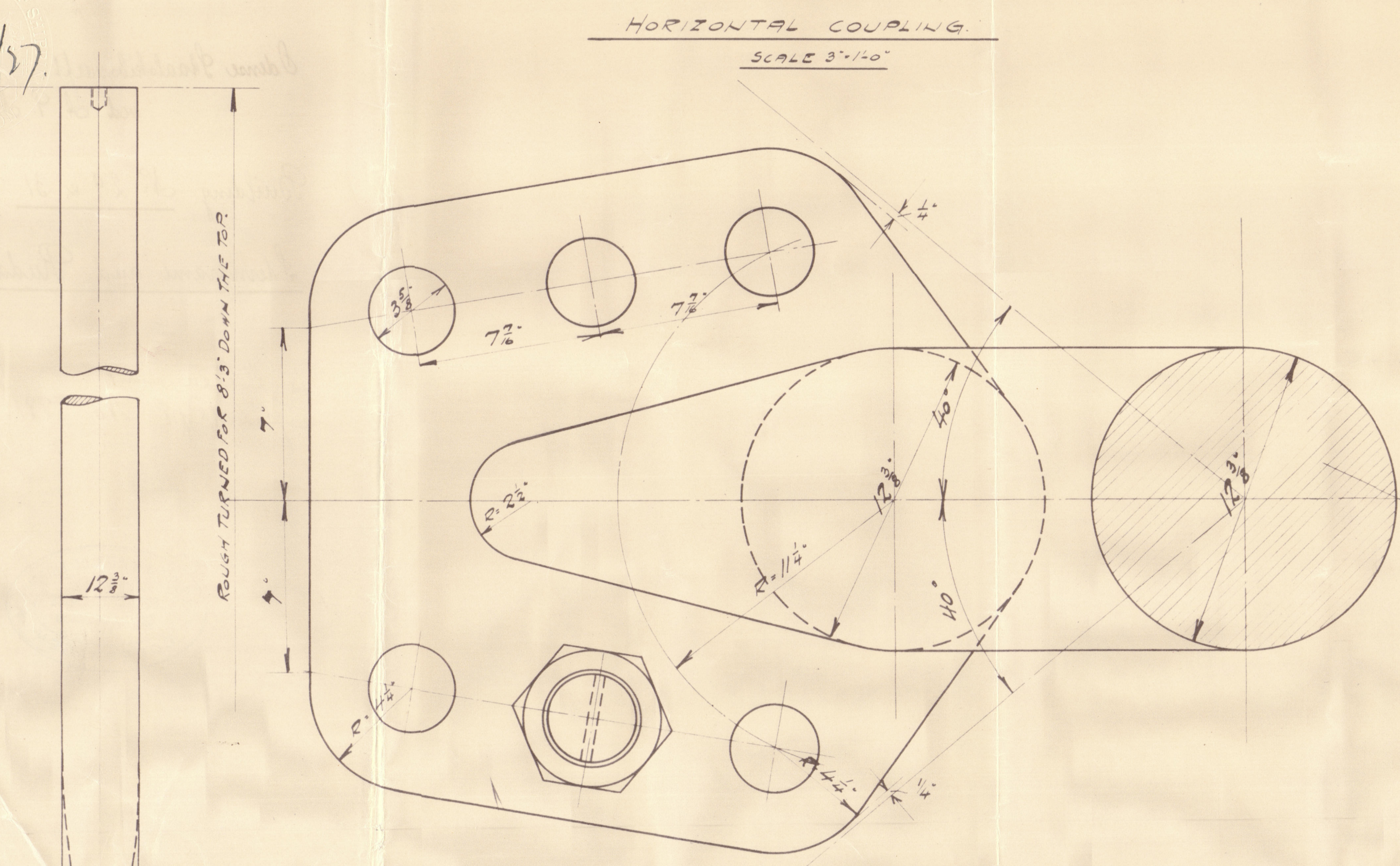
23/9/27.

BUILDING N<sup>o</sup> 29&31.

## STERNFRAME AND RUDDER.

SCALE  $\frac{3}{4}$ " = 3' - 0"

SKETCH OF NO. 1, NO. 3 AND NO. 4 GUDGEON.  
SCALE 3" = 1'-0"



MATERIAL

STEREFRAME OF CAST STEEL

RUDDERSTOCK OF FORGED STEEL

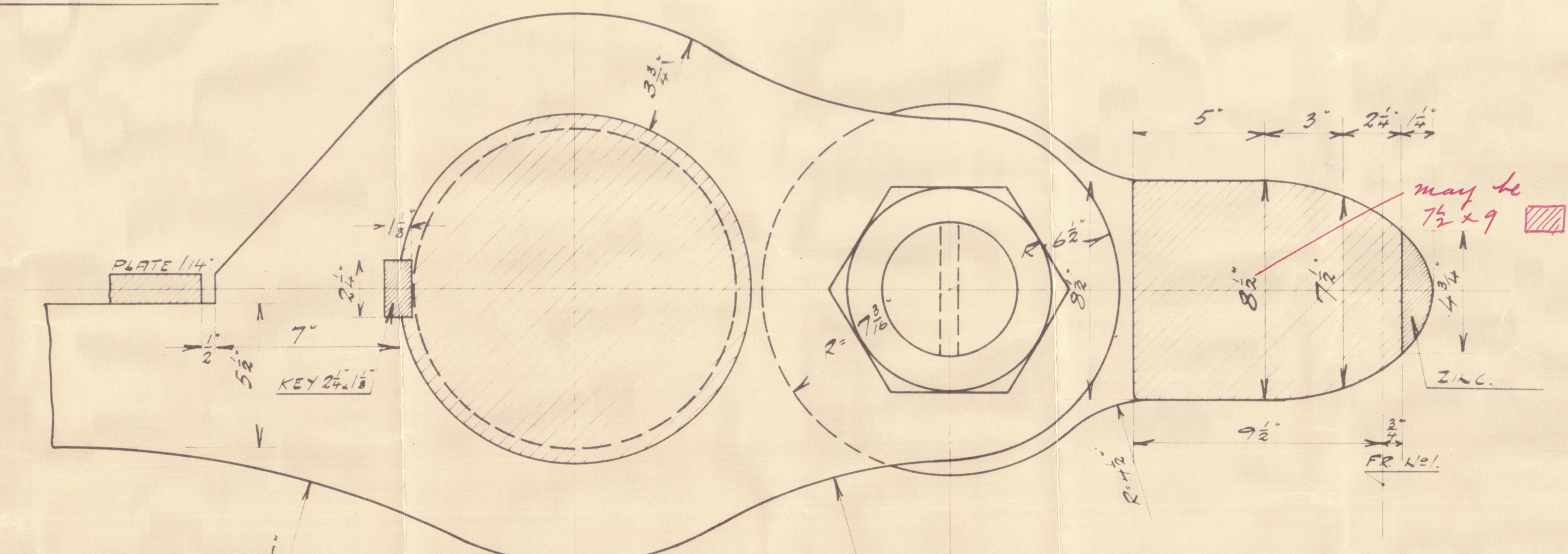
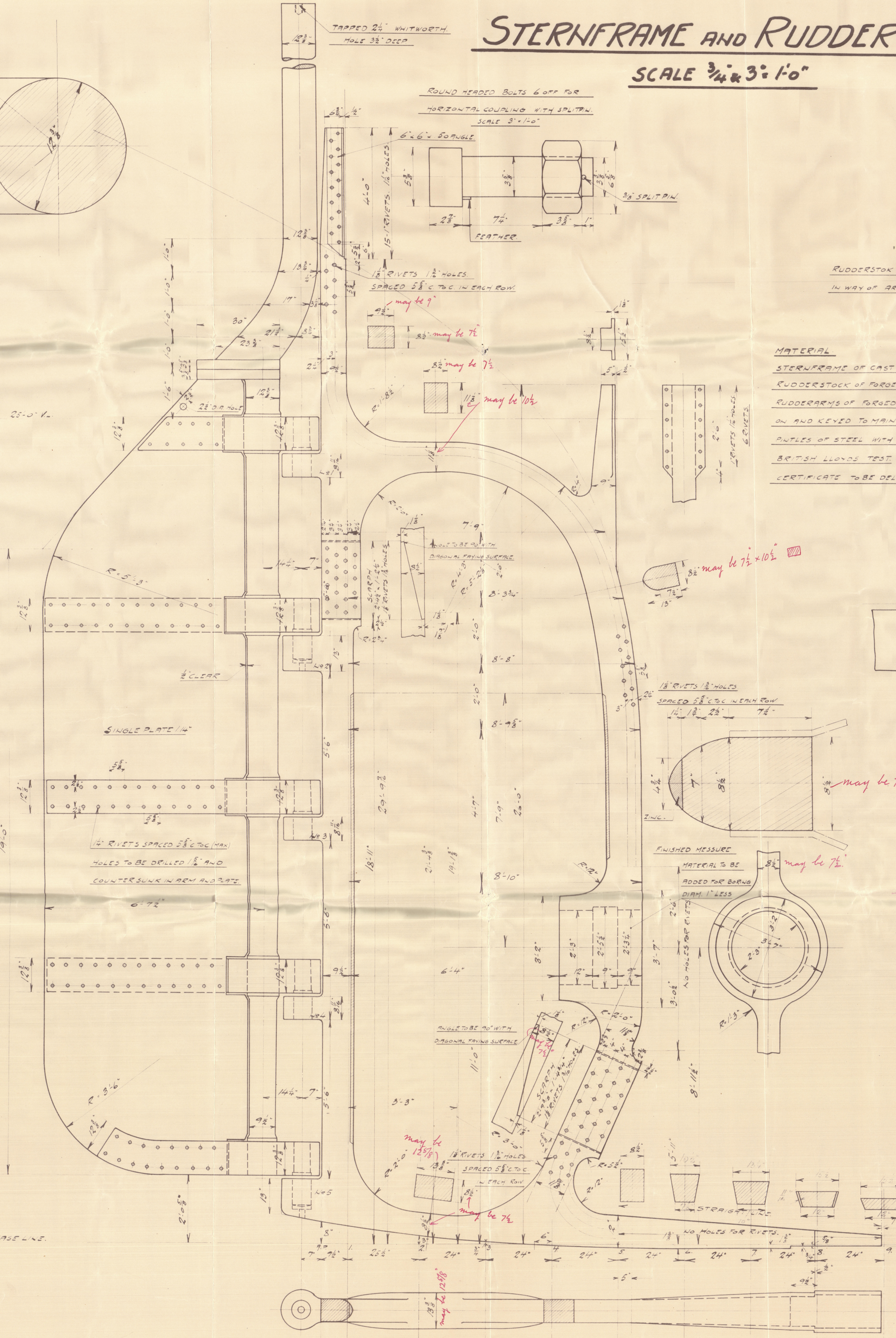
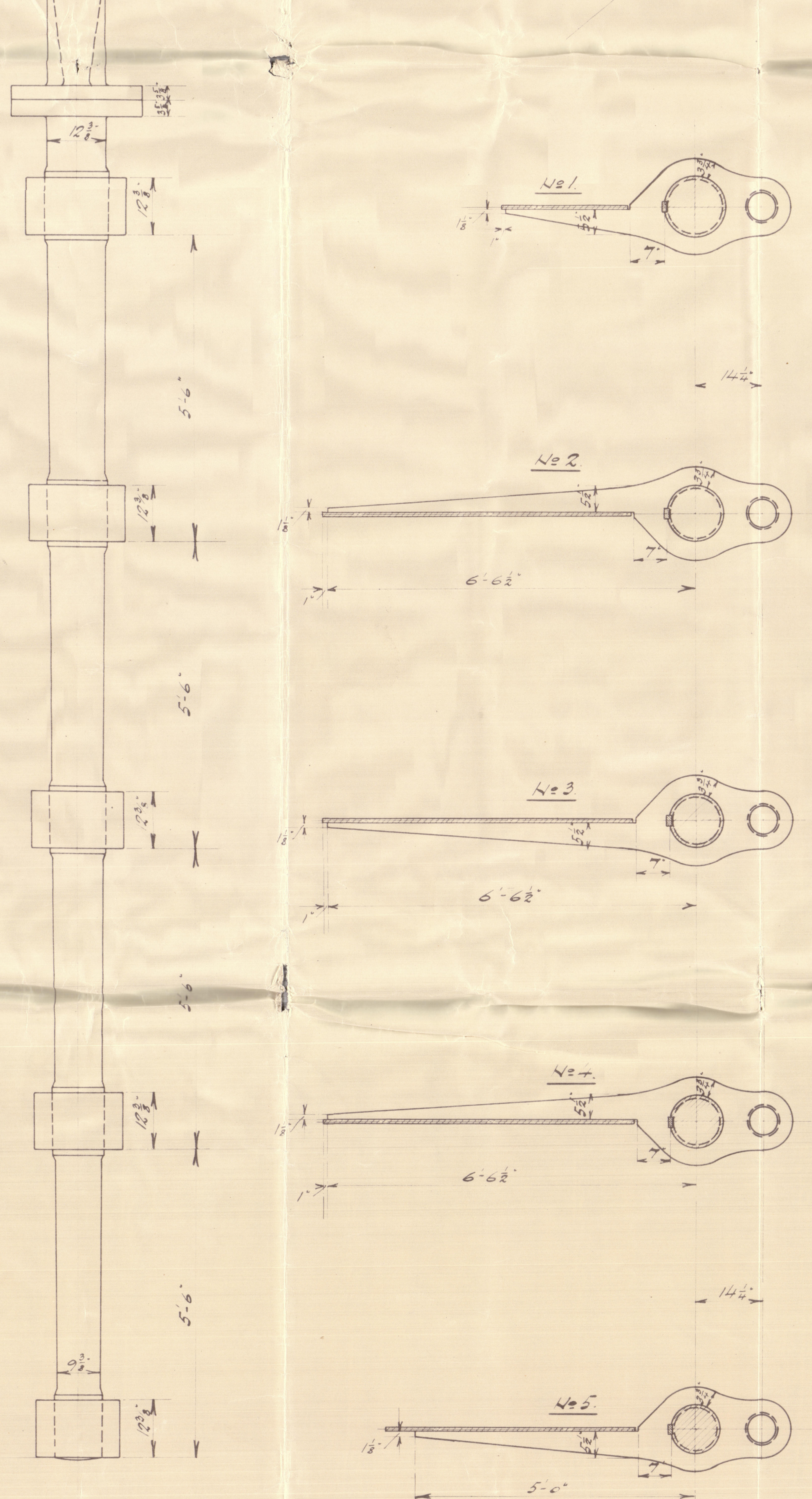
RUDDERARMS OF FORGED STEEL, SHUNK

ON AND KEVED TO MAINPIECE.

ANGLES OF STEEL WITH BRASS SLEEVE

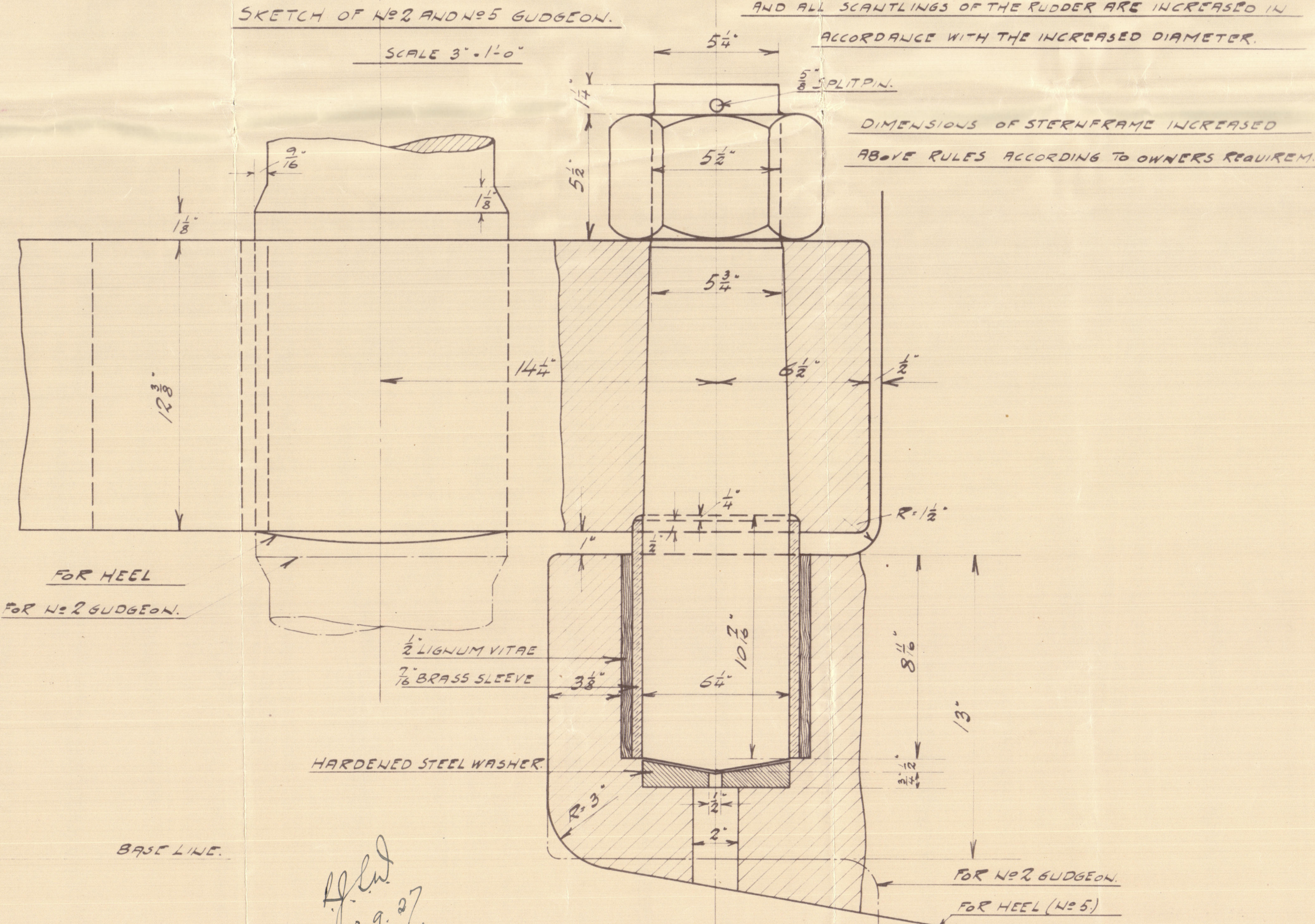
BRITISH LLOYDS TEST.

CERTIFICATE TO BE DELIVERED.



AREA OF RUDDER ~~152.5~~ SQUARE FEET.  
CENTRE OF GRAVITY FROM # OF PINTLES ~~4.09~~ FEET.  
 $A \times D = 152.5 \times 4.09 = 623.7$   
SPEED = 11.25 KNOTS.

DIAMETER OF RUDDERHEAD INCREASED 10% ABOVE THE RE-  
QUIREMENTS OF THE RULES FOR THE BUILDING OF STEEL VESSELS  
AND ALL SCANTLINGS OF THE RUDDER ARE INCREASED IN  
ACCORDANCE WITH THE INCREASED DIAMETER.



ODENSE STAALSKIBSVÆRF  
VED A. P. MØLLER

© 2020  
29-1927  
STERNFRAME  
AND RUDDER  
Lloyd's Register

002435-002441-0127

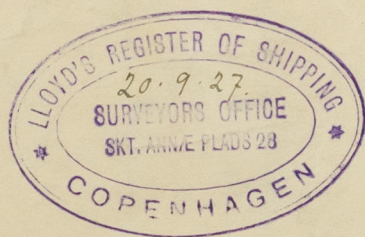


Odense Staalskibsvarft  
ord A. P. Möller

Building N<sup>o</sup> 29 & 31.

Sternframe and Rudder

m/s. "Beaumont"  
Spm. Rpt. No. 7881.



© 2020

Deput to Odense

Lloyd's Register  
Foundation

002435-002441-0127