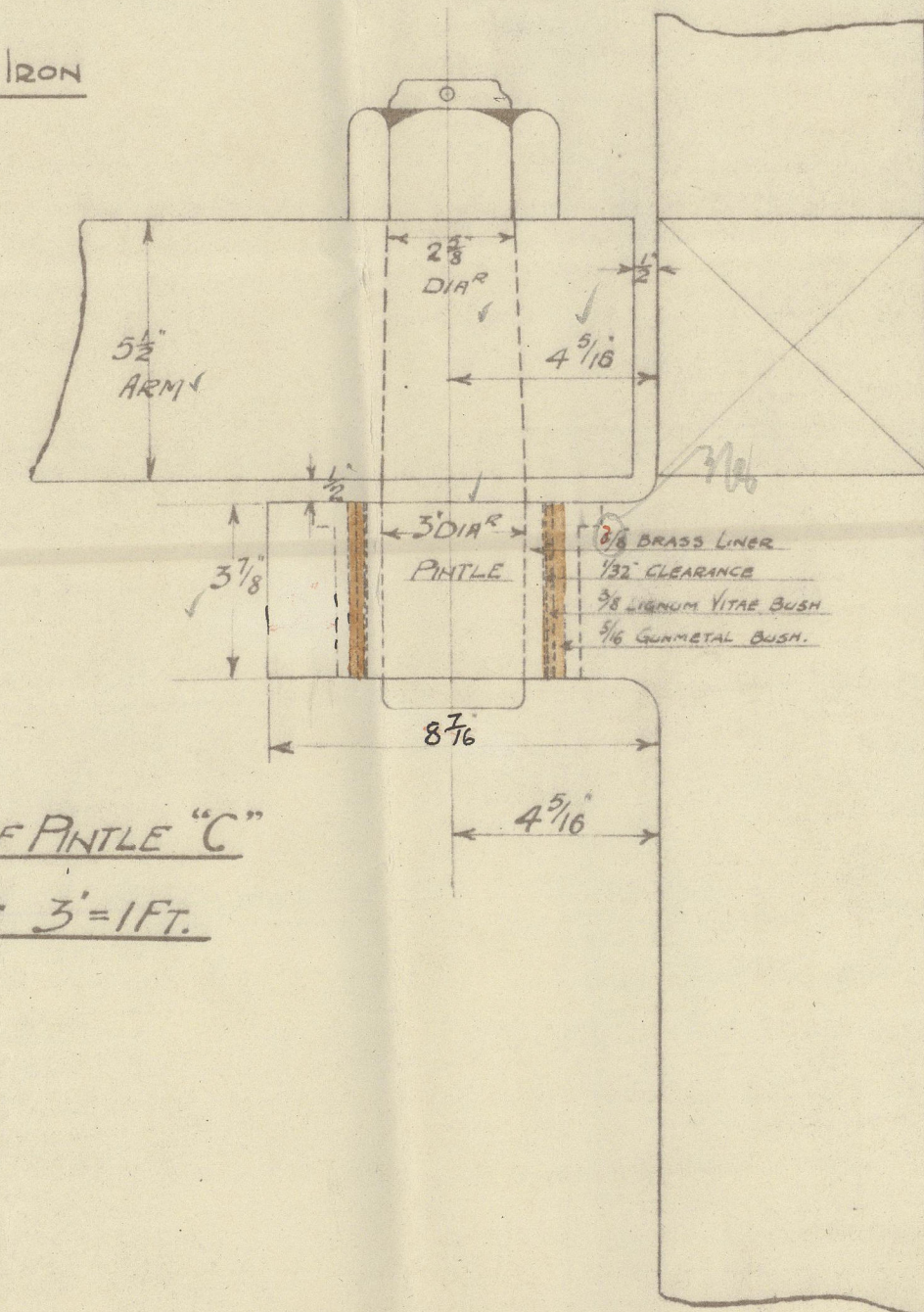
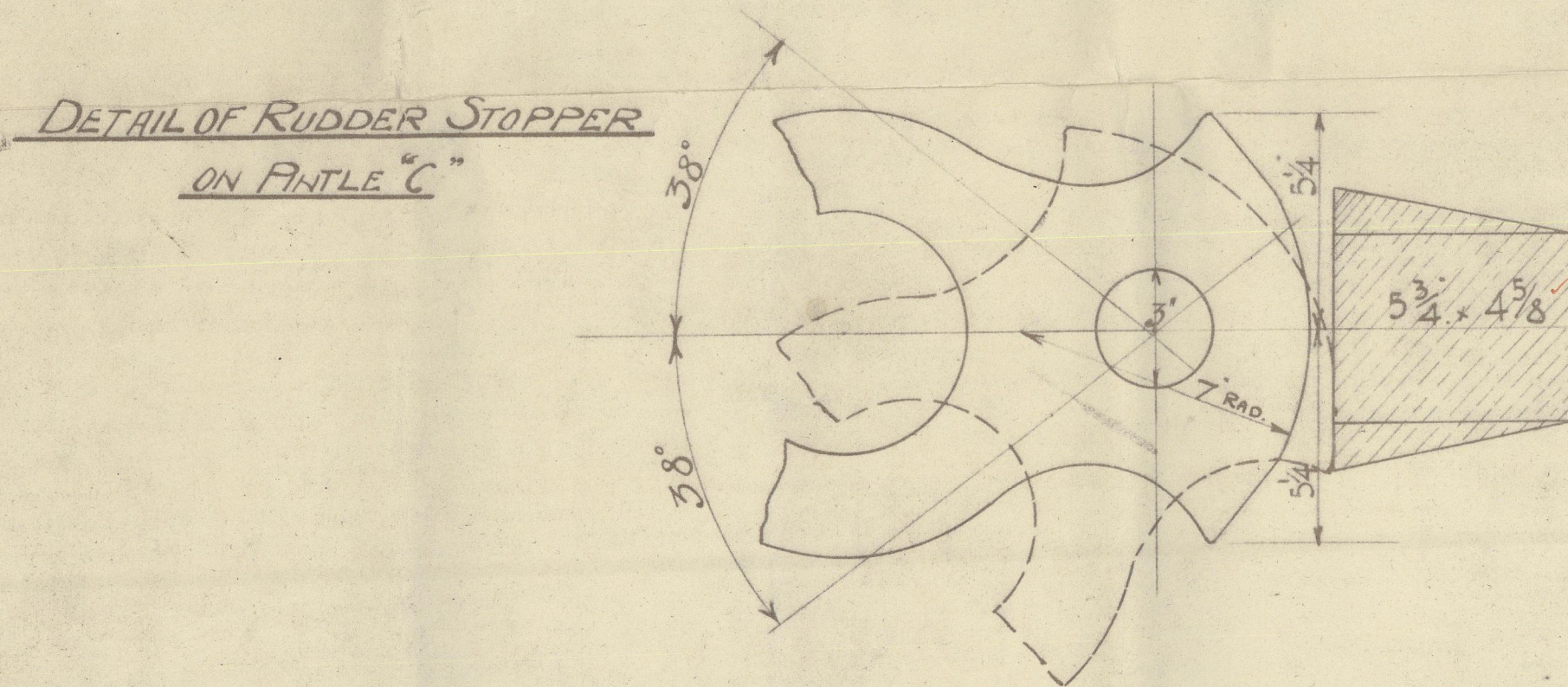


AREA of RUDDER "A" = 46.6  
CR of GRAVITY ABAFT  $\frac{1}{2}$  of PINTLES: "D" = 2.27  
A x D = 106  
SPEED 10 $\frac{3}{4}$

STERNFRAME AND RUDDER TO BE OF BEST FORGED IRON

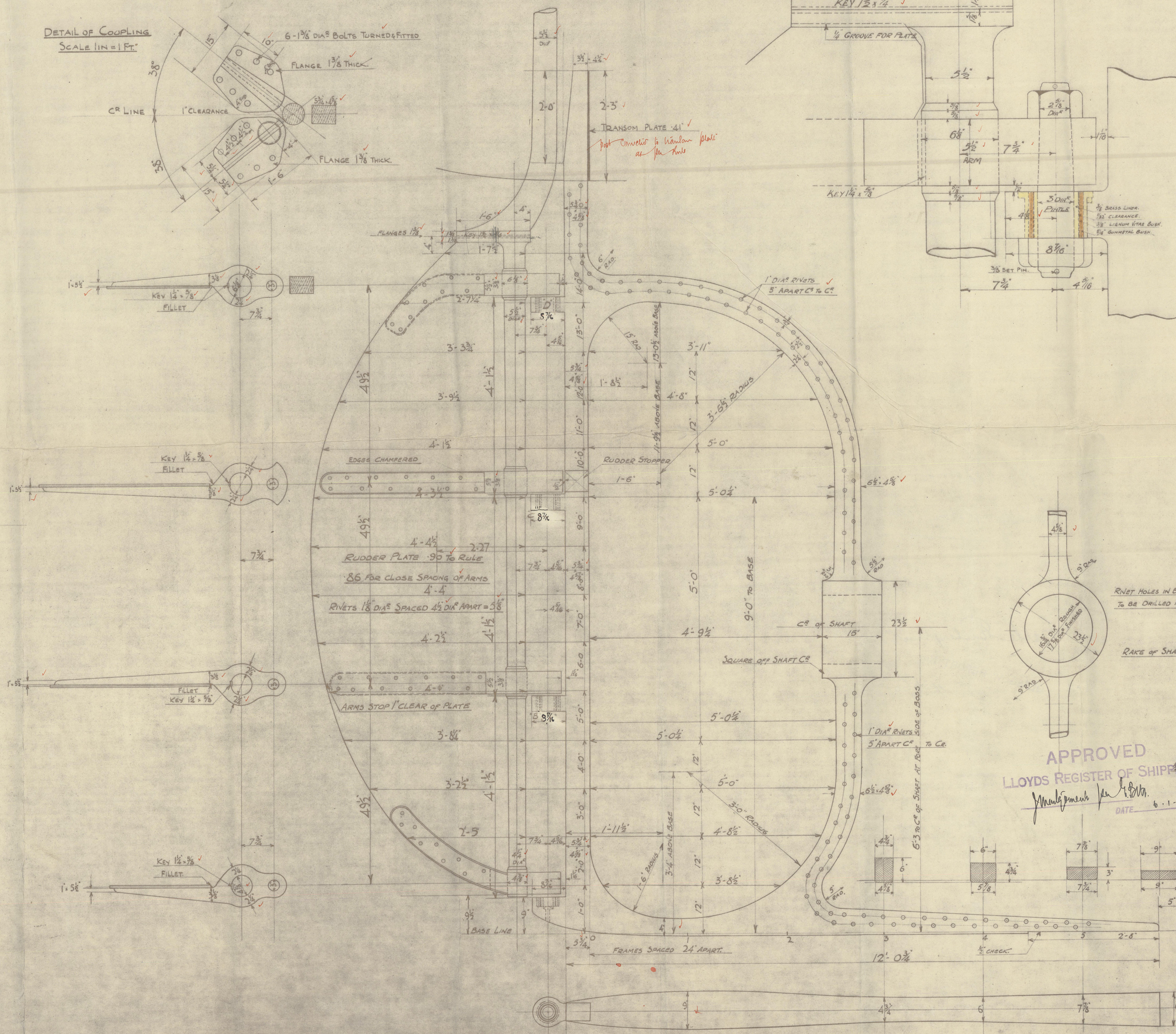
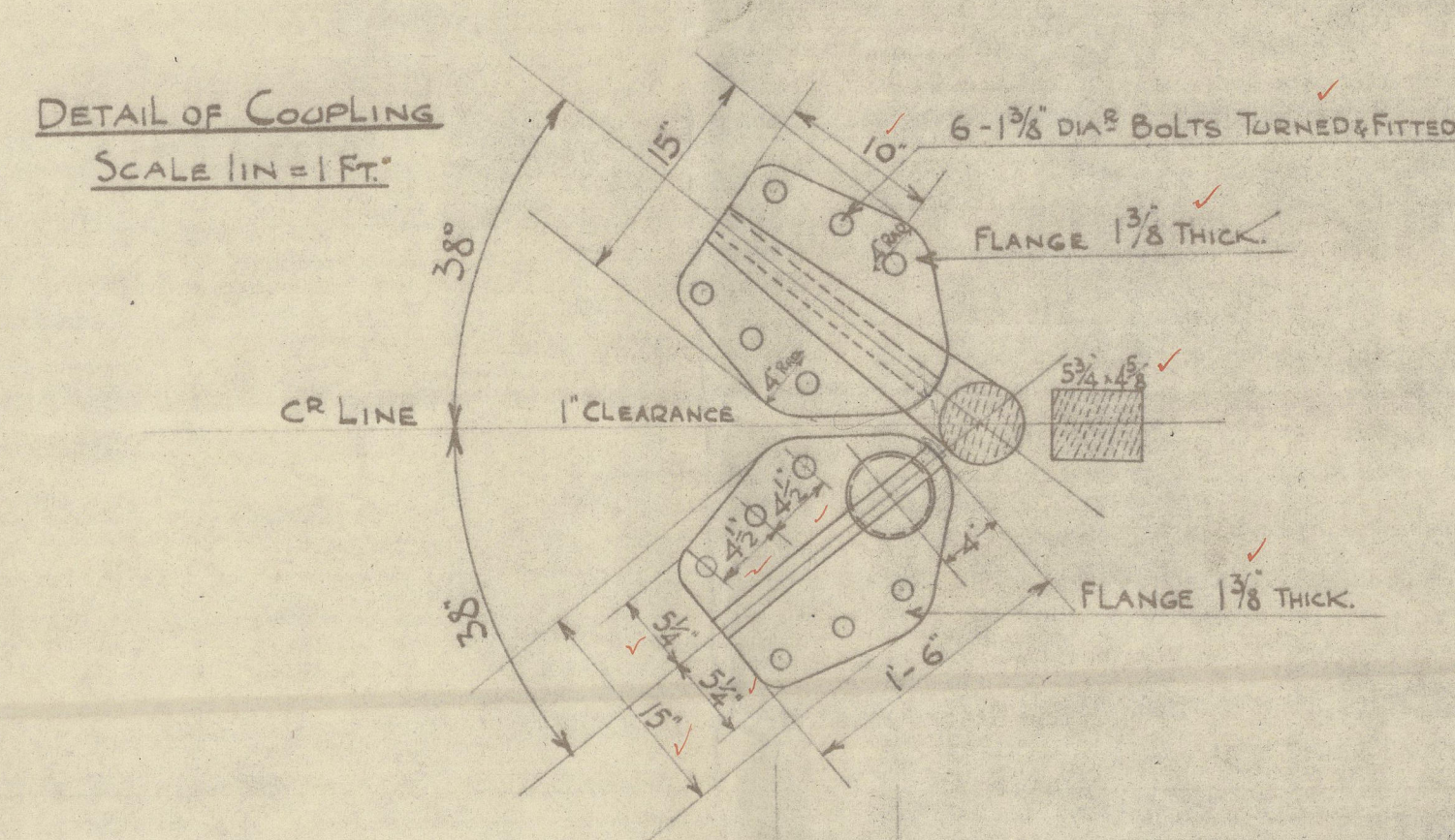
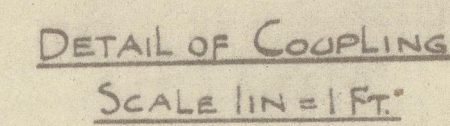


DETAIL OF PINTLE "C"  
SCALE 3' = 1 FT.

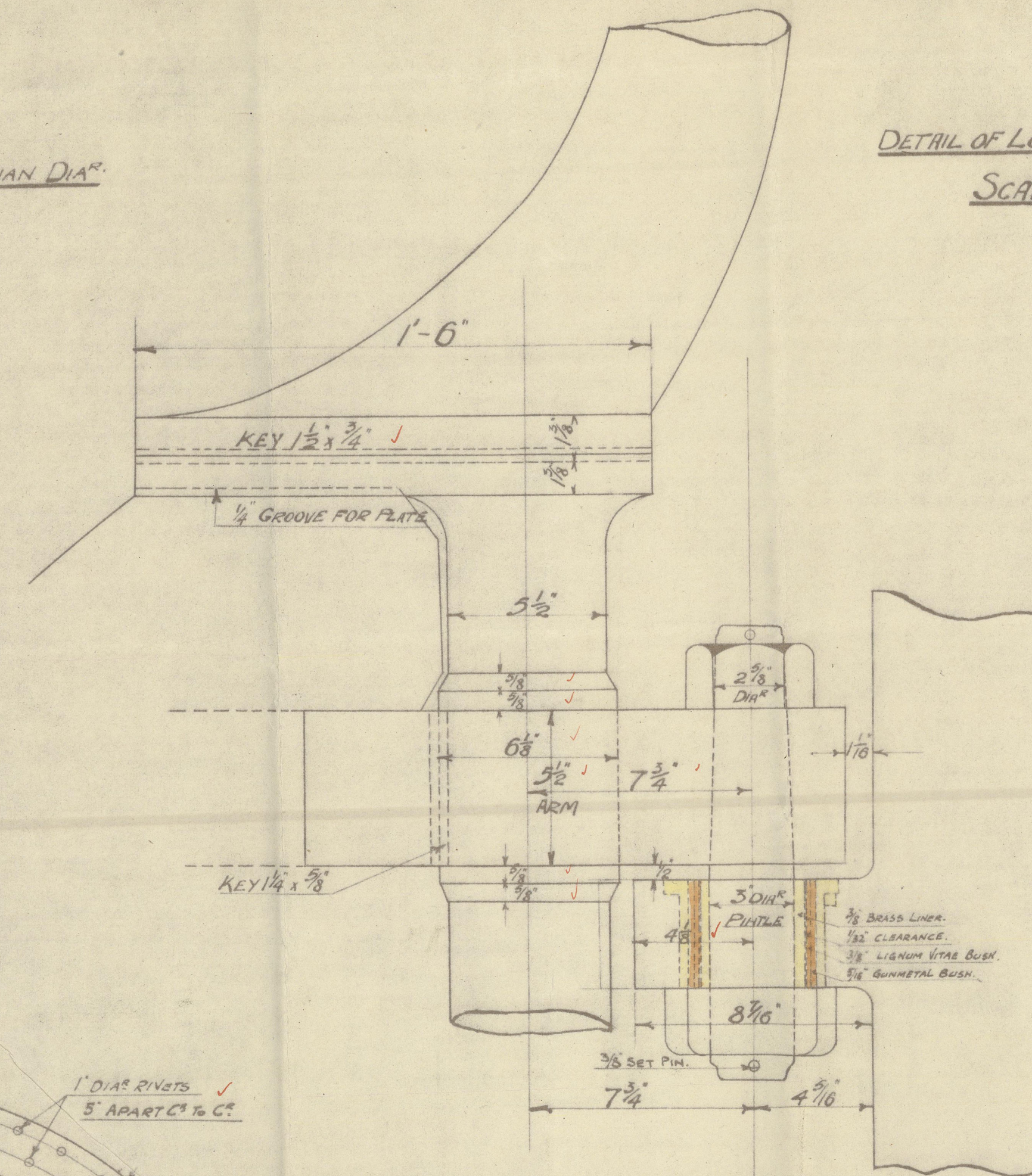


DETAIL OF RUDDER STOPPER  
ON PIVOT "C"

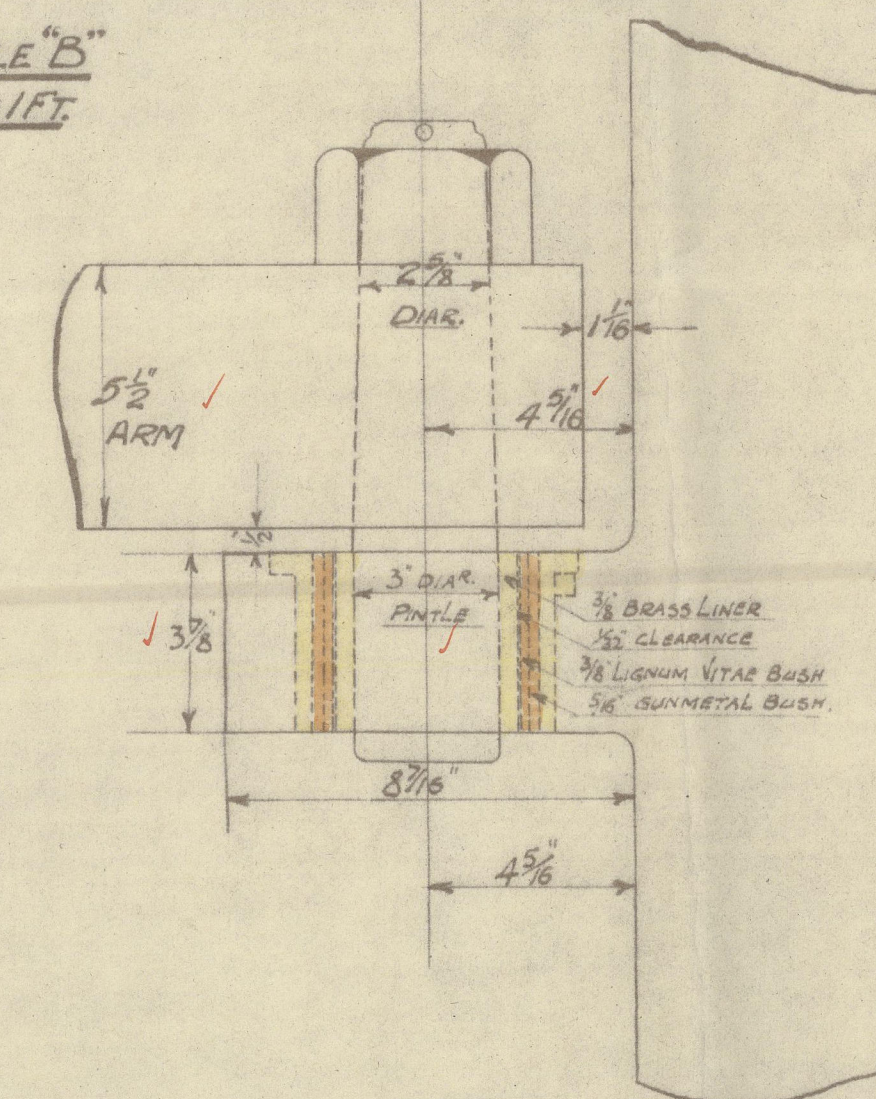
RIVET HOLES TO BE BORED  $\frac{1}{16}$  LARGER THAN DIA.  
OF RIVET.



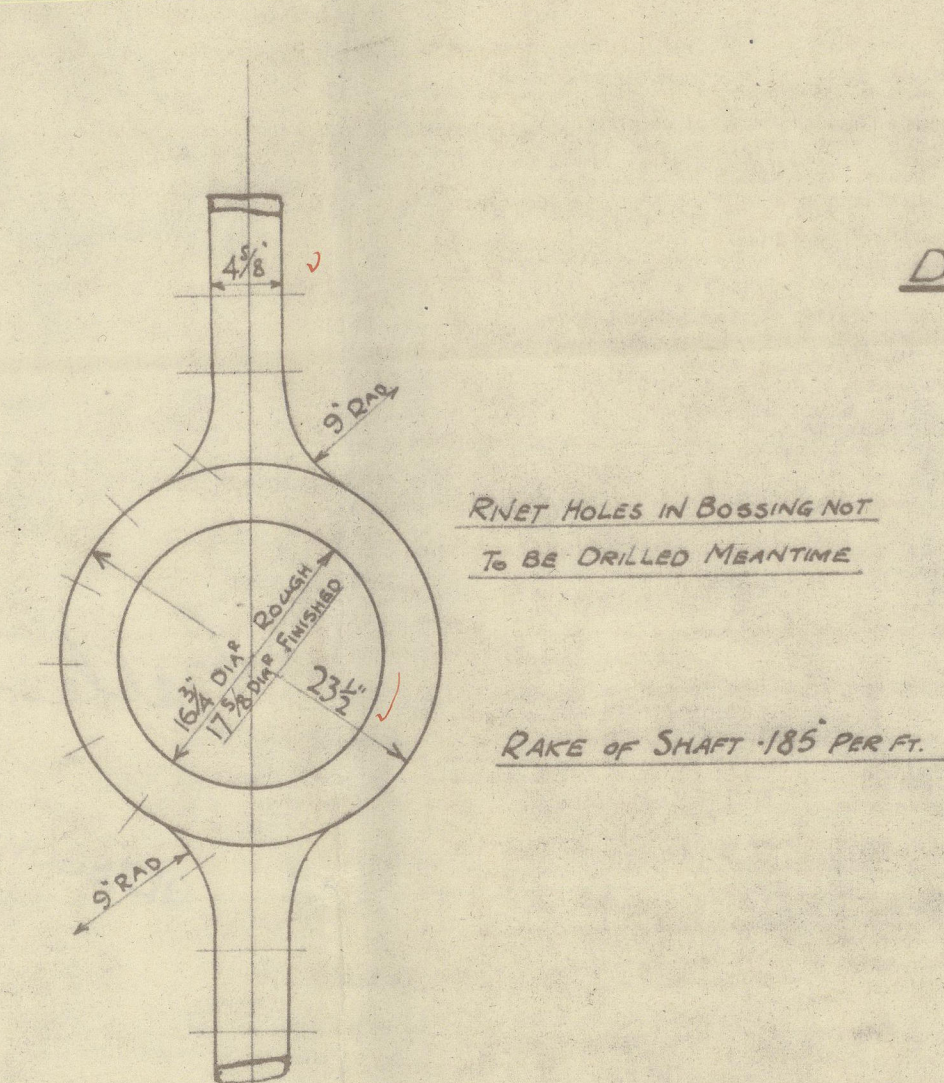
DETAIL OF LOCKING PINTLE "D"  
SCALE 3"=1 Ft.



DETAILS OF RINTLE "B"  
SCALE 3" = 1 FT.



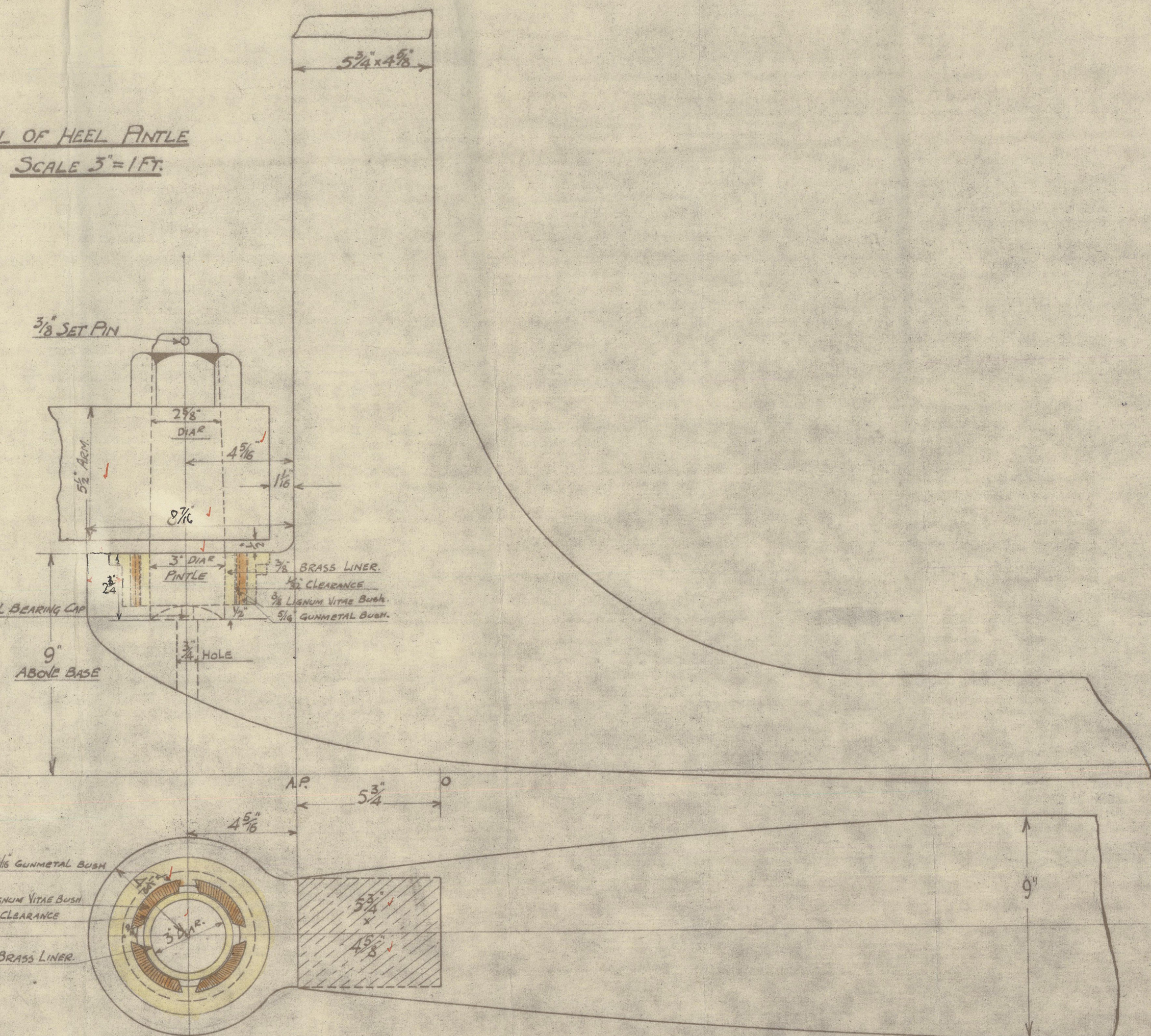
DETAIL OF HEEL PANTLE  
SCALE 3" = 1 FT.



RNET HOLES IN BOSSING NOT  
TO BE DRILLED MEANTIME

RAKE OF SHAFT .185 PER FT.

APPROVED  
LLOYDS REGISTER OF SHIPPING





No. 648 P.

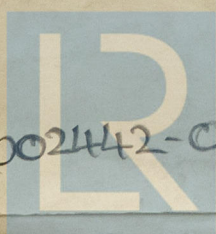
Rudder & Stem Frame

---

"Cable Enterprise"

GLASGOW REPORT No.

43660



© 2021

0021142-0021148-0135

Lloyd's Register  
Foundation