

17-10-12  
LONDON

not used  
44538  
initial of material  
"applied"

07758 - ON REPORT NO. 8410

**BRIDGE DECK**

BEAMS	5" x 3" x 3/4" on ALT. FRAMES
STRINGER BAR	3" x 3" x 28"
" PLATE	31" x 26"
TIE	7" x 28"
SIDE PLATING	28"
WOOD DECK	5" x 2 1/4" PITCH PINE

**FORECASTLE DECK**

BEAMS	5 1/2" x 3" x 3/4" on ALT. FRAMES
STRINGER BAR	3" x 3" x 28"
" PLATE	16" x 28"
PLATED AT G <sup>2</sup>	IN WAY OF WINDLASS
SIDE PLATING	28"
WOOD DECK	5" x 3" PITCH PINE

**MIDSHIP SECTION**  
**S. S. N° 244.**

**DIMENSIONS 180'0" x 28'0" x 13'4" MOULDED**

**SCALE 1/2" = ONE FOOT.**

**TO CLASS 100A.1.**

**EQUIPMENT NUMBER 8264-7**

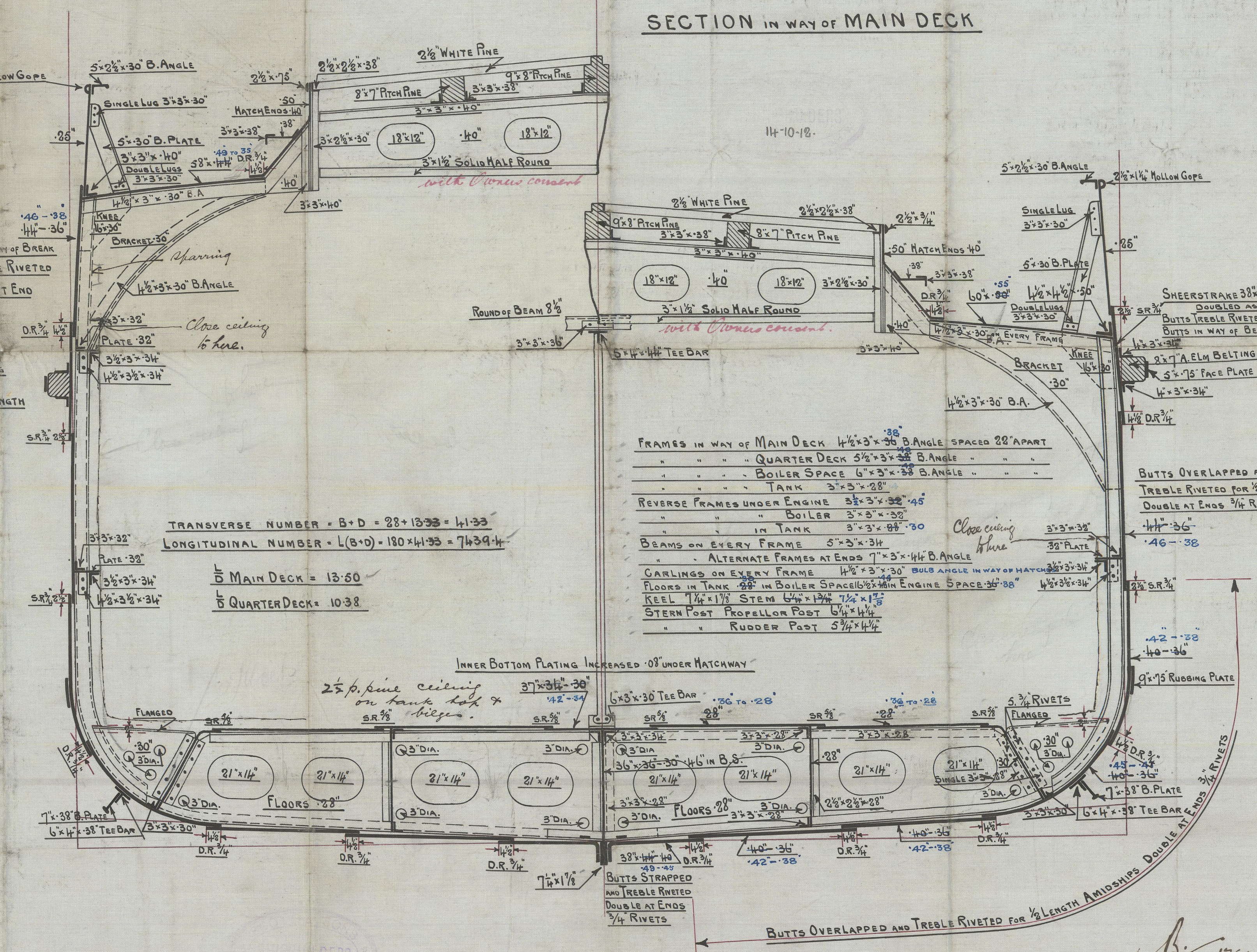
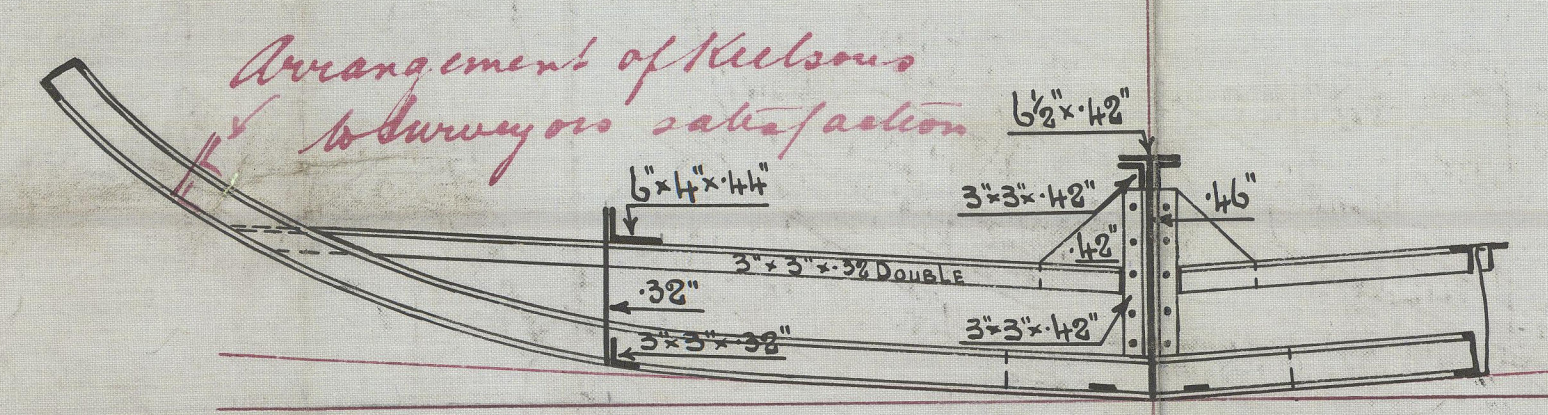
2 BOWER ANCHORS	16 3/4 CWT. STOCKLESS
1 " "	14 1/2 " "
1 STREAM ANCHOR	4 3/4 " EX STOCK
1 KEDGE ANCHOR	2 1/4 " "
210 FATHOMS	1 1/4 STUO CHAIN CABLE
60 "	3" STEEL WIRE
75 "	8 1/2" HEMP OR 2 3/4" STEEL WIRE
90 "	6" HAWSER
90 "	4" WARP

**SECTION IN WAY OF QUARTER DECK**

**SECTION IN WAY OF MAIN DECK**

**SECTION IN WAY OF BOILER SPACE.**

FRAMES 6" x 3" x 38" B. ANGLE SPACED 22" APART  
REVERSE FRAMES 3" x 3" x 32" DOUBLE ANGLES  
FLOORS 1 1/2" x 4" PARALLEL TO RISE OF FLOOR LINE



FRAMES IN WAY OF MAIN DECK 4 1/2" x 3" x 38" B. ANGLE SPACED 22" APART  
" " " QUARTER DECK 5 1/2" x 3" x 38" B. ANGLE " " "  
" " " BOILER SPACE 6" x 3" x 38" B. ANGLE " " "  
" " " TANK 3" x 3" x 28" " " "  
REVERSE FRAMES UNDER ENGINE 3 1/2" x 3" x 32" 45"  
" " " BOILER 3" x 3" x 32" 30"  
" " " IN TANK 3" x 3" x 28" 30"  
BEAMS ON EVERY FRAME 5" x 3" x 3/4" B. ANGLE  
" " " ALTERNATE FRAMES AT ENDS 7" x 3" x 1 1/4" B. ANGLE  
CARLINGS ON EVERY FRAME 4 1/2" x 3" x 30" BOLD ANGLE IN WAY OF MATCHES 30" x 30"  
FLOORS IN TANK 1 1/2" x 4" IN BOILER SPACE 1 1/2" x 4" IN ENGINE SPACE 30" x 38"  
KEEL 1 1/2" x 1 1/2" STEM 6 1/4" x 1 1/2" 7 1/2" x 1 1/2"  
STERN POST PROPELLOR POST 6 1/4" x 1 1/2"  
" " RUDDER POST 5 1/4" x 1 1/2"

- BUTTS OF CENTRE GIRDER OVERLAPPED AND DOUBLE RIVETED 3/4" RIVETS
- " MARGIN PLATE STRAPPED AND DOUBLE RIVETED 5/8" RIVETS
- " MIDDLE LINE STRAKE OVERLAPPED AND DOUBLE RIVETED 5/8" RIVETS
- " INNER BOTTOM PLATING OVERLAPPED AND DOUBLE RIVETED 5/8" RIVETS
- " DECK STRINGER OVERLAPPED AND TREBLE RIVETED DOUBLE AT ENDS 3/4" RIVETS
- " DECK PLATING " " DOUBLE " SINGLE AT ENDS

C.B.  
17.10.12.



Scott Ross  
No 244

Midships Section

"Clandeboye"

SAT MAY 24 1913

GLASGOW REPORT No. 32770

BRIDGE DECK

BEAMS 2 1/2" x 3" on ALT. FRAMES

PLATE 5 1/2" x 8"

TIE 1" x 8"

SIDE PLATING 1" x 8"

WOOD DECK 2" x 8" PITCH PLANK

FORCASTLE DECK

BEAMS 2 1/2" x 3" on ALT. FRAMES

STRINGER BAR 3" x 3" x 8"

PLATE 16" x 8"

PLATED AT 1/2" IN WAY OF WINDLASS

SIDE PLATING 1" x 8"

WOOD DECK 2" x 3" PITCH PLANK

SECTION

SECTION

SECTION

SECTION

SECTION

SECTION

SECTION

SECTION

SECTION

SECTION

SECTION

SECTION

SECTION

SECTION

SECTION

SECTION

SECTION

SECTION

SECTION

SECTION

© 2020

Lloyd's Register  
Foundation

002449-002456-0034