

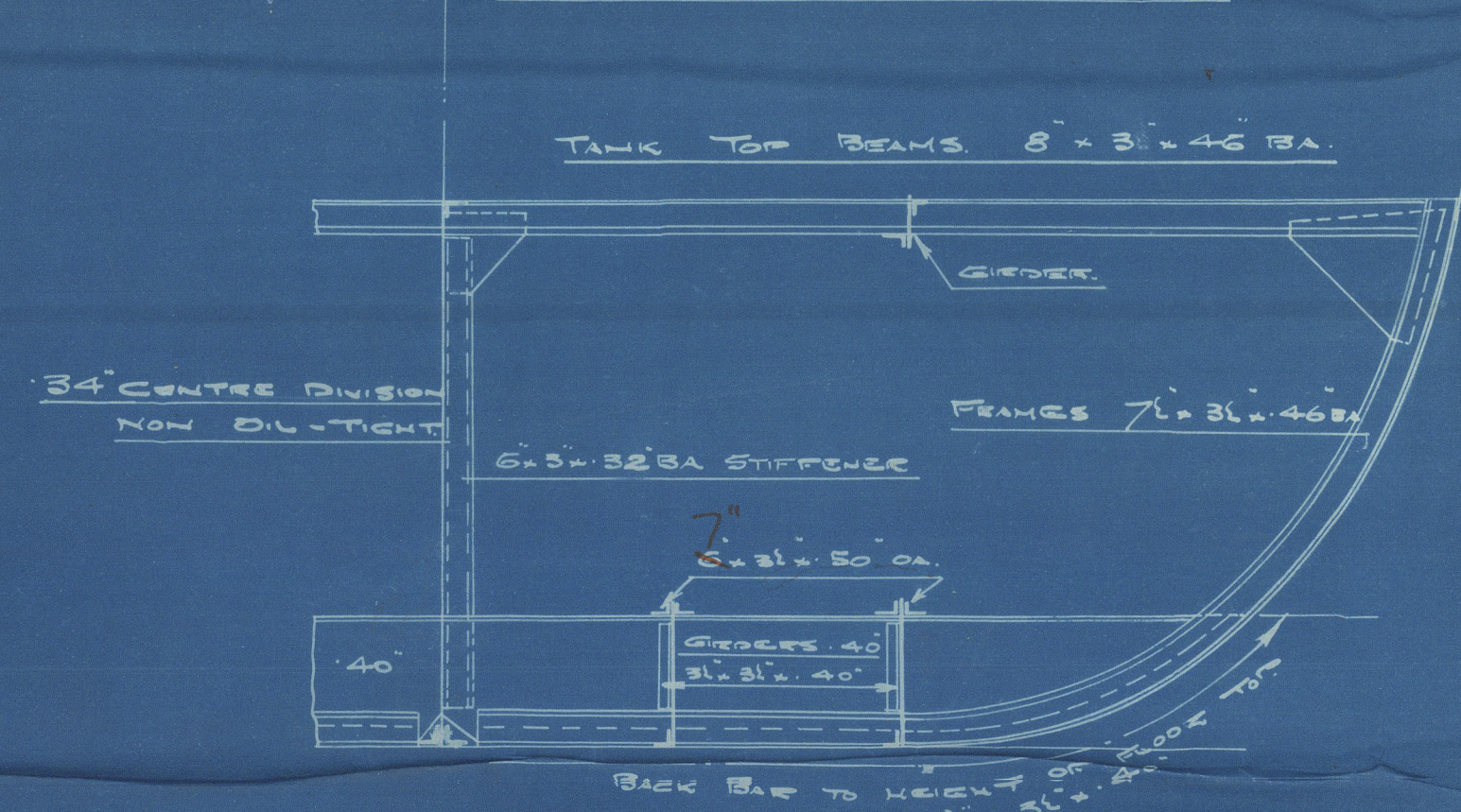
SECTIONS IN CARGO HOLD & FORE PEAK.

DIMENSIONS: - LENGTH BP 440'-0". BREADTH MW 56'-9". DEPTH MW 30'-9". (TO UPPER D¹)

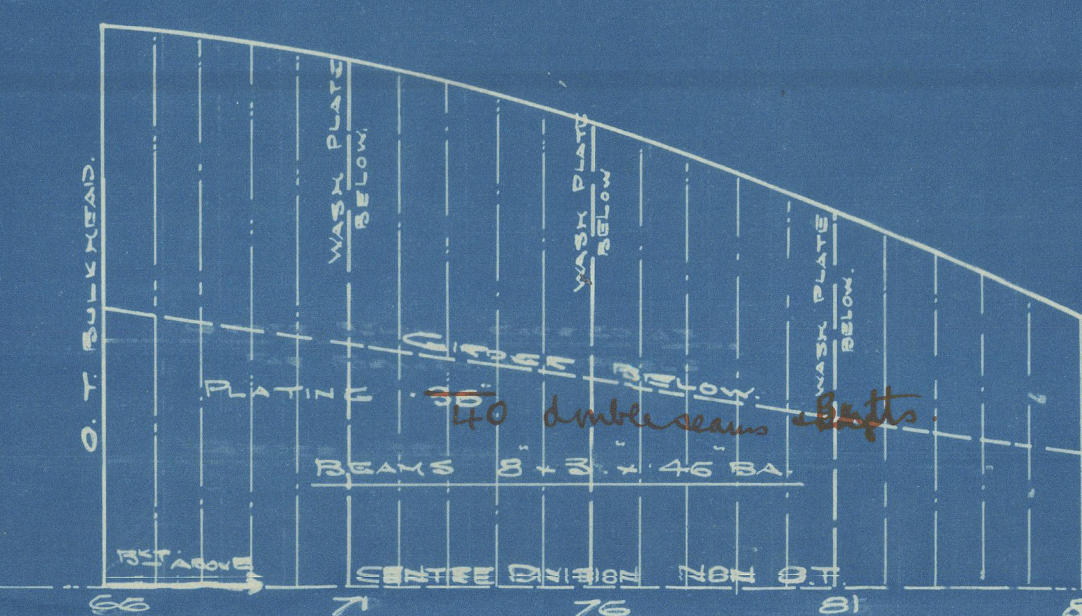
SHERWOOD SYSTEM (PATENT)

SCALE: 1/4" INCH = 1 FOOT

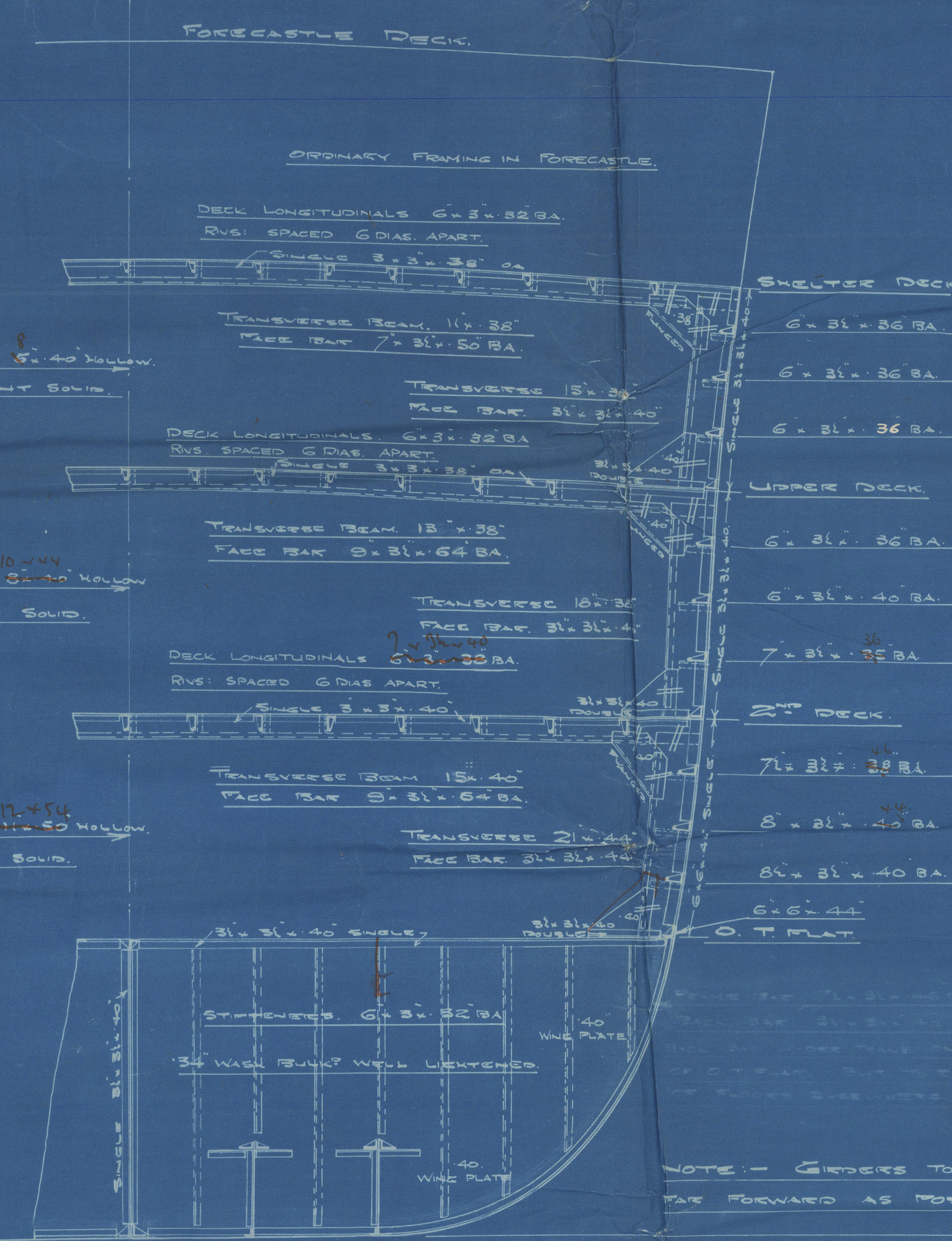
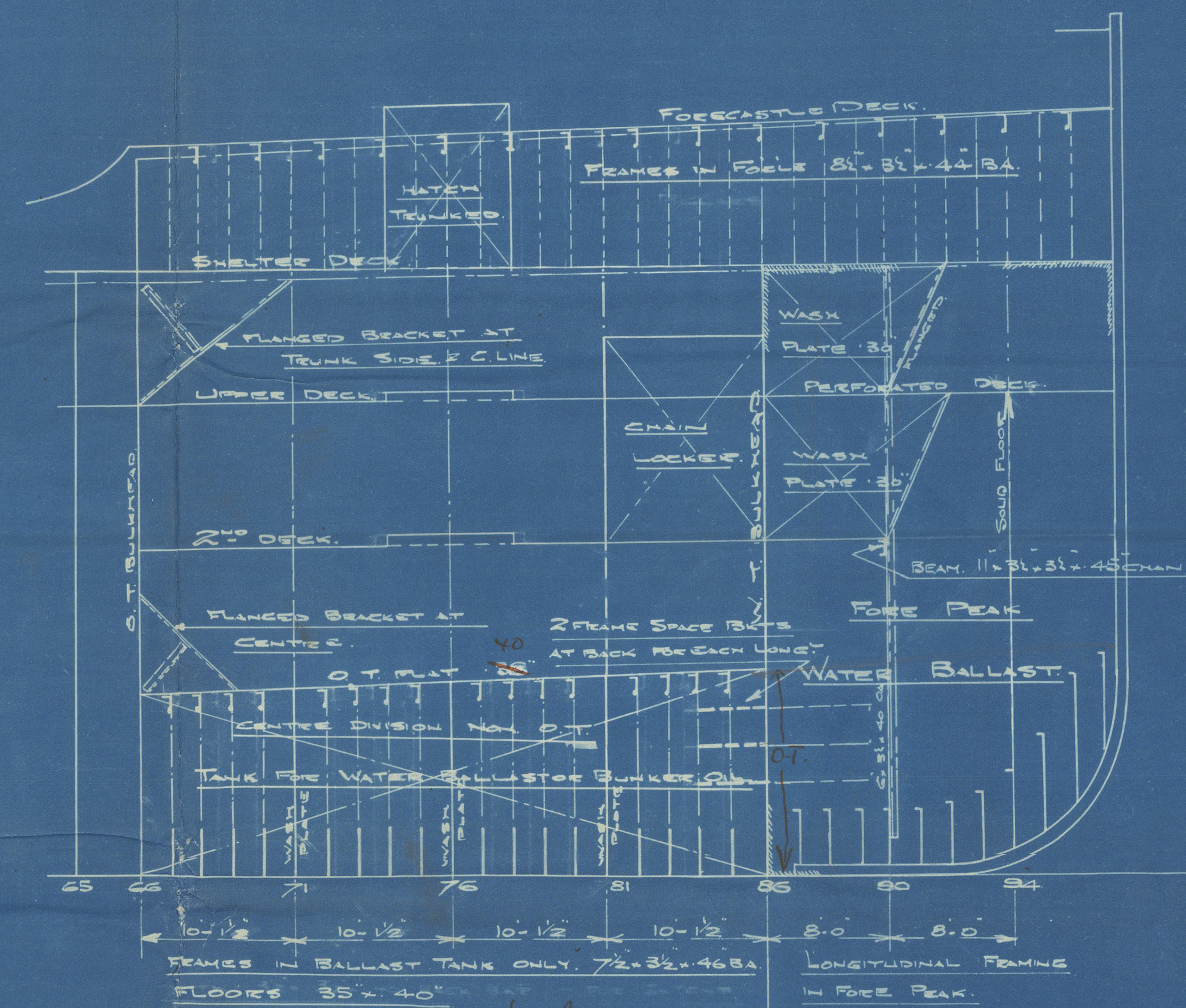
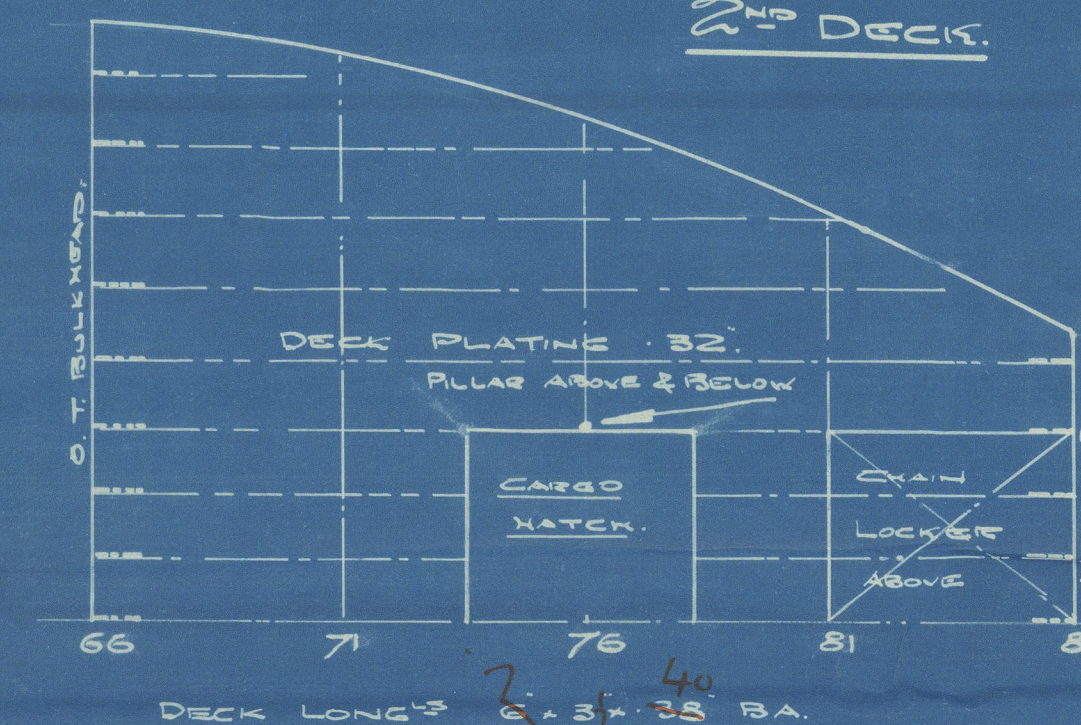
SECTION THRU WATER BALLAST
OR OIL TANK THRU
CLEAR OF WASH PLATE



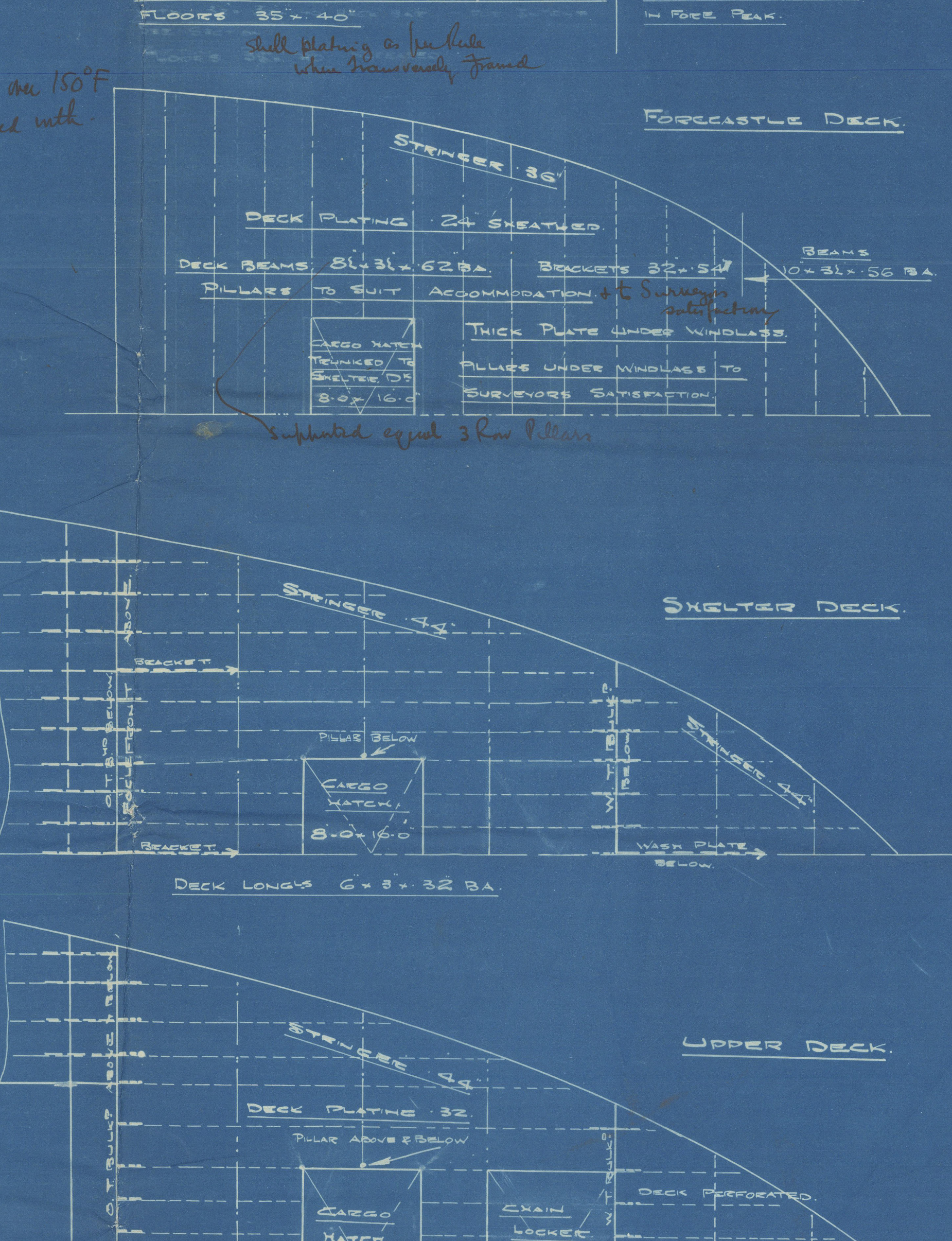
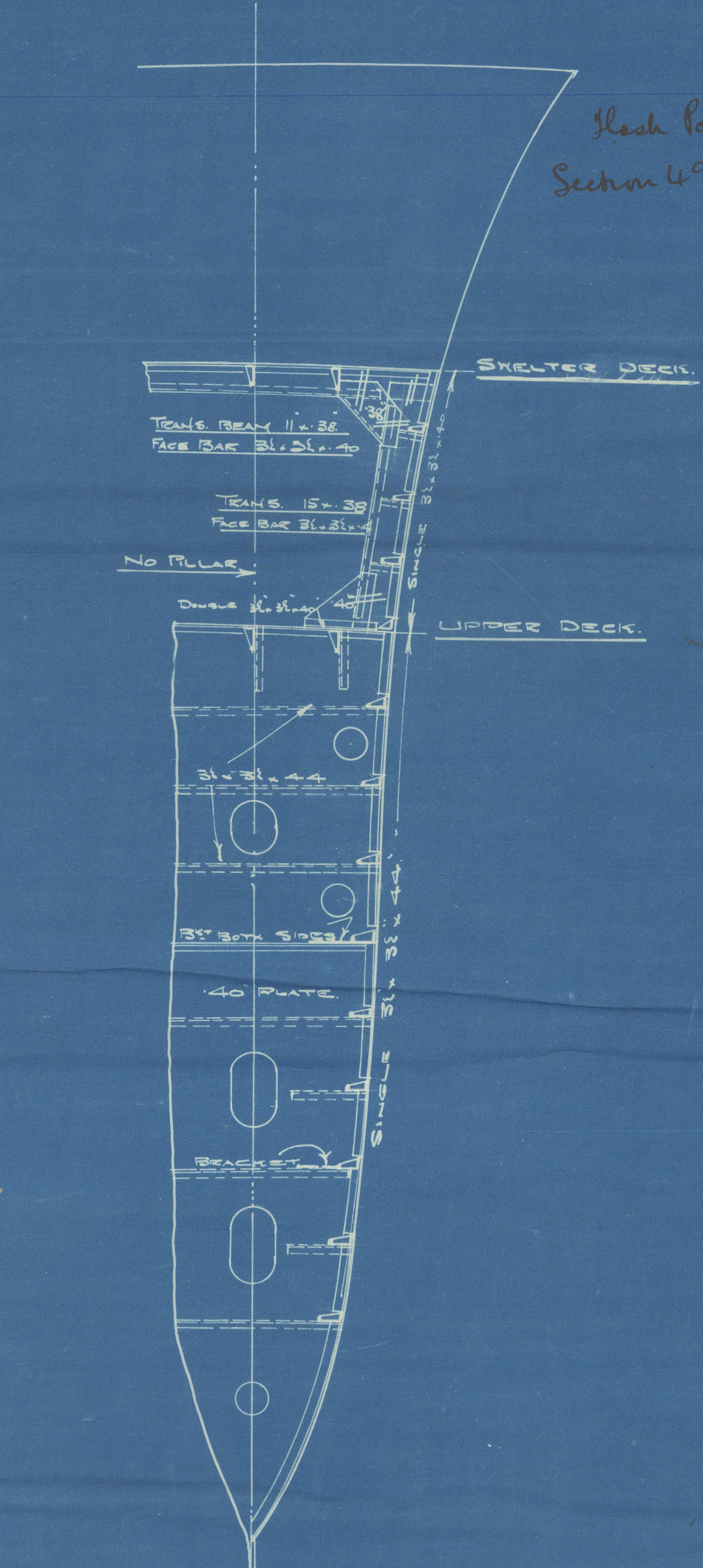
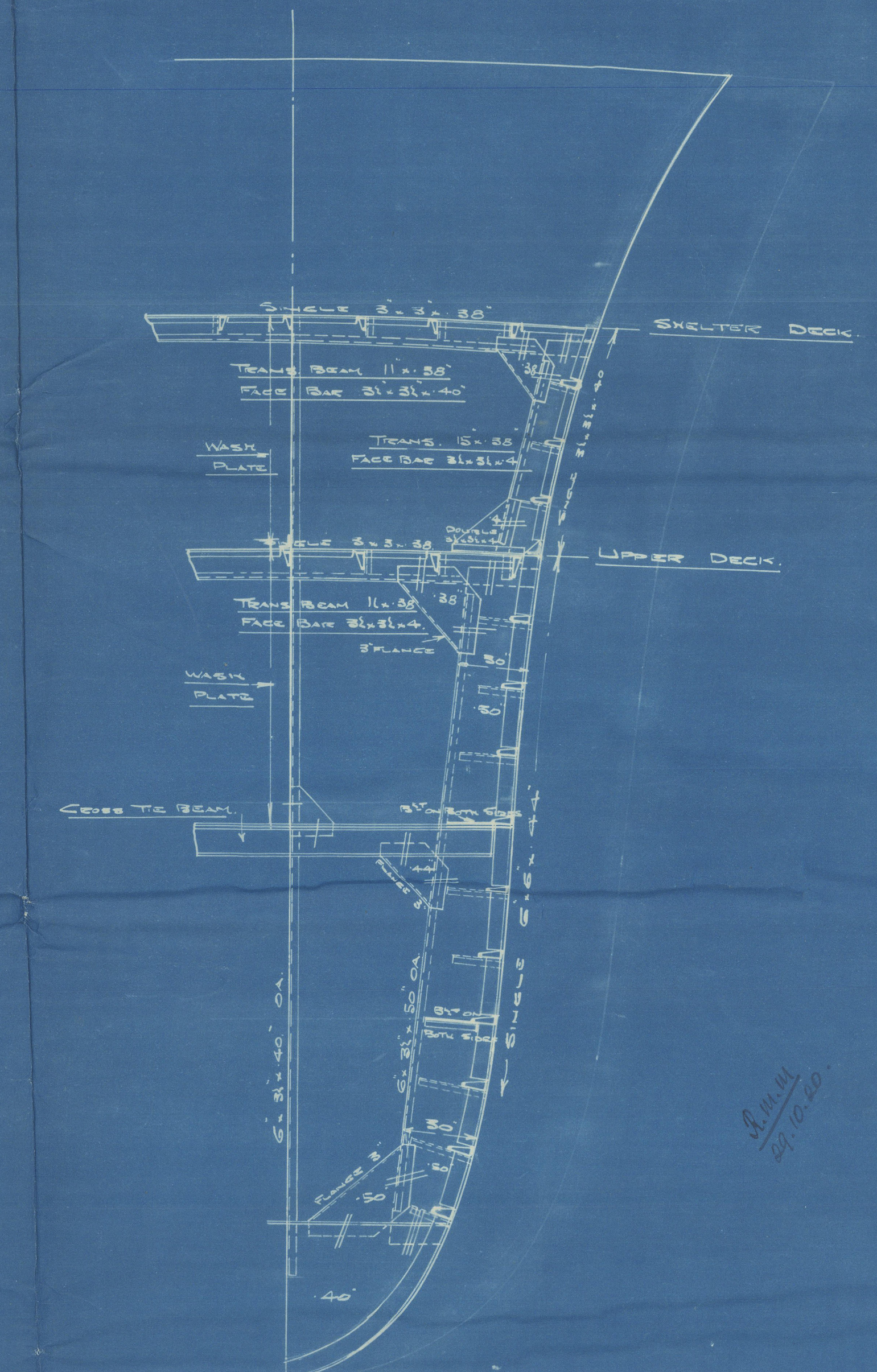
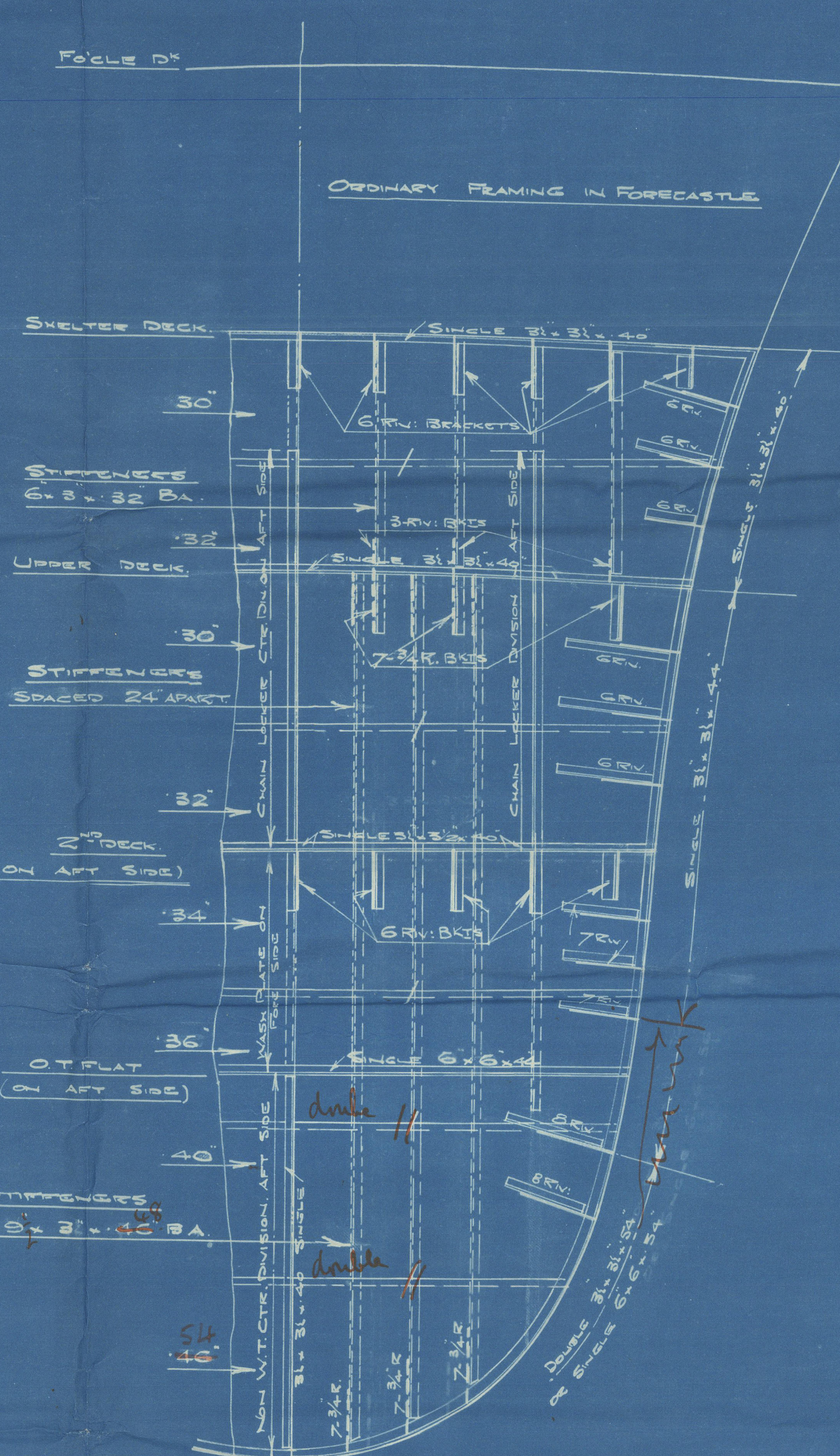
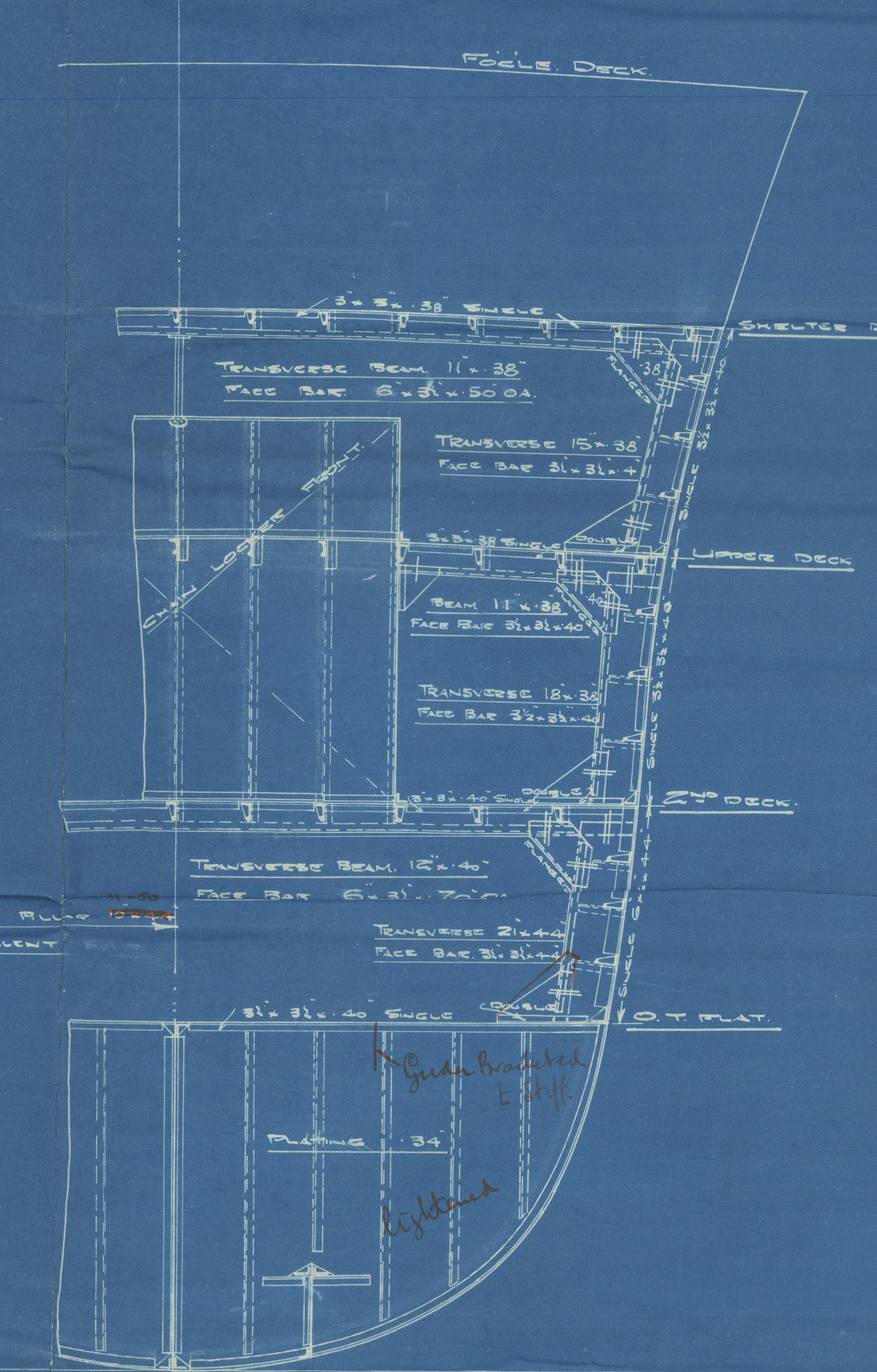
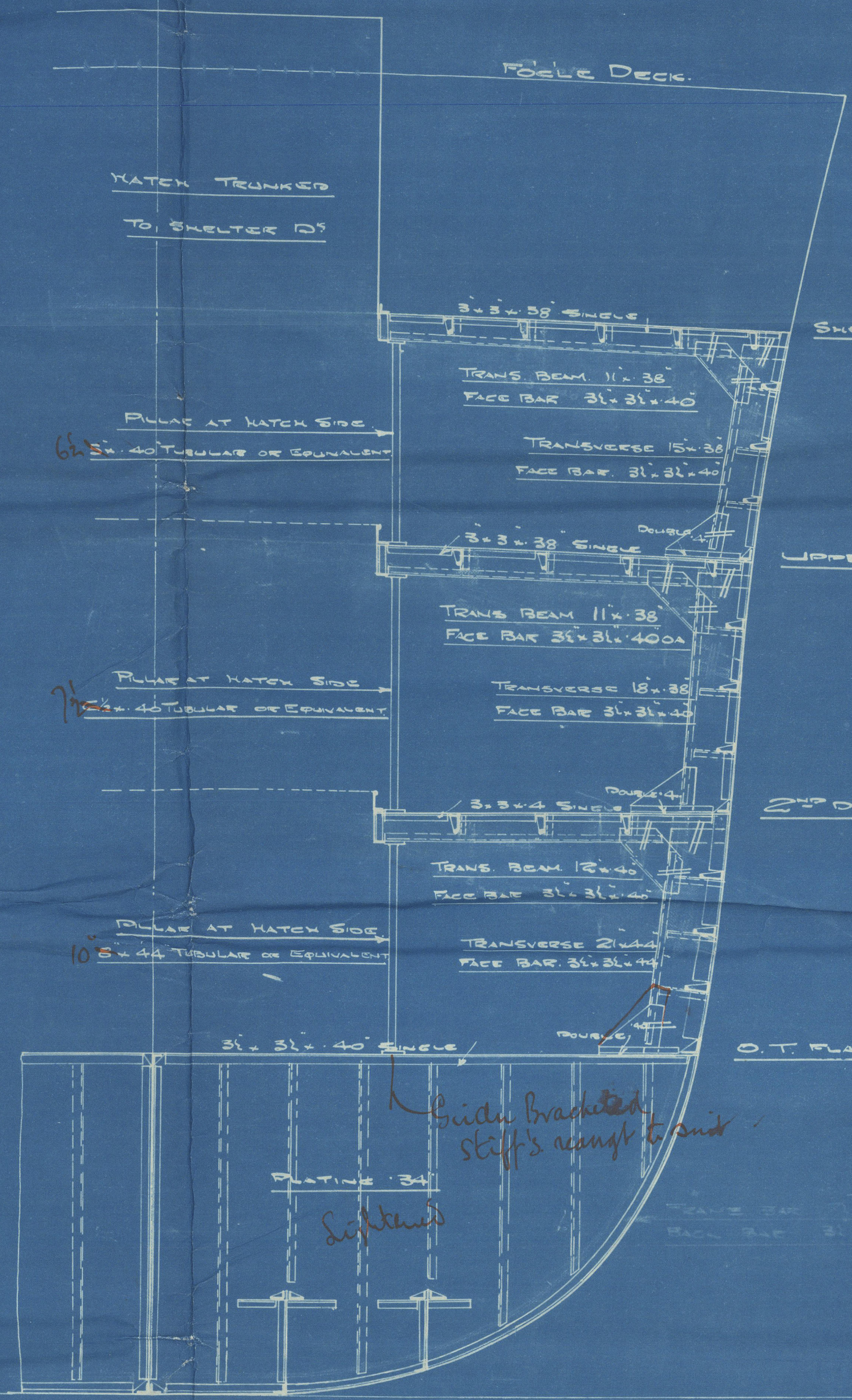
O.T. PLAT



2ND DECK



NOTE - THE POSITION OF SHELL LONGITUDINALS IS APPROXIMATE



TRANSVERSE 74
LOOKING FORWARD.

TRANSVERSE 76
LOOKING FORWARD.

TRANSVERSE 81
LOOKING FORWARD.

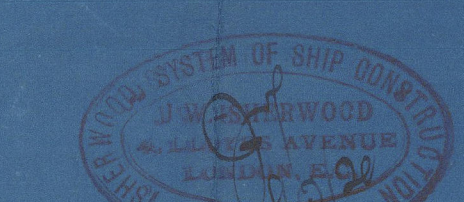
TRANSVERSE 86
LOOKING FORWARD.

TRANSVERSE 80
LOOKING FORWARD.

TRANSVERSE 94
LOOKING FORWARD.

TRANSVERSE 94
LOOKING FORWARD.

SECTIONS IN CARGO HOLD & FORE PEAK.
MESS^{RS} HANTRON LEE & CO. LTD.
- HEBBURN ON TYNE -
SHIP NO 528.
SHERWOOD NO 1380. PLAN NO 297



Lo Cozas

(3)

528

Sections in Cargo Hold

²
Fore Reack

See ^{also} fore peak bh plan
S. S. Badarpur

15/10/11.



© 2020

Lloyd's Register
Foundation

002485-002489-0086