

16 FEB 1946

Index No. 37871A
(For London Office only).

Lloyd's Register of Shipping.

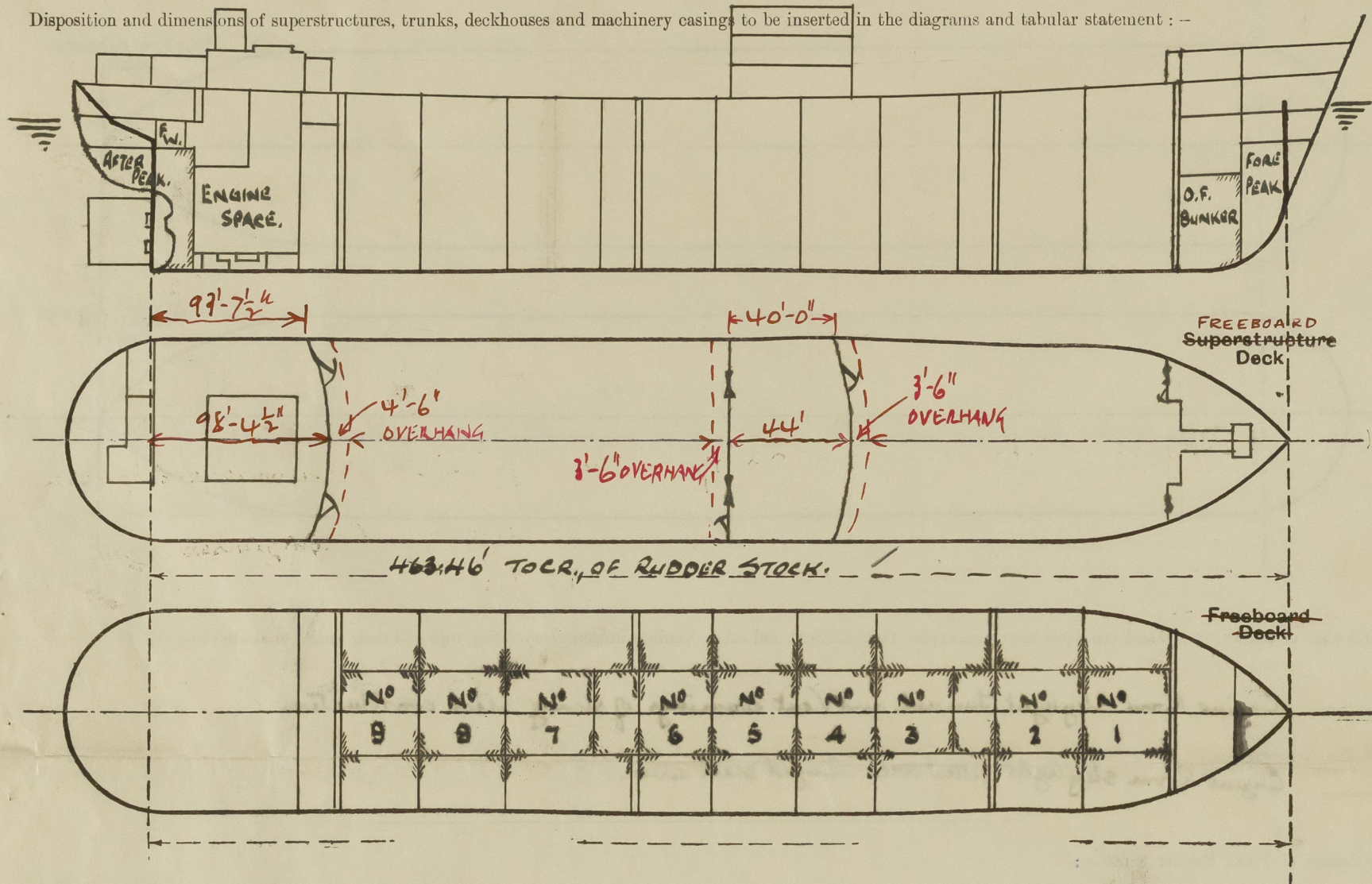
SURVEYS FOR FREEBOARD.

(CONDITIONS OF ASSIGNMENT.)

N^o 34406

Ship's Name "BRITISH MAJOR" (DOXFORDS 734) Port of Survey SUNDERLAND.
 Official Number 180838. Surveyor's Signature Neil F.H. Duncan
 Nationality and Port of Registry BRITISH; LONDON. Date of Survey DURING CONSTRUCTION.

Disposition and dimensions of superstructures, trunks, deckhouses and machinery casings to be inserted in the diagrams and tabular statement:—



Particulars of Superstructures, Trunks, Casings, Deckhouses.

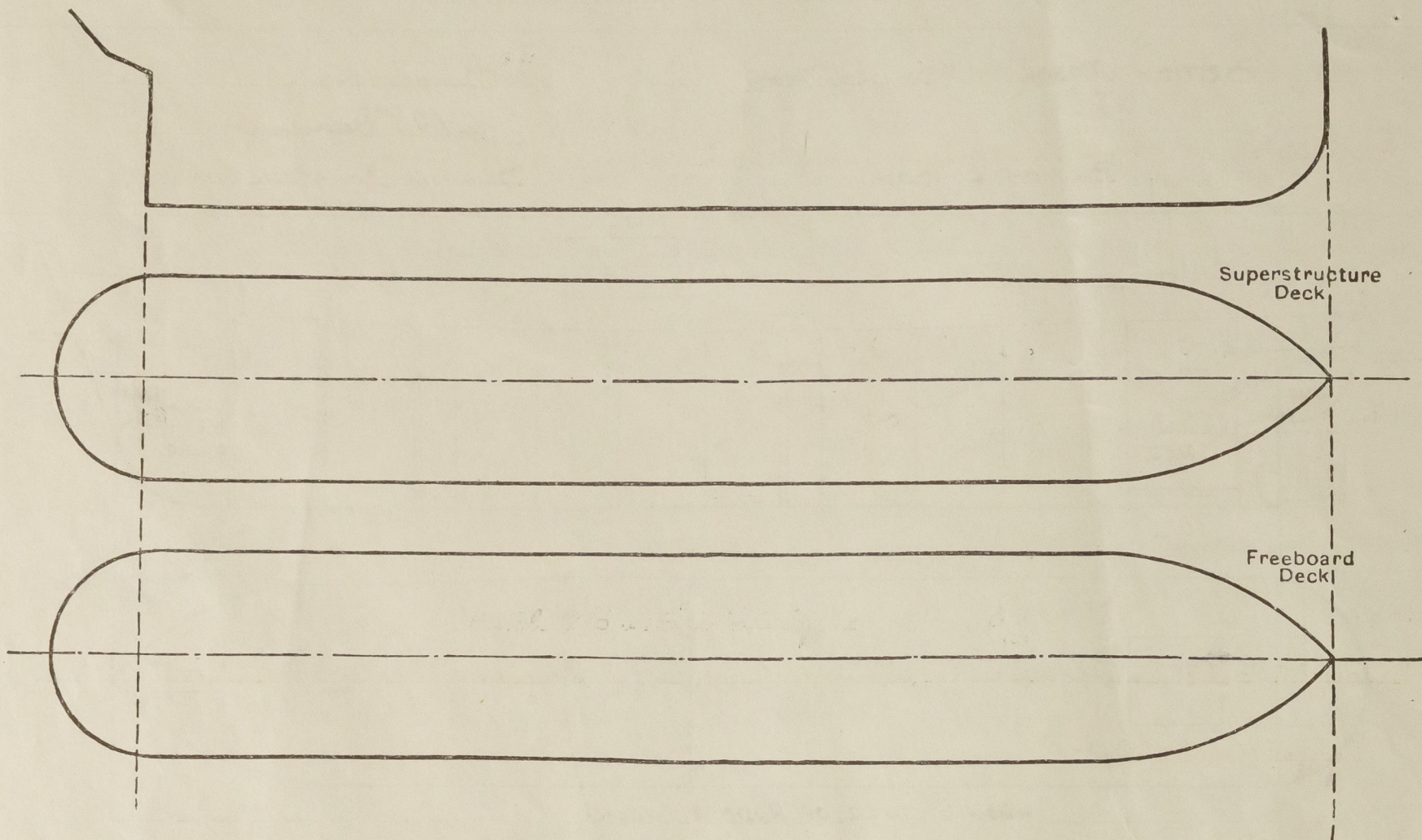
	Coaming	Plating	Stiffeners	Spacing	End Attachments of Stiffeners	Size of Openings	Height of Sills	Height of Casings
Poop Bulkhead44	.44	10x3 1/2 x 40 L	30"	Long T & B.	5'-0" x 3'-0"	18"	8'-0"
Raised Quarter Deck Bulkhead ...								
Bridge, After Bulkhead30	.30	4x3 x 32 L	30"	✓	2'-0" x 3'-1"	18"	8'-0"
Bridge, Forward Bulkhead44	.44	10x3 1/2 x 40 L	30"	Long T & B.	6'-0" x 3'-0"	18"	8'-0"
Forecastle Bulkhead31	.31	3 1/2 x 3 1/2 x 38 L	24" and 27"	✓	3'-1" x 4'-1"	19"	8'-0"
Trunk, Aft	✓							
Trunk, Forward	✓							
Exposed Machinery Casings on Freeboard or Raised Quarter Decks ...	✓							
Exposed Machinery Casings on Superstructure Decks	✓							
Machinery Casings within Superstructures not fitted with Class I Closing Appliances	✓							
Deckhouses on Flush Deck Ships ...	✓							

Particulars of Closing Appliances (state if capable of being manipulated from both sides).

Poop Bulkhead	Two Mechans W.T. Doors.
Raised Quarter Deck Bulkhead ...	
Bridge, After Bulkhead	Shifting boards in channels & Mechans W.T. Doors.
Bridge, Forward Bulkhead	
Forecastle Bulkhead	Shifting boards in channels!
Exposed Machinery Casings on Freeboard or Raised Quarter Decks ...	
Exposed Machinery Casings on Superstructure Decks	
Machinery Casings within Superstructures not fitted with Class I Closing Appliances	
Deckhouses on Flush Deck Ships ...	

PARTICULARS OF PROTECTION TO OPENINGS, ETC.

The following diagrams should be used to indicate the positions of cargo and coaling hatchways, gangway, cargo and coaling ports, ventilators, companionways, etc., which would affect the seaworthiness of the ship:—



Particulars of fiddle, funnel and ventilator coamings, engine room skylight and other openings in machinery casing tops and their means of closing:—

Engine Room skylight, funnel and Vent coamings of strong steel construction.
Engine Room skylight fitted with hinged steel cover.

Particulars of Flush Bunker Scuttles:—

None.

Particulars of Companionways:—

Freeboard Deck:—

Pump Room entrance Ford. Plating 30". Stiffens 4"x3"x30". Deck opening 6'-0"x5'-0". Skylight 6'-0"x4'-6" with steel cover.
Pump Room entrance Aft. Plating 30". Stiffens 4"x3"x30". Deck opening 6'-0"x5'-0".
W.T. Door fitted in Ford Aft Pump Room 4'-3"x2'-3" Coaming 18"x30". Stiffens spaced 30" abt T & B.

Particulars of Ventilators in exposed positions on freeboard and superstructure decks:—

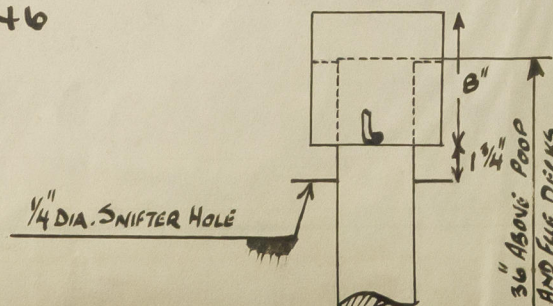
- 1 - 8" Diam Wind Vent, Coaming 36"x30" to Fore Peak stime. Fore Dk.
- 3 - 8" " " " " 36"x30" to Fore Turbine alks. Fore Dk.
- 2 - 12" " " " " 36"x34" to Turbine alks Ford. Fore Dk.
- 1 - 12" " " " " 36"x34" to Ford Pump Rm. Fore Dk.
- 2 - 12" " " " " 36"x34" to Ford hold. Fore Dk.
- 1 - 6" " " " " 30"x30" to Staring gear. Poop Dk.
- 2 - 6" " " " " 30"x30" to Stime Rm. Poop Dk.
- 1 - 9" " " " " 30"x32" to Refrig Machy. Poop Dk.

All Vent Vents closed by means of wood plugs and canvas covers.

Particulars of Air Pipes in exposed positions on freeboard, raised quarter, or superstructure decks:—

All Air Pipes of a patent type and in accordance with approved plan Automatic Vent Pipes for

All Fuel and Water Ballast Tanks. 3-1-4-6



Particulars of Gangway Cargo and Coaling Ports:—

None.

Particulars of Scuppers and Sanitary Discharge Pipes:—

Discharges on or above freeboard deck led to N.R. valves in turbine decks.

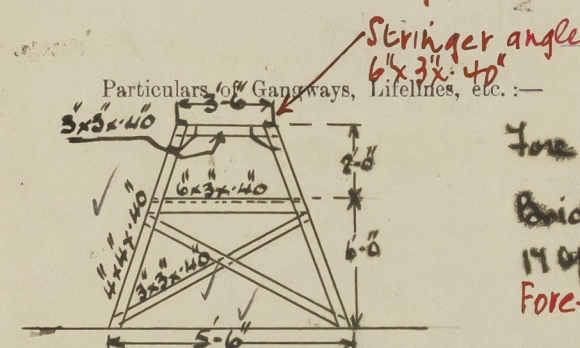
Particulars of Side Scuttles:—

Sidelights to accommodation in Poop turbine decks aft, 42-12" diam., fitted with substantial hinged deadlights.

Vertical distance of Sill of lowest Side Scuttle above top of keel 41'-0"

Particulars of Guard Rails:—

Open rails fore and aft 3'-6" in height. Steel bulwarks amidships 1' freeing port Port & Star, 12'-0"x9" in Ford part and 15'-0"x9" in after part.



Fore and aft gangway 8'-0" high from Poop to Bridge house end and from Bridge house to Fore. 1/2" chequer plate plating fore and aft, bracing 13 Ford and 17 aft spaced 8'-4 1/2" apart. Rails 3'-6" in height, stanchions spaced 4'-6" apart. Fore-and-aft bracing, 2 fore and 2 aft.

Particulars of Freeing Arrangements.

	Length of Bulwark	Height of Bulwark	Size of Freeing Ports	Number each side	Area each side	Rule area each side
After Well						
Forward Well						

State position of each freeing port (After Well:—

(F. and A. position and height above deck edge) (Forward Well:—

State whether the freeing ports are fitted with shutters, bars, or rails, and give particulars of such:—

Additional area where sheer is less than standard.

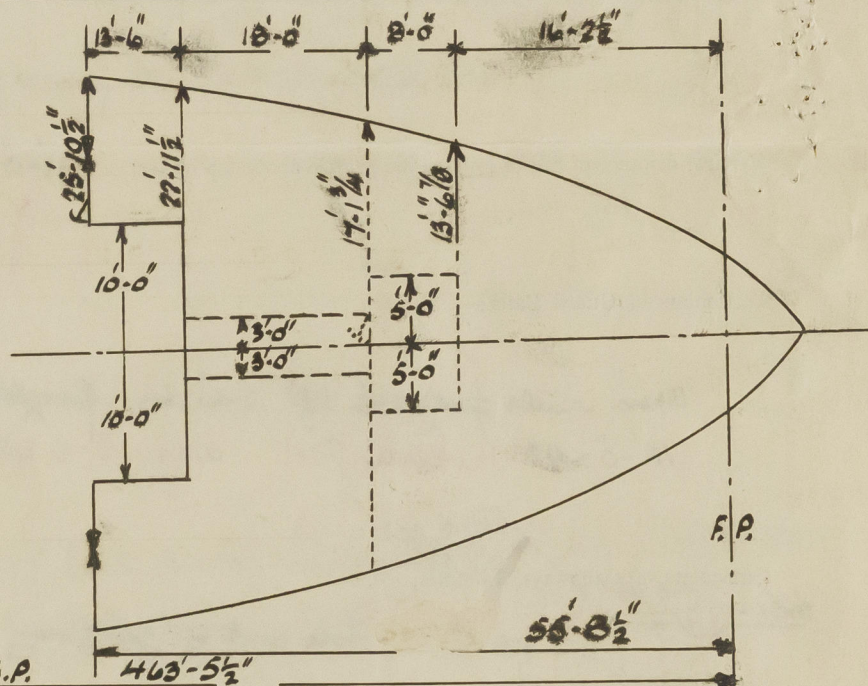
British Major.

PARTICULARS OF PROTECTION TO OPENINGS, ETC.

HATCHWAYS ON FREEBOARD AND SUPERSTRUCTURE DECKS.									
Description of Hatchway									
Dimensions of Hatchway		<u>Foreboard Deck.</u>							
COAMINGS	Height above Deck								
	Thickness								
	Sides								
	Ends								
HATCH BEAMS	Stiffeners								
	Brackets, Stays								
	Number								
	Spacing								
FORE AND AFTERS	Scantling and Sketch	<p>30 Hatches to Long Tanks 6'-0" x 4'-0". Coaming 12" x 4" W.T. A.A. 50" O.T. Covers. 16 Toggles. ✓</p> <p>2 Hatches to After 10' off deck 2'-11" x 2'-11" Coaming 30" x 4" W.T. 50" O.T. Covers 7 Toggles. ✓</p> <p>2 Hatches to Forward 10' off deck 2'-11" x 2'-11" Coaming 30" x 4" W.T. 50" O.T. Covers 7 Toggles. ✓</p> <p>1 Hatch to Tank deck fore. 10'-0" x 6'-9" Coaming 30" x 4" W.T. 50" O.T. Covers 24 Toggles. ✓</p>							
	Bearing Surface	<u>Pop Deck.</u>							
	Number								
	Spacing								
HATCH COVERS	Unsupported Lengths	<p>1 Hatch to Reeling Space (2.2) 2'-4" x 2'-4" Coaming 30" x 4" W.T. 3" Wood cover. Cleats spaced 18" Bearing Surface 3". 2 TARPULINS. ✓</p> <p>1 Hatch to Steering Gear 2'-0" x 2'-0" Coaming 30" x 4" W.T. 50" W.T. Cover. ✓</p>							
	Scantling* and Sketch	<u>Forecastle Deck</u>							
	Material								
	Thickness								
HATCH COVERS	How fitted								
	Bearing Surface	<p>1 Hatch 2'-0" x 18" to Reeling Space Coaming 12" x 4" W.T. 50 W.T. Cover. ✓</p>							
	Spacing of Cleats								
	Number of Tarpaulins								

*Are wood fore and afters steel shod at all bearing surfaces?
 Are battens and wedges efficient and in good condition?
 Are tarpaulins in good condition and in accordance with rule requirements?
 Are lashings provided in accordance with rule requirements?

Particulars of any special features:—



Endorsement at first survey and at surveys for renewal of Certificate:—

The fittings and appliances are in accordance with the particulars shown on this form (or as now modified) and are in good condition.