

22 FEB 1946

Index No.

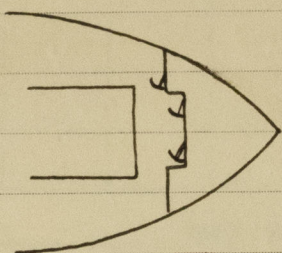
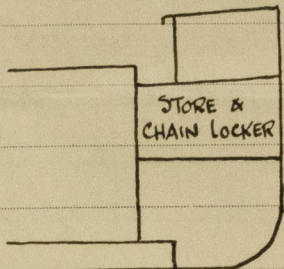
# Lloyd's Register of Shipping.

Ship's Name S.S. "ARDGRYFE"

Official No. 142318

Memorandum of alterations reported since ship was surveyed for assignment of Load Lines in

Alterations to arrangements at the fore end are now reported as follows.



Forecastle bulkhead closing appliances —

One hinged steel + one hinged wood door operated from both sides.

One hinged steel door not operated from both sides.

Crews' accommodation now contained in new houses erected on aft end of casing top.

Hold forward bulkhead moved aft two frame spaces, in line with fore end of No. 1 hatch.

R.A. Welch

Greenock. 7/2/46.

A.R.