

25/7/23.

1006
SHUTTER DECK.

STOPPERS ON DECK.

476
470
N^o 469 S.S.

FORGED STEEL RUDDER FRAME.

SCALE: $\frac{1}{2}$ " = 1 FOOT.

TAYLOR, HALLISTON, PATENT BEARINGS.

LENGTH OF VESSEL: 395' 3"

LOAD DRAUGHT 23' 0"

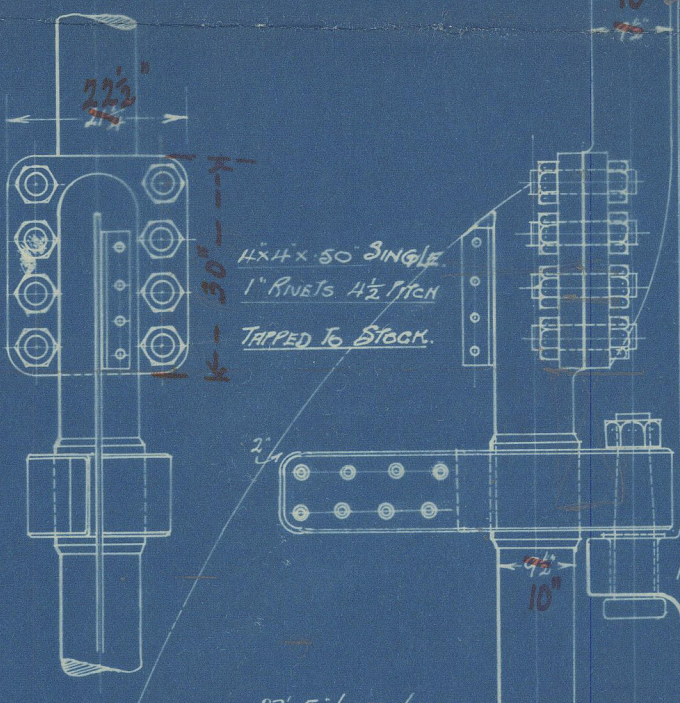
SPEED 9 1/2 KNOTS

AREA ABOVE FORE EDGE OF RUDDER STOCK 127 sq ft and taken up to under side of coupling

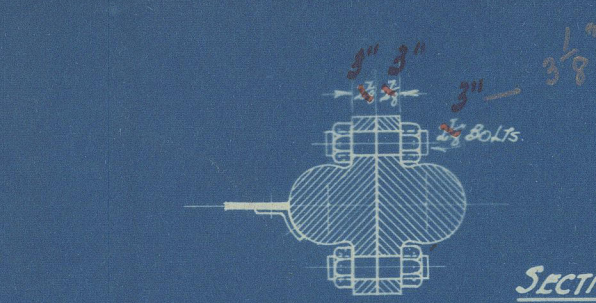
CENTRE OF GRAVITY FROM CENTRE LINE OF PINS 3' 5"

AX D = 127' x 3' 5" = 4444 under 505.

ELEVATION OF COUPLING
LOOKING FORD

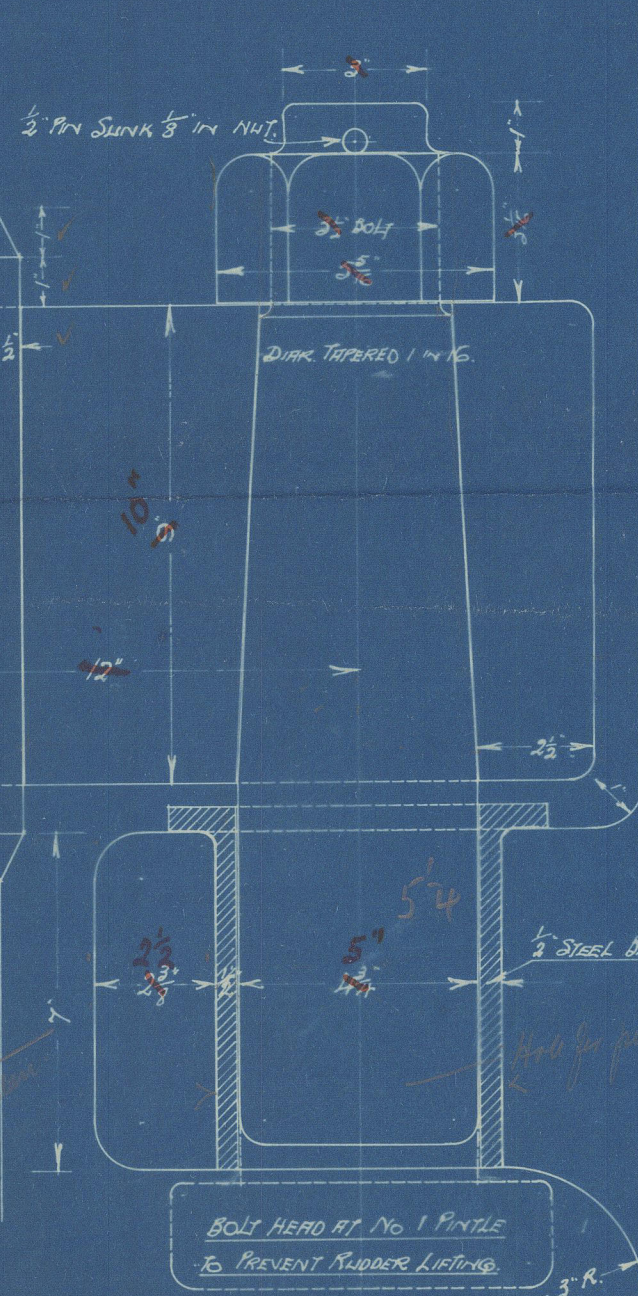


SECTION IN WAY OF COUPLING.

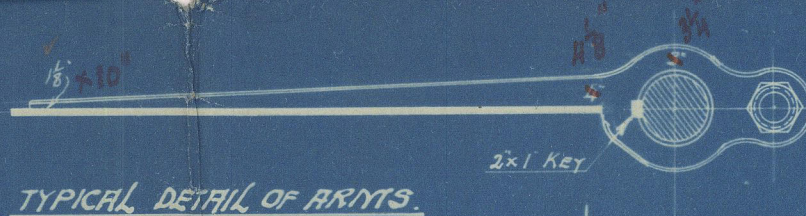


DETAIL OF PINTLES 1 & 5

SCALE: $\frac{3}{4}$ " = 1 FOOT.

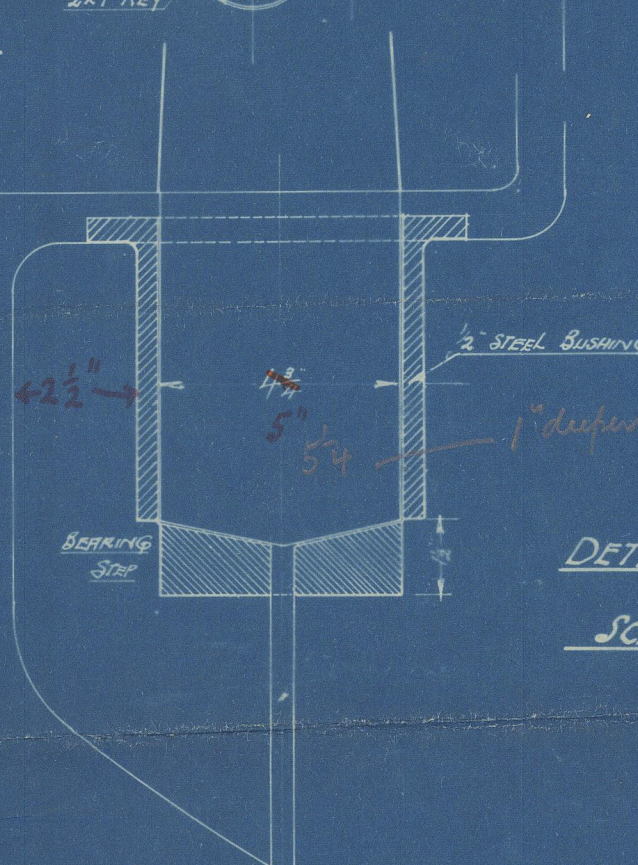


TYPICAL DETAIL OF RIVETS.



DETAIL OF N^o 6 PINTLE

SCALE: $\frac{3}{4}$ " = 1 FOOT.



© 2020 Lloyd's Register

Workman Clark & Co

N^o 469 470 476

Rudder Plan. ELECTRIC

469 1/5 Arlington Court

Bel 9109

470 3/8 Barrington Court

Bel. 9190

NW 'Electric'

476 Livingston Court

Bel.



© 2020

Lloyd's Register
Foundation

002543-002549-0130