

29 JUN 1946

Lloyd's Register of Shipping.

SURVEYS FOR FREEBOARD.

(CONDITIONS OF ASSIGNMENT.)

Index No. 38616.
(For London Office only).N^o 34491Ship's Name *M.V. "BRITISH PRINCESS"*Port of Survey *Sunderland*

Official Number

180928

Surveyor's Signature

D.S. Forsyth

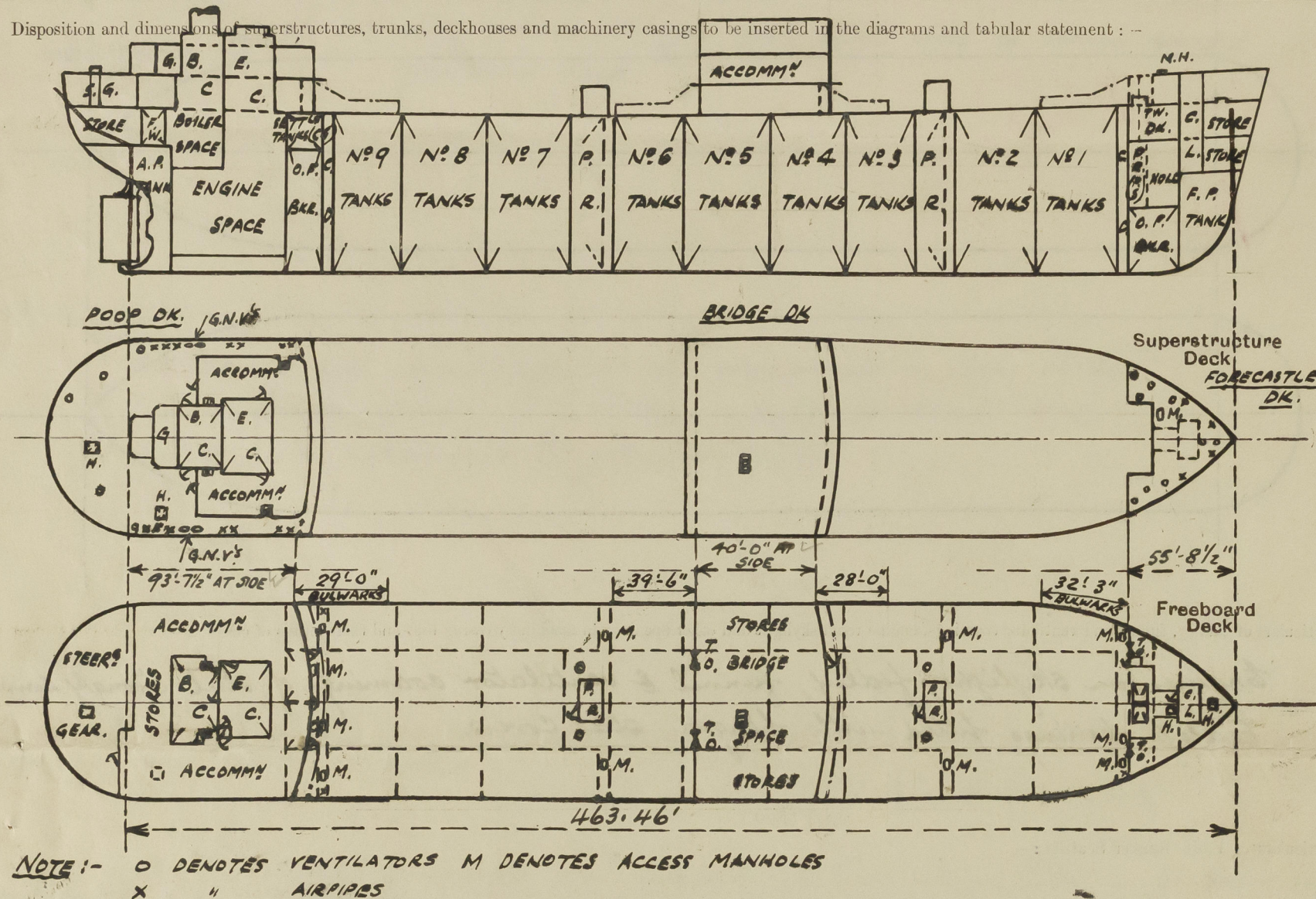
Nationality and Port of Registry

British, London.

Date of Survey

During Construction

Disposition and dimensions of superstructures, trunks, deckhouses and machinery casings to be inserted in the diagrams and tabular statement:—



Particulars of Superstructures, Trunks, Casings, Deckhouses.

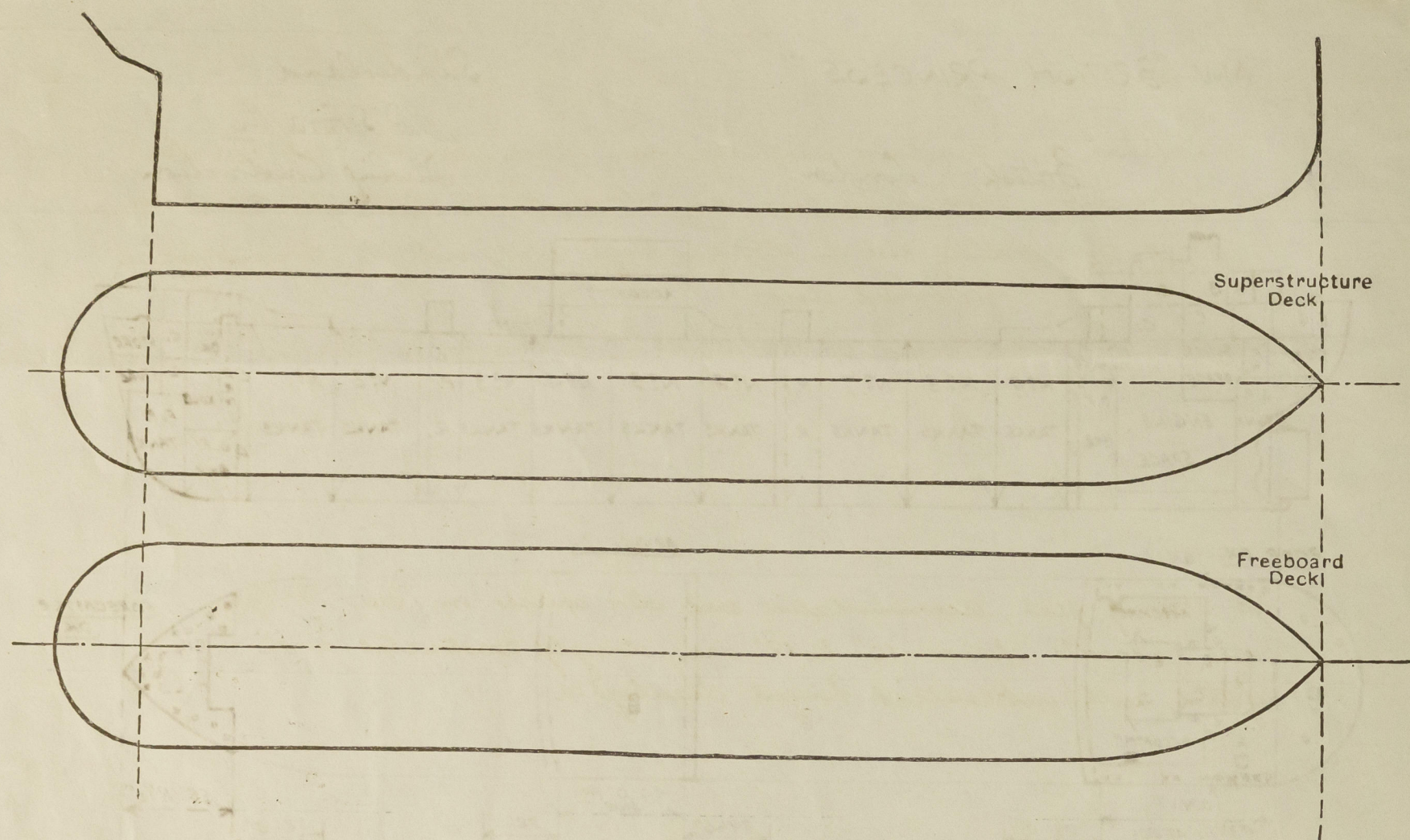
	Coaming	Plating	Stiffeners	Spacing	End Attachments of Stiffeners	Size of Openings	Height of Sills	Height of Casings
Poop Bulkhead44"	.44"	10"x3 1/2"x40" L	30"	Lugged at top Welded at bottom	2 @ 5'-0"x3'-0"	18"	8'-0"
Raised Quarter Deck Bulkhead ...	✓							
Bridge, After Bulkhead30"	.30"	4"x3"x32" L	30"	Riveted to boundary angle	2 @ 4'-1"x3'-1" 1 @ 4'-3"x2'-3"	19" 18" (W.T.D.)	8'-0"
Bridge, Forward Bulkhead44"	.44"	10"x3 1/2"x40" L	30"-33"	Lugged at top Welded at bottom	1 @ 5'-0"x3'-0"	18"	8'-0"
Fore-castle Bulkhead31"	.31"	4"x3 1/2"x32" L 3 1/2"x3 1/2"x32"	24" & 27"	Riveted to boundary angle	2 @ 4'-1"x3'-1" 1 @ 4'-3"x2'-3" 1 @ 4'-3"x2'-0"	19" 18" (W.T.D.) 19" (W.T.D.)	8'-0"
Trunk, Aft ...	✓							
Trunk, Forward ...	✓							
Exposed Machinery Casings on Free-board or Raised Quarter Decks ...	✓							
Exposed Machinery Casings on Super-structure Decks30"	.26"	3 1/2"x3"x32"	30"	Bracklitted at top. None at bottom.	2 @ 4'-3"x2'-3"	18"	12'-6"
Machinery Casings within Superstructures not fitted with Class I Closing Appliances ...	✓							
Deckhouses on Flush Deck Ships ...	✓							

Particulars of Closing Appliances (state if capable of being manipulated from both sides).

Poop Bulkhead ...	<i>Hinged Steel W.T. doors, manipulated from both sides.</i>
Raised Quarter Deck Bulkhead ...	
Bridge, After Bulkhead ...	<i>Shifting boards in full height channels & Hinged Steel W.T. door, operated both sides.</i>
Bridge, Forward Bulkhead ...	<i>Hinged Steel W.T. door, manipulated from both sides.</i>
Fore-castle Bulkhead ...	<i>Shifting boards in full height channels & Hinged Steel W.T. door, operated both sides.</i>
Exposed Machinery Casings on Free-board or Raised Quarter Decks ...	✓
Exposed Machinery Casings on Super-structure Decks ...	<i>Hinged steel W.T. doors, manipulated from both sides.</i>
Machinery Casings within Superstructures not fitted with Class I Closing Appliances ...	✓
Deckhouses on Flush Deck Ships ...	✓

PARTICULARS OF PROTECTION TO OPENINGS, ETC.

The following diagrams should be used to indicate the positions of cargo and coaling hatchways, gangway, cargo and coaling ports, ventilators, companionways, etc., which would affect the seaworthiness of the ship:—



Particulars of fidley, funnel and ventilator coamings, engine room skylight and other openings in machinery casing tops and their means of closing:—

Engine room skylight, fidley, funnel & ventilator coamings of steel strongly constructed. Fidley openings fitted with hinged steel covers.

Particulars of Flush Bunker Scuttles:—

None

Particulars of Companionways:—

Midships & Forward Pump Room Entrances:— Plating 30" Stiffeners 4" x 3" x 30" but with 3" x 3" x 30" reverse bars fitted at forward bulkheads, spaced 36" apart & bracketed top & bottom. Deck openings 6'-0" x 5'-0", Steel skylights 6'-0" x 4'-6", W.T. door 4'-3" x 2'-3", Coaming 18" high.

Particulars of Ventilators in exposed positions on freeboard and superstructure decks:—

1 @ 8" dia. Coult Vent, Coaming 36" x 30" to Fore Peak Store.	} On Forecastle Deck.
3 @ 8" " " " " 36" x 30" to Forecastle Tween Dks.	
2 @ 12" " " " " 36" x 34" to Fore Tween Decks.	
1 @ 12" " " " " 36" x 34" to Fore Pump Room (P.S.)	
2 @ 12" " " " " 36" x 34" to Fore Hold.	} On Forecastle Deck.
2 @ 24" " " " " 13'-0" x 40" To Fore Pump Room (efficiently stayed)	
2 @ 24" " " " " 13'-0" x 40" To Midship Pump Room	} On Poop Deck.
2 @ 6" " " " " 30" x 30" To Steering gear.	
2 @ 6" " " " " 30" x 30" To Store Rooms	
1 @ 9" " " " " 30" x 30" To Rigging, Machinery.	
4 @ 5" dia. gooseneck vents, 21" to opening. To Drydock rooms etc. aft.	

All ventilators fitted with wood plugs and canvas covers.

Particulars of Air Pipes in exposed positions on freeboard, raised quarter, or superstructure decks:—

Air pipes of a patent type and in accordance with approved plan of Automatic Vent pipes for oil fuel & water ballast tanks (date 3/1/46)

Particulars of Gangway Cargo and Coaling Ports:—

None

Particulars of Scuppers and Sanitary Discharge Pipes:—

Scuppers and Sanitary discharges from spaces above the freeboard deck fitted with brass automatic non-return storm valves at ship's sides. 7 off 5 1/2" x 2" slots cut in stringer angle each side to drain exposed freeboard deck

Particulars of Side Scuttles:—

To steering gear, accommodation and store spaces in Poop, Bridge, and Forecastle spaces 10" & 12" dia., strongly constructed and fitted with substantial hinged deadlights.

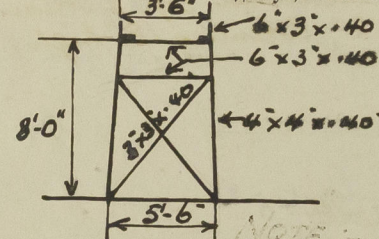
Vertical distance of Sill of lowest Side Scuttle above top of keel

39'-6" (No side scuttles fitted below freeboard deck)

Particulars of Guard Rails:—

Strongly constructed steel bulwarks, efficiently stayed, fitted on freeboard deck for about 32'-3" abaft Forecastle end, 28'-0" & 39'-6" at fore & after ends of Bridge respectively, and 29'-0" fore of Poop front; elsewhere on freeboard deck strong steel stanchions 4'-6" in height above deck, spaced about 4'-6" apart with 3 rails. At Bridge deck sides efficient steel bulwarks 3'-6" high, and elsewhere on Bridge, Poop & Forecastle decks, stanchions 3'-9" & 3'-6" in height above deck, spaced about 4'-6" apart with 3 rails.

Particulars of Gangways, Lifelines, etc.:—



Fore & Aft Gangway from Forecastle to Bridge and Bridge to Poop, 8'-0" in height, supports spaced approximately 7'-0" to 8'-0" apart, fore and aft bracing 4 off forward and 6 off aft. 25" Chequer plating, strong steel stanchions 3'-6" in height spaced about 5'-0" apart with 2 rails.

Particulars of Freeing Arrangements. (Clear of Open rails)

	Length of Bulwark	Height of Bulwark	Size of Freeing Ports	Number each side	Area each side	Rule area each side
ABAF Fore	32'-3"	4'-0"	12'-0" x 9"	1	9 sq ft	✓
FOR OF BRIDGE	28'-0"		12'-0" x 9"	1	9 sq ft	
ABAF BRIDGE	39'-6"		15'-0" x 9"	1	11.25 sq ft	✓
FOR OF POOP	29'-0"		15'-0" x 9"	1	11.25 sq ft	

State position of each freeing port ...

(F. and A. position and height above deck edge)

State whether the freeing ports are fitted with shutters, bars, or rails, and give particulars of such:— None

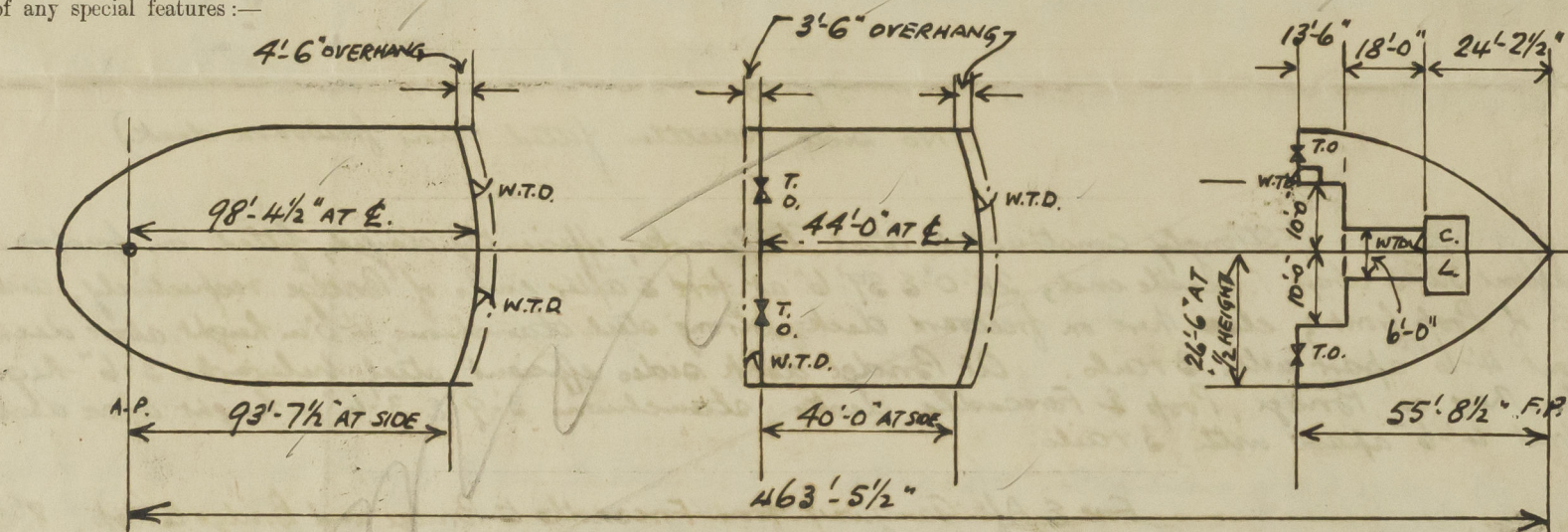
Additional area where sheer is less than standard.

British Princess

PARTICULARS OF PROTECTION TO OPENINGS, ETC.

		HATCHWAYS ON FREEBOARD AND SUPERSTRUCTURE DECKS.									
		FREEBOARD DECK					POOP DECK		FO'CLE DECK		
Description of Hatchway		O.T. HATCHES TO CARGO TANKS	CARGO HATCH TO F.O. HOLD	ACCESS TO F.O. STORE IN F.O. LE TW.	ACCESS TO F.O. HOLD	O.T. HATCHES TO D.F. BUNKERS	ACCESS TO COFFERDAMS	ACCESS TO JETTIL TANKS	TO AFTER STORE	TO COLD STORES	TO F.O. LE TW.
Dimensions of Hatchway		27' OFF 6'-0" x 4'-0"	6'-9" x 10'-0"	3'-0" x 3'-0"	2'-6" x 2'-0"	3'-0" x 3'-0"	1'-7" x 2'-0"	1'-7" x 2'-0"	2'-6" x 2'-6"	2'-9" x 2'-9"	1'-6" x 2'-0"
COAMINGS	Height above Deck	12"	30"	9"	9"	30"	12' x 3 1/2' x 40"	12' x 3 1/2' x 40"	30"	30"	12"
	Thickness	.50"	.44"	.40"	.40"	.40"	.40"	.40"	.30"	.40"	.38"
	Stiffeners	✓	✓	✓	✓	✓	✓	✓	✓	✓	✓
	Brackets, Stays	✓	✓	✓	✓	✓	✓	✓	✓	✓	✓
HATCH BEAMS	Number										
	Spacing										
FORE AND AFTERS	Number										
	Spacing										
HATCH COVERS	Material	Steel	Steel	Steel	Steel	Steel	Steel	Steel	Steel	Pin	Steel
	Thickness	.64"	.50"	.50"	.50"	.50"	.50"	.50"	.40"	2 1/2"	.50"
HATCH COVERS	How fitted	Hinging	Hinging	Hinging	Hinging	Hinging	Portable	Portable	Hinging	F. & A.	Hinging
	Bearing Surface		(2" Section)							3"	
Spacing of Cleats		16 Toggles	24 Toggles	6 Toggles	6 Toggles	7 Toggles	3/4" Bolts spaced 4" apart	3/4" Bolts spaced 4" apart	7 Toggles	2 Cleats per side	5 Toggles
Number of Tarpaulins		✓	85 Bridges Toggles	✓	✓	✓	✓	✓	✓	2	✓
*Are wood fore and afters steel shod at all bearing surfaces?		✓	✓	✓	✓	✓	✓	✓	✓	✓	✓
Are battens and wedges efficient and in good condition?		✓	✓	✓	✓	✓	✓	✓	✓	✓	✓
Are tarpaulins in good condition and in accordance with rule requirements?		✓	✓	✓	✓	✓	✓	✓	✓	✓	✓
Are lashings provided in accordance with rule requirements?		✓	✓	✓	✓	✓	✓	✓	✓	✓	✓

Particulars of any special features:—



Endorsement at first survey and at surveys for renewal of Certificate:—

The fittings and appliances are in accordance with the particulars shown on this form (or as now modified) and are in good condition.

NOTE:- Sheer height at A.P. if the Sheer curve were continued 4'-8"
 Height of Poop deck at side above the projected sheer curve
 at the A.P. = 7'-10 7/8"



© 2020

Lloyd's Register
Foundation